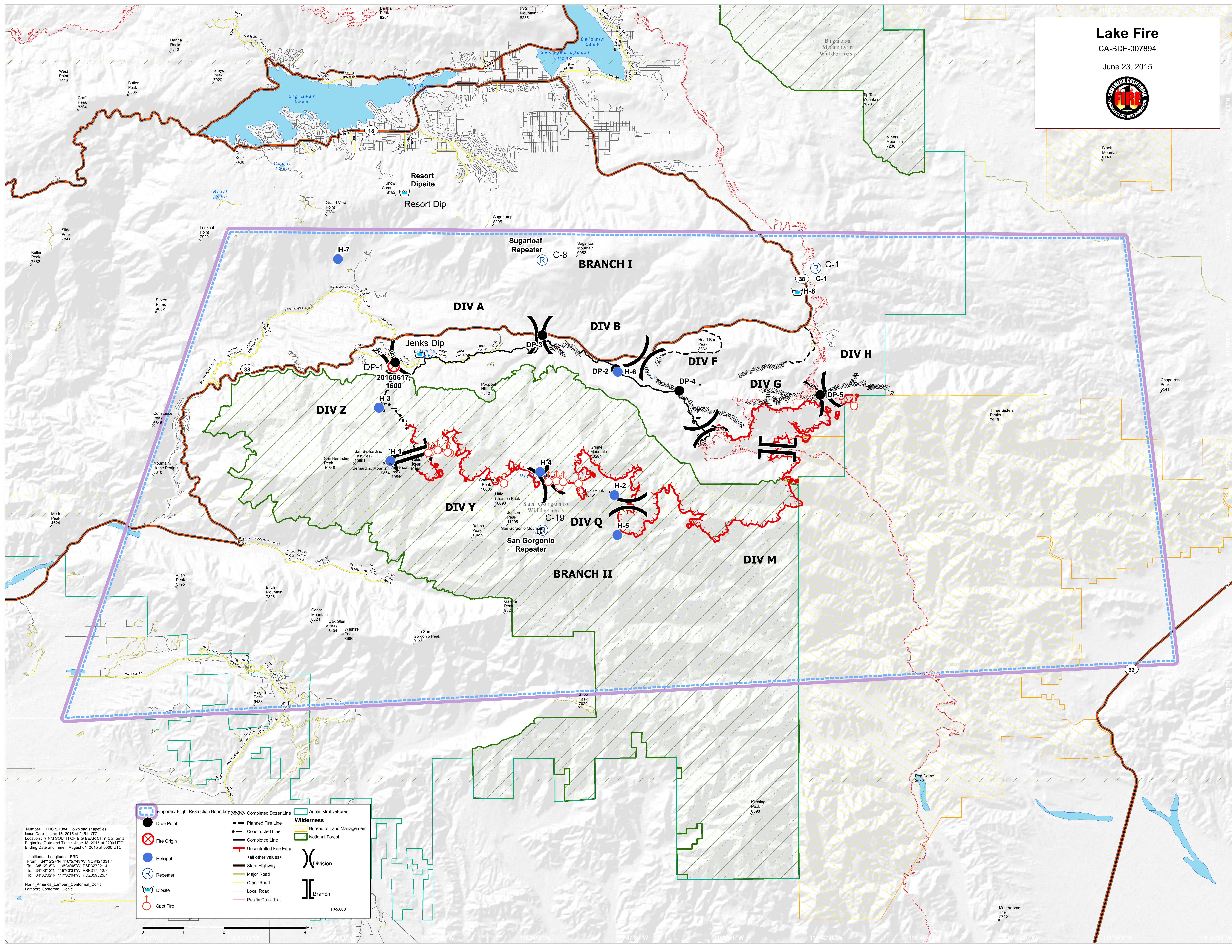


# Lake Fire

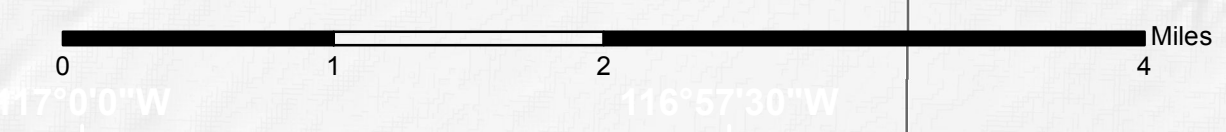
CA-BDF-007894

June 23, 2015



Number : FDC 51084 Download shapefiles  
Issue Date : June 18, 2015 at 2151 UTC  
Location : 7 NM SOUTH OF BIG BEAR CITY, California  
Beginning Date and Time : June 18, 2015 at 2200 UTC  
Ending Date and Time : August 01, 2015 at 0000 UTC  
Latitude : Longitude : FRD:  
From : 34°12'27"N 116°57'49"W VCV124031.4  
To : 34°12'16"N 116°54'49"W PSP327021.4  
To : 34°02'13"N 116°53'31"W PSP317012.7  
To : 34°02'02"N 117°02'04"W PDZ059025.7  
North\_America\_Lambert\_Conformal\_Conic  
Lambert\_Conformal\_Conic

	Temporary Flight Restriction Boundary		Completed Dozer Line		Administrative Forest
	Drop Point		Planned Fire Line		Wilderness
	Fire Origin		Constructed Line		Bureau of Land Management
	Helispot		Completed Line		National Forest
	Repeater		Uncontrolled Fire Edge		Division
	Dipsite		State Highway		Branch
	Spot Fire		Major Road		
			Other Road		
			Local Road		
			Pacific Crest Trail		



0 1 2 4 Miles  
116°53'00"W 116°52'00"W 116°51'00"W 116°50'00"W 116°49'00"W 116°48'00"W 116°47'00"W 116°46'00"W 116°45'00"W 116°44'00"W 116°43'00"W 116°42'00"W 116°41'00"W 116°40'00"W 116°39'00"W 116°38'00"W 116°37'00"W 116°36'00"W 116°35'00"W 116°34'00"W 116°33'00"W 116°32'00"W 116°31'00"W 116°30'00"W 116°29'00"W 116°28'00"W 116°27'00"W 116°26'00"W 116°25'00"W 116°24'00"W 116°23'00"W 116°22'00"W 116°21'00"W 116°20'00"W 116°19'00"W 116°18'00"W 116°17'00"W 116°16'00"W 116°15'00"W 116°14'00"W 116°13'00"W 116°12'00"W 116°11'00"W 116°10'00"W 116°09'00"W 116°08'00"W 116°07'00"W 116°06'00"W 116°05'00"W 116°04'00"W 116°03'00"W 116°02'00"W 116°01'00"W 116°00'00"W