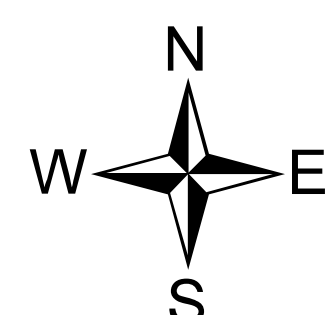
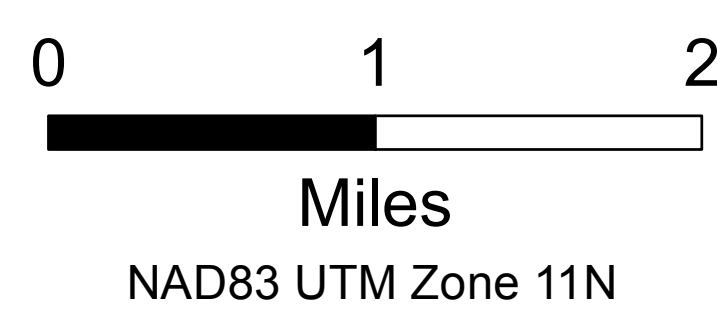
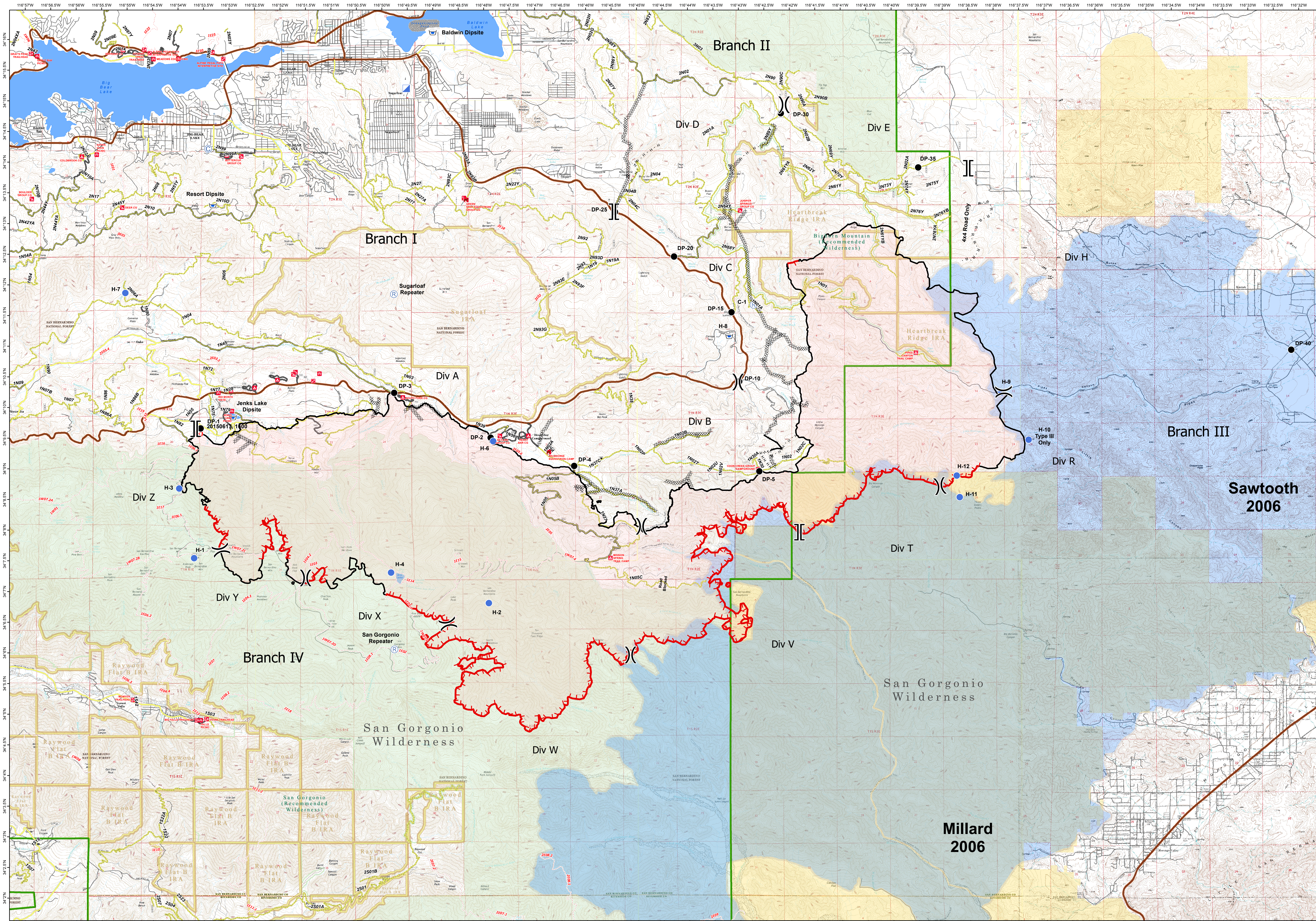


# OPERATIONS

June 30 2015; 31,359 Acres

# LAKE FIRE CA-BDF-7894



[[ Branch	Uncontrolled Fire Edge	● Drop Point	⊙ Camp	Administrative Forest	Bureau of Land Management	— Paved Road	⋯ Forest Trail
)) Division	Completed Dozer Line	⊙ Fire Origin	⊙ Incident Command Post	Inventoried Roadless Area	National Forest	--- Gravel Road	— State Highway
	Completed Line	● Helispot	⊙ Repeater	Recommended Wilderness	Fire History	— Dirt Road	— Major Road
	H · · · H Hand Line	⊙ Dip Site				— 4wd Road	
	R · · · R 4x4 Road						