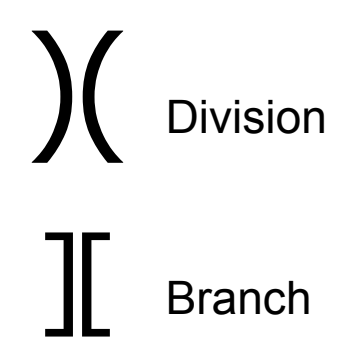
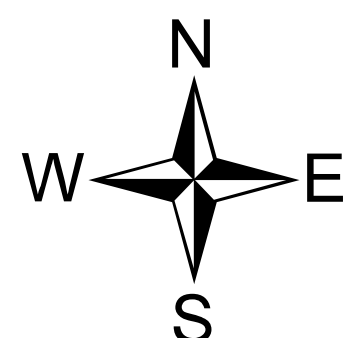
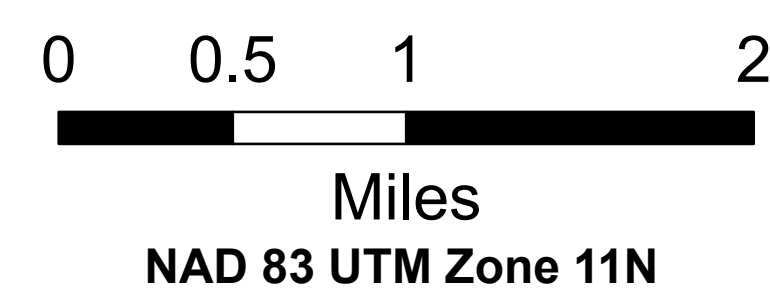
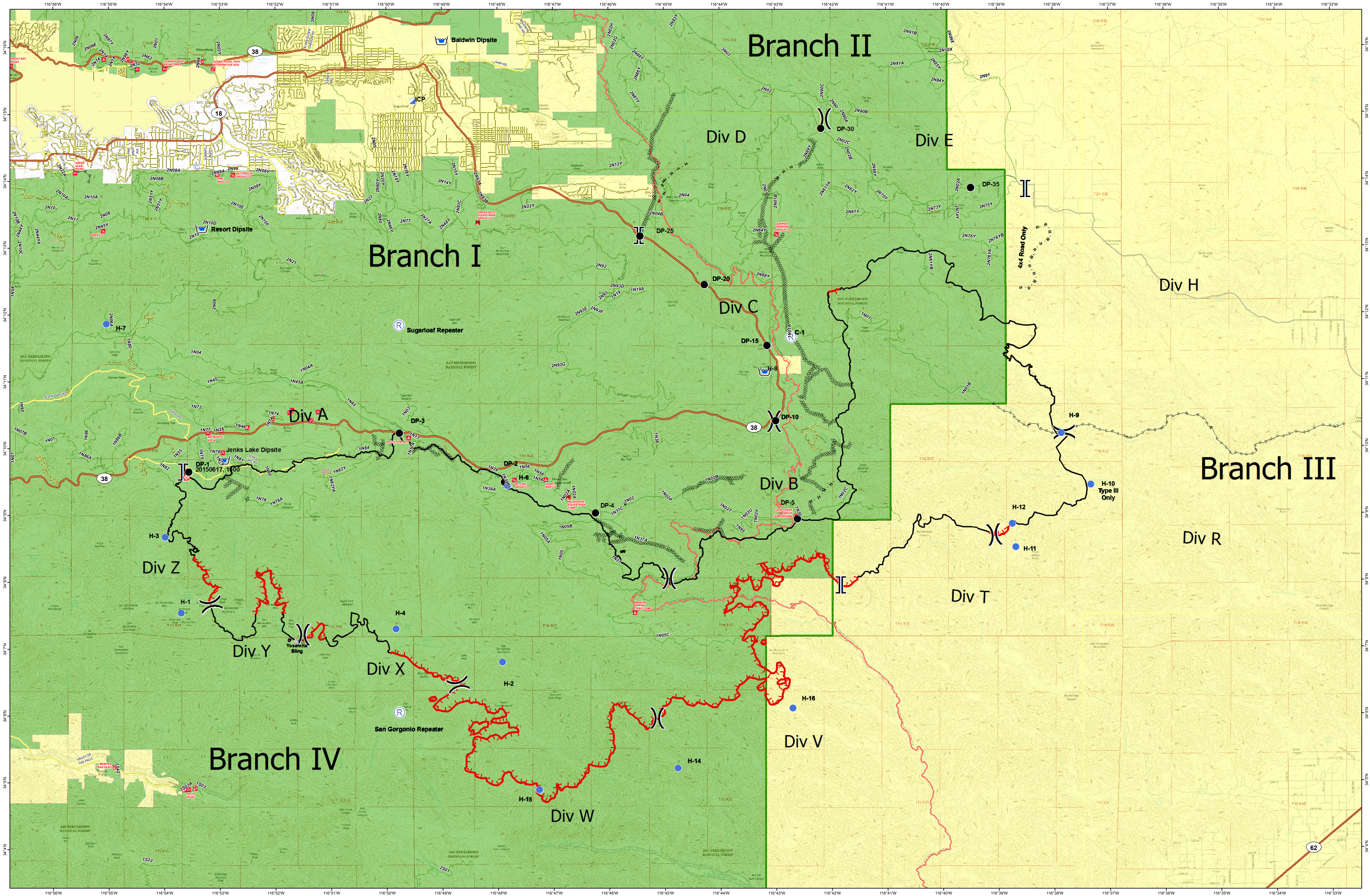


# DIRECT PROTECTION AREA

July 1 2015; 31,359 Acres

# LAKE FIRE CA-BDF-7894



- Camp
- Drop Point
- Fire Origin
- Helispot
- Ⓜ Incident Command Post
- Ⓜ Repeater
- Ⓜ Sling Site
- Ⓜ Dip Site
- Uncontrolled Fire Edge
- - - Completed Dozer Line
- Completed Line
- - - Hand Line

- Road as Completed Line
- RoadsATM
- State Highway
- Major Road
- Local Road
- Other Road
- Access Road; SUP

- Pacific Crest Trail
- Special Use Road
- Closed Route

- Administrative Forest
- Federal
- Local
- State

Acres per DPA Agency	
Federal	26,135 ac
State	5,224 ac
Local	0 ac
<b>Total</b>	<b>31,359 ac</b>