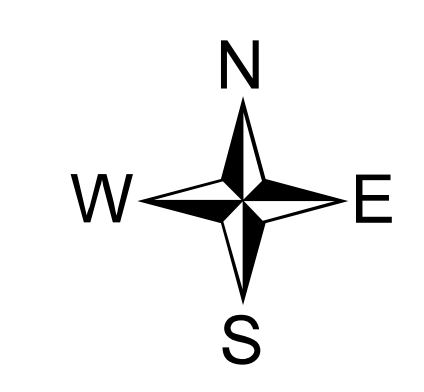
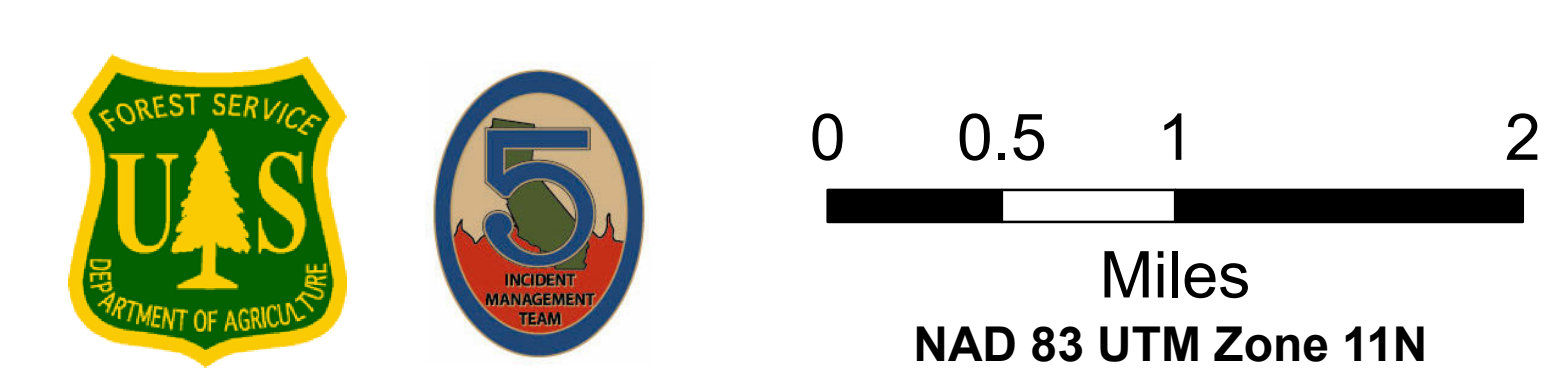
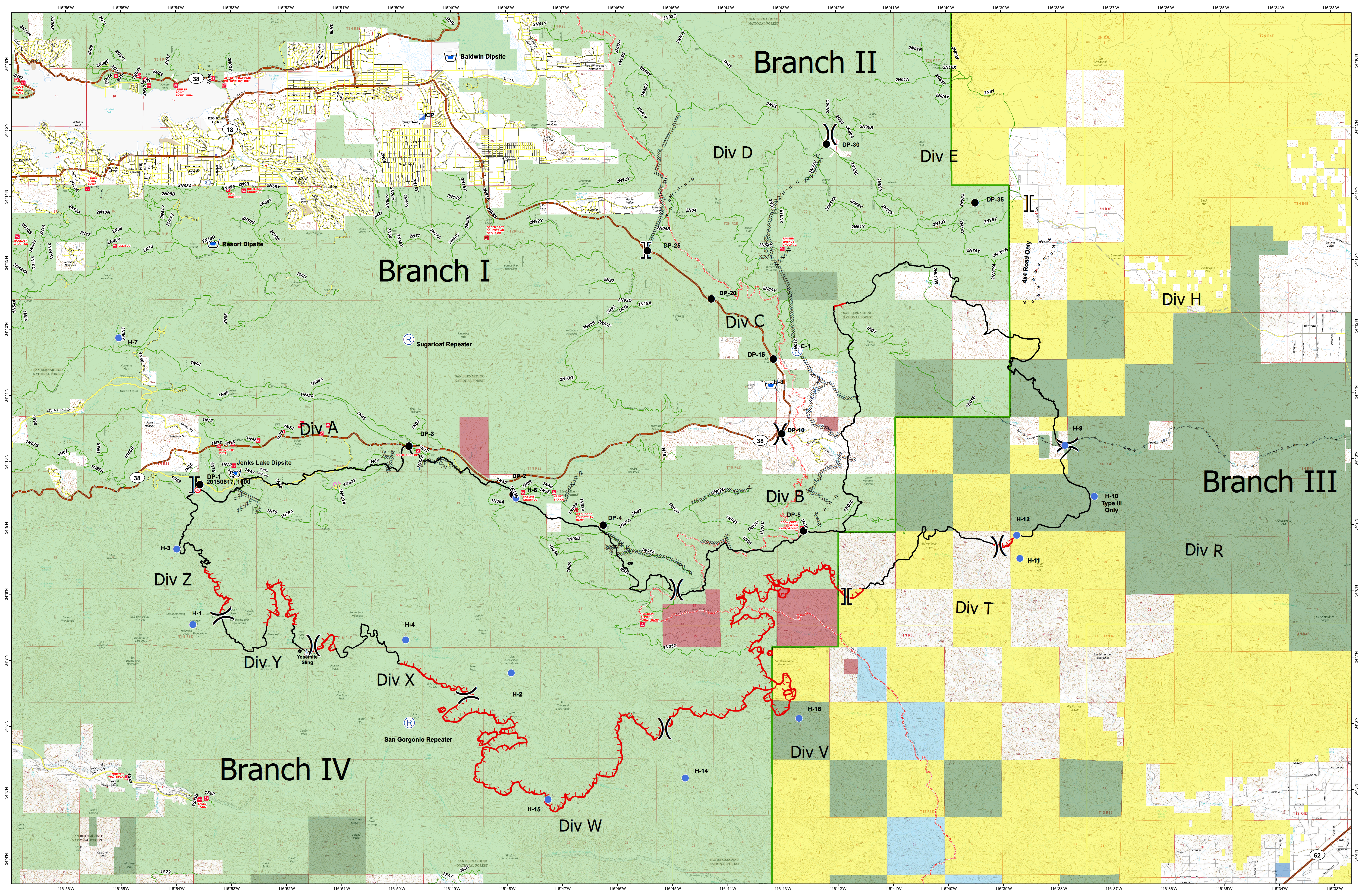


OWNERSHIP

July 1 2015; 31,359 Acres

LAKE FIRE CA-BDF-7894



- | | | | | | | | | | | | | | | |
|--|----------|--|-------------|--|-----------------------|--|------------------------|--|---------------|------------------------|------------------|------------|------------------|---------------------|
| | Division | | Camp | | Incident Command Post | | Uncontrolled Fire Edge | | R - R - R | Road as Completed Line | | Local Road | | Pacific Crest Trail |
| | Branch | | Drop Point | | Repeater | | Completed Dozer Line | | Roads ATM | | Other Road | | Special Use Road | |
| | | | Fire Origin | | Retardant/Mud Pit | | Completed Line | | State Highway | | Access Road; SUP | | Closed Route | |
| | | | Helispot | | | | Hand Line | | Major Road | | | | | |

- Ownership**
- Local Government
 - Non-Profit Conservancies and Trusts
 - CA Dept. of Fish and Wildlife
 - Other State Lands
 - USDA Forest Service
 - Bureau of Land Management
 - Other Federal Lands