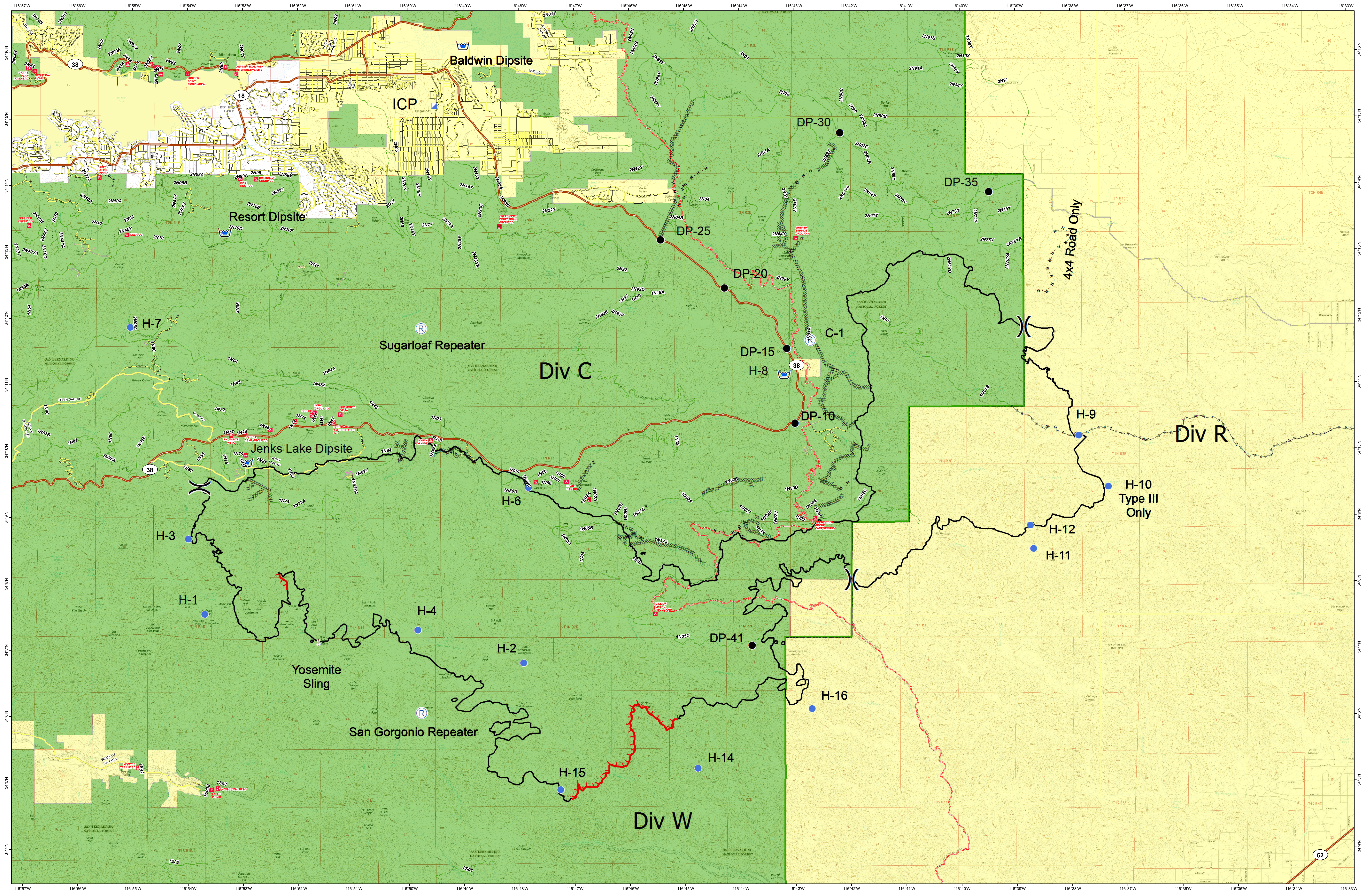


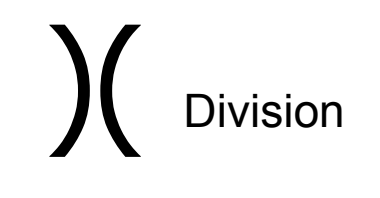
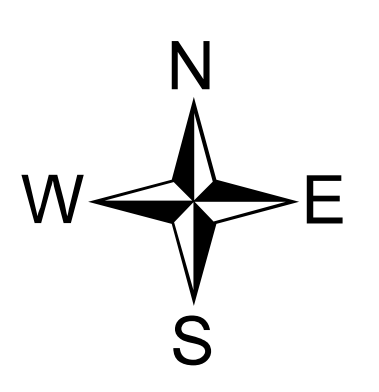
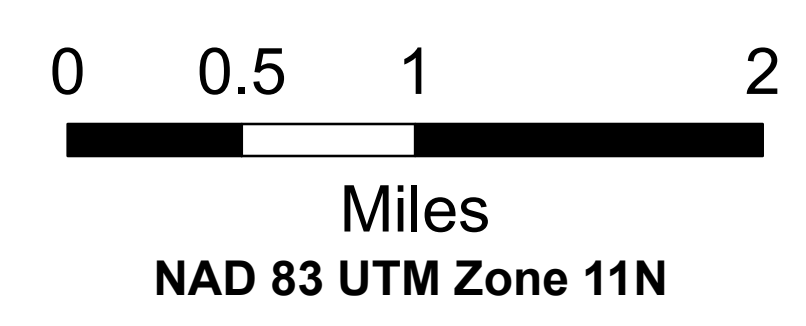
DIRECT PROTECTION AREA

July 4 2015; 31,359 Acres

LAKE FIRE CA-BDF-7894



| Acres per DPA Agency | |
|----------------------|------------------|
| Federal | 26,135 ac |
| State | 5,224 ac |
| Local | 0 ac |
| Total | 31,359 ac |



- Camp
- ⊙ Drop Point
- Fire Origin
- Helispot
- ⊠ Incident Command Post
- Ⓡ Repeater
- Ⓜ Retardant/Mud Pit
- Uncontrolled Fire Edge
- - - - Completed Dozer Line
- Completed Line
- - - - Hand Line
- - - - Road as Completed Line
- - - - RoadsATM
- State Highway
- Major Road
- Local Road
- Other Road
- - - - Access Road; SUP
- Pacific Crest Trail
- Special Use Road
- - - - Closed Route
- ▭ Administrative Forest
- ▭ Federal
- ▭ Local
- ▭ State