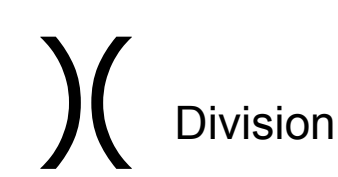
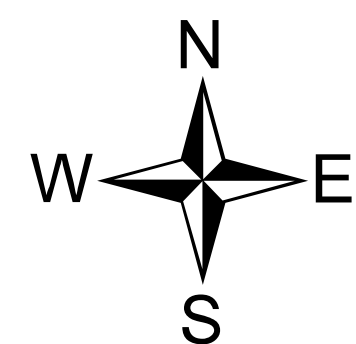
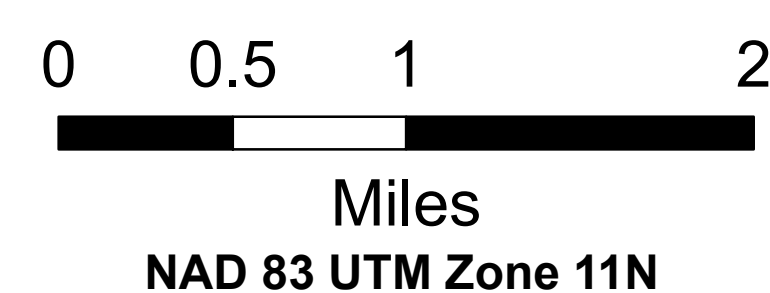
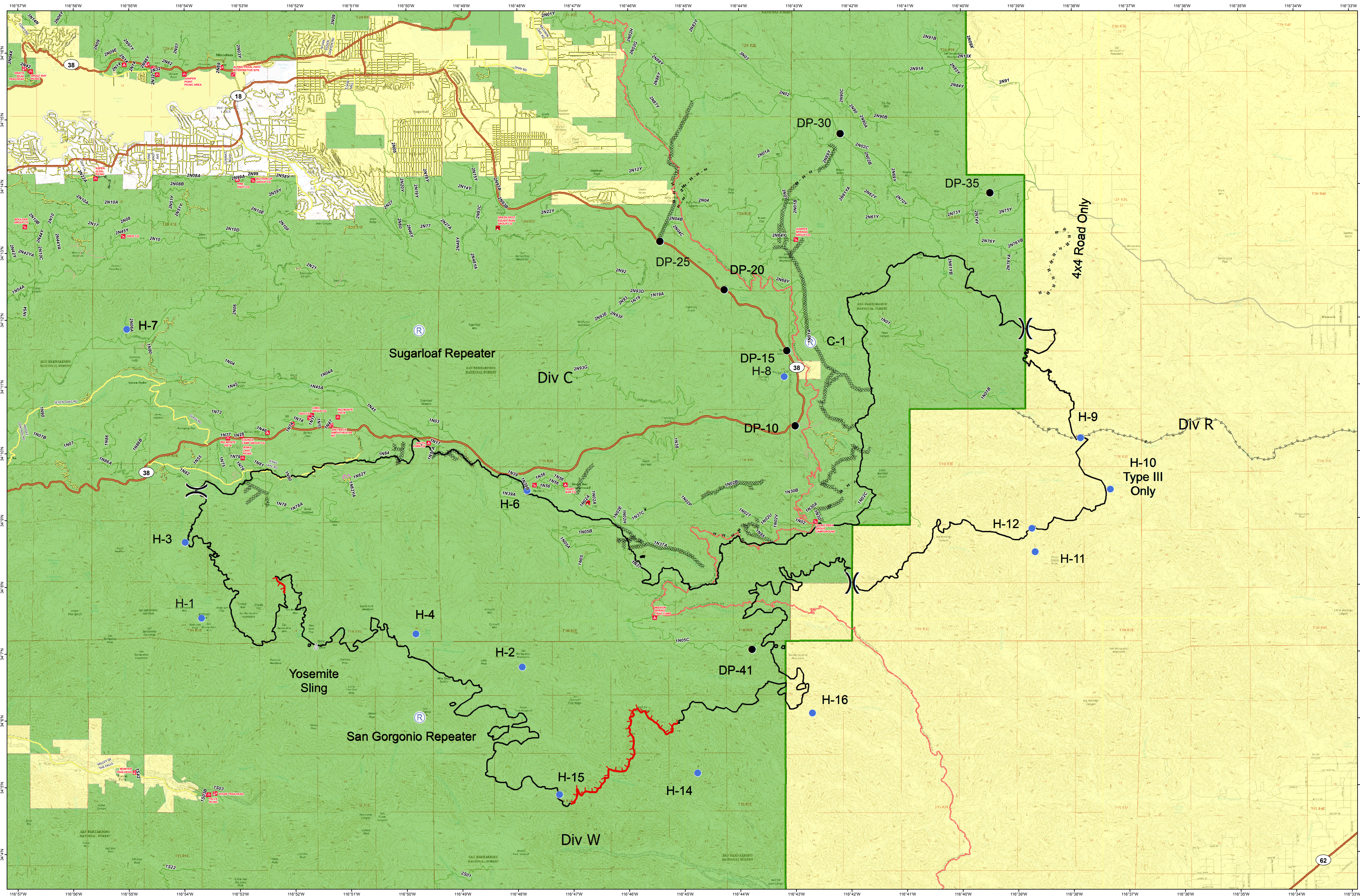


DIRECT PROTECTION AREA

July 5 2015; 31,359 Acres

LAKE FIRE CA-BDF-7894



- Camp
- Drop Point
- Fire Origin
- Helispot
- Incident Command Post
- Repeater
- Retardant/Mud Pit
- Uncontrolled Fire Edge
- Completed Dozer Line
- Completed Line
- Hand Line
- Road as Completed Line
- RoadsATM
- State Highway
- Major Road
- Local Road
- Other Road
- Access Road; SUP
- Pacific Crest Trail
- Special Use Road
- Closed Route
- Administrative Forest
- Federal
- Local
- State

Acres per DPA Agency	
Federal	26,135 ac
State	5,224 ac
Local	0 ac
Total	31,359 ac