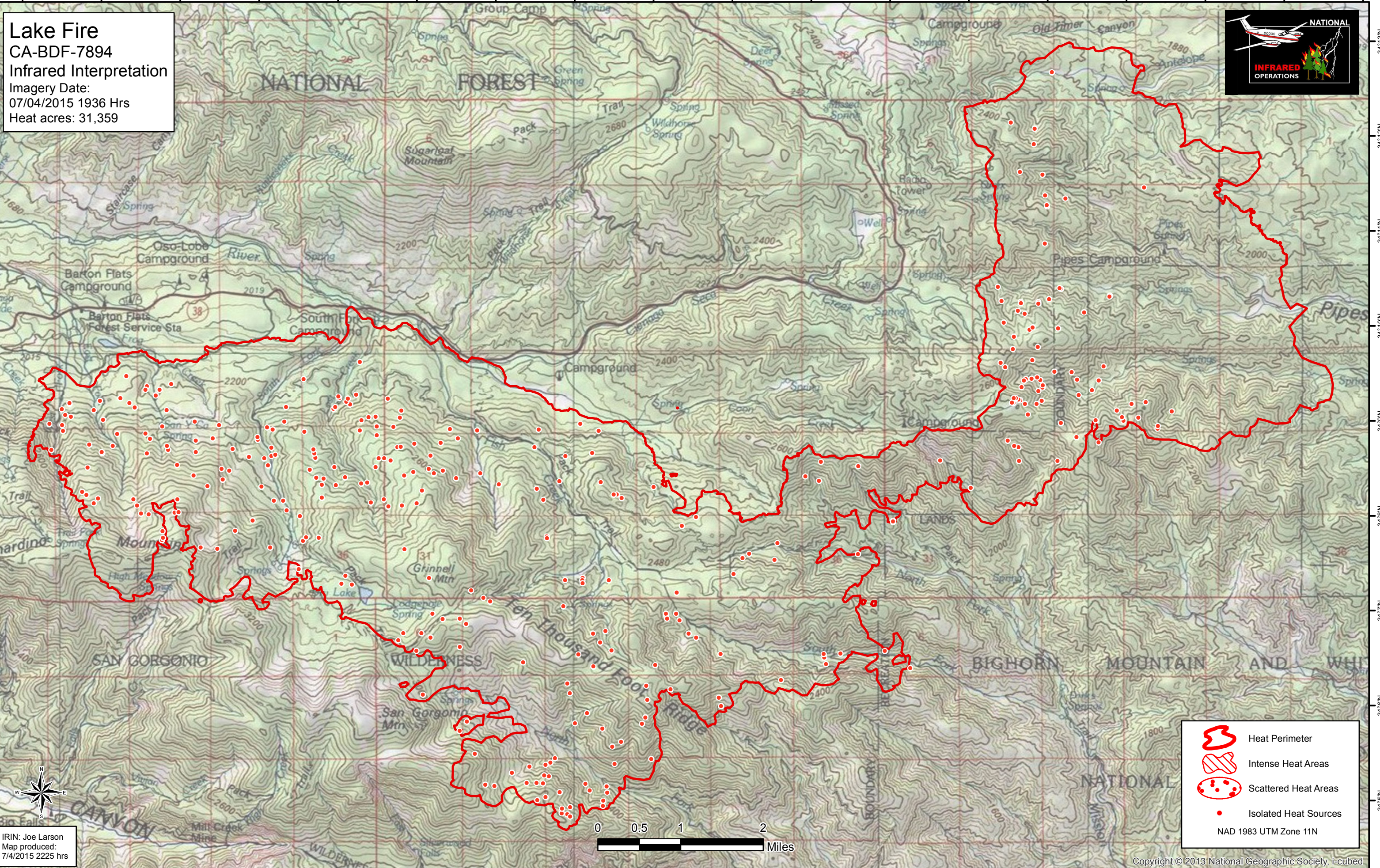






116°54'W 116°53'W 116°52'W 116°51'W 116°50'W 116°49'W 116°48'W 116°47'W 116°46'W 116°45'W 116°44'W 116°43'W 116°42'W 116°41'W 116°40'W 116°39'W 116°38'W 116°37'W

Lake Fire
CA-BDF-7894
Infrared Interpretation
Imagery Date:
07/04/2015 1936 Hrs
Heat acres: 31,359



-  Heat Perimeter
-  Intense Heat Areas
-  Scattered Heat Areas
-  Isolated Heat Sources

NAD 1983 UTM Zone 11N



IRIN: Joe Larson
Map produced:
7/4/2015 2225 hrs

116°54'W 116°53'W 116°52'W 116°51'W 116°50'W 116°49'W 116°48'W 116°47'W 116°46'W 116°45'W 116°44'W 116°43'W 116°42'W 116°41'W 116°40'W 116°39'W 116°38'W 116°37'W