

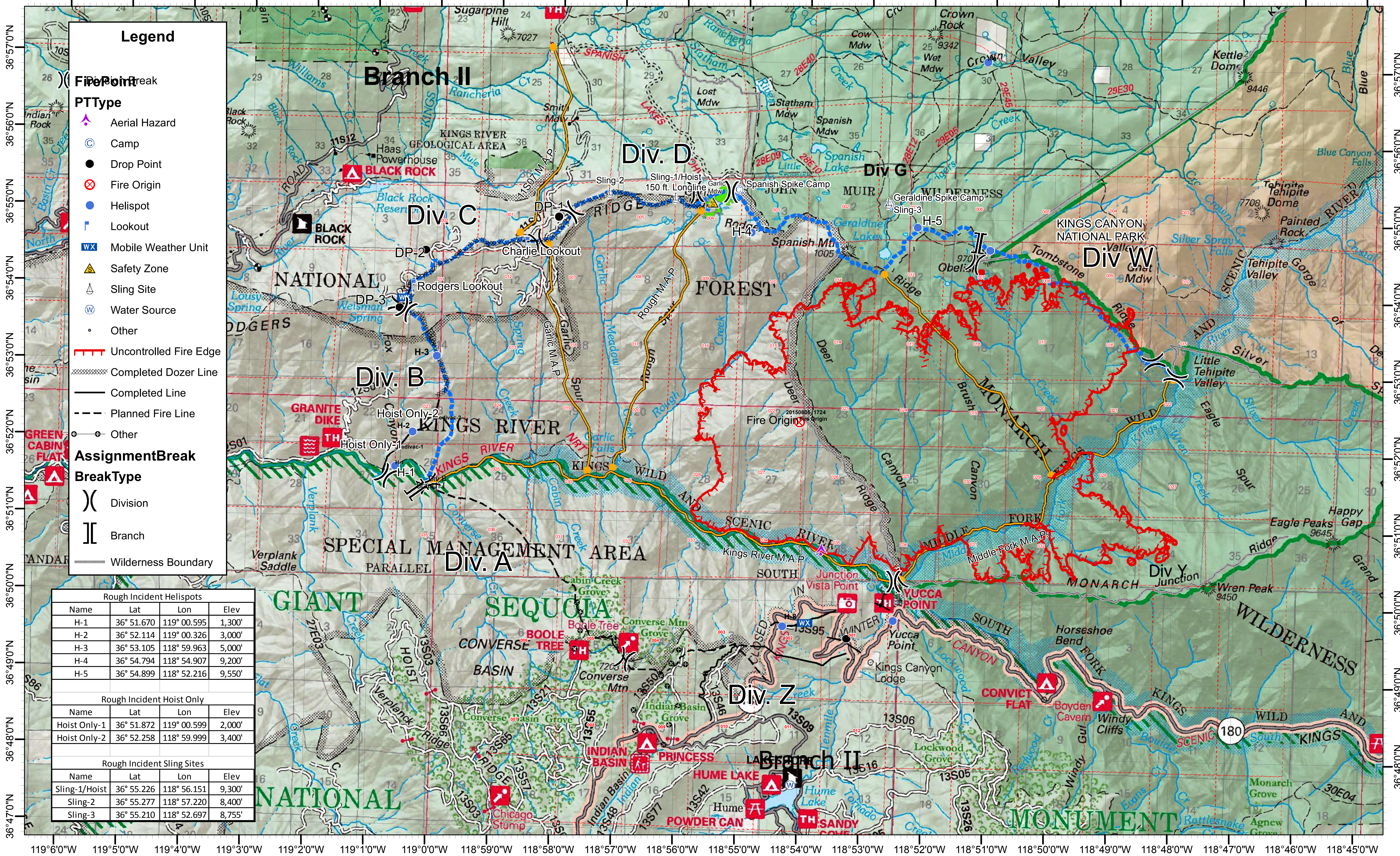


Aviation Map

Rough Incident CA-SNF-001746

13,345 Acres
@ 2105 08142015
NAD83 UTM 11

119°6'0"W 119°5'0"W 119°4'0"W 119°3'0"W 119°2'0"W 119°1'0"W 119°0'0"W 118°59'0"W 118°58'0"W 118°57'0"W 118°56'0"W 118°55'0"W 118°54'0"W 118°53'0"W 118°52'0"W 118°51'0"W 118°50'0"W 118°49'0"W 118°48'0"W 118°47'0"W 118°46'0"W 118°45'0"W



Legend

FirePoint

PTType

- Aerial Hazard
- Camp
- Drop Point
- Fire Origin
- Helispot
- Lookout
- Mobile Weather Unit
- Safety Zone
- Sling Site
- Water Source
- Other

AssignmentBreak

BreakType

- Division
- Branch
- Wilderness Boundary

Line Types:

- Uncontrolled Fire Edge
- Completed Dozer Line
- Completed Line
- Planned Fire Line
- Other

Rough Incident Helispots			
Name	Lat	Lon	Elev
H-1	36° 51.670	119° 00.595	1,300'
H-2	36° 52.114	119° 00.326	3,000'
H-3	36° 53.105	118° 59.963	5,000'
H-4	36° 54.794	118° 54.907	9,200'
H-5	36° 54.899	118° 52.216	9,550'

Rough Incident Hoist Only			
Name	Lat	Lon	Elev
Hoist Only-1	36° 51.872	119° 00.599	2,000'
Hoist Only-2	36° 52.258	118° 59.999	3,400'

Rough Incident Sling Sites			
Name	Lat	Lon	Elev
Sling-1/Hoist	36° 55.226	118° 56.151	9,300'
Sling-2	36° 55.277	118° 57.220	8,400'
Sling-3	36° 55.210	118° 52.697	8,755'

119°6'0"W 119°5'0"W 119°4'0"W 119°3'0"W 119°2'0"W 119°1'0"W 119°0'0"W 118°59'0"W 118°58'0"W 118°57'0"W 118°56'0"W 118°55'0"W 118°54'0"W 118°53'0"W 118°52'0"W 118°51'0"W 118°50'0"W 118°49'0"W 118°48'0"W 118°47'0"W 118°46'0"W 118°45'0"W