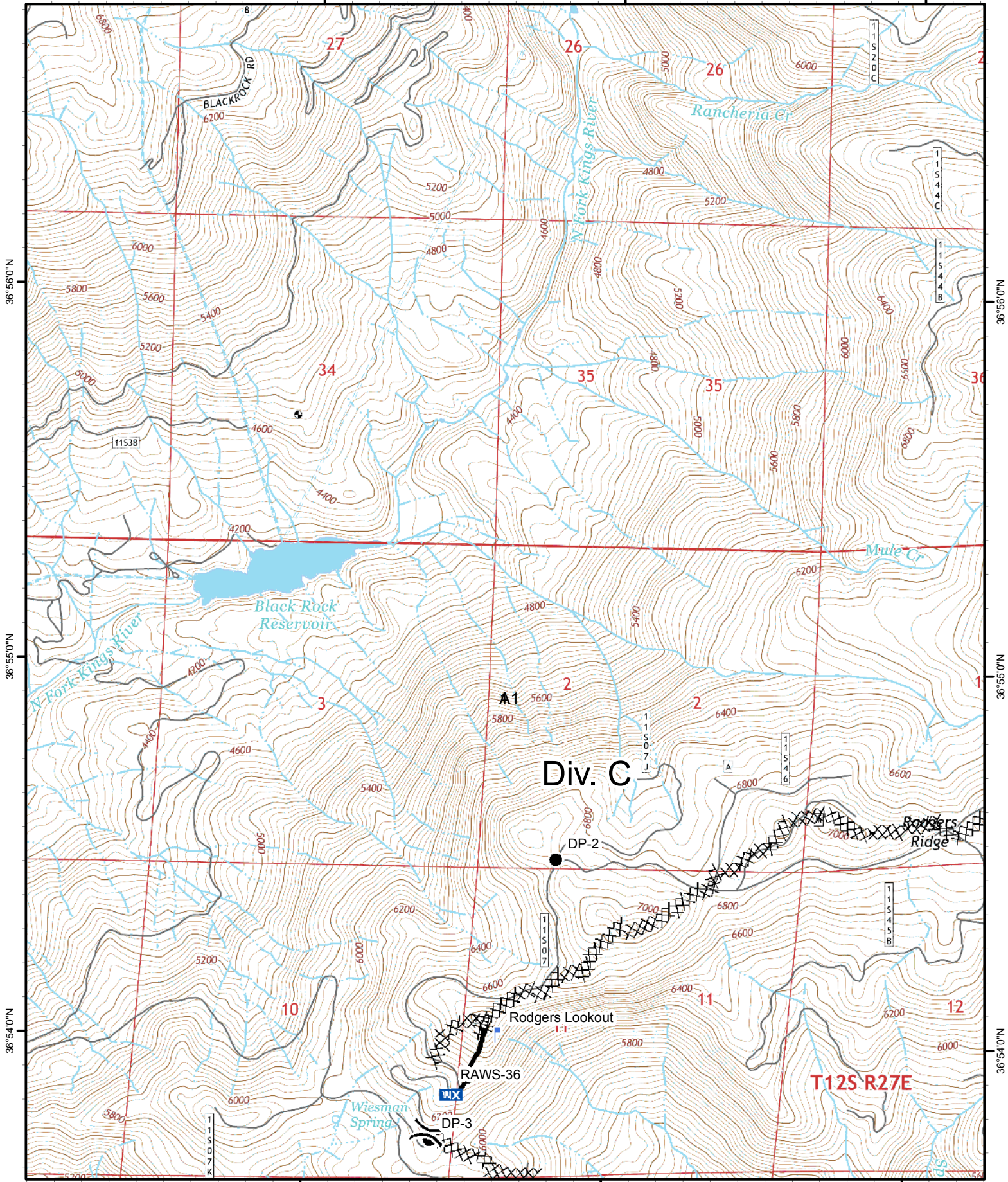


119°10'W

119°00'W

118°59'W

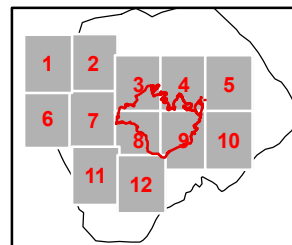


Rough Incident
IAP Map
CA-SNF-001746
NAD83 Datum
August 16, 2015
Day Shift
14,000 Acres
8-15-2015 2230

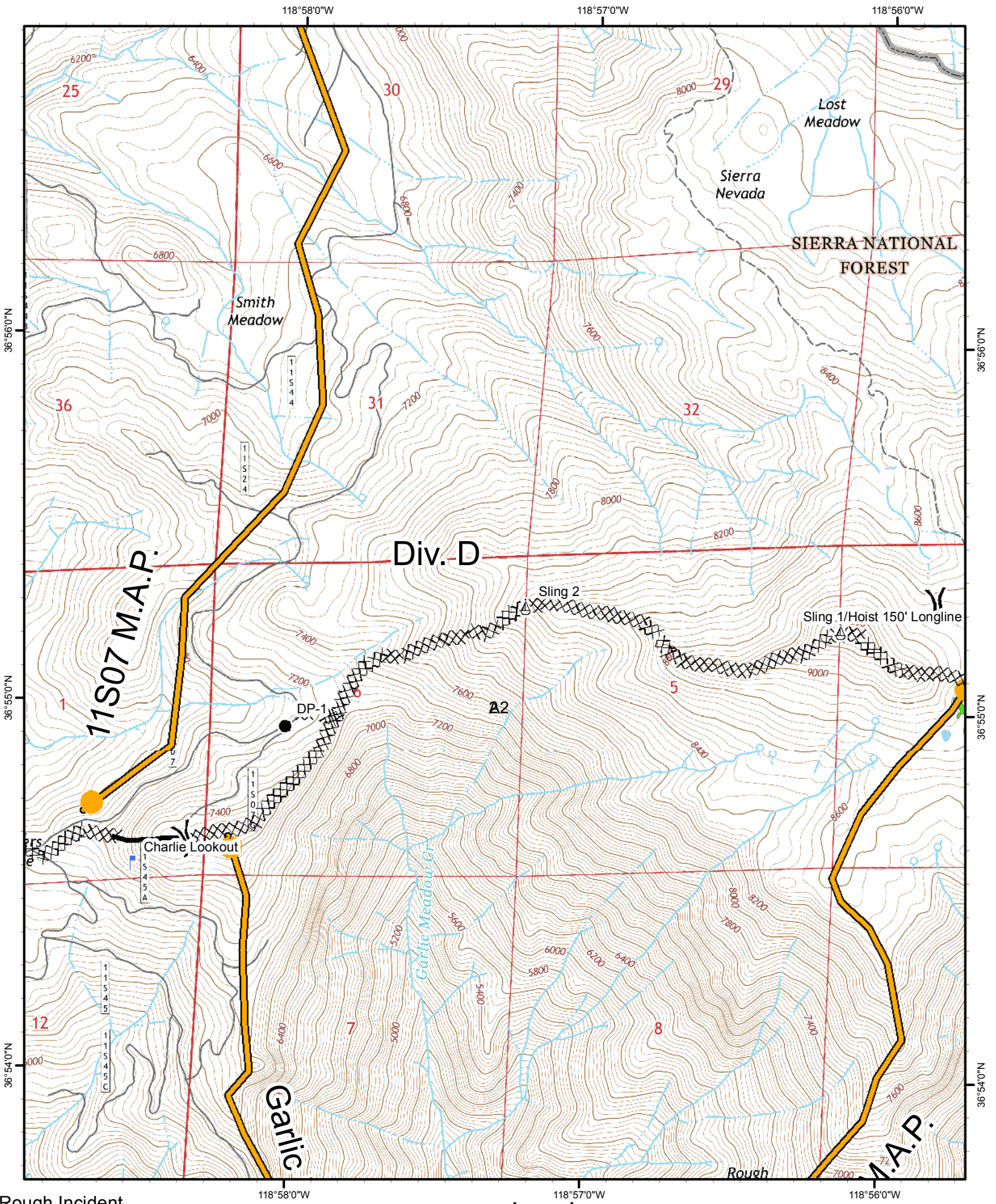


Legend

- Division
- Mobile Weather Unit
- Completed Line
- Sling Site
- Repeater
- Wilderness Boundary
- Aerial Hazard
- Safety Zone
- Drop Point
- Helispot
- Lookout
- Camp
- Fire Origin
- Completed Dozer Line



Location Map

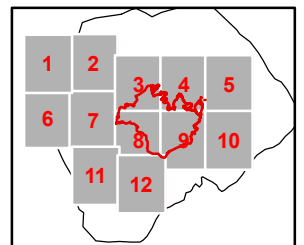
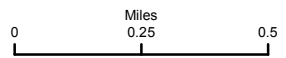


Rough Incident
IAP Map
CA-SNF-001746
NAD83 Datum
August 16, 2015
Day Shift
14,000 Acres
8-15-2015 2230



Legend

- () Division
- WIX Mobile Weather Unit
- Completed Line
- ⚠ Aerial Hazard
- ⚓ Sling Site
- Wilderness Boundary
- Drop Point
- Ⓜ Repeater
- ⚠ Safety Zone
- 📡 Lookout
- Helispot
- Ⓜ Camp
- ⊗ Fire Origin
- XXXXX Completed Dozer Line

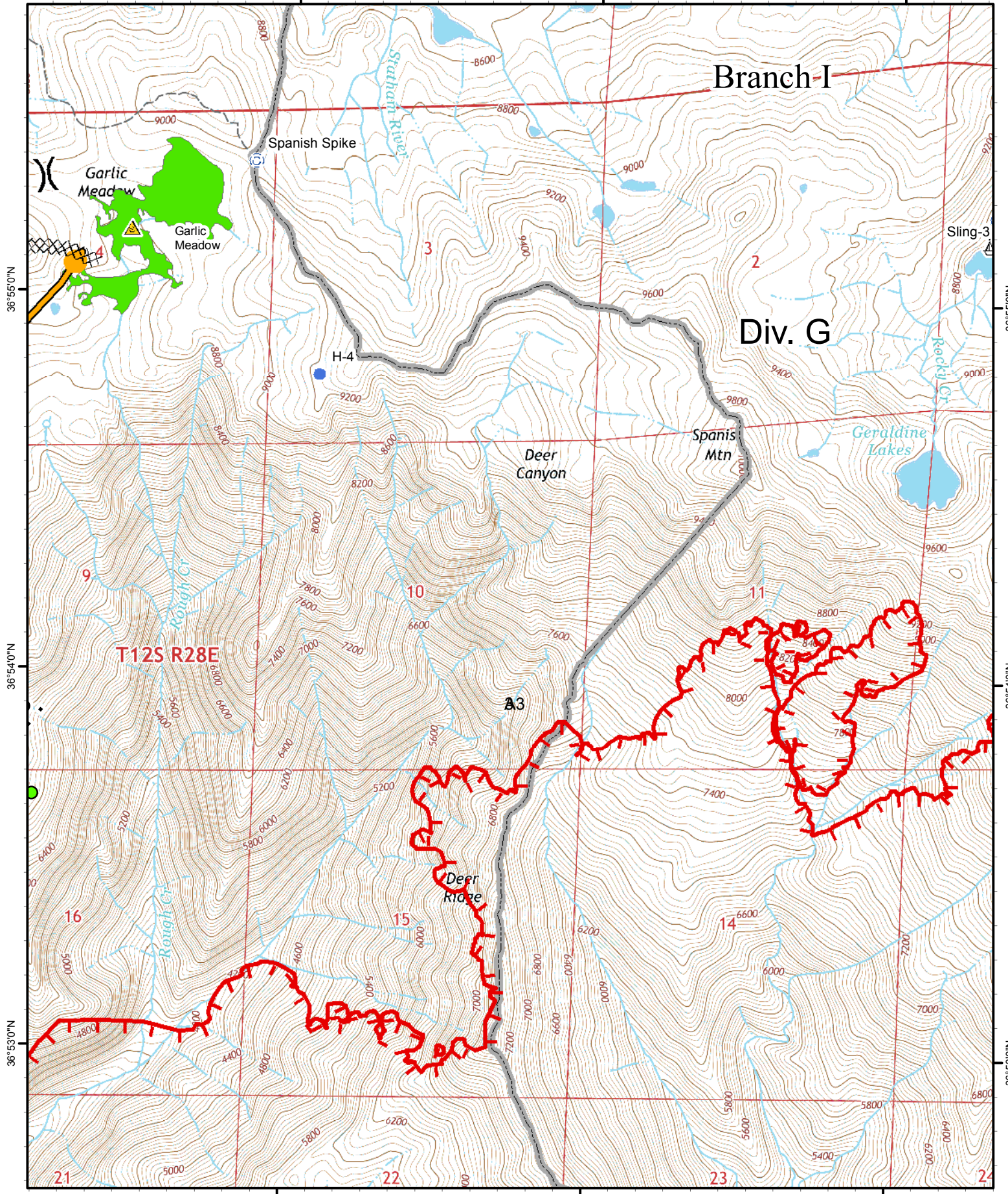


Location Map

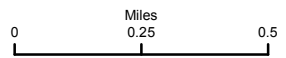
118°55'0"W

118°54'0"W

118°53'0"W

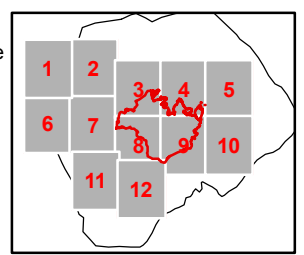


Rough Incident
IAP Map
CA-SNF-001746
NAD83 Datum
August 16, 2015
Day Shift
14,000 Acres
8-15-2015 2230



Legend

- Division
- Aerial Hazard
- Drop Point
- Lookout
- Fire Origin
- Mobile Weather Unit
- Sling Site
- Repeater
- Safety Zone
- Helispot
- Camp
- Completed Dozer Line
- Uncontrolled Fire Edge
- Wilderness Boundary



Location Map

118°52'0"W

118°51'0"W

118°50'0"W

Branch I

Geraldine Spike Camp

Sling-3

H-5

H-6

Obelisk

Div. G

Div. W

Kings National

T12S R28E

A4

Brush Canyon

36°55'0"N

36°55'0"N

36°54'0"N

36°54'0"N

36°53'0"N

36°53'0"N

118°52'0"W

118°51'0"W

118°50'0"W

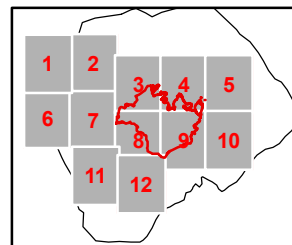
Rough Incident
IAP Map
CA-SNF-001746
NAD83 Datum
August 16, 2015
Day Shift
14,000 Acres
8-15-2015 2230



Miles 0 0.25 0.5

Legend

- Division
- Aerial Hazard
- Drop Point
- Lookout
- Fire Origin
- Mobile Weather Unit
- Sling Site
- Repeater
- Safety Zone
- Helispot
- Camp
- Wilderness Boundary
- Uncontrolled Fire Edge

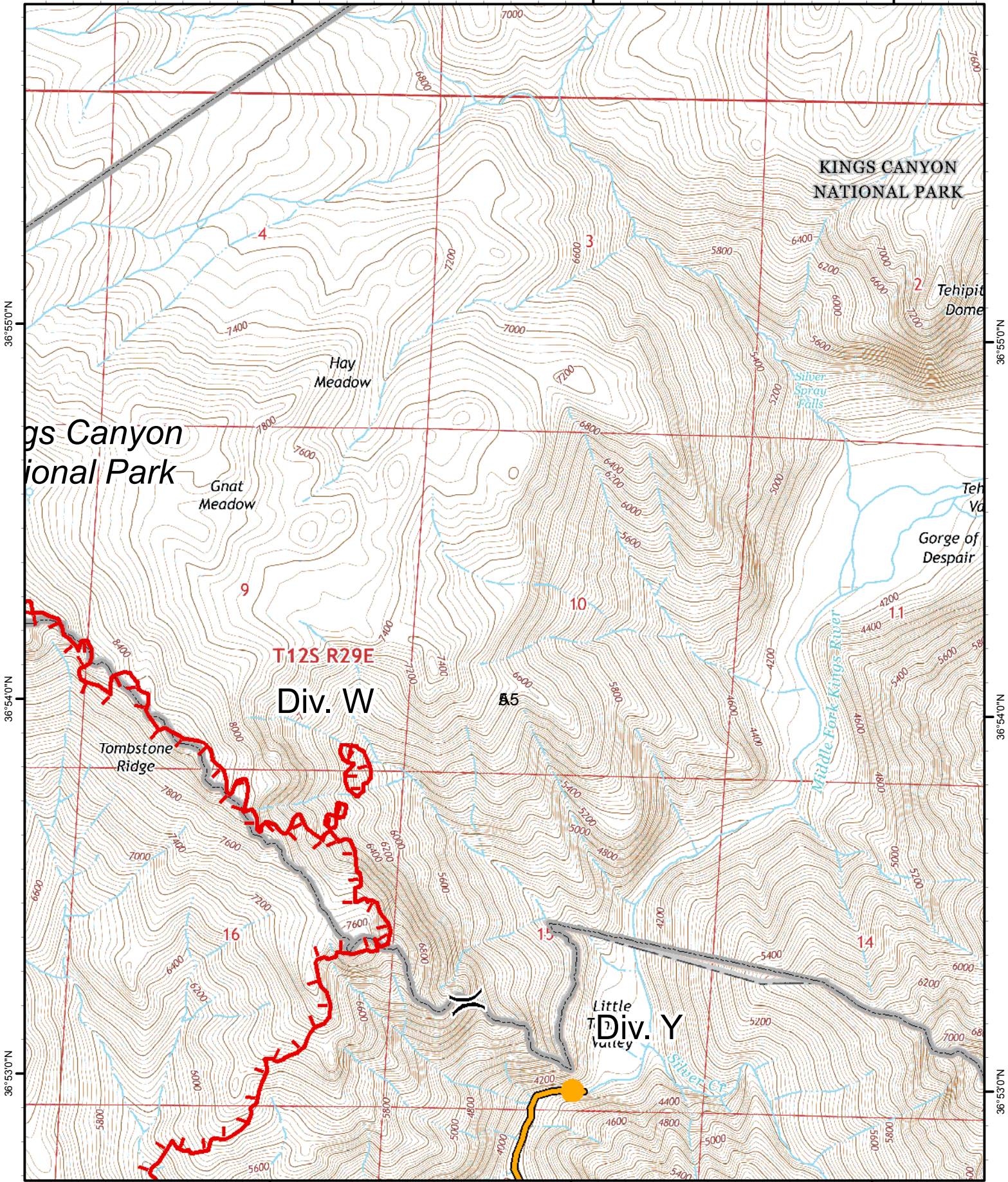


Location Map

118°49'0"W

118°48'0"W

118°47'0"W



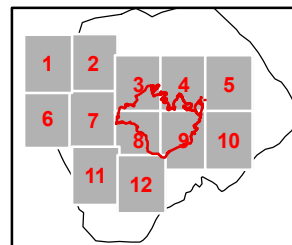
Rough Incident
IAP Map
CA-SNF-001746
NAD83 Datum
August 16, 2015
Day Shift
14,000 Acres
8-15-2015 2230



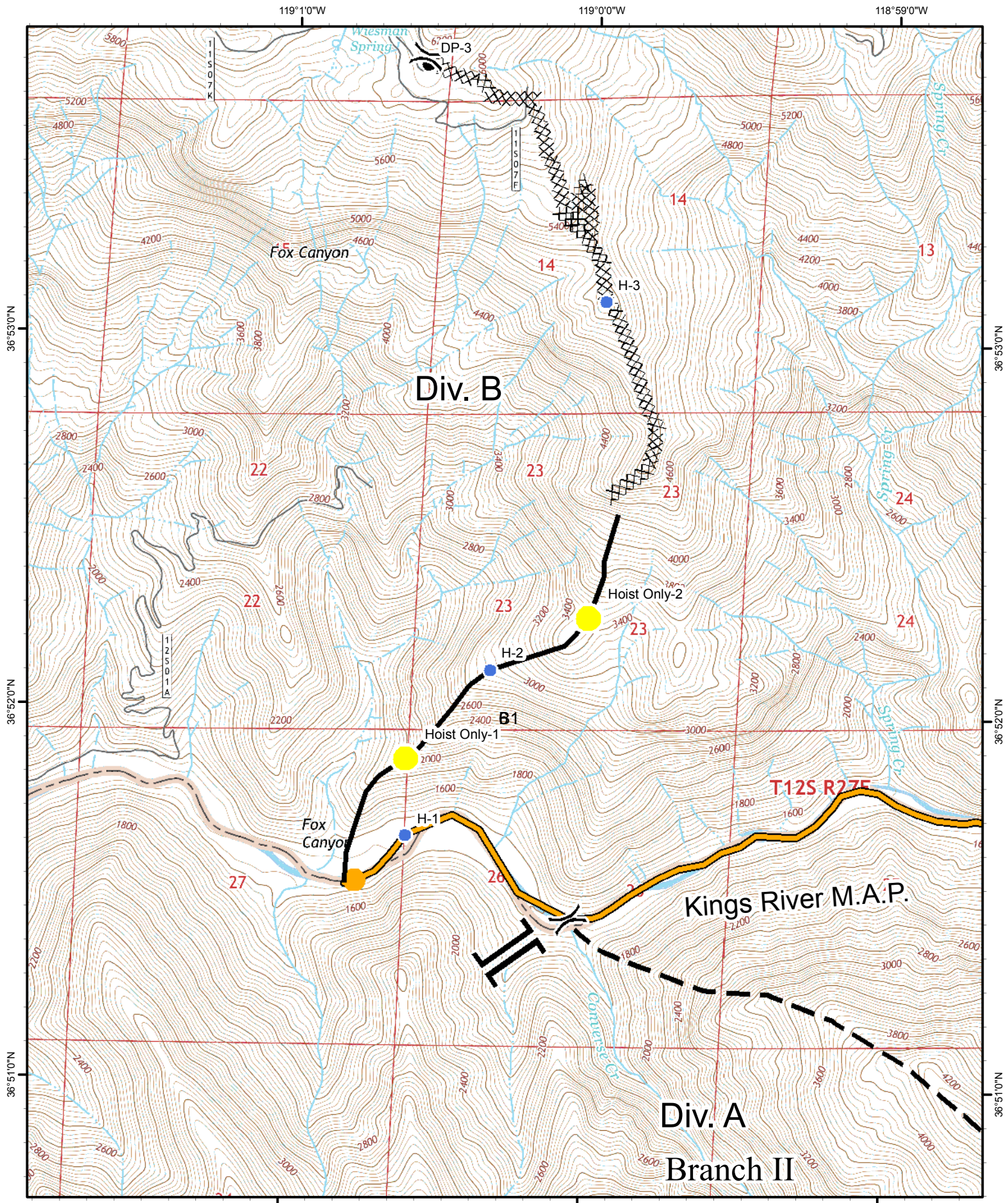
Miles
0 0.25 0.5

Legend

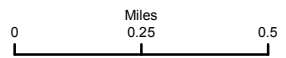
- Division
- Aerial Hazard
- Drop Point
- Lookout
- Fire Origin
- Mobile Weather Unit
- Sling Site
- Repeater
- Safety Zone
- Helispot
- Camp
- Wilderness Boundary
- Uncontrolled Fire Edge



Location Map

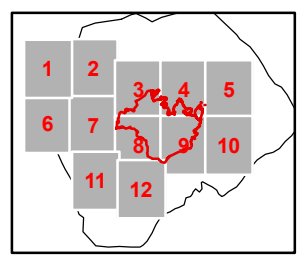


Rough Incident
IAP Map
CA-SNF-001746
NAD83 Datum
August 16, 2015
Day Shift
14,000 Acres
8-15-2015 2230



Legend

- Division
- Aerial Hazard
- Drop Point
- Lookout
- Fire Origin
- Mobile Weather Unit
- Sling Site
- Repeater
- Safety Zone
- Helispot
- Camp
- Completed Dozer Line
- Planned Fire Line
- Completed Line
- Wilderness Boundary

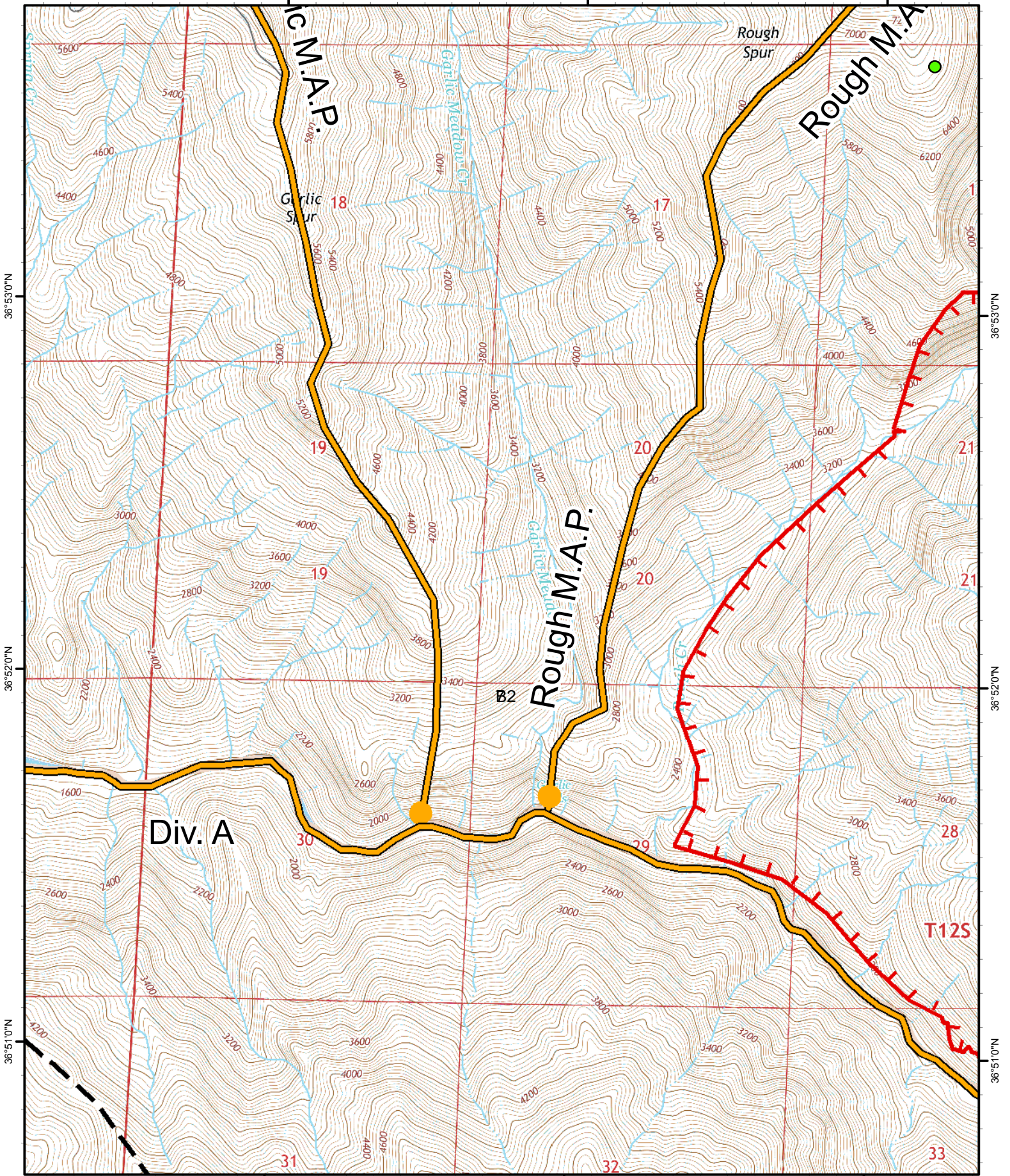


Location Map

118°58'0"W

118°57'0"W

118°56'0"W



Rough Incident
 IAP Map
 CA-SNF-001746
 NAD83 Datum
 August 16, 2015
 Day Shift
 14,000 Acres
 8-15-2015 2230



Miles
 0 0.25 0.5

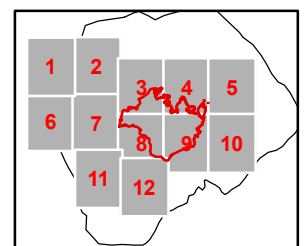
Legend

- () Division
- ▲ Aerial Hazard
- Drop Point
- ⚡ Lookout
- ⊗ Fire Origin

- WX Mobile Weather Unit
- ⚓ Sling Site
- Ⓡ Repeater
- ⚠ Safety Zone
- Helispot
- Ⓢ Camp

- Planned Fire Line
- Wilderness Boundary

┌─┐ Uncontrolled Fire Edge

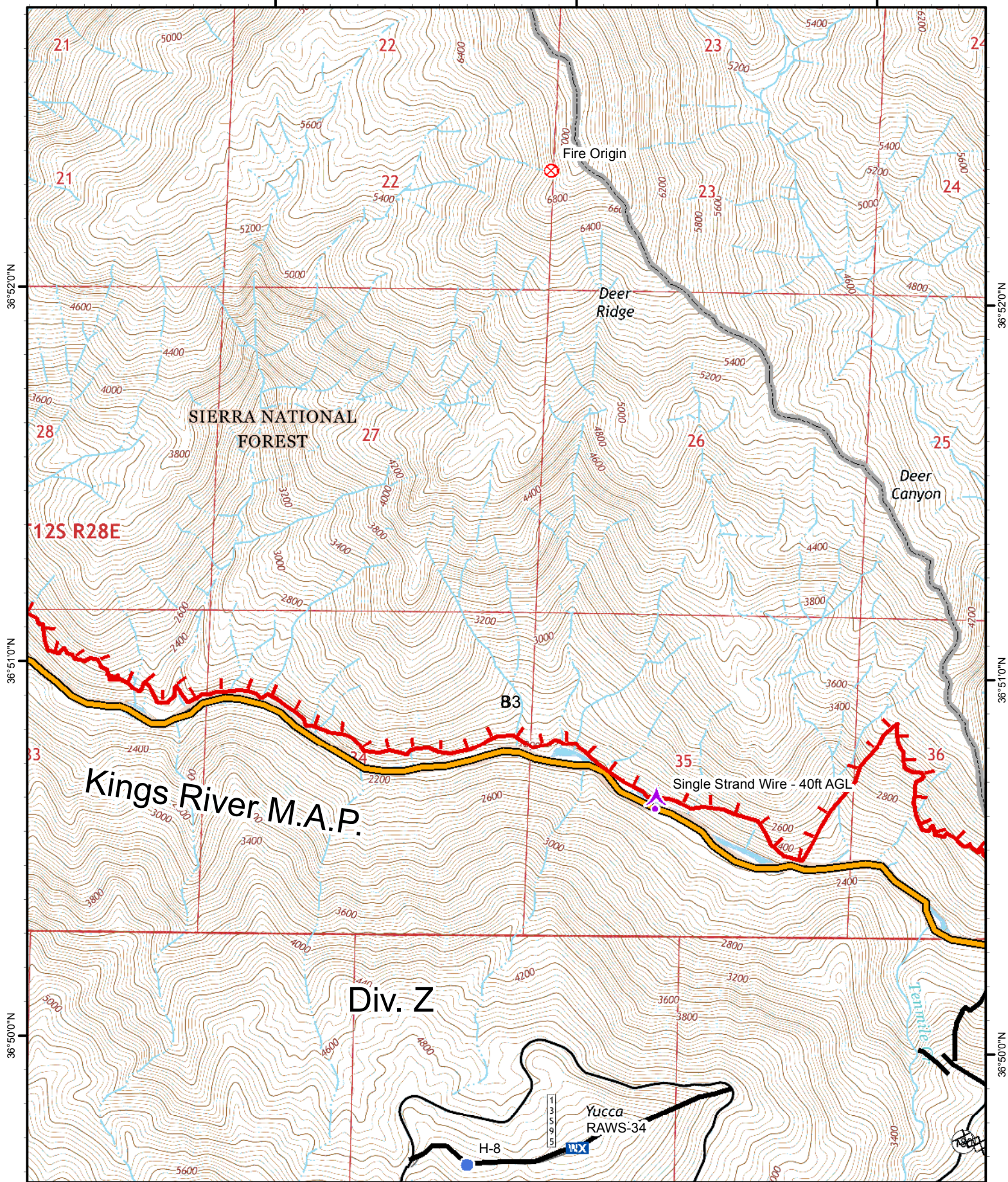


Location Map

118°55'0"W

118°54'0"W

118°53'0"W



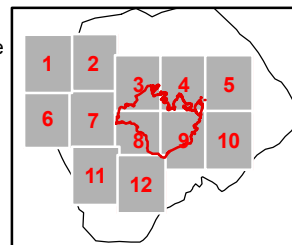
Rough Incident
IAP Map
CA-SNF-001746
NAD83 Datum
August 16, 2015
Day Shift
14,000 Acres
8-15-2015 2230



Miles
0 0.25 0.5

Legend

- Division
- Aerial Hazard
- Drop Point
- Lookout
- Fire Origin
- Mobile Weather Unit
- Sling Site
- Repeater
- Safety Zone
- Helispot
- Camp
- Completed Dozer Line
- Uncontrolled Fire Edge
- Completed Line
- Wilderness Boundary

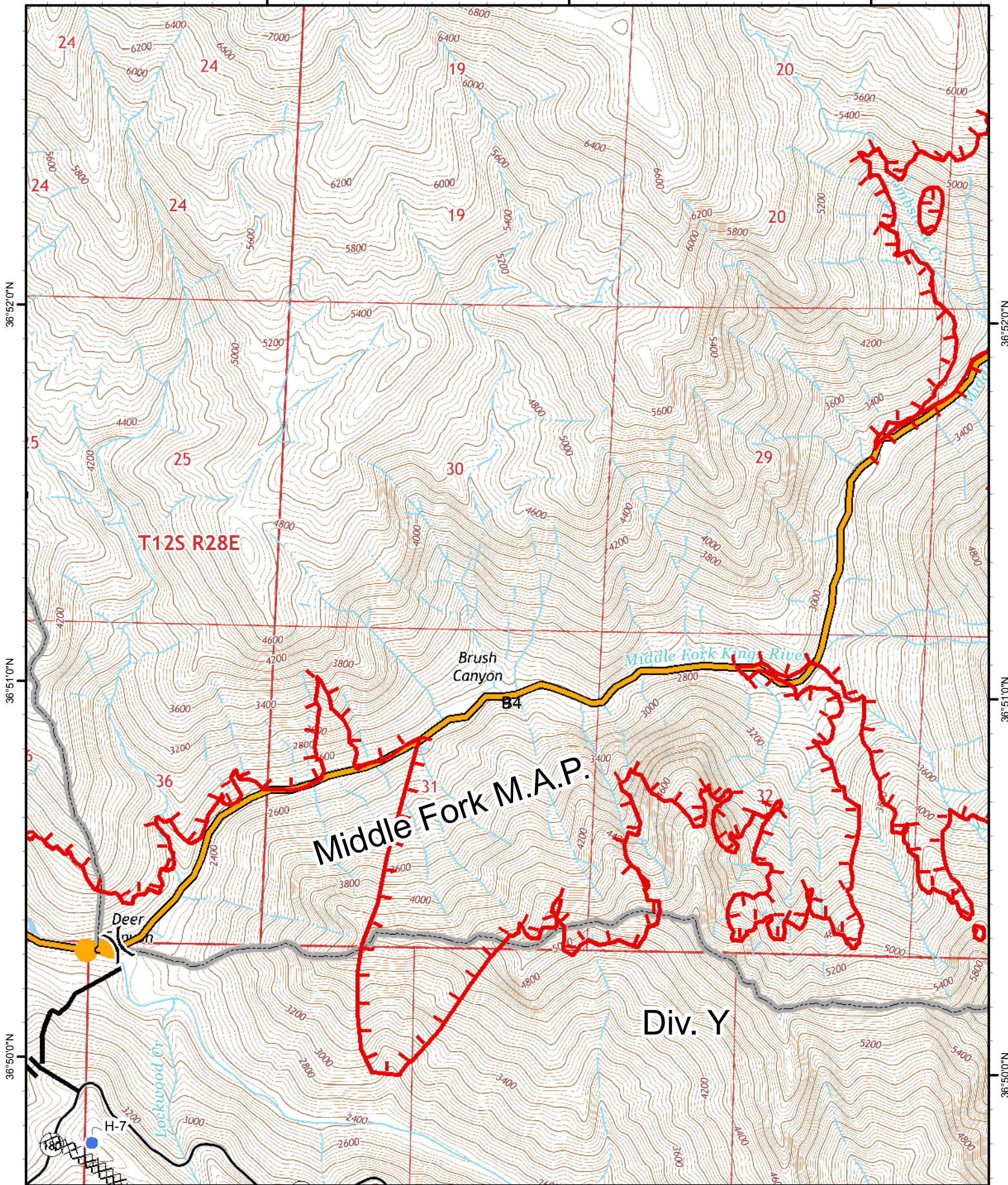


Location Map

118°52'0"W

118°51'0"W

118°50'0"W



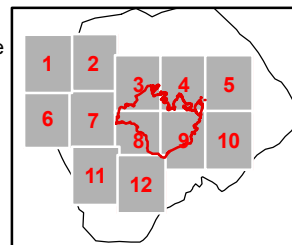
Rough Incident
IAP Map
CA-SNF-001746
NAD83 Datum
August 16, 2015
Day Shift
14,000 Acres
8-15-2015 2230



Miles
0 0.25 0.5

Legend

- Division
- Aerial Hazard
- Drop Point
- Lookout
- Fire Origin
- Mobile Weather Unit
- Sling Site
- Repeater
- Safety Zone
- Helispot
- Camp
- Uncontrolled Fire Edge
- Completed Line
- Wilderness Boundary
- Completed Dozer Line

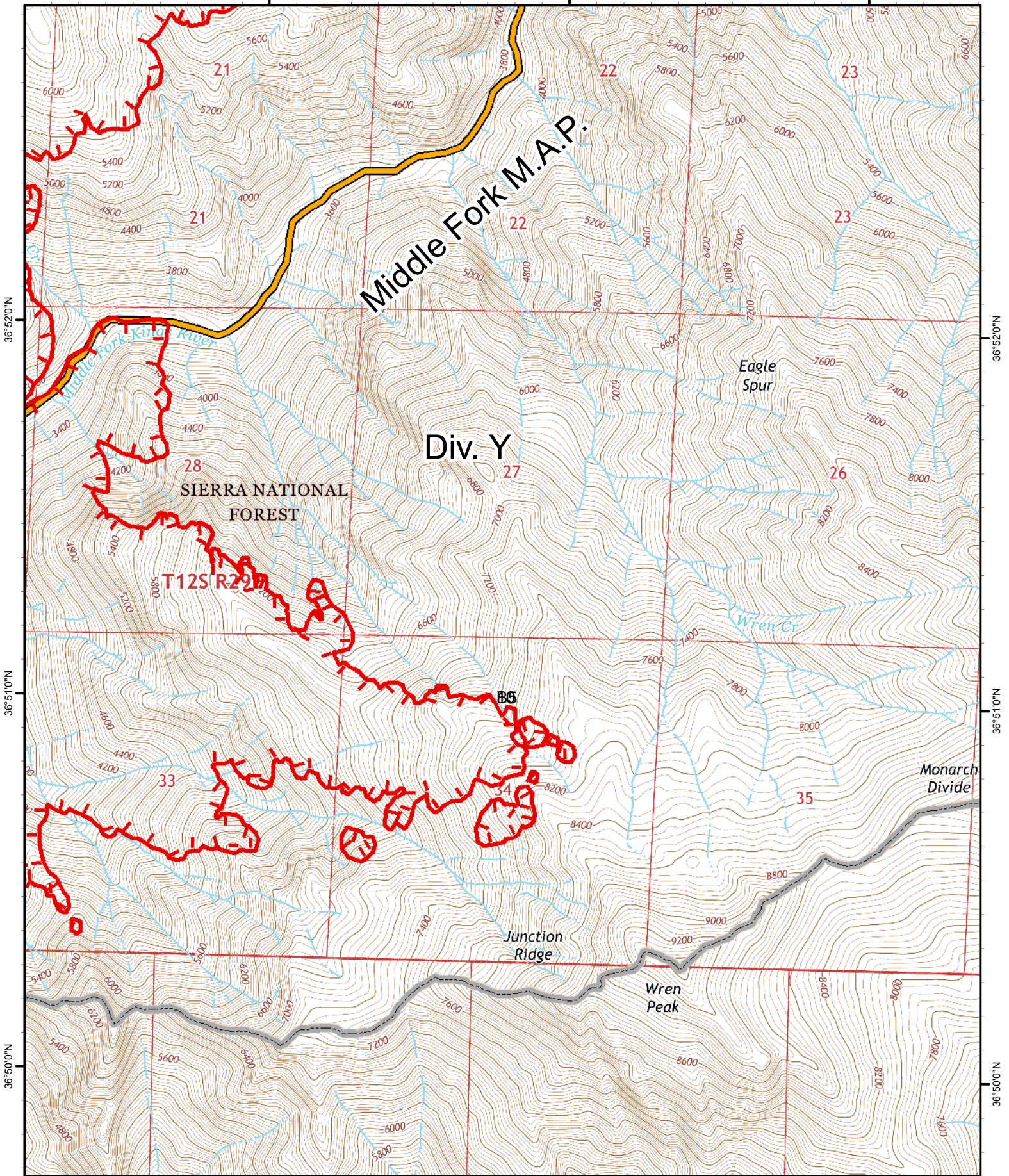


Location Map

118°49'0"W

118°48'0"W

118°47'0"W
















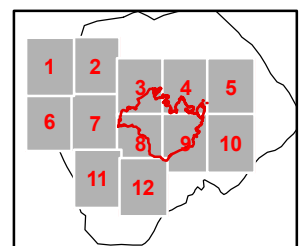
Rough Incident
IAP Map
CA-SNF-001746
NAD83 Datum
August 16, 2015
Day Shift
14,000 Acres
8-15-2015 2230



Miles
0 0.25 0.5

Legend

-  Division
-  Aerial Hazard
-  Drop Point
-  Lookout
-  Fire Origin
-  Mobile Weather Unit
-  Sling Site
-  Repeater
-  Safety Zone
-  Helispot
-  Camp
-  Uncontrolled Fire Edge
-  Wilderness Boundary

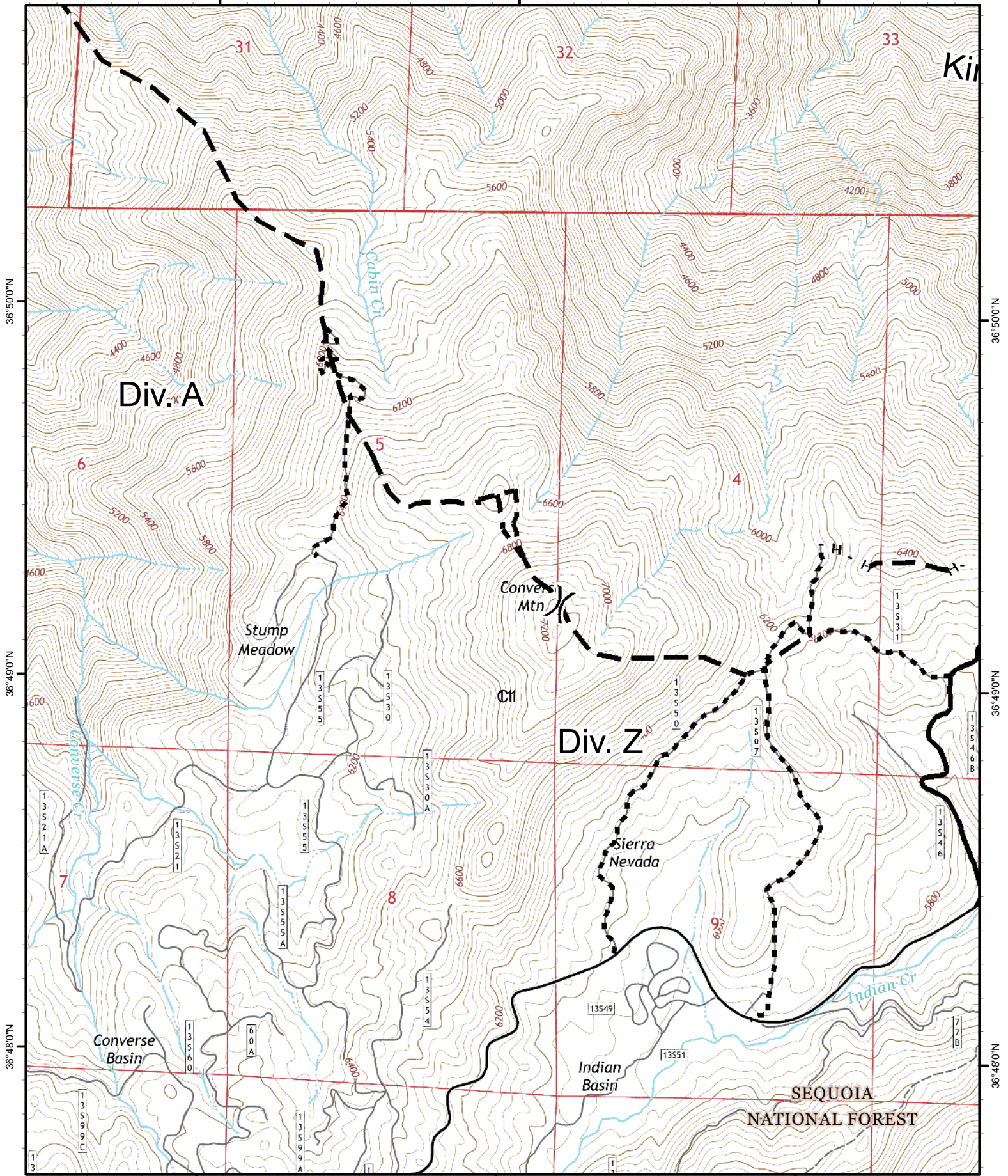


Location Map

118°58'0"W

118°57'0"W

118°56'0"W

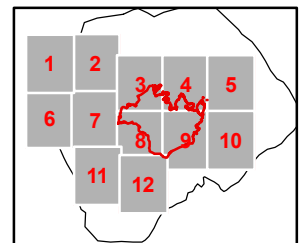


Rough Incident
IAP Map
CA-SNF-001746
NAD83 Datum
August 16, 2015
Day Shift
14,000 Acres
8-15-2015 2230



Legend

- | | | | | | |
|--|---------------|--|---------------------|--|---------------------|
| | Division | | Mobile Weather Unit | | Planned Fire Line |
| | Aerial Hazard | | Sling Site | | Completed Line |
| | Drop Point | | Repeater | | Wilderness Boundary |
| | Lookout | | Safety Zone | | |
| | Fire Origin | | Helispot | | |
| | | | Camp | | |
| | | | Proposed Brush | | |

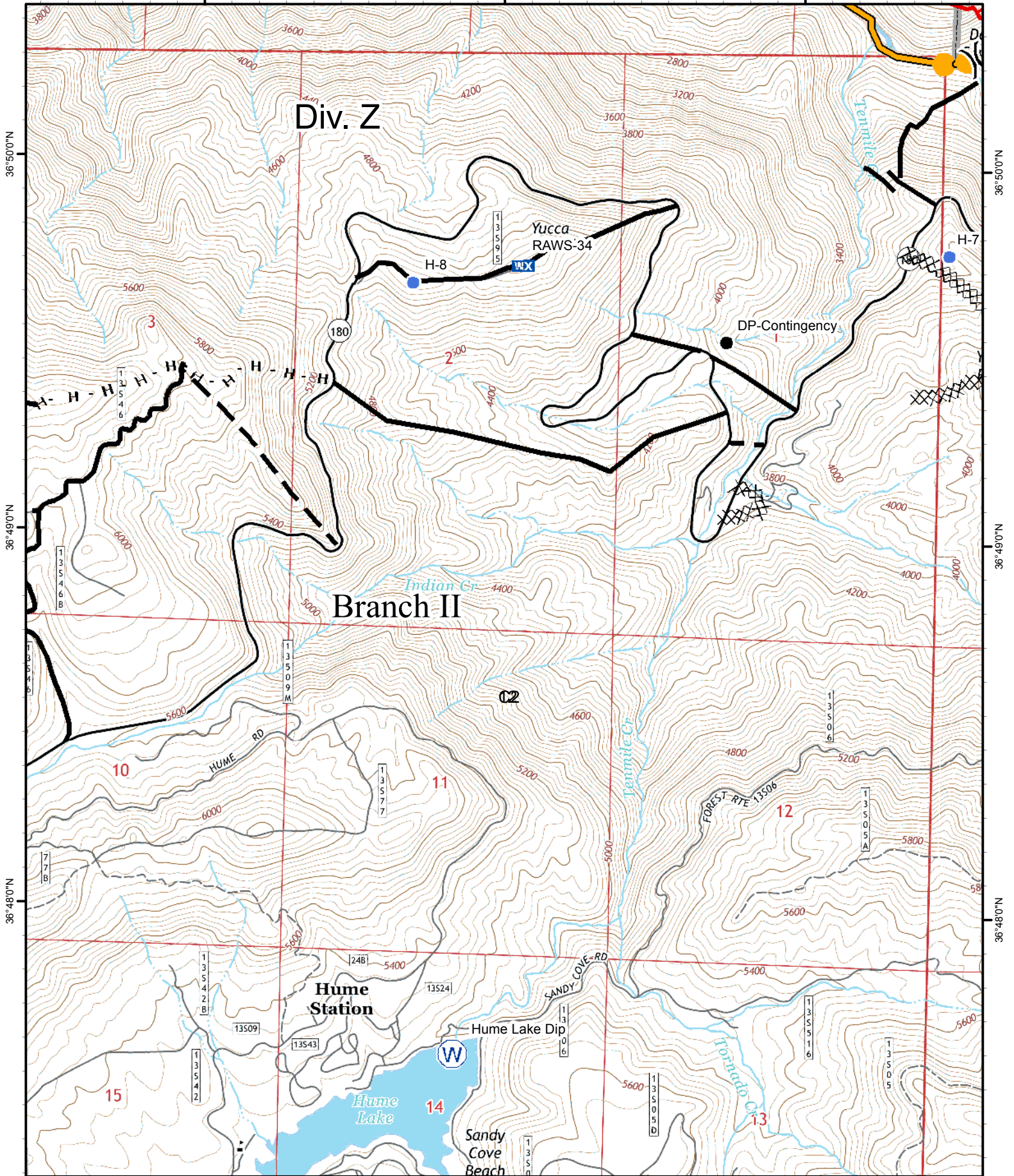


Location Map

118°55'0"W

118°54'0"W

118°53'0"W

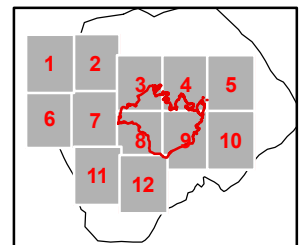


Rough Incident
IAP Map
CA-SNF-001746
NAD83 Datum
August 16, 2015
Day Shift
14,000 Acres
8-15-2015 2230



Legend

- | | | | | | |
|--|---------------|--|---------------------|--|------------------------|
| | Division | | Mobile Weather Unit | | Completed Dozer Line |
| | Aerial Hazard | | Sling Site | | Uncontrolled Fire Edge |
| | Drop Point | | Repeater | | Planned Fire Line |
| | Lookout | | Safety Zone | | Completed Line |
| | Fire Origin | | Helispot | | Wilderness Boundary |
| | | | Camp | | |
| | | | Proposed Brush | | |



Location Map