

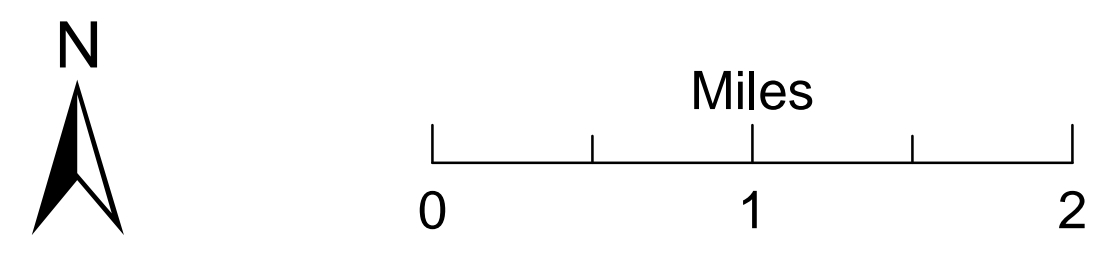
Rough Incident CA-SNF-001746

Imv
2333 Hours
Aug 16, 2015



16,890 Acres
@ 2300 08152016
NAD83 UTM 11

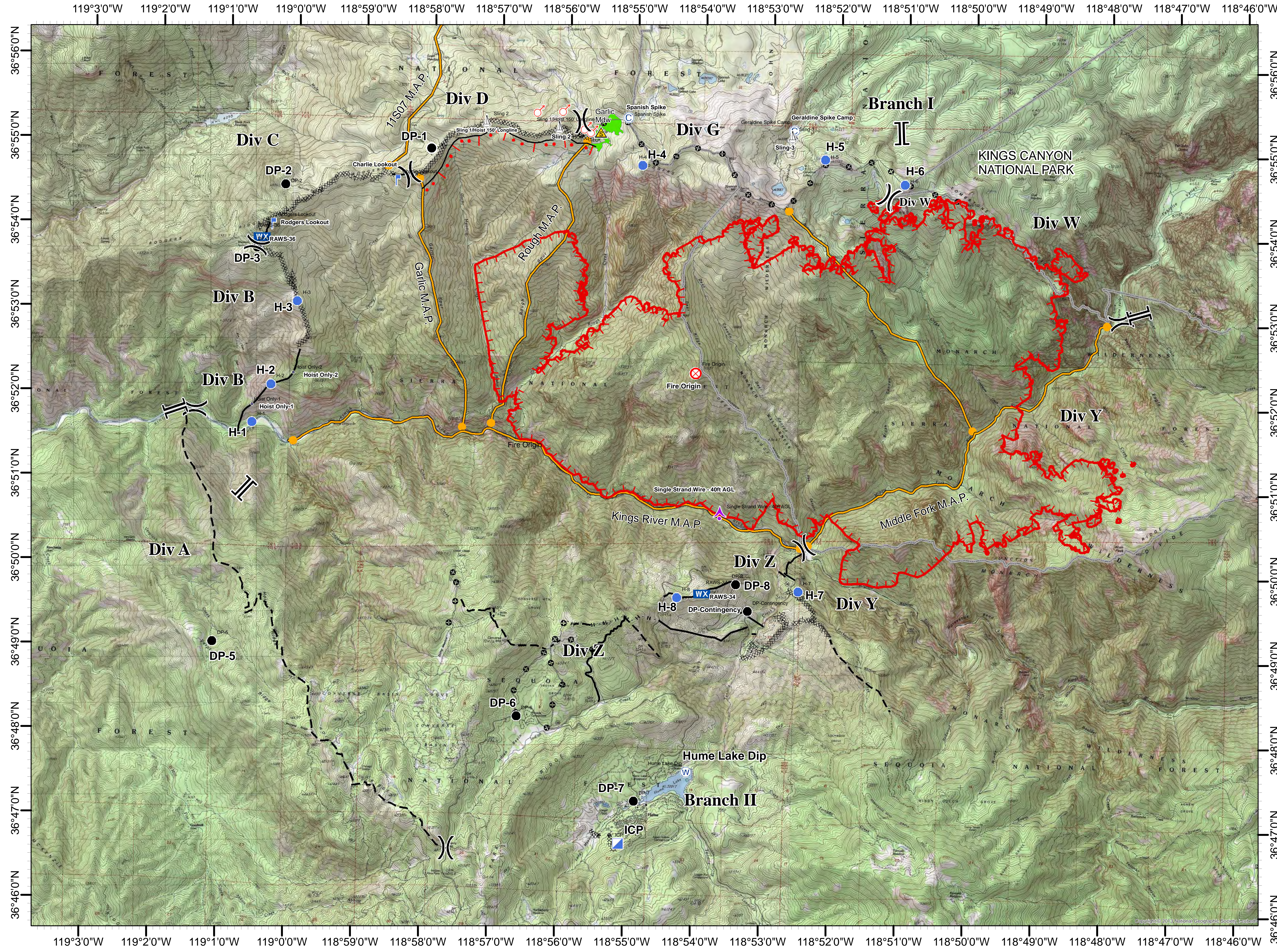
Pilot's Map



Legend

Rough Fire
Day Shift
08172015

- Aerial Hazard
- Drop Point
- Helispot
- Mobile Weather Unit
- Sling Site
- Lookout
- Safety Zone
- Hoist Only
- Uncontrolled Fire Edge
- Completed Line
- Planned Fire Line
- Other
- Wilderness Boundary
- Completed Dozerline
- Proposed Brush
- Management Action Point
- Fire Planning Area



Rough Incident Helispots

Name	Lat	Lon	Elev
H-1	36° 51.670	119° 00.595	1,300'
H-2	36° 52.114	119° 00.326	3,000'
H-3	36° 53.105	118° 59.963	5,000'
H-4	36° 54.794	118° 54.907	9,200'
H-5	36° 54.899	118° 52.216	9,550'
H-6	36° 54.62	118° 7131.04	9,620'
H-7	36° 49.777	118° 52.5	3,580'
H-8	36° 49.681	118° 54.238	5,150'
H-9	36° 57.066	118° 51.130	7,780'

Initial Points

Name	Lat	Lon	Elev
Rogers IN	36° 52.07	119° 8.17	10,000'
Rogers OUT	36° 52.07	119° 8.17	8,500'
Buck Rock	36° 44.23	118° 51.62	9,500'
Patterson	36° 57.72	119° 3.39	3,400'

Rough Incident Sling Sites

Name	Lat	Lon	Elev
Sling-1/Hoist	36° 55.226	118° 56.151	9,300'
Sling-2	36° 55.277	118° 57.220	8,400'
Sling-3	36° 55.210	118° 52.697	8,755'