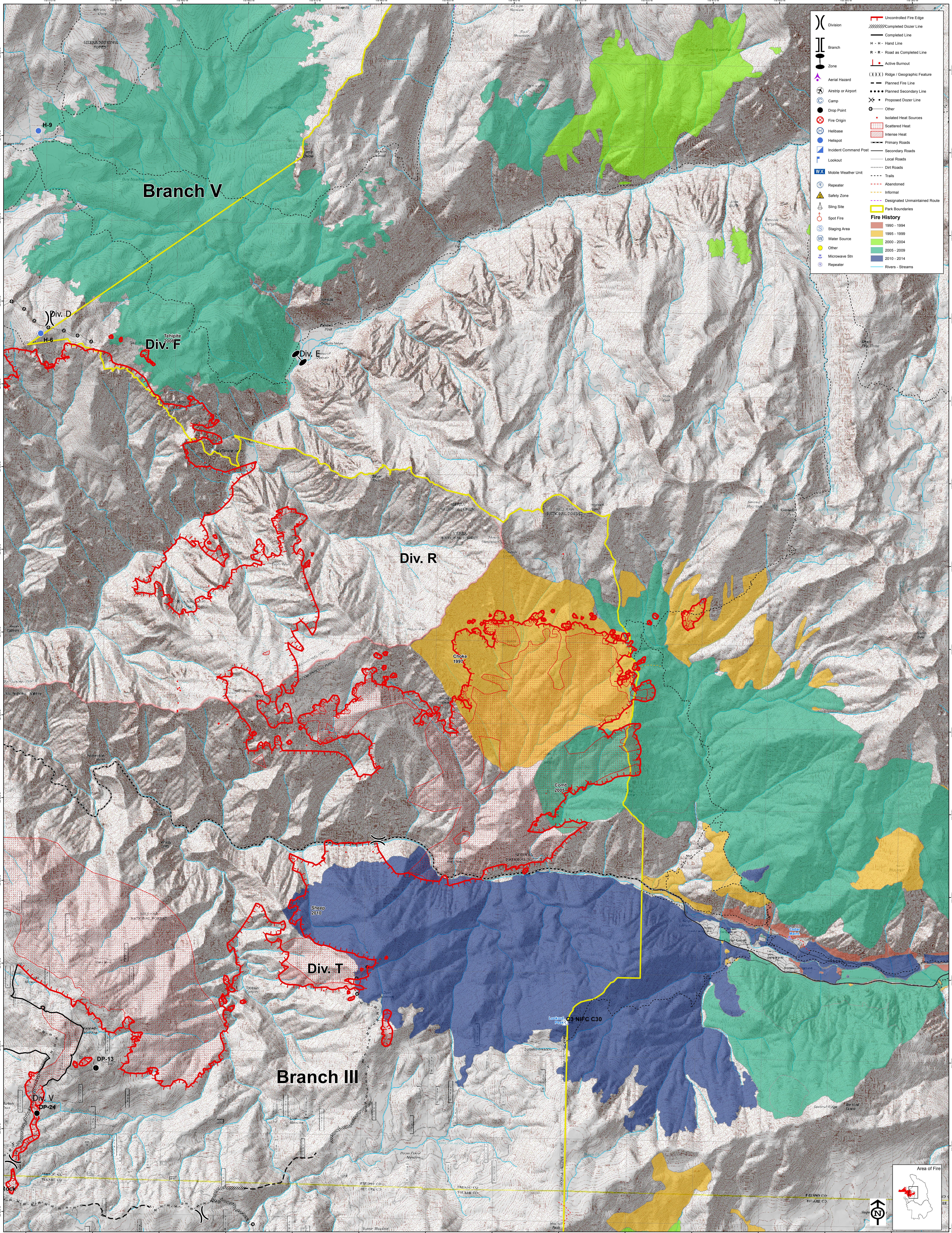


# Rough Fire - 01 SEP @ 0130

Sierra National Forest



(X)	Division	Uncontrolled Fire Edge
	Branch	Completed Dozer Line
●	Zone	Completed Line
○	Aerial Hazard	H - H - Hand Line
⊗	Airstrip or Airport	R - R - Road as Completed Line
⊙	Camp	Active Burnout
●	Drop Point	Ridge / Geographic Feature
⊙	Fire Origin	Planned Fire Line
⊙	Heliport	Planned Secondary Line
⊙	Incident Command Post	Proposed Dozer Line
⊙	Lookout	Other
WX	Mobile Weather Unit	Isolated Heat Sources
⊙	Repeater	Scattered Heat
⊙	Safety Zone	Intense Heat
⊙	Sling Site	Primary Roads
⊙	Spot Fire	Secondary Roads
⊙	Staging Area	Local Roads
⊙	Water Source	Dirt Roads
⊙	Microwave Stn	Trails
⊙	Repeater	Abandoned
		Informal
		Designated Unmaintained Route
		Park Boundaries
<b>Fire History</b>		
		1990 - 1994
		1995 - 1999
		2000 - 2004
		2005 - 2009
		Other
		2010 - 2014
		Rivers - Streams

