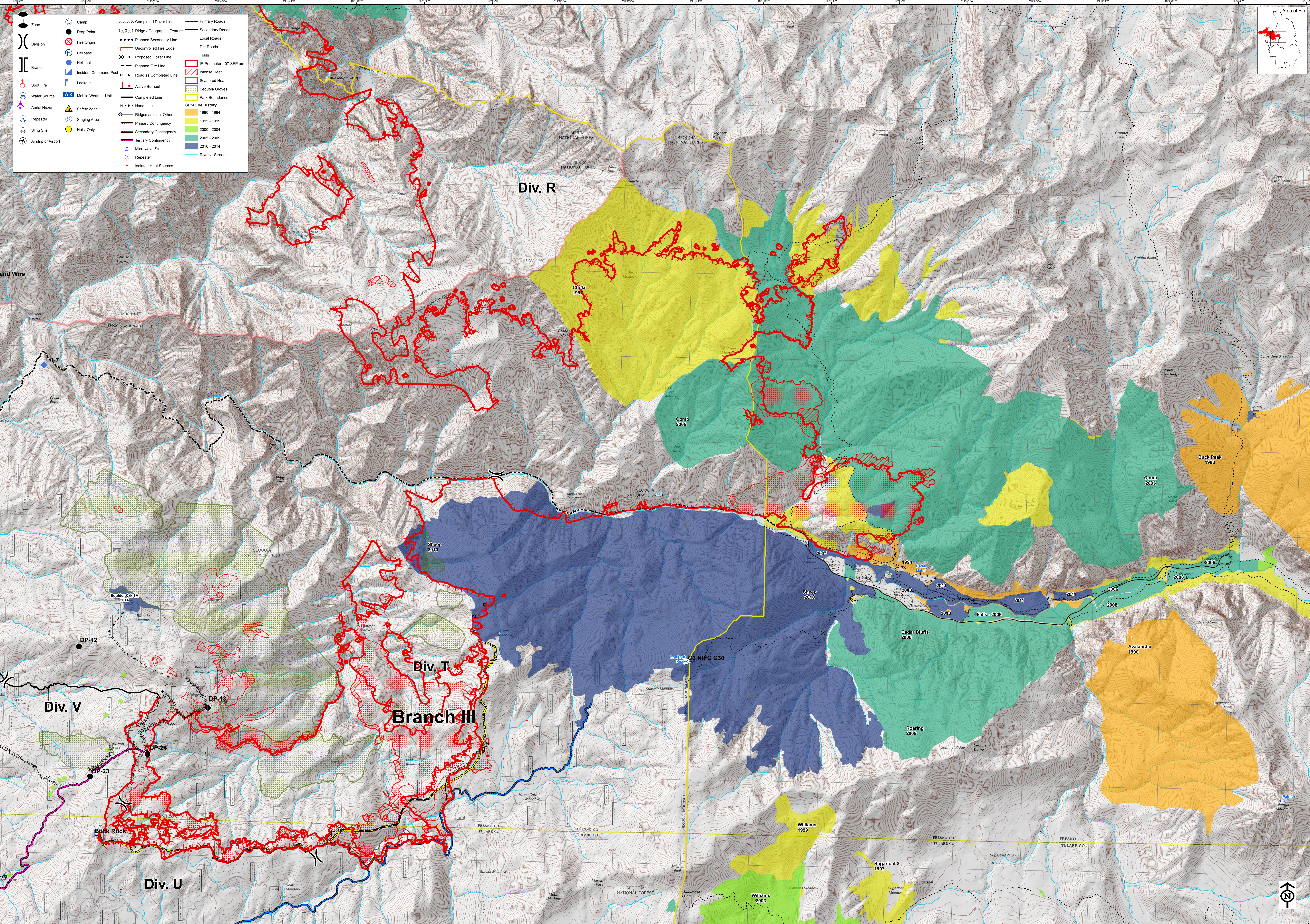


# Rough Fire - 07 SEP @ 0030 - 95,183 Acres

Sierra National Forest



- |                     |                       |                            |                          |
|---------------------|-----------------------|----------------------------|--------------------------|
| Zone                | Camp                  | Completed Dozer Line       | Primary Roads            |
| Division            | Drop Point            | Ridge / Geographic Feature | Secondary Roads          |
| Branch              | Fire Origin           | Planned Secondary Line     | Local Roads              |
| Spot Fire           | Helibase              | Uncontrolled Fire Edge     | Dirt Roads               |
| Water Source        | Helispot              | Proposed Dozer Line        | Trails                   |
| Aerial Hazard       | Incident Command Post | Planned Fire Line          | IR Perimeter - 07 SEP am |
| Repeater            | Lockout               | Active Burnout             | Intense Heat             |
| Sling Site          | Mobile Weather Unit   | Completed Line             | Scattered Heat           |
| Airstrip or Airport | Safety Zone           | Hand Line                  | Sequoia Groves           |
|                     | Staging Area          | Primary Contingency        | Park Boundaries          |
|                     | Hoist Only            | Secondary Contingency      | SEKI Fire History        |
|                     |                       | Tertiary Contingency       | 1990 - 1994              |
|                     |                       | Repeater                   | 1995 - 1999              |
|                     |                       | Isolated Heat Sources      | 2000 - 2004              |
|                     |                       |                            | 2005 - 2009              |
|                     |                       |                            | 2010 - 2014              |
|                     |                       |                            | Rivers - Streams         |