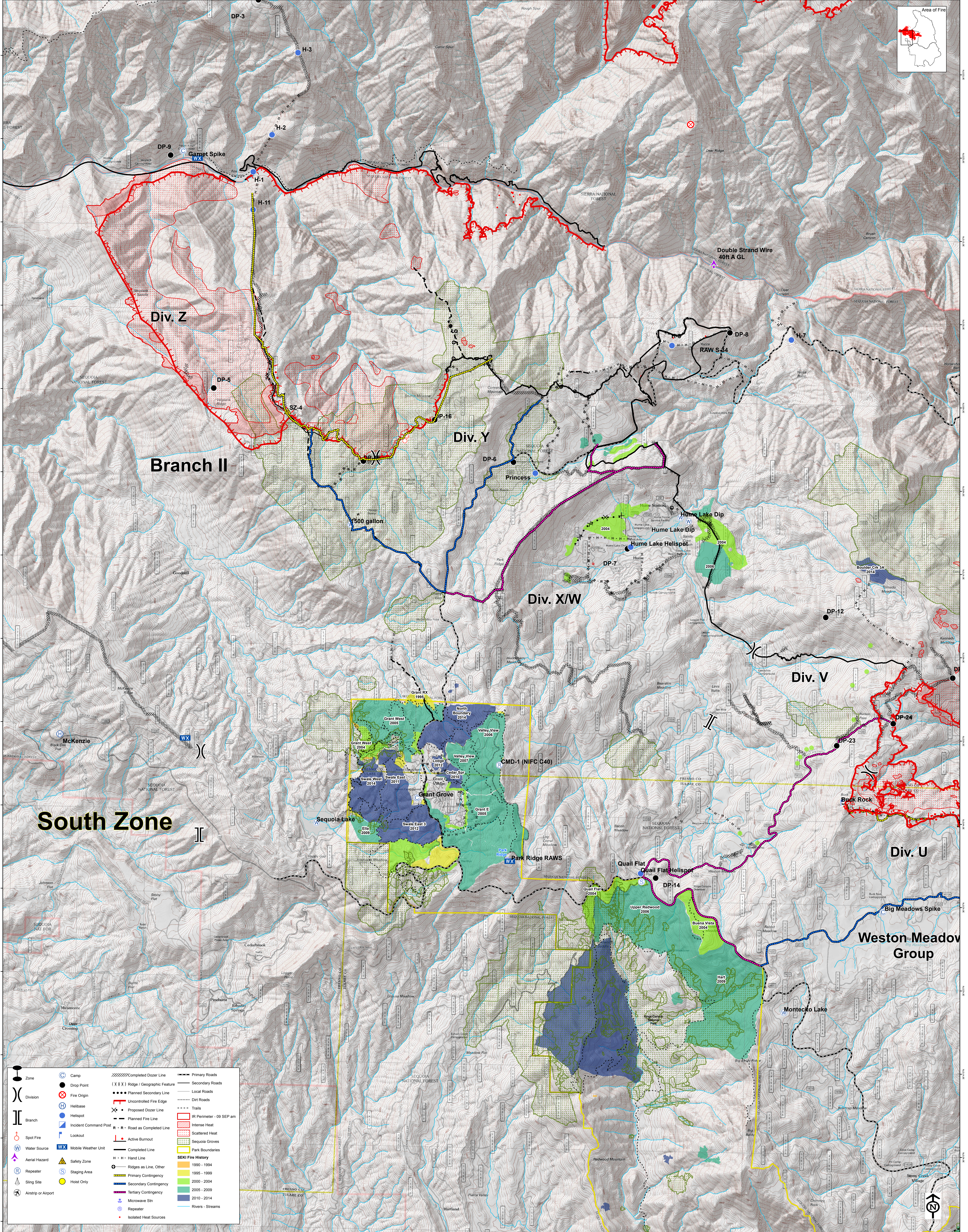
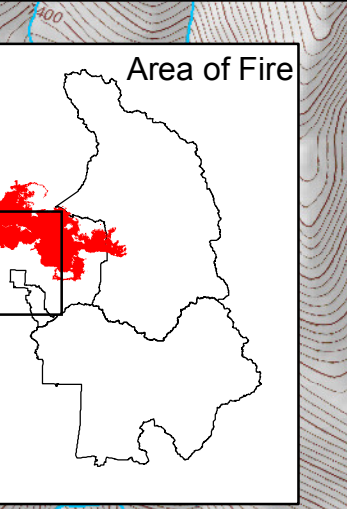


Rough Fire - 08 SEP @ 2100 - 103,244 Acres

Grant Grove Area



| | | | | | | | |
|--|------------------------|--|----------------------------|--|-----------------------------|--|-----------------------------|
| | Zone | | Camp | | Completed Dozer Line | | Primary Roads |
| | Drop Point | | Ridge / Geographic Feature | | Secondary Roads | | Local Roads |
| | Fire Origin | | Planned Secondary Line | | Dirt Roads | | Trails |
| | Uncontrolled Fire Edge | | Proposed Dozer Line | | IR Perimeter - 09 SEP am | | Intense Heat |
| | Helibase | | Planned Fire Line | | Scattered Heat | | Sequoia Groves |
| | Helispot | | Road as Completed Line | | SEKI Fire History 1990-1994 | | SEKI Fire History 1995-1999 |
| | Incident Command Post | | Active Burnout | | SEKI Fire History 2000-2004 | | SEKI Fire History 2005-2009 |
| | Lookout | | Completed Line | | SEKI Fire History 2010-2014 | | Rivers - Streams |
| | Spot Fire | | Hand Line | | | | |
| | Water Source | | Ridges as Line, Other | | | | |
| | Aerial Hazard | | Primary Contingency | | | | |
| | Repeater | | Secondary Contingency | | | | |
| | Sling Site | | Tertiary Contingency | | | | |
| | Airstrip or Airport | | Microwave Site | | | | |
| | | | Repeater | | | | |
| | | | Isolated Heat Sources | | | | |

0 0.5 1 Miles

1:24,000