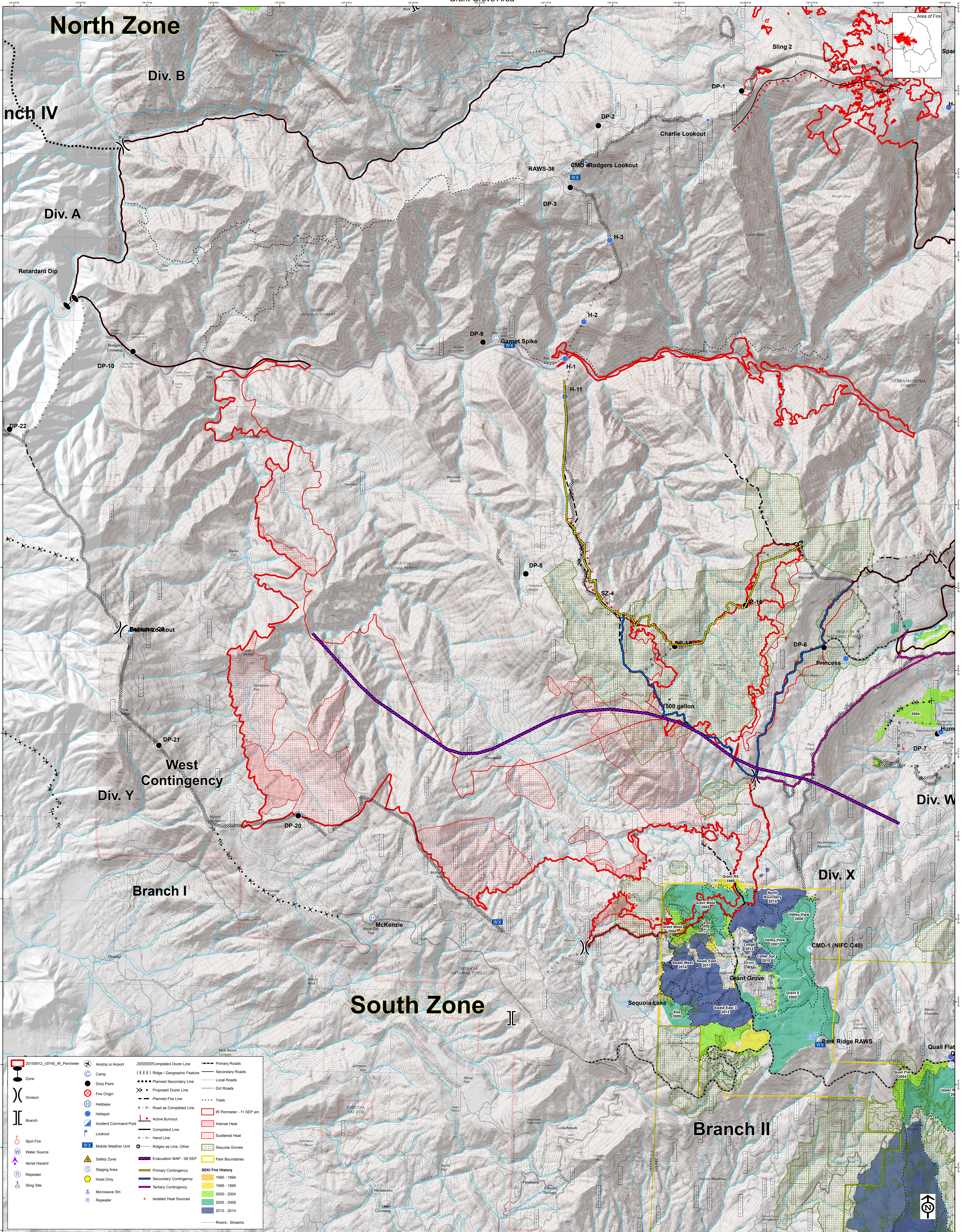


# Rough Fire - 12 SEP @ 0745 - 128,670 Acres

Grant Grove Area



## North Zone

### Branch IV

### Div. A

### Div. B

### Retardant Dip

### DP-10

### DP-22

### DP-21

### DP-20

### Div. Y

### Branch I

### DP-9

### DP-3

### DP-5

### DP-6

## South Zone

### Branch II

### Div. X

### Div. W

	20150912_c0745_IR Perimeter		Airstrip or Airport		Completed Dozer Line		Primary Roads
	Zone		Camp		Ridge/Geographic Feature		Secondary Roads
	Division		Drop Point		Planned Secondary Line		Local Roads
	Branch		Fire Origin		Proposed Dozer Line		Dirt Roads
	Spot Fire		Helibase		Planned Fire Line		Trails
	Water Source		Helipoint		R-R Road as Completed Line		IR Perimeter - 11 SEP am
	Aerial Hazard		Incident Command Post		Completed Line		Intense Heat
	Repeater		Lookout		Hand Line		Scattered Heat
	Sling Site		Mobile Weather Unit		Ridges as Line, Other		Sequoia Groves
	Safety Zone		Staging Area		Evacuation MAP - 08 SEP		Park Boundaries
	Host Only		SEKI Fire History 1990 - 1994		Primary Contingency		SEKI Fire History 1995 - 1999
	Microwave Stn		SEKI Fire History 2000 - 2004		Secondary Contingency		SEKI Fire History 2005 - 2009
	Repeater		SEKI Fire History 2010 - 2014		Tertiary Contingency		Rivers - Streams
	Isolated Heat Sources						

0 0.5 1 Miles

1:24,000