

118°56'0"W 118°55'0"W 118°54'0"W 118°53'0"W 118°52'0"W 118°51'0"W 118°50'0"W

36°54'0"N

36°53'0"N

36°52'0"N

36°51'0"N

36°50'0"N

36°54'0"N





36°53'0"N

36°52'0"N

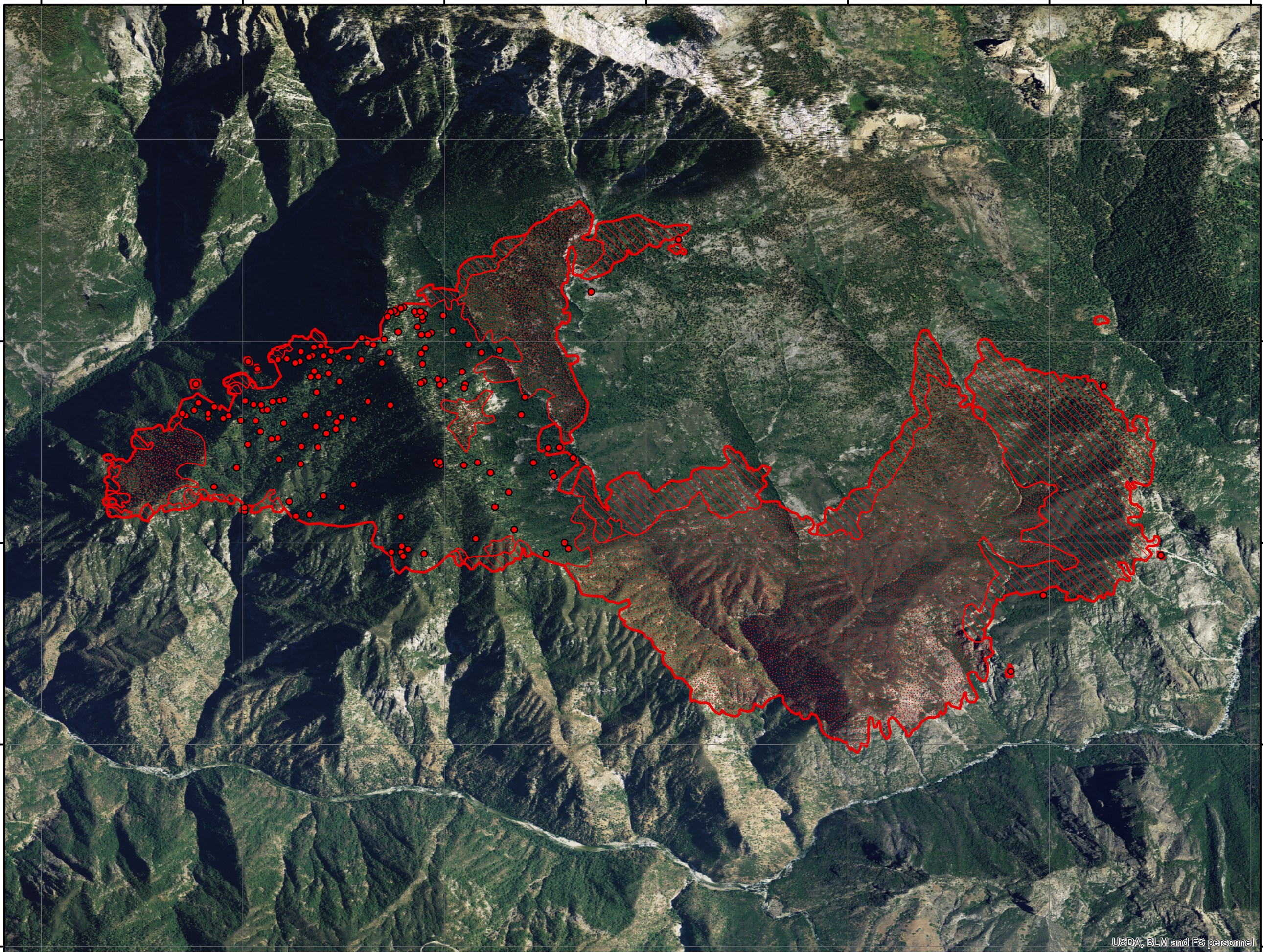
36°51'0"N

36°50'0"N

# Rough Fire Infrared Heat Sources CA-SNF-001746 1:34,000

-  Heat Perimeter
-  Intense Heat Areas
-  Scattered Heat Areas
-  Isolated Heat Sources

GCS North American 1983



IR Interpreter: Brian Monroe  
 IR interpreted acres: 3,776  
 Date: 08/10/2015  
 Time received the Image: 2051 hrs

USDA, BLM and FS personnel

118°56'0"W 118°55'0"W 118°54'0"W 118°53'0"W 118°52'0"W 118°51'0"W 118°50'0"W