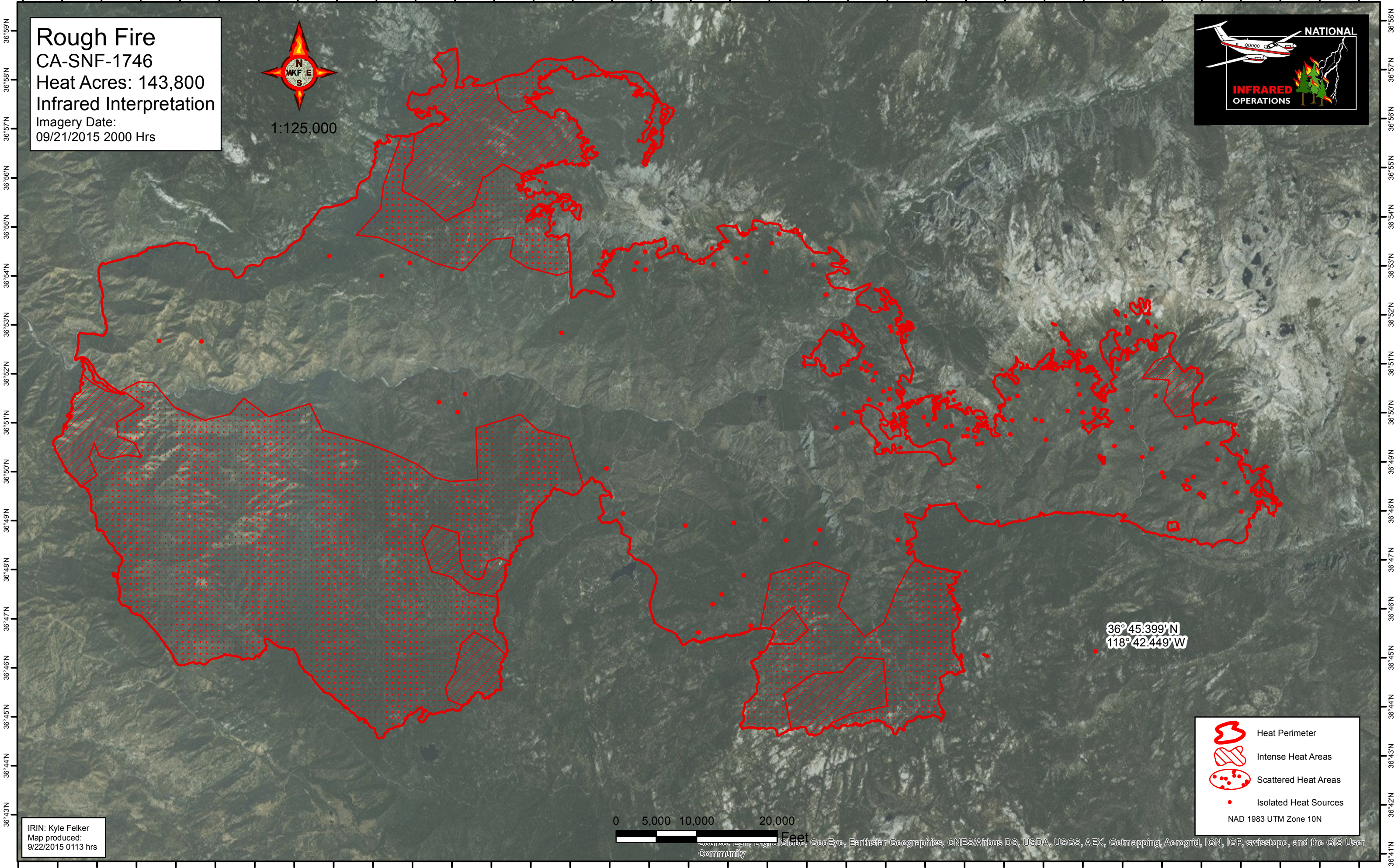


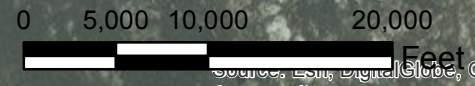
119°9'W 119°8'W 119°7'W 119°6'W 119°5'W 119°4'W 119°3'W 119°2'W 119°1'W 119°0'W 118°59'W 118°58'W 118°57'W 118°56'W 118°55'W 118°54'W 118°53'W 118°52'W 118°51'W 118°50'W 118°49'W 118°48'W 118°47'W 118°46'W 118°45'W 118°44'W 118°43'W 118°42'W 118°41'W 118°40'W 118°39'W 118°38'W 118°37'W 118°36'W 118°35'W





Rough Fire
CA-SNF-1746
Heat Acres: 143,800
Infrared Interpretation
Imagery Date:
09/21/2015 2000 Hrs



36°45.399'N
118°42.449'W

IRIN: Kyle Felker
Map produced:
9/22/2015 0113 hrs



-  Heat Perimeter
 -  Intense Heat Areas
 -  Scattered Heat Areas
 -  Isolated Heat Sources
- NAD 1983 UTM Zone 10N

119°10'W 119°9'W 119°8'W 119°7'W 119°6'W 119°5'W 119°4'W 119°3'W 119°2'W 119°1'W 119°0'W 118°59'W 118°58'W 118°57'W 118°56'W 118°55'W 118°54'W 118°53'W 118°52'W 118°51'W 118°50'W 118°49'W 118°48'W 118°47'W 118°46'W 118°45'W 118°44'W 118°43'W 118°42'W 118°41'W 118°40'W 118°39'W 118°38'W 118°37'W 118°36'W

36°59'N
36°58'N
36°57'N
36°56'N
36°55'N
36°54'N
36°53'N
36°52'N
36°51'N
36°50'N
36°49'N
36°48'N
36°47'N
36°46'N
36°45'N
36°44'N
36°43'N
36°42'N
36°41'N

36°58'N
36°57'N
36°56'N
36°55'N
36°54'N
36°53'N
36°52'N
36°51'N
36°50'N
36°49'N
36°48'N
36°47'N
36°46'N
36°45'N
36°44'N
36°43'N
36°42'N
36°41'N

Source: Esri, DigitalGlobe, GeoEye, Earthstar Geographics, CNES/Airbus DS, USDA, USGS, AEX, Getmapping, Aerogrid, IGN, IGP, swisstopo, and the GIS User Community