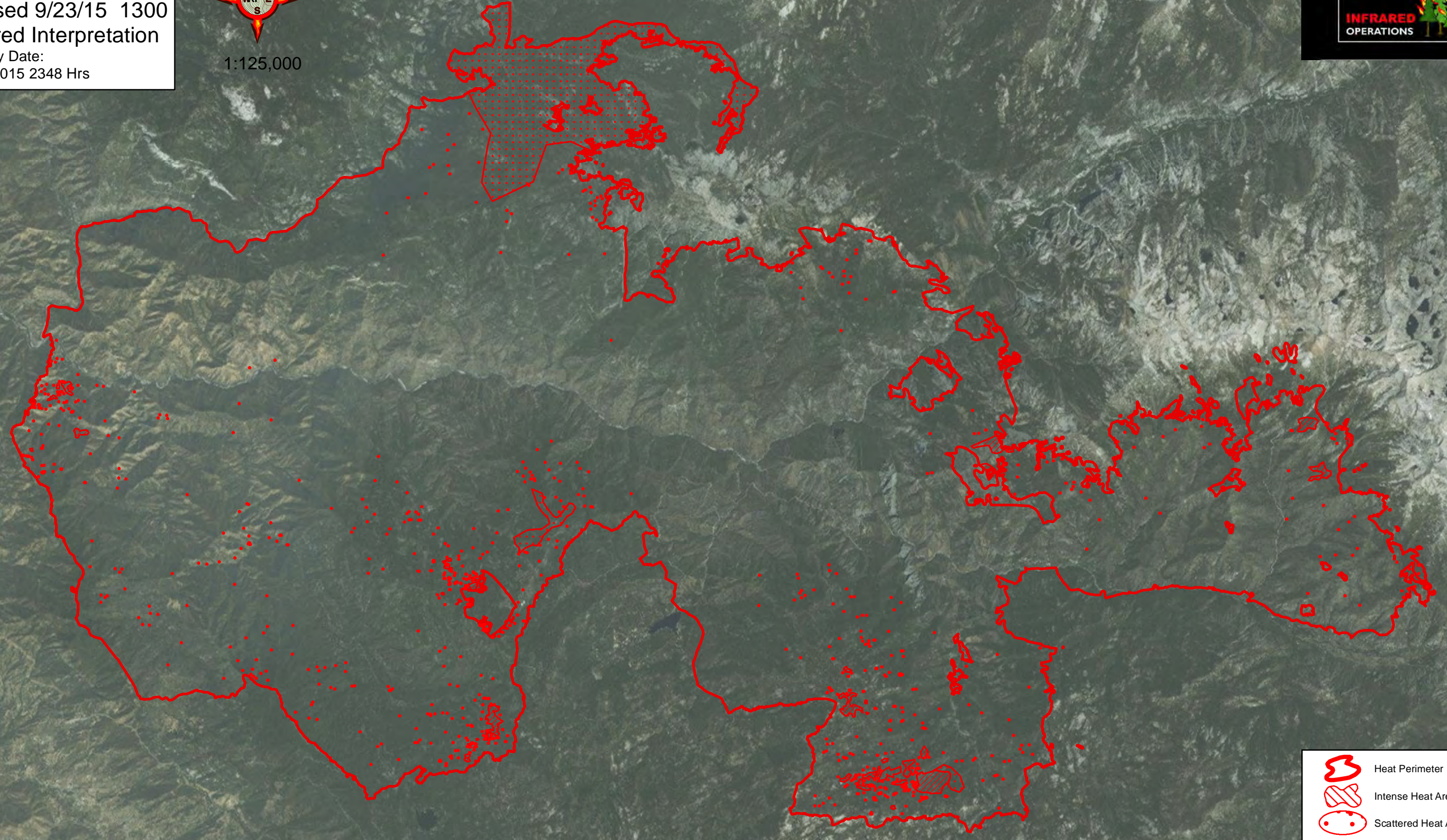


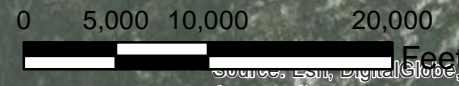
119°10'W 119°9'W 119°8'W 119°7'W 119°6'W 119°5'W 119°4'W 119°3'W 119°2'W 119°1'W 119°0'W 118°59'W 118°58'W 118°57'W 118°56'W 118°55'W 118°54'W 118°53'W 118°52'W 118°51'W 118°50'W 118°49'W 118°48'W 118°47'W 118°46'W 118°45'W 118°44'W 118°43'W 118°42'W 118°41'W 118°40'W 118°39'W 118°38'W 118°37'W

Rough Fire
CA-SNF-1746
Revised 9/23/15 1300
Infrared Interpretation
Imagery Date:
09/22/2015 2348 Hrs



- Heat Perimeter
 - Intense Heat Areas
 - Scattered Heat Areas
 - Isolated Heat Sources
- NAD 1983 UTM Zone 11N

IRIN: Kyle Felker
Map produced:
9/23/2015 1345 hrs



119°10'W 119°9'W 119°8'W 119°7'W 119°6'W 119°5'W 119°4'W 119°3'W 119°2'W 119°1'W 119°0'W 118°59'W 118°58'W 118°57'W 118°56'W 118°55'W 118°54'W 118°53'W 118°52'W 118°51'W 118°50'W 118°49'W 118°48'W 118°47'W 118°46'W 118°45'W 118°44'W 118°43'W 118°42'W 118°41'W 118°40'W 118°39'W 118°38'W 118°37'W

Source: Esri, DigitalGlobe, GeoEye, Earthstar Geographics, CNES/Airbus DS, USDA, USGS, AEX, Getmapping, Aerogrid, IGN, IGP, swisstopo, and the GIS User Community