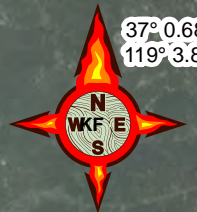


119°14'W 119°13'W 119°12'W 119°11'W 119°10'W 119°9'W 119°8'W 119°7'W 119°6'W 119°5'W 119°4'W 119°3'W 119°2'W 119°1'W 119°0'W 118°59'W 118°58'W 118°57'W 118°56'W 118°55'W 118°54'W 118°53'W 118°52'W 118°51'W 118°50'W 118°49'W 118°48'W 118°47'W 118°46'W 118°45'W 118°44'W 118°43'W 118°42'W 118°41'W 118°40'W 118°39'W 118°38'W 118°37'W 118°36'W 118°35'W 118°34'W 118°33'W

**Rough Fire**  
**CA-SNF-1746**

**Infrared Interpretation**  
Imagery Date:  
09/25/2015 2031 Hrs



1:150,000

37° 0.686' N  
119° 3.868' W

37° 0.640' N  
119° 3.818' W

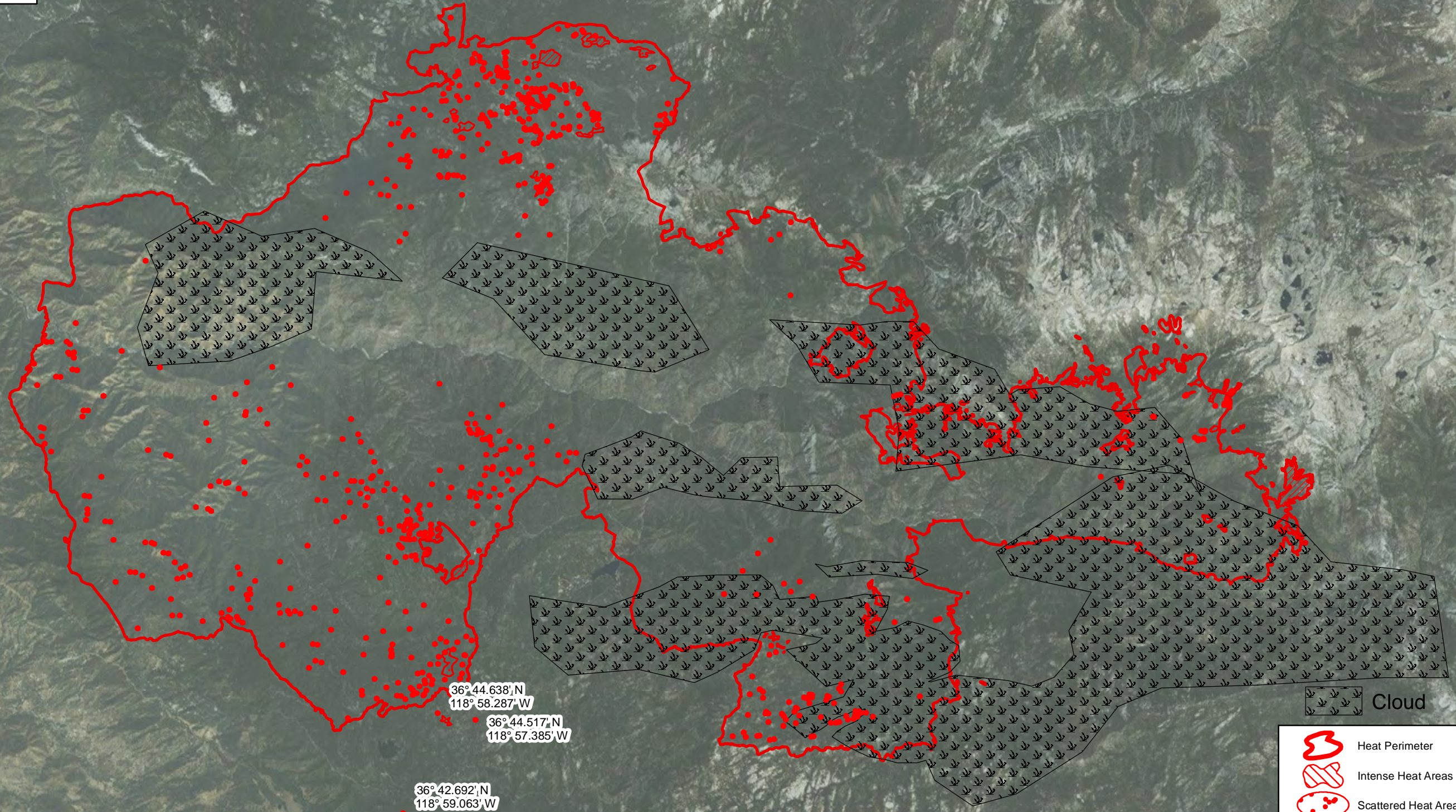
37° 0.467' N  
118° 58.646' W

36° 58.927' N  
118° 58.328' W

36° 44.638' N  
118° 58.287' W

36° 44.517' N  
118° 57.385' W

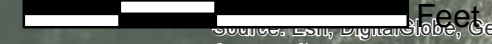
36° 42.692' N  
118° 59.063' W



Cloud

- Heat Perimeter
  - Intense Heat Areas
  - Scattered Heat Areas
  - Isolated Heat Sources
- NAD 1983 UTM Zone 11N

0 6,250 12,500 25,000



IRIN: Kyle Felker  
Map produced:  
9/25/2015 2356 hrs

Source: Esri, DigitalGlobe, GeoEye, Earthstar Geographics, CNES/Airbus DS, USDA, USGS, AEX, Getmapping, Aerogrid, IGN, IGP, swisstopo, and the GIS User Community

119°13'W 119°12'W 119°11'W 119°10'W 119°9'W 119°8'W 119°7'W 119°6'W 119°5'W 119°4'W 119°3'W 119°2'W 119°1'W 119°0'W 118°59'W 118°58'W 118°57'W 118°56'W 118°55'W 118°54'W 118°53'W 118°52'W 118°51'W 118°50'W 118°49'W 118°48'W 118°47'W 118°46'W 118°45'W 118°44'W 118°43'W 118°42'W 118°41'W 118°40'W 118°39'W 118°38'W 118°37'W 118°36'W 118°35'W 118°34'W 118°33'W