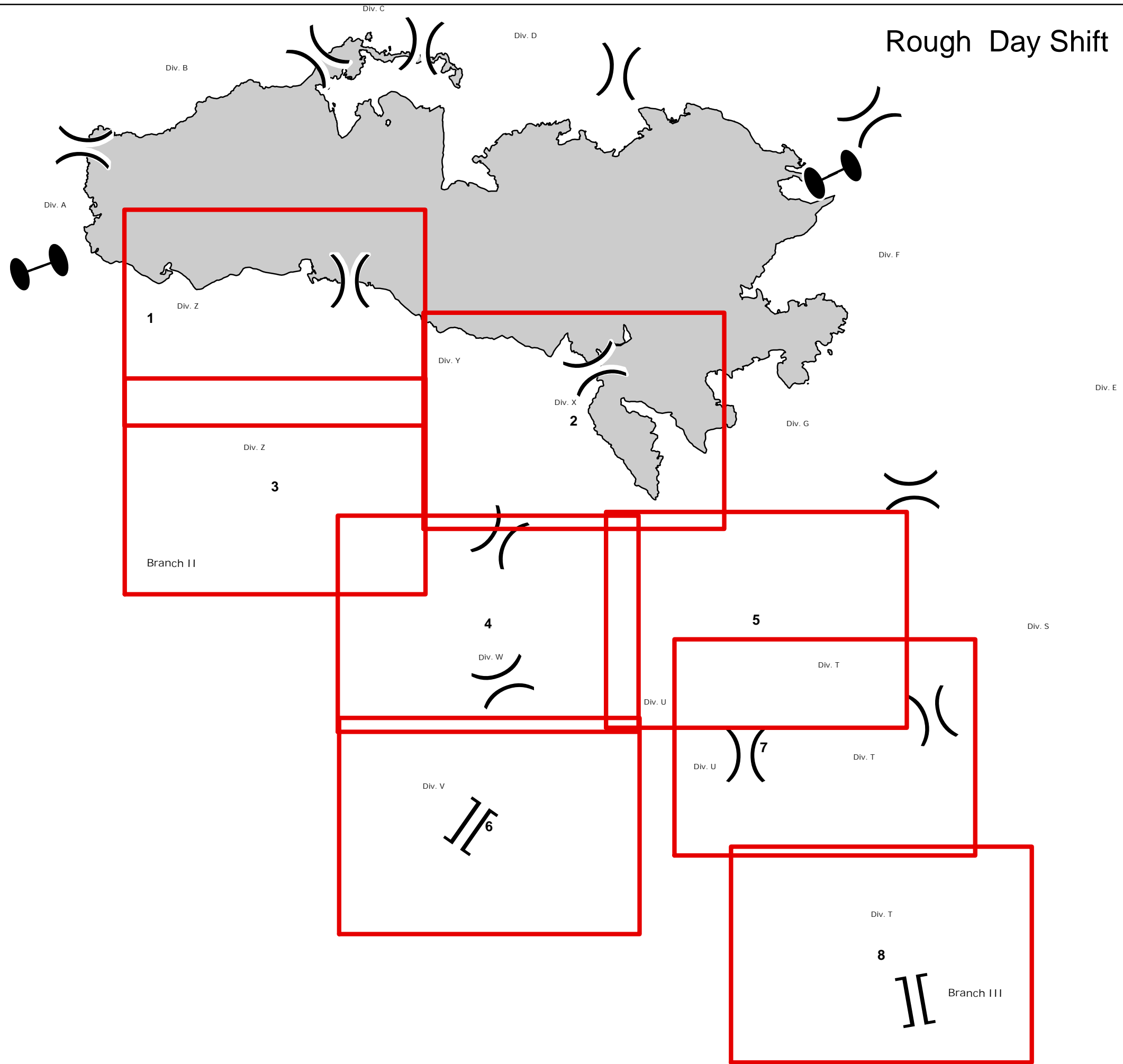
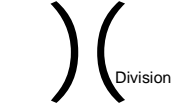


Rough Day Shift August 21, 2015



Legend



Uncontrolled Fire Edge

Completed Dozer Line

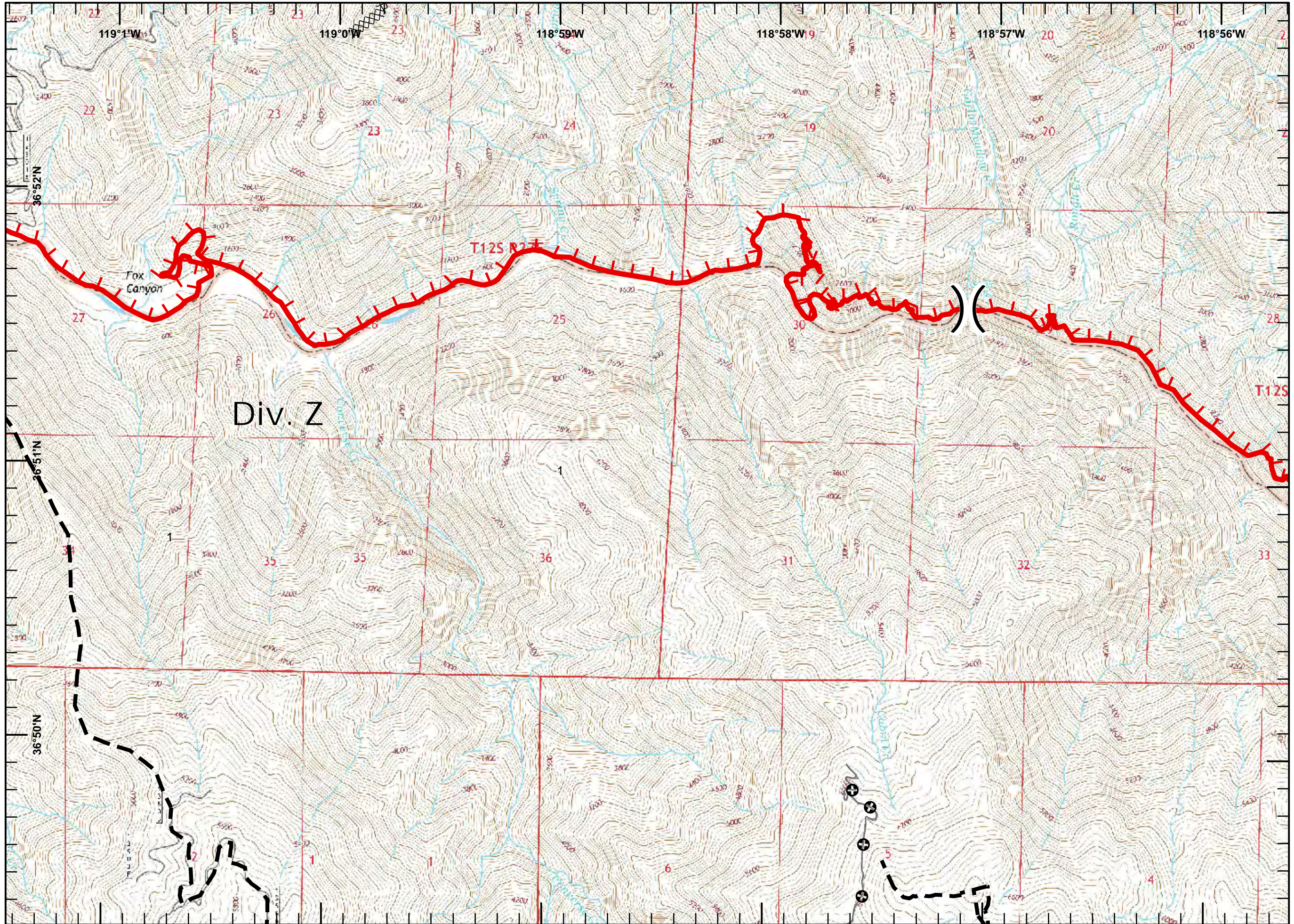
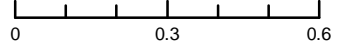
Planned Fire Line

Other

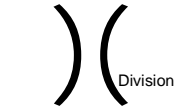


1:24,000

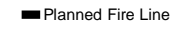
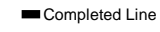
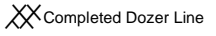
Miles



Legend

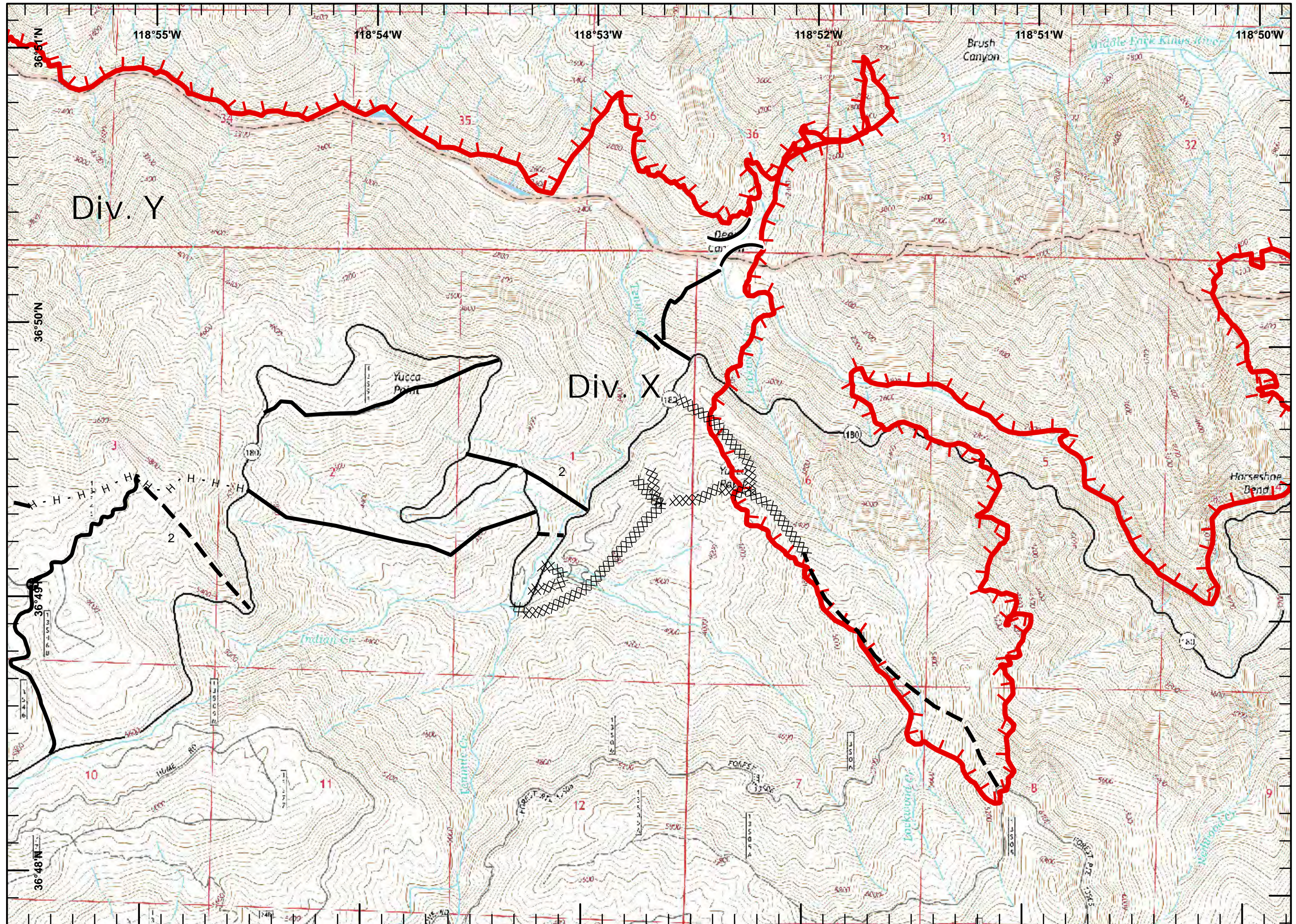
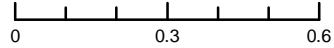


Division



1:24,000

Miles



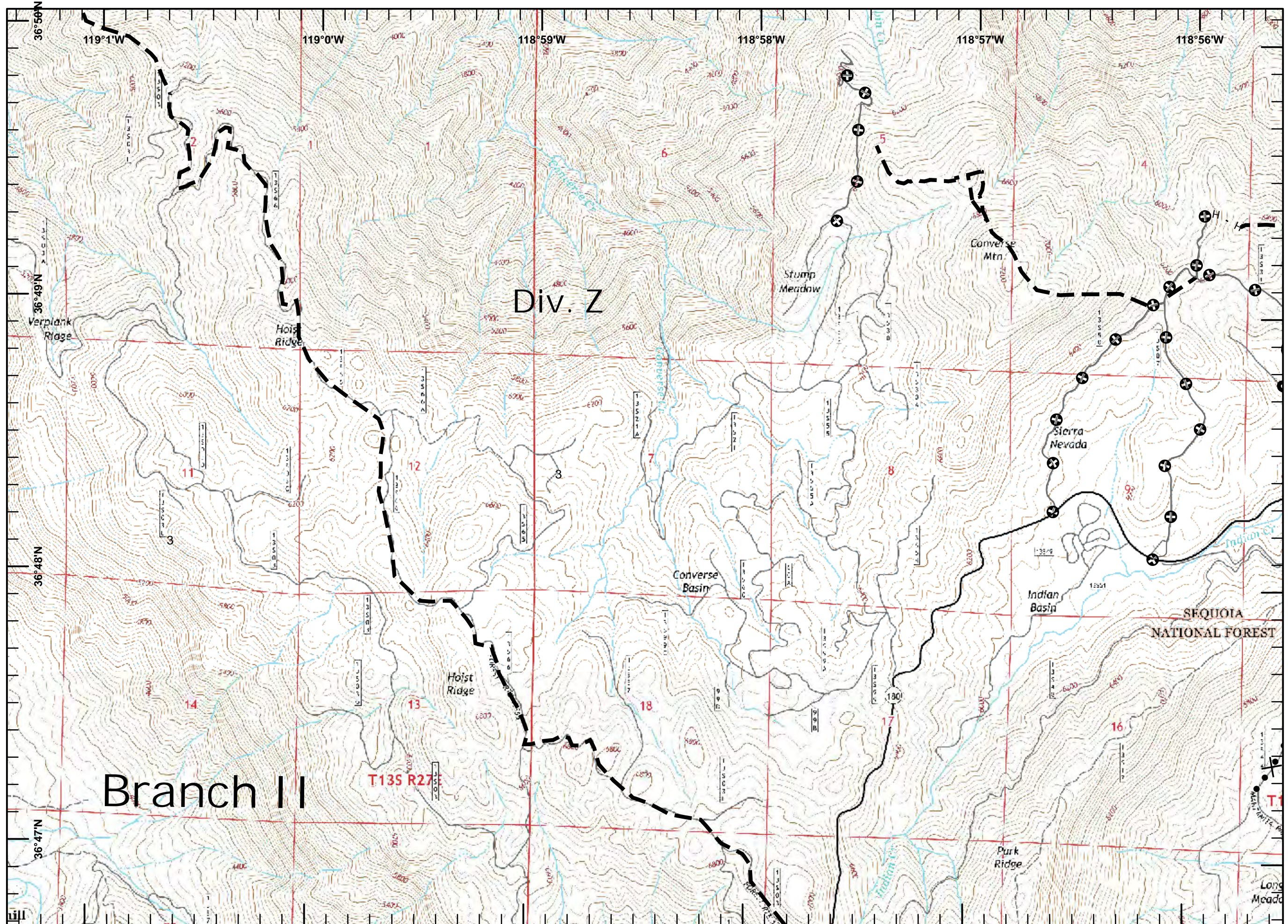
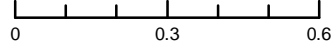
Legend

- Completed Line
- H Hand Line
- Planned Fire Line
- Proposed Dozer Line
- Other

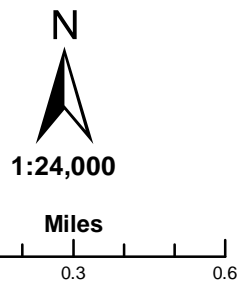
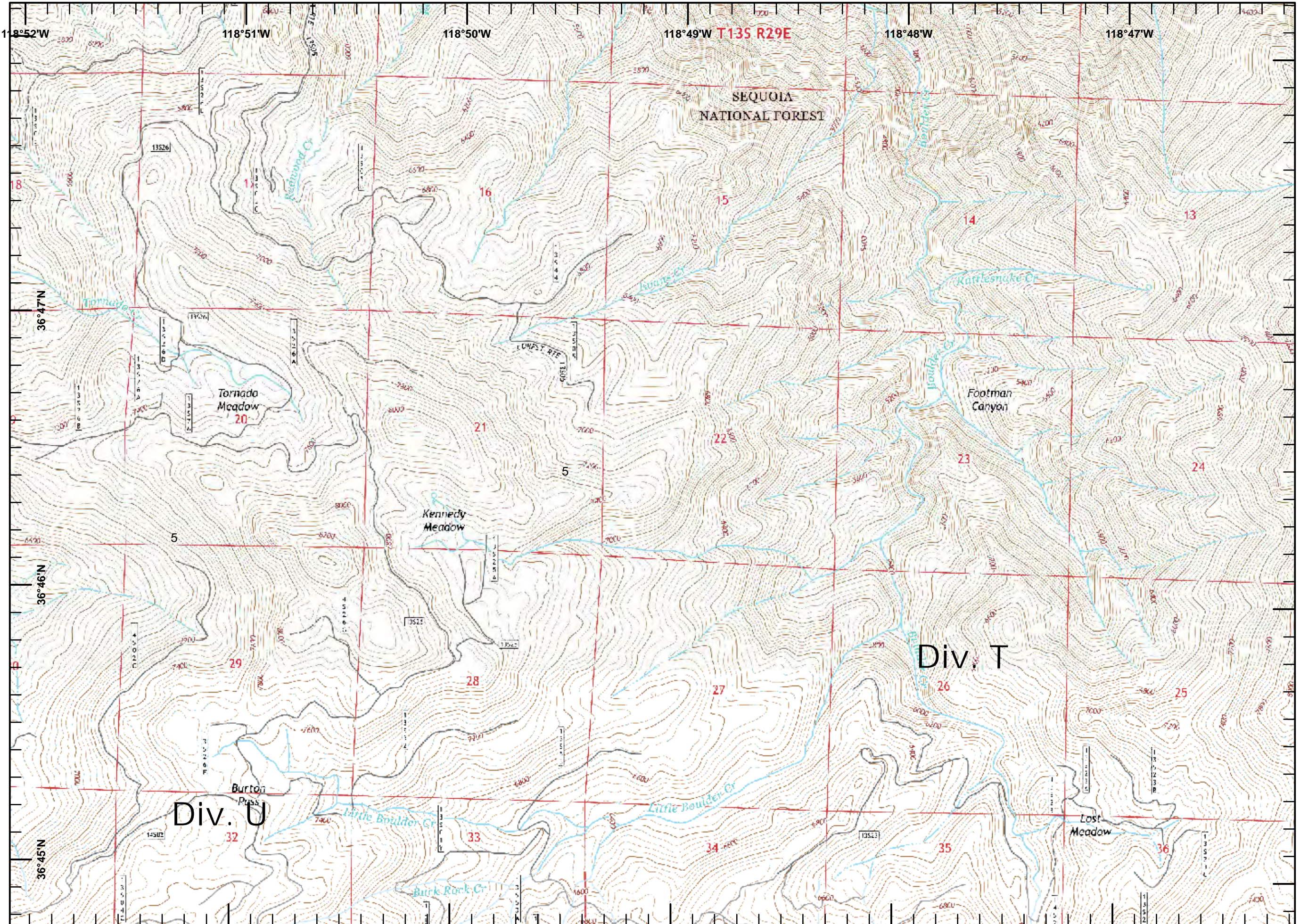


1:24,000

Miles



Legend

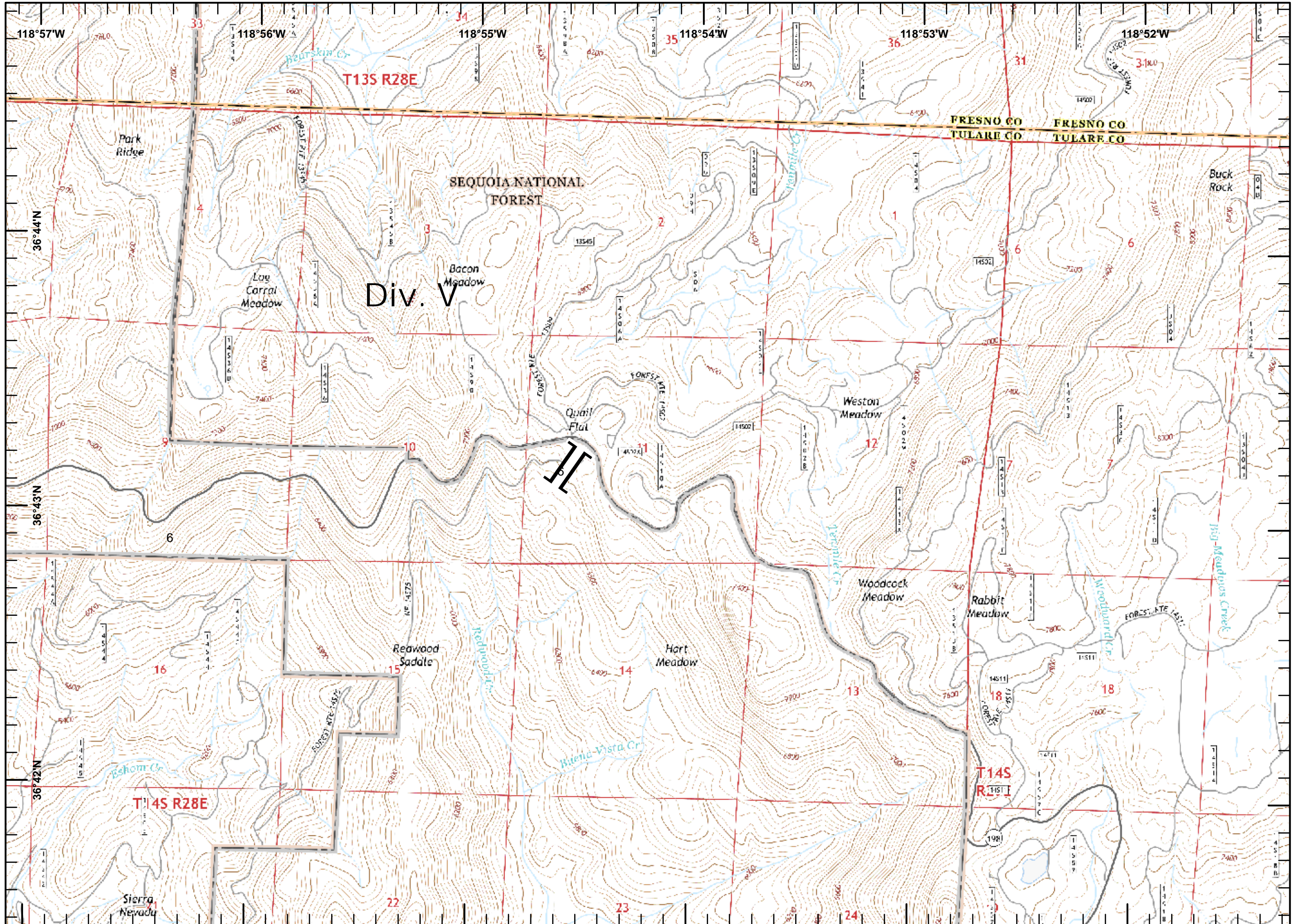
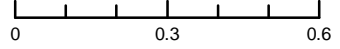


Legend
[[Branch

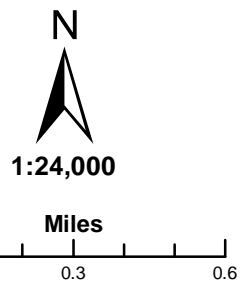
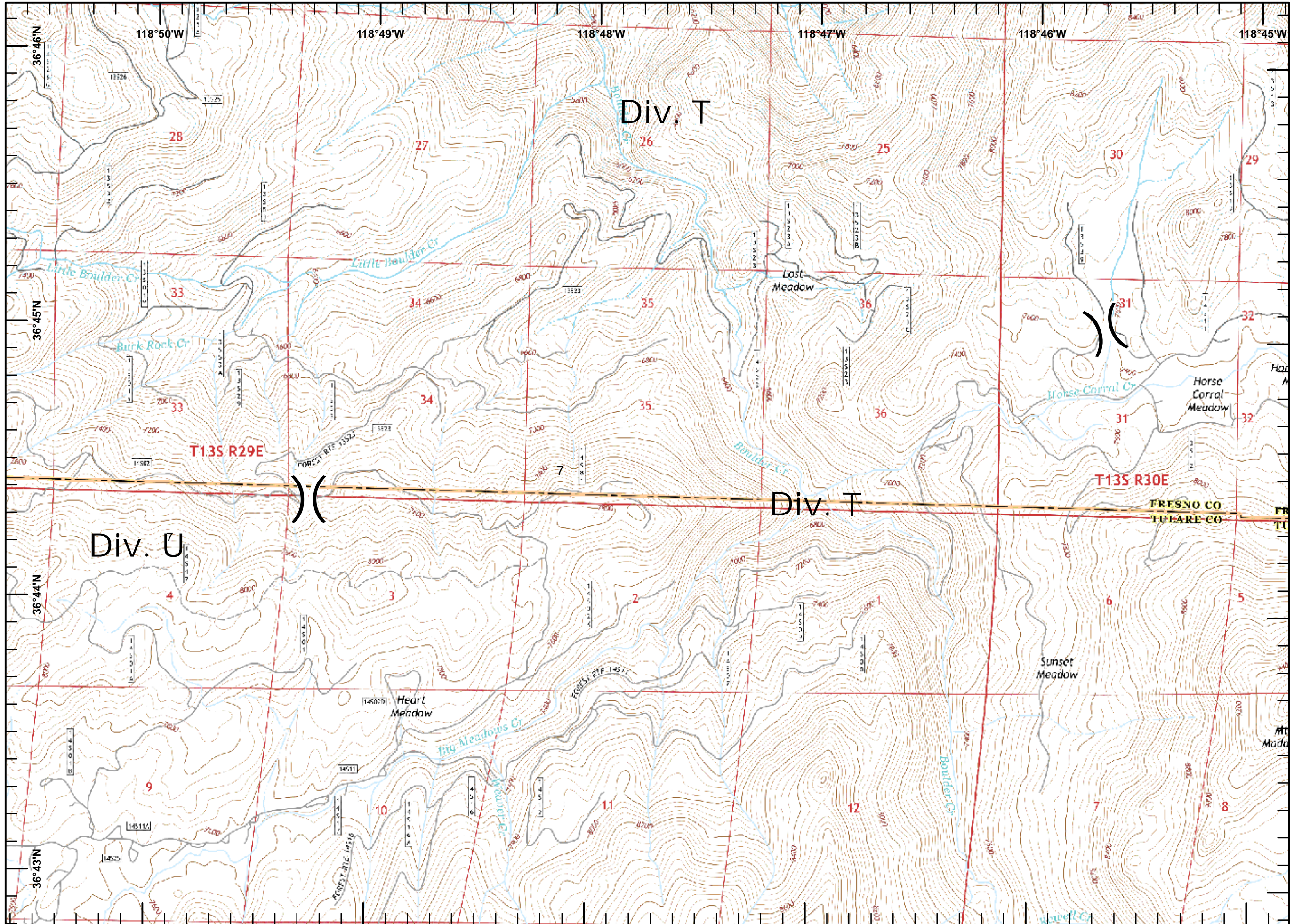
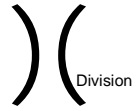


1:24,000

Miles



Legend



Legend

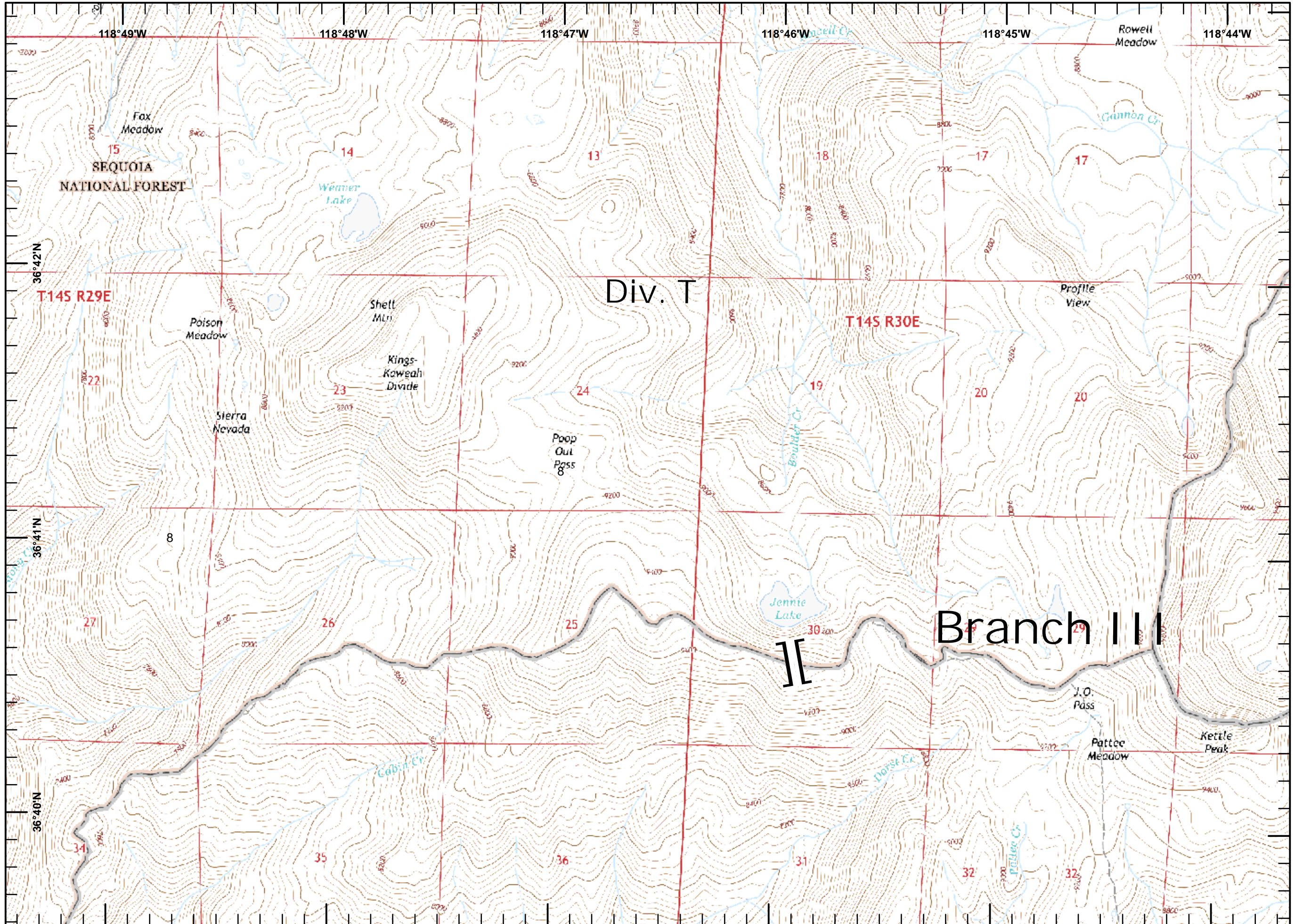
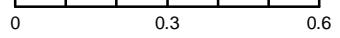


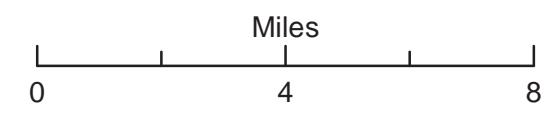
Branch



1:24,000

Miles





Rough Incident CA-SNF-001746

Transportation Map



DSD 8/18/2015

Legend

- Rough_Lakes
- GarlicMdw
- HsVicinityRds
- RoughMjrStrm
- KingsCayonNP
- Sierra_SequoiaForestBoundary
- ⊗ Rough Incident Point of Origin
- ⊕ Turn Intersection
- ⊙ Spike Camp
-) Division Break
- | Branch Break

To Rough ICP: From Prather District Office travel 17 miles east on State Route 168 to Shaver Lake. Turn right on Dinkey Creek Road and travel east 10 miles to Dinkey Mill Work Center Camp.

Dinkey Mill Work Center Camp to Rough Incident: Travel east 1 mile on Dinkey Creek Road to Mckinley Grove Road. Turn right on McKinley Grove Road and travel 20 miles east to Forest Road 11S07. Travel 5-10 miles south on 11S07 to Division C of Rough Incident.

