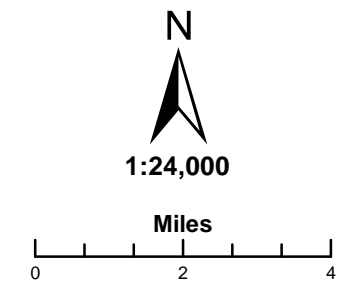
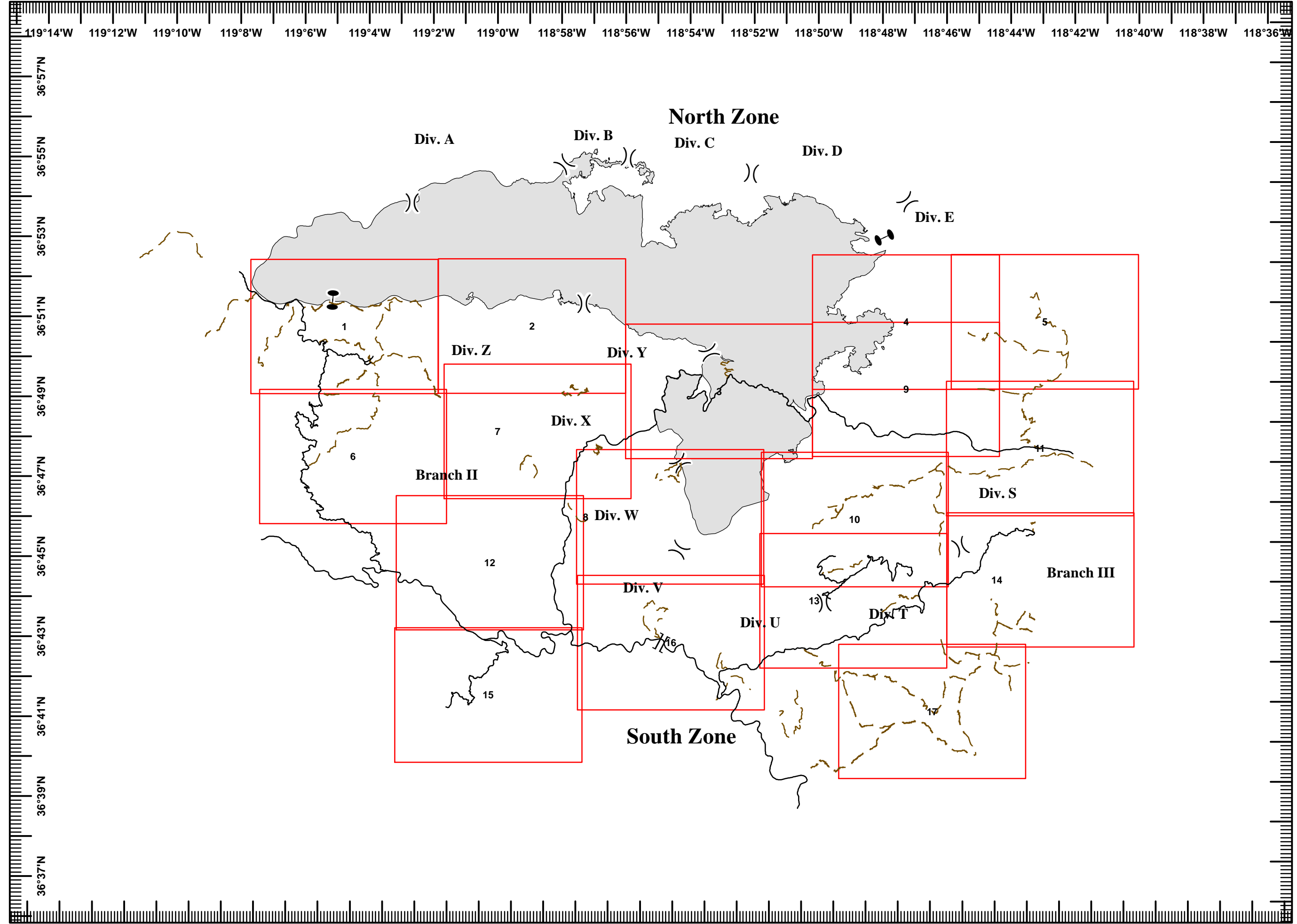
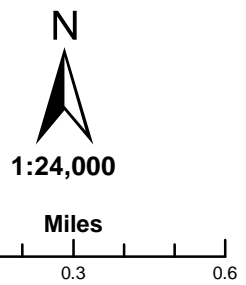


Rough Fire  
CA-SNF-001746  
NAD83 Datum  
August 22, 2015

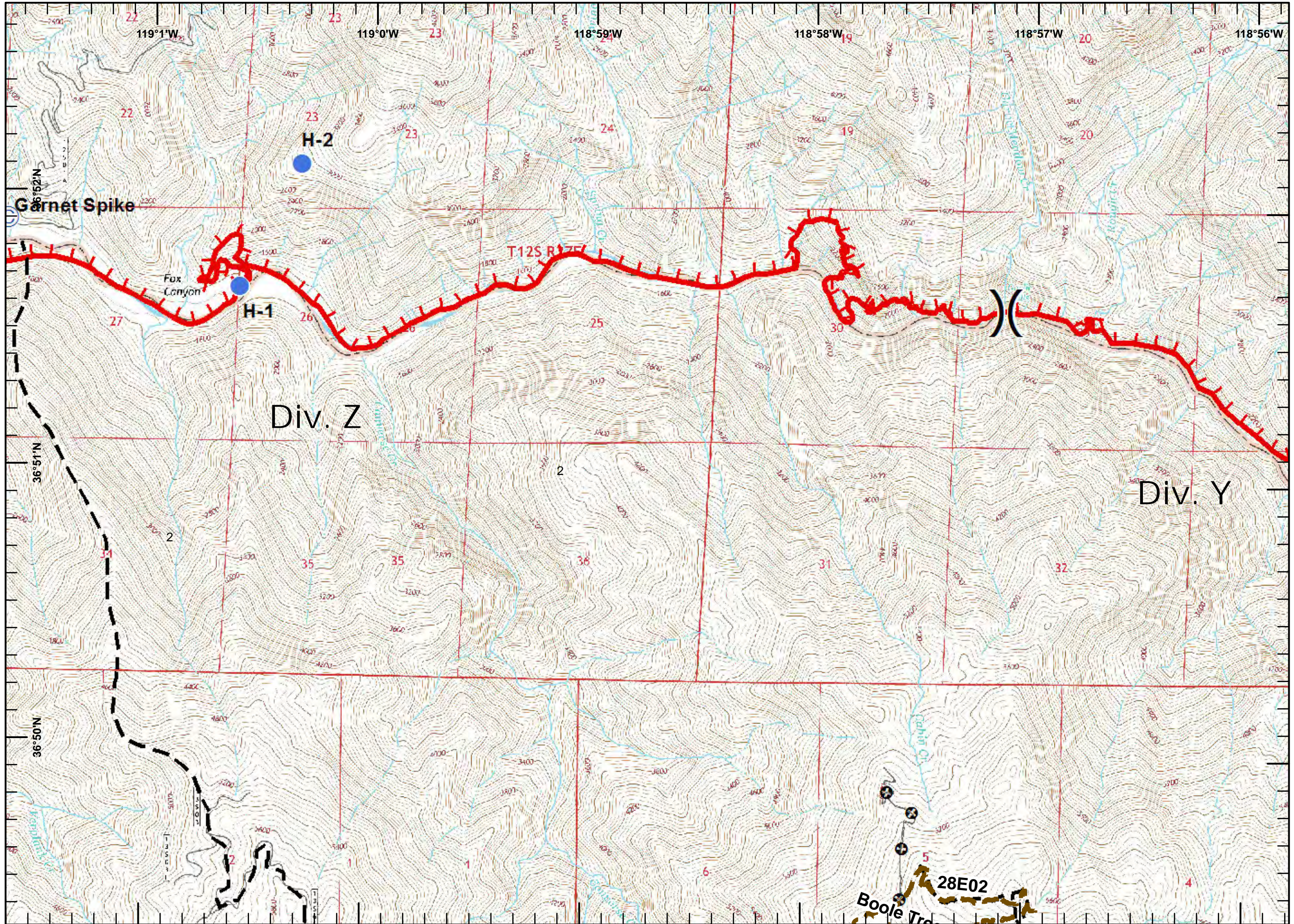
**Legend**  
— Road  
— Trail  
□ IAP\_Grid\_Index\_08212015



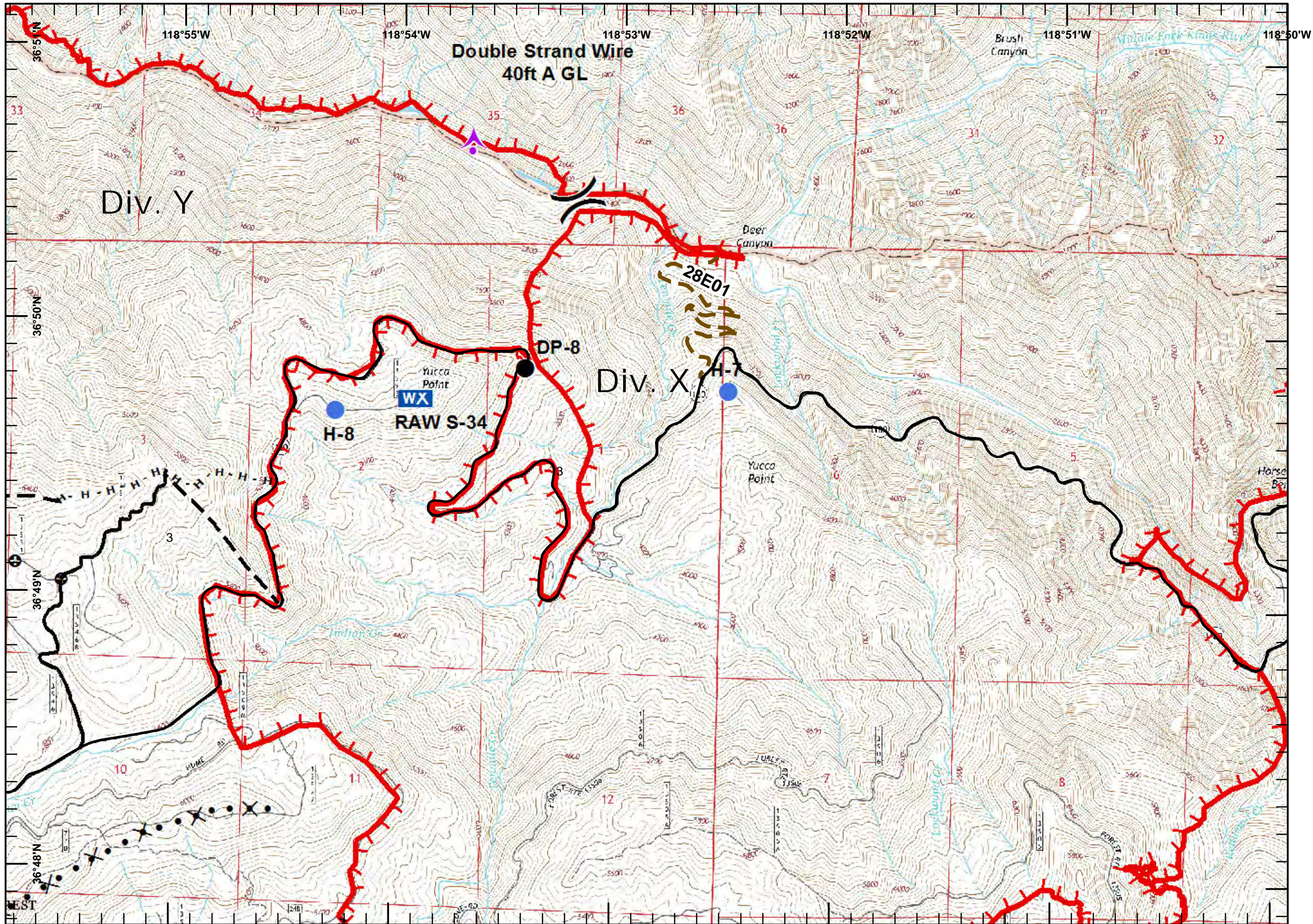
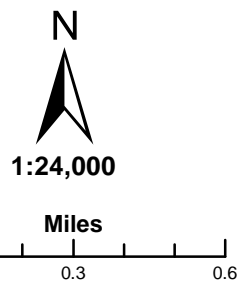
Legend  
— Road



Legend

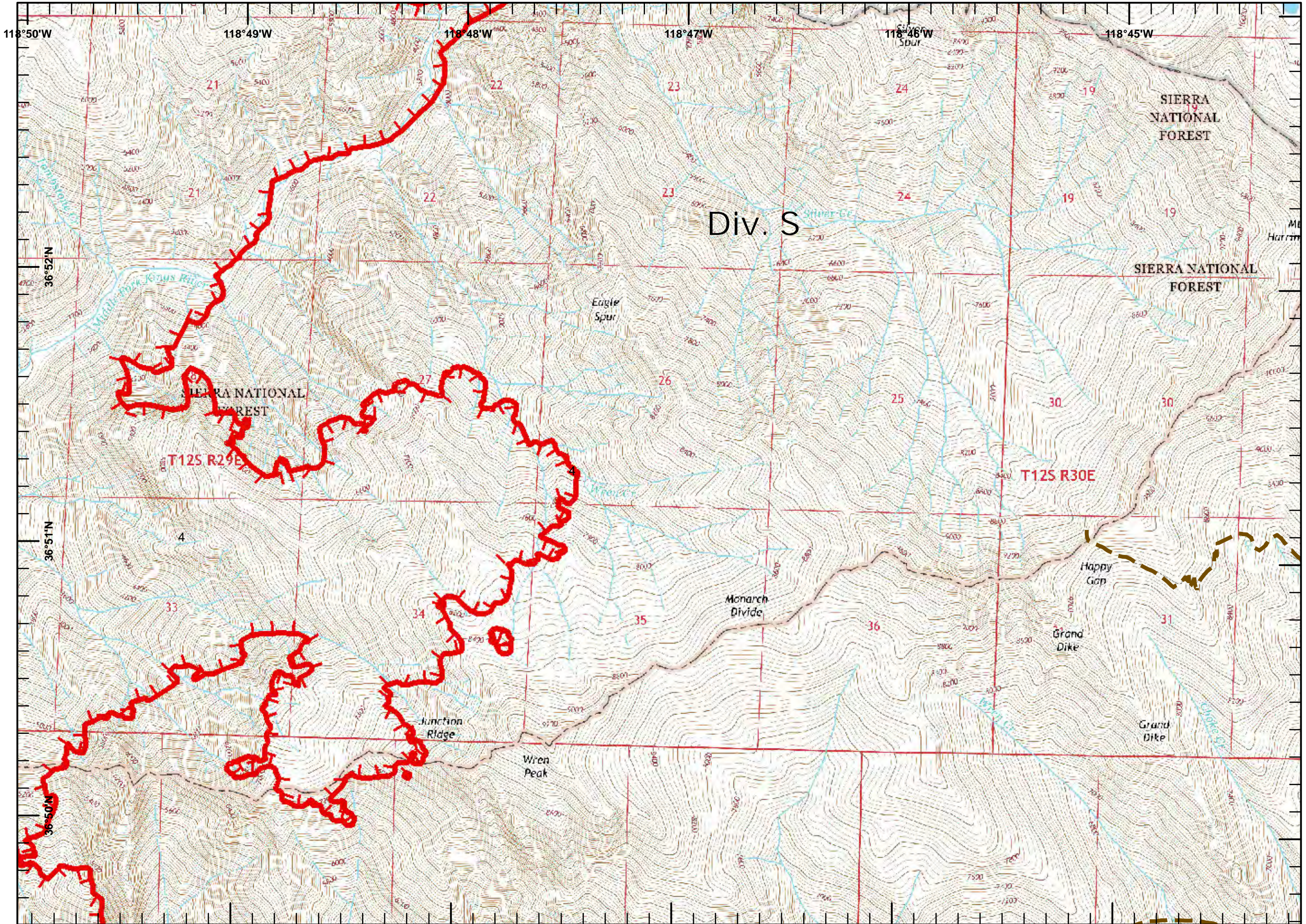


Legend  
— Road



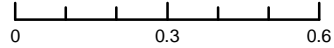
Legend

- Trail
- Uncontrolled Fire Edge



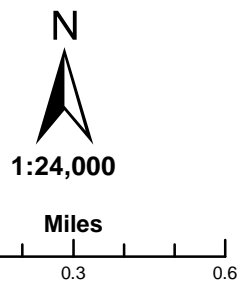
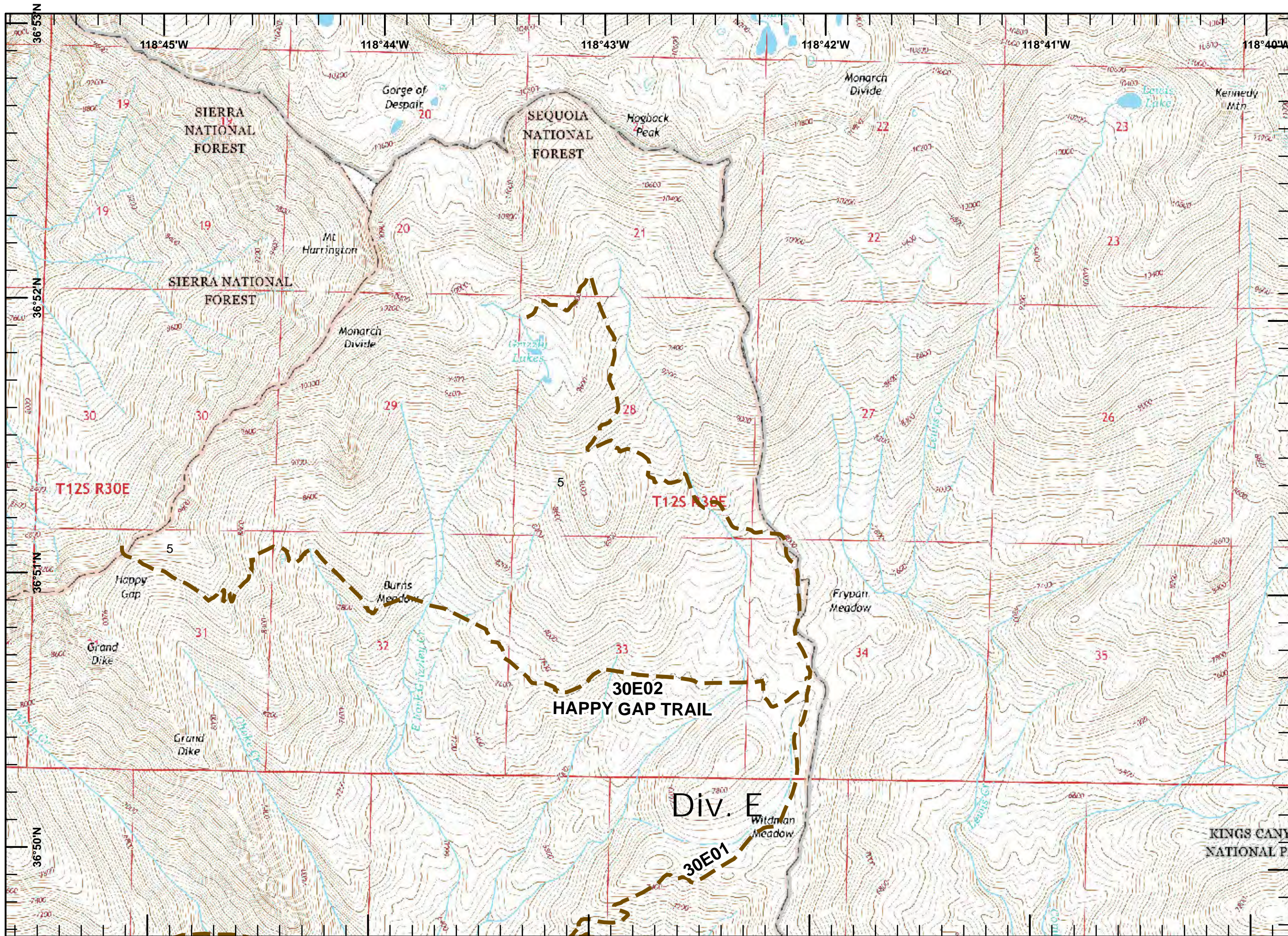
1:24,000

Miles

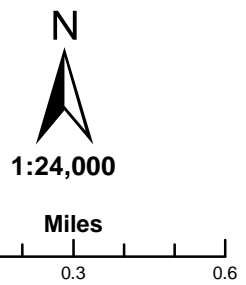
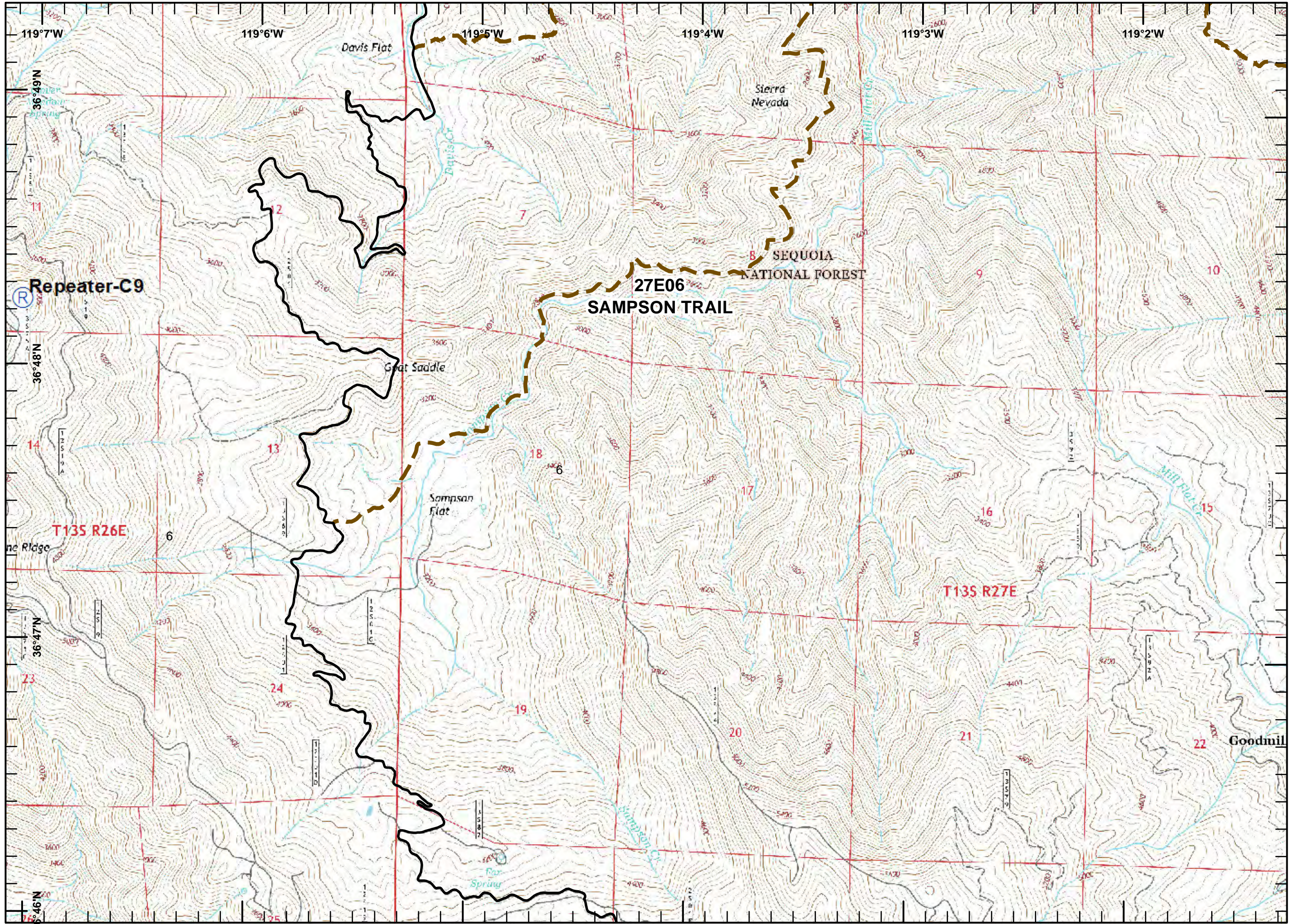


Legend

Trail



**Legend**  
— Road  
— Trail  
Ⓡ Repeater

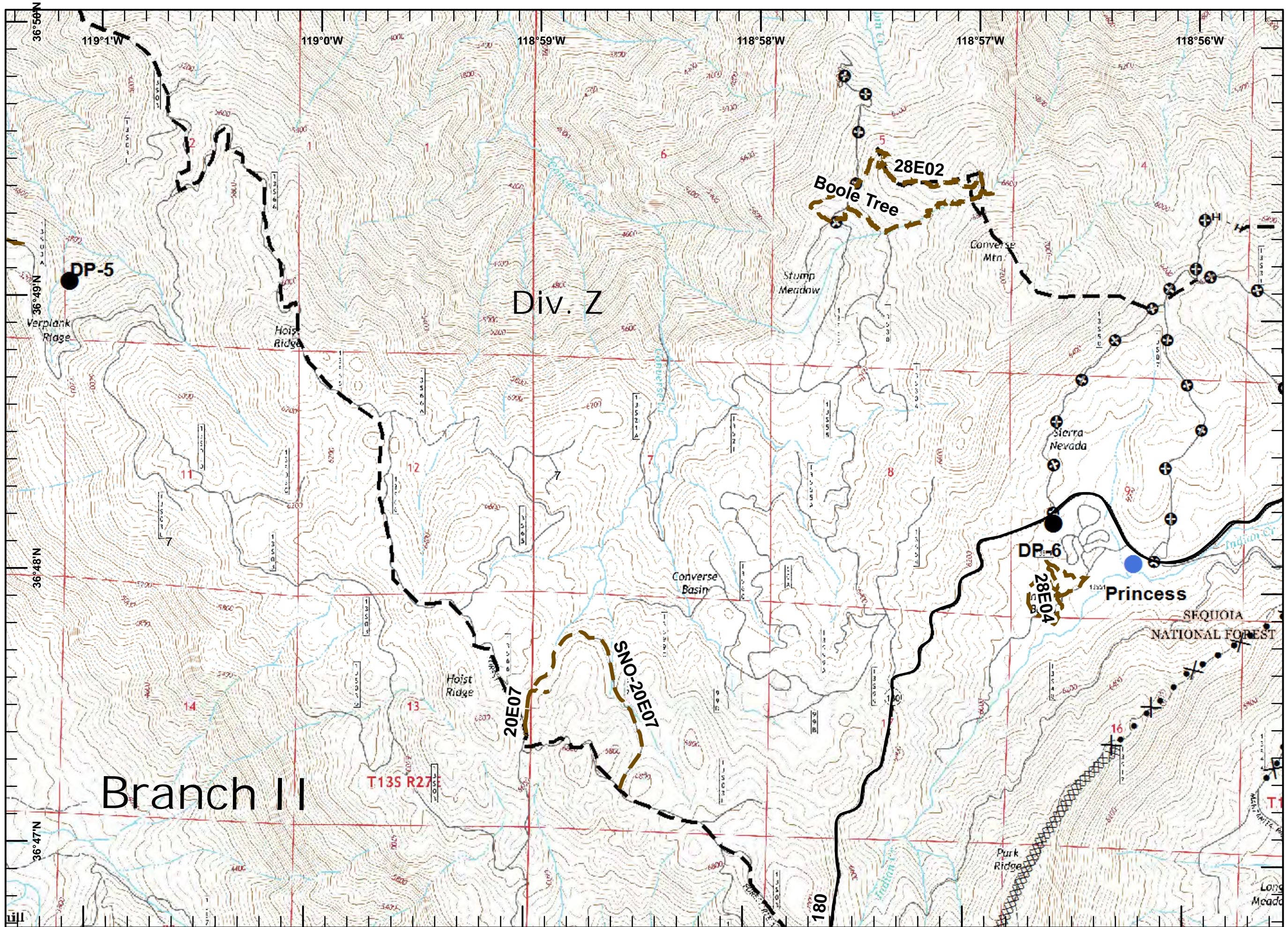
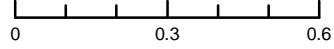


Legend  
— Road



1:24,000

Miles



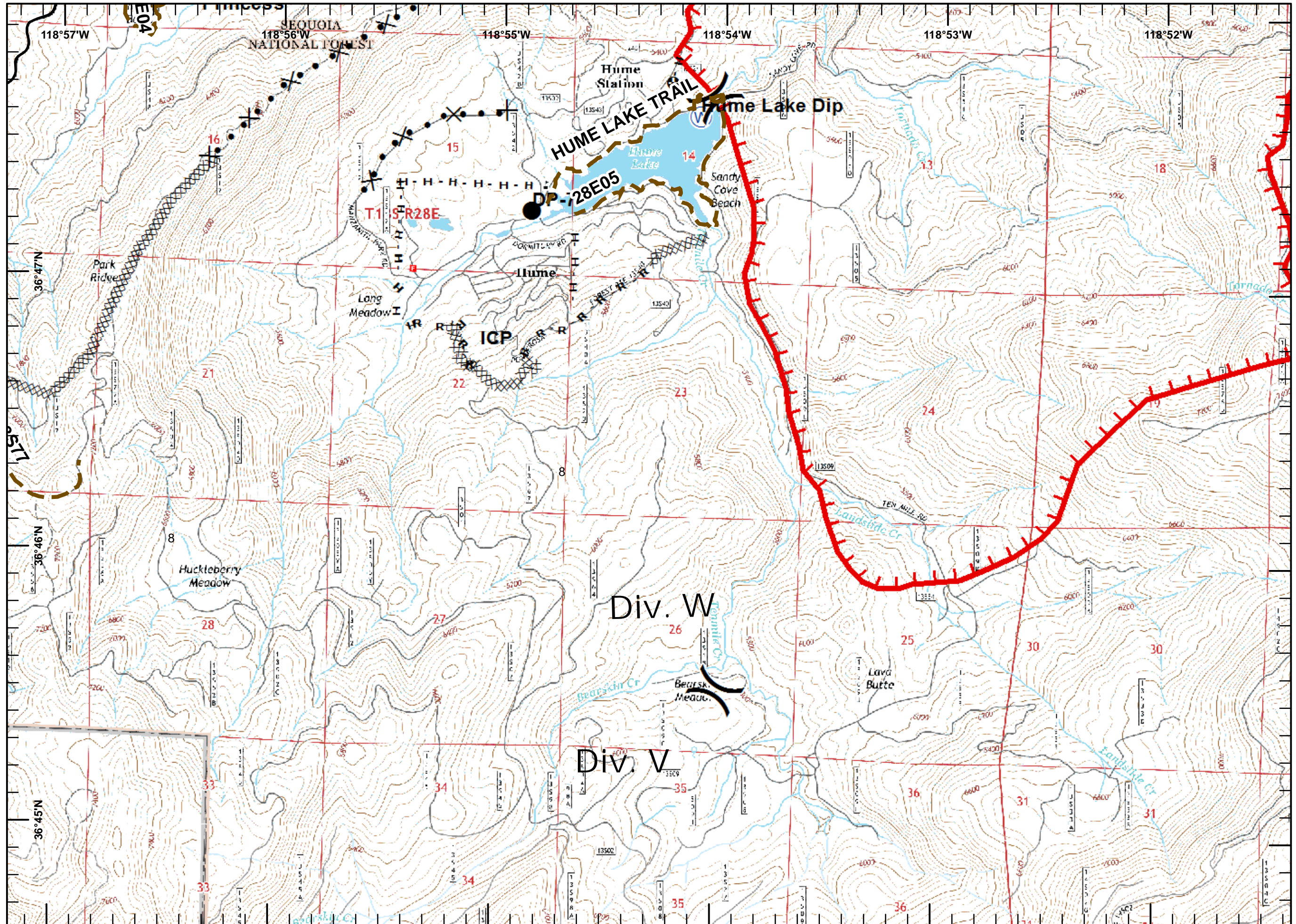
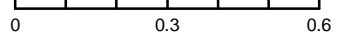


Legend  
— Road



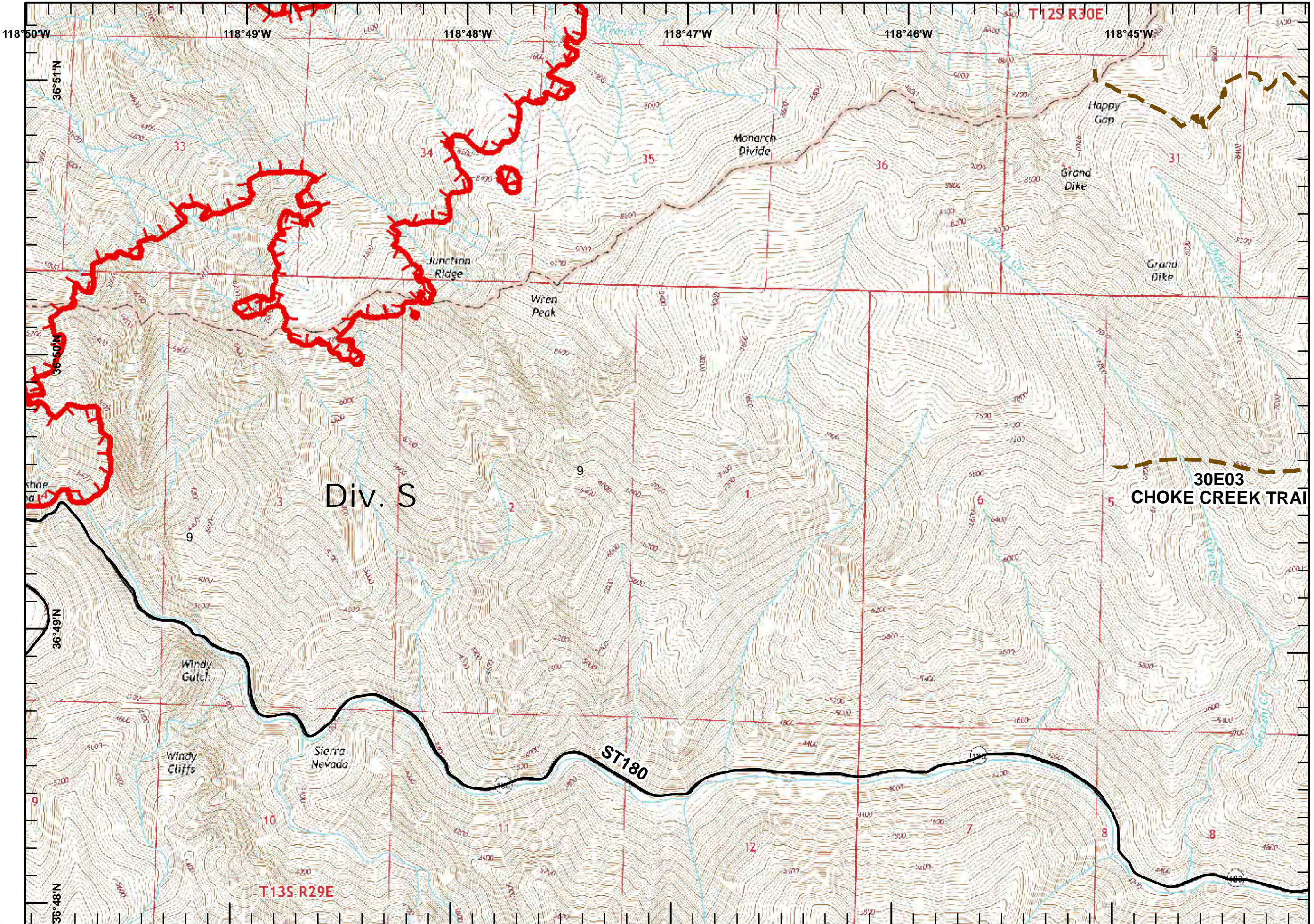
1:24,000

Miles



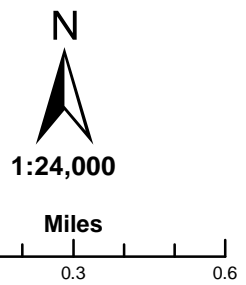
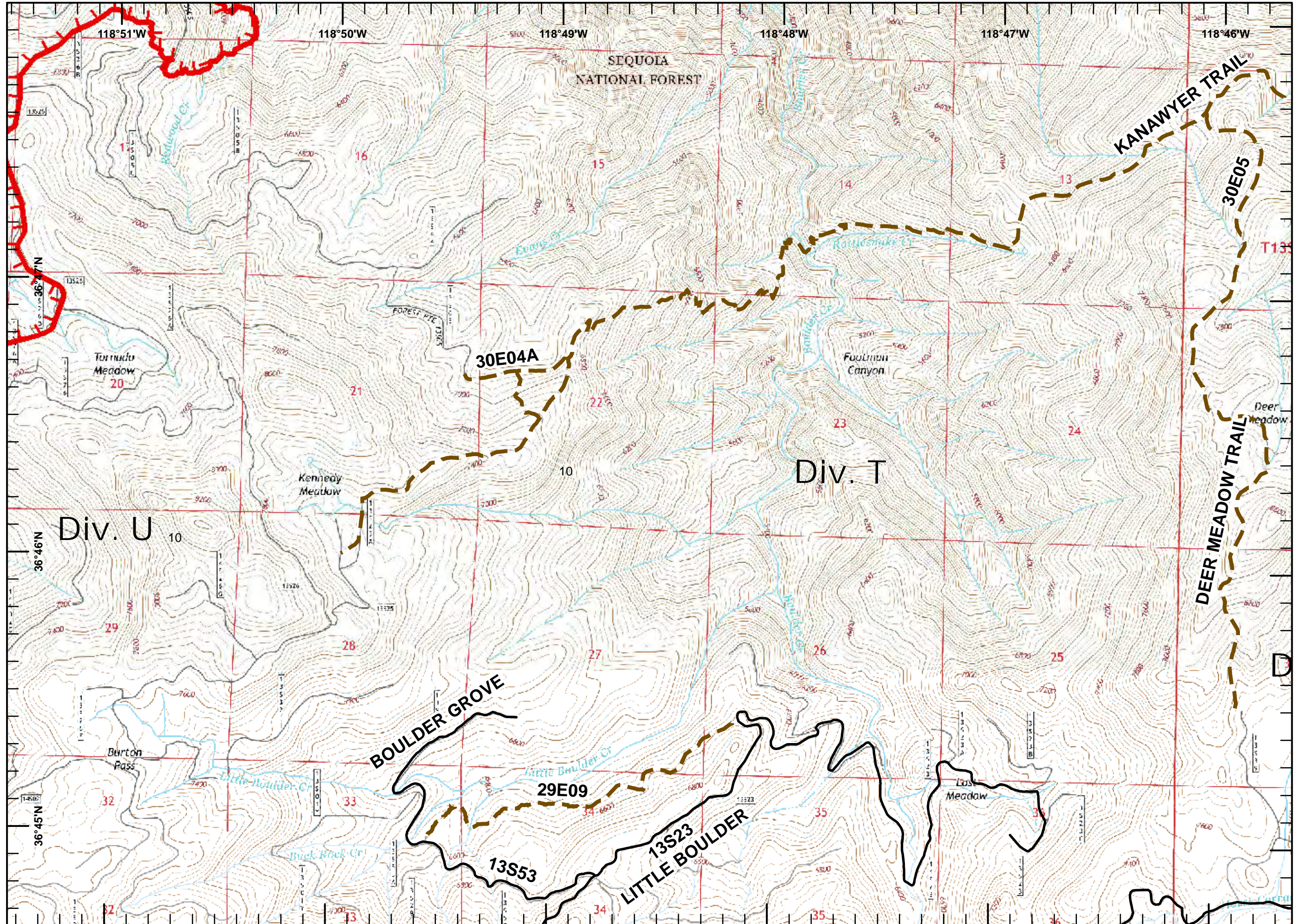
Legend

- Road
- Trail
- Uncontrolled Fire Edge



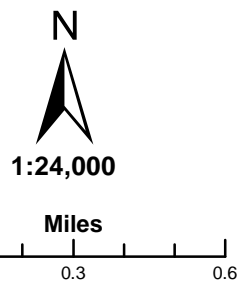
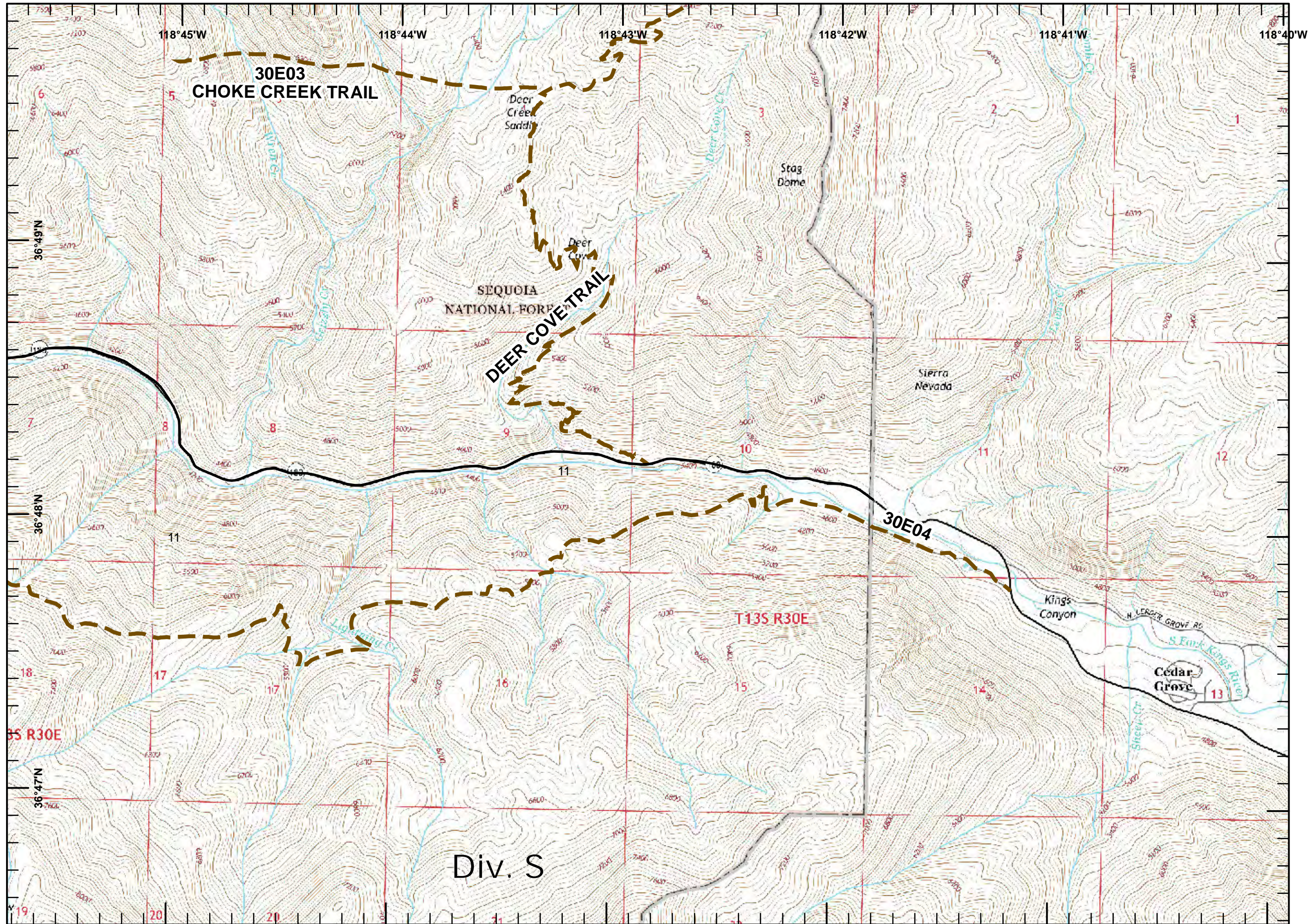
Legend

- Road
- Trail
- Uncontrolled Fire Edge



Legend

- Road
- - - Trail

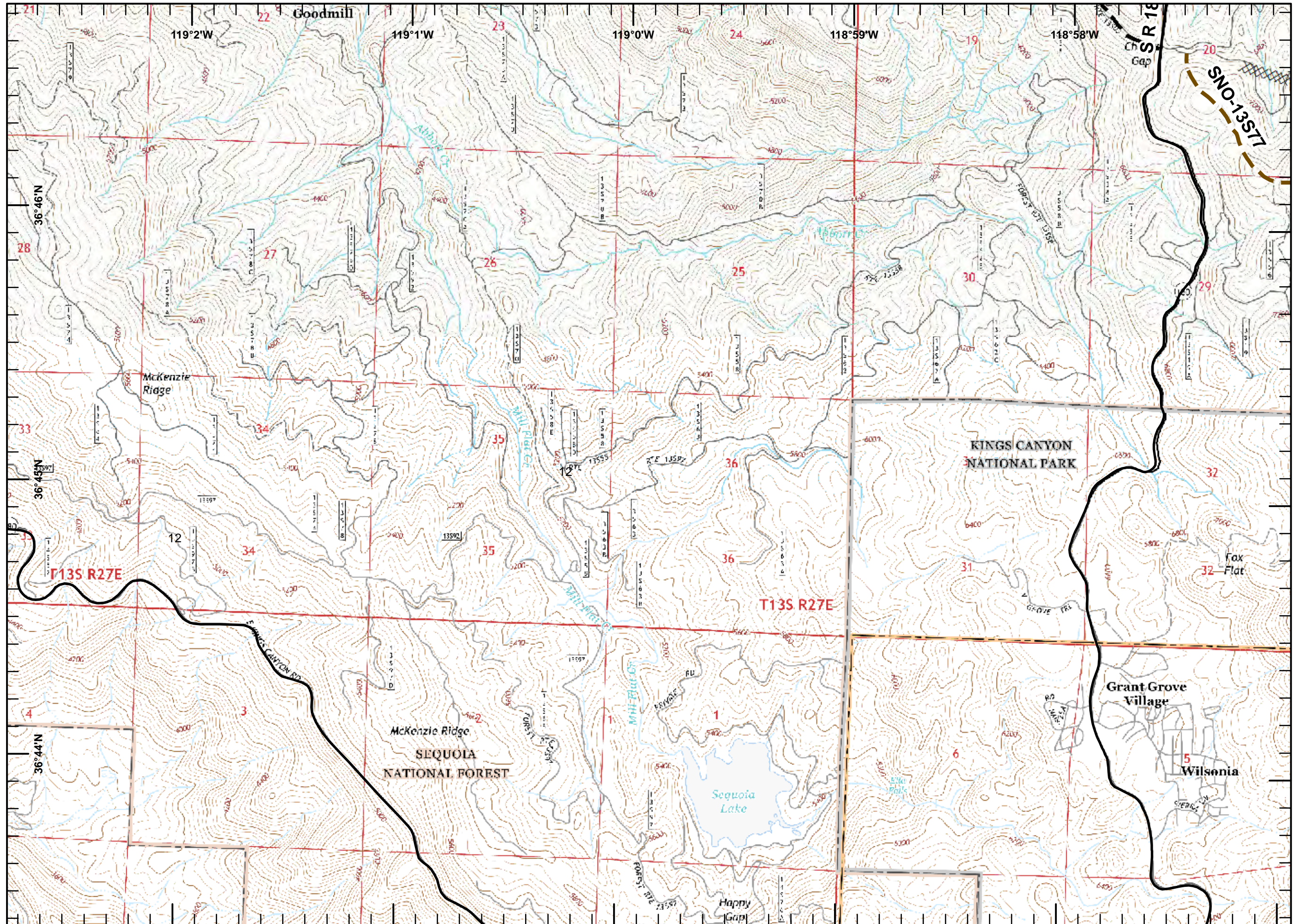
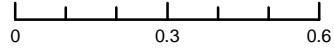


Legend  
— Road



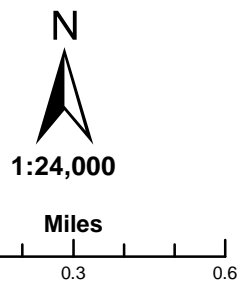
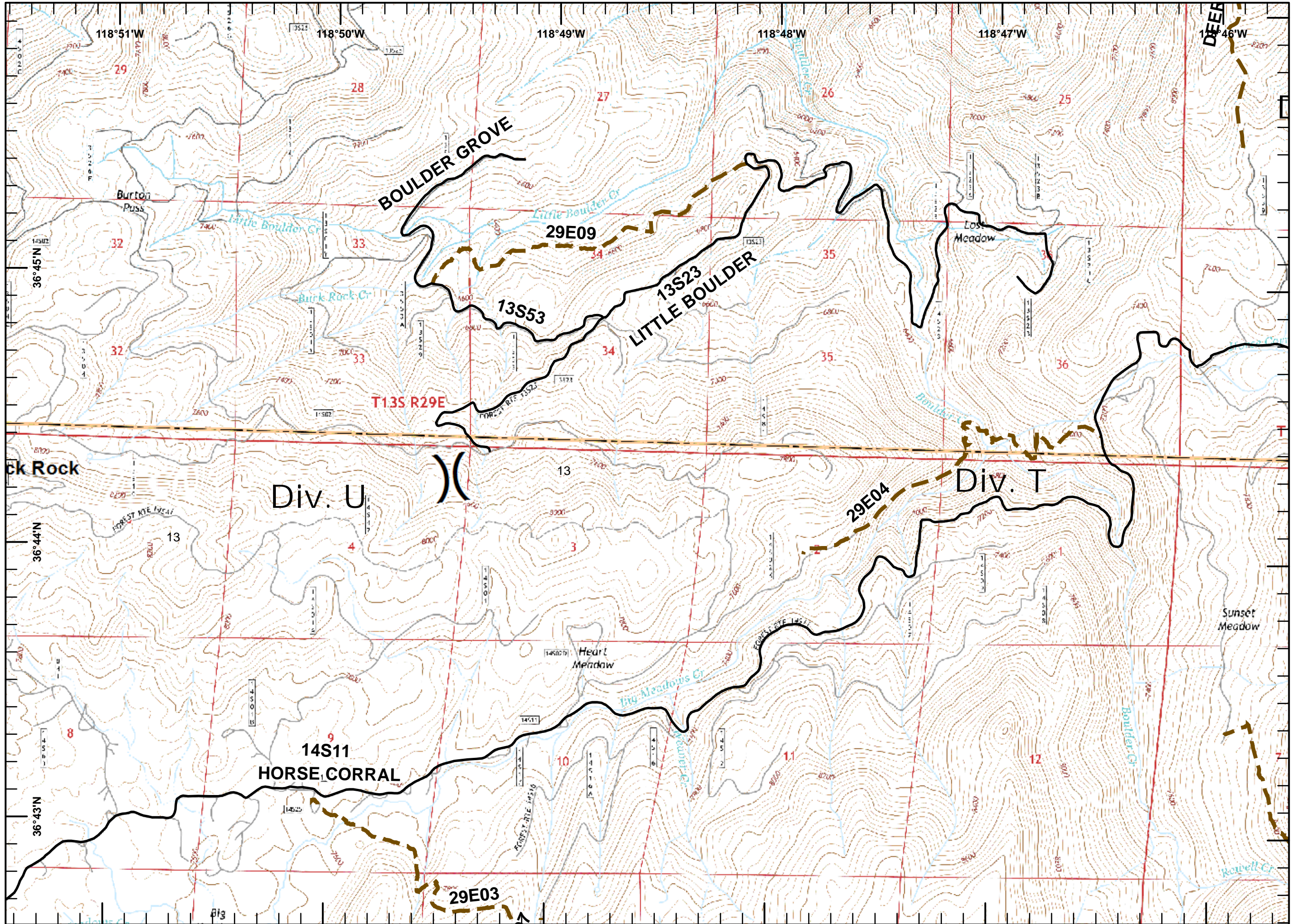
1:24,000

Miles



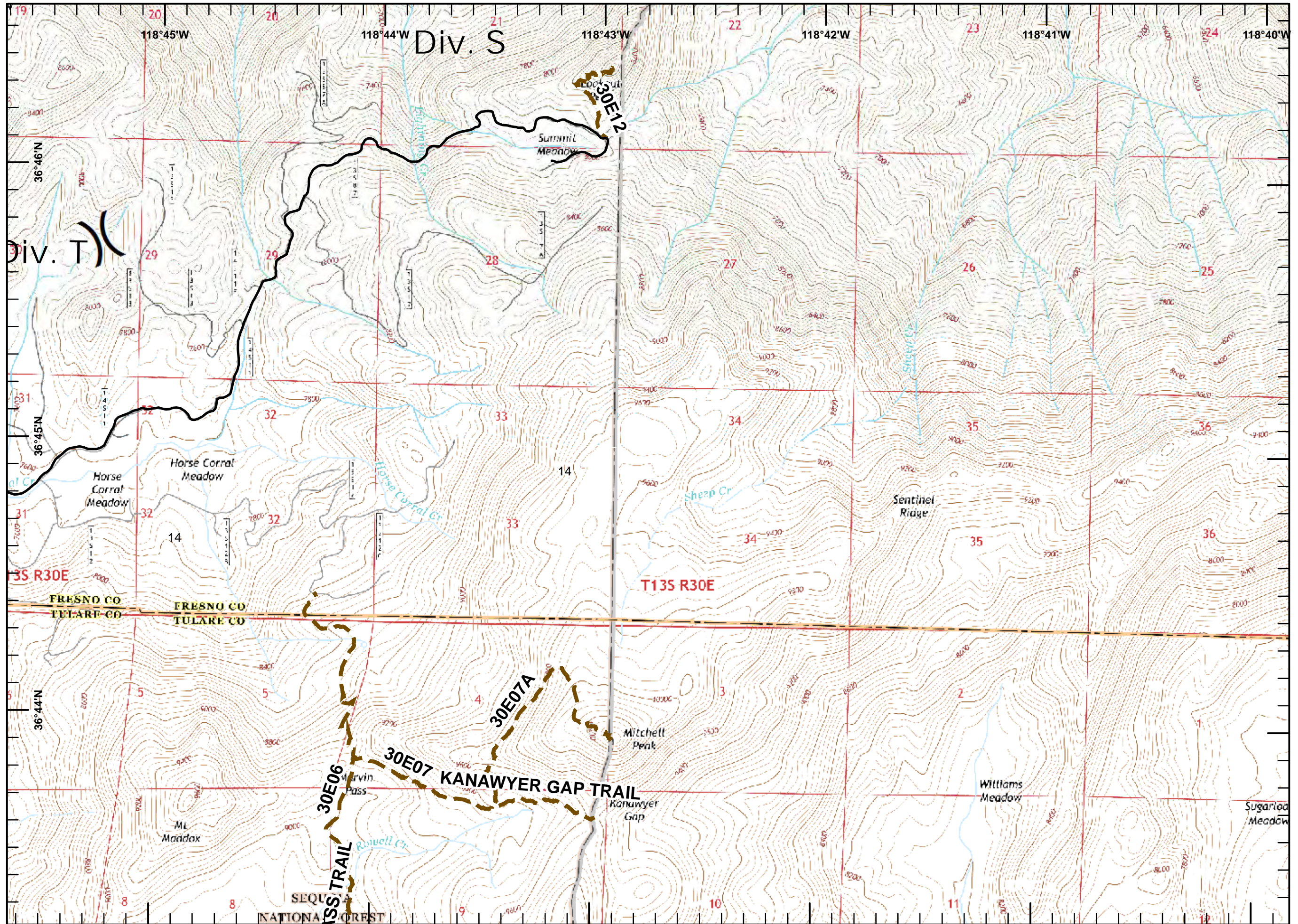
Legend

- Road
- - - Trail

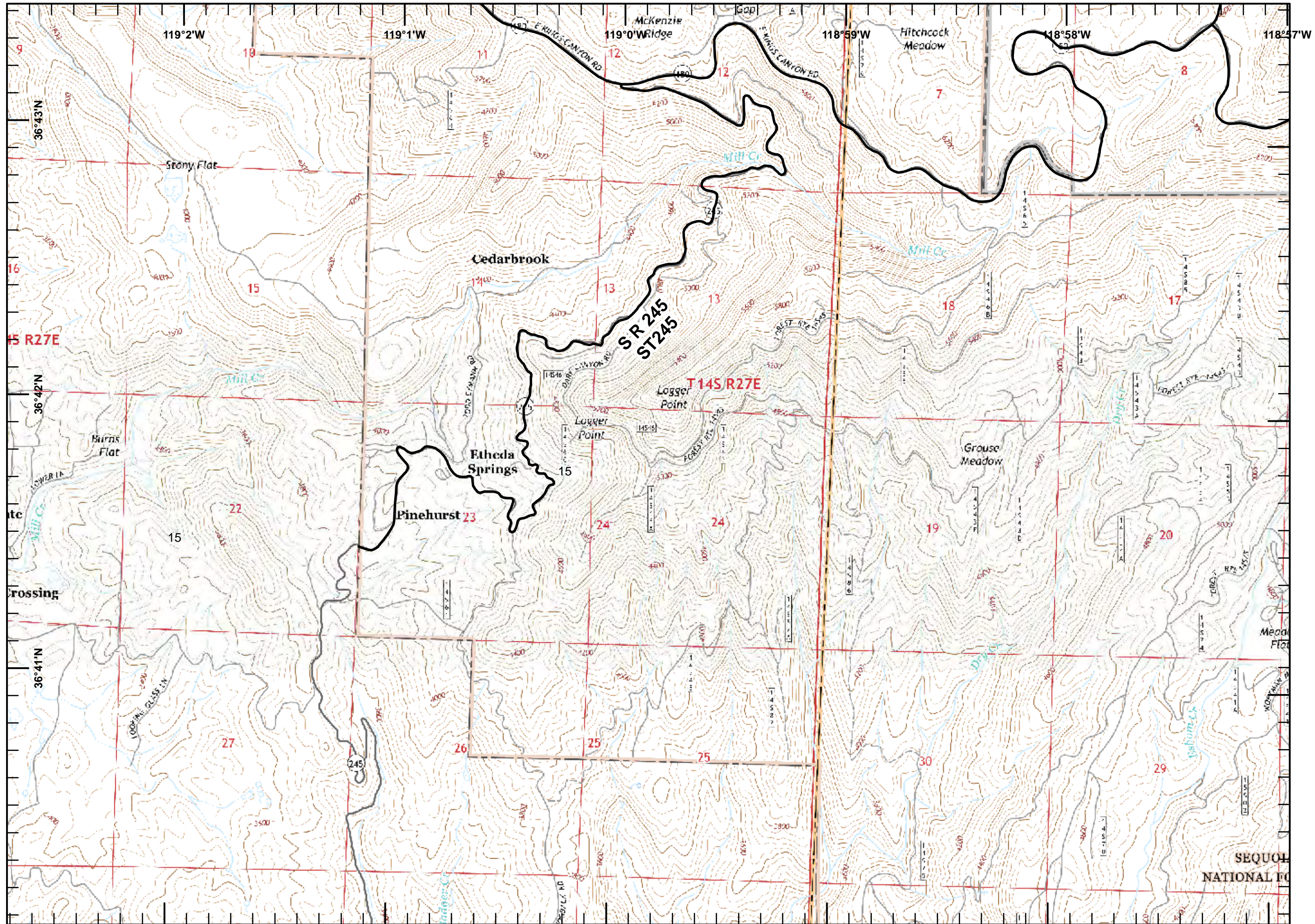
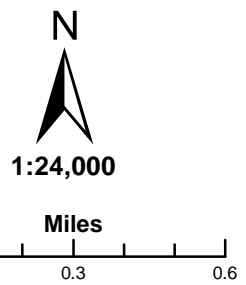


Legend

- Road
- Trail



Legend  
— Road



SEQUOIA NATIONAL FOREST



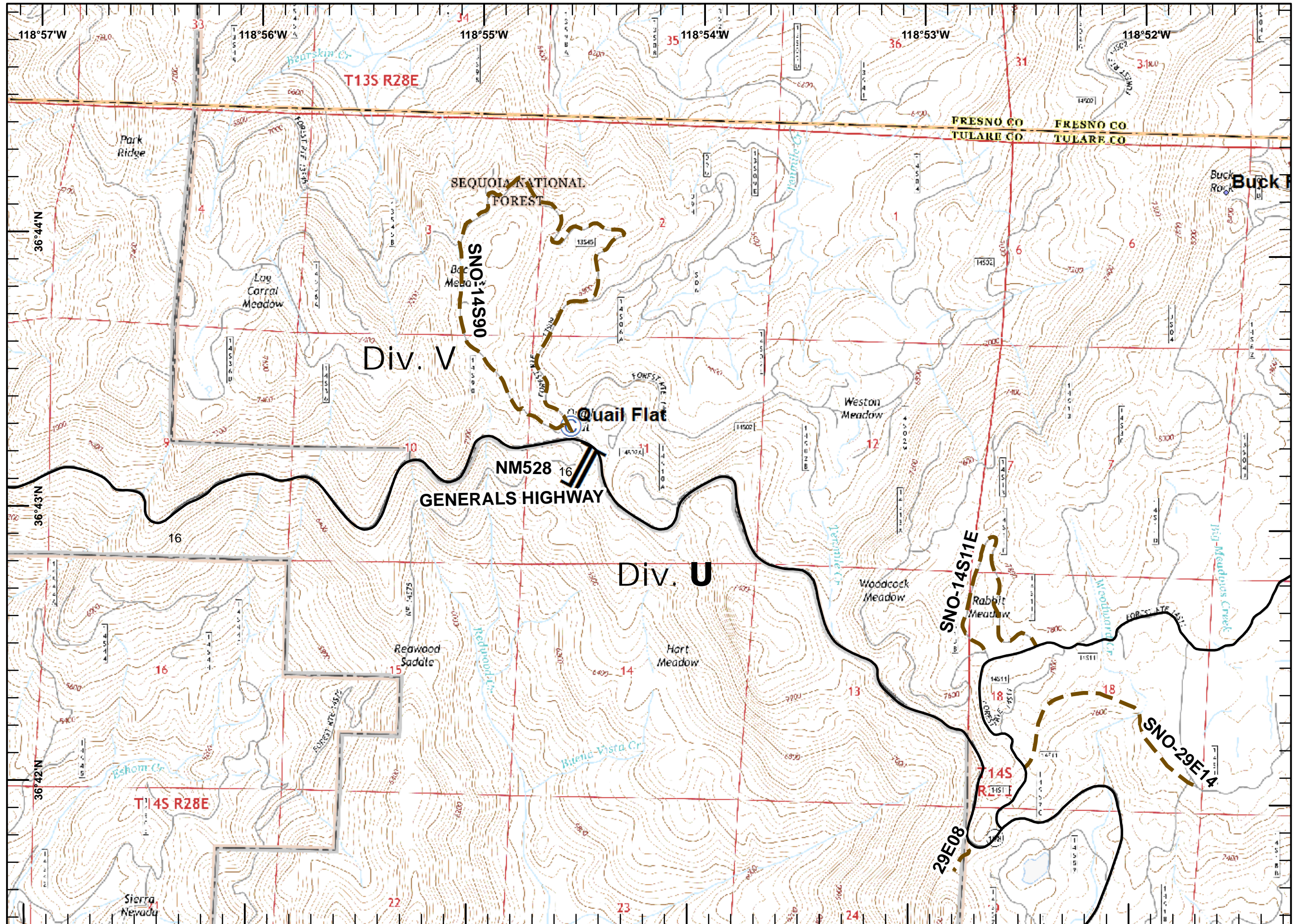
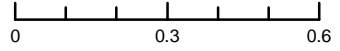
Legend

- Road
- Trail
- Camp
- Other



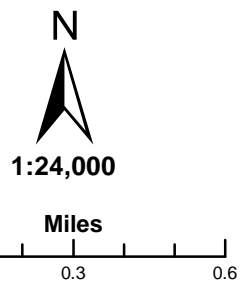
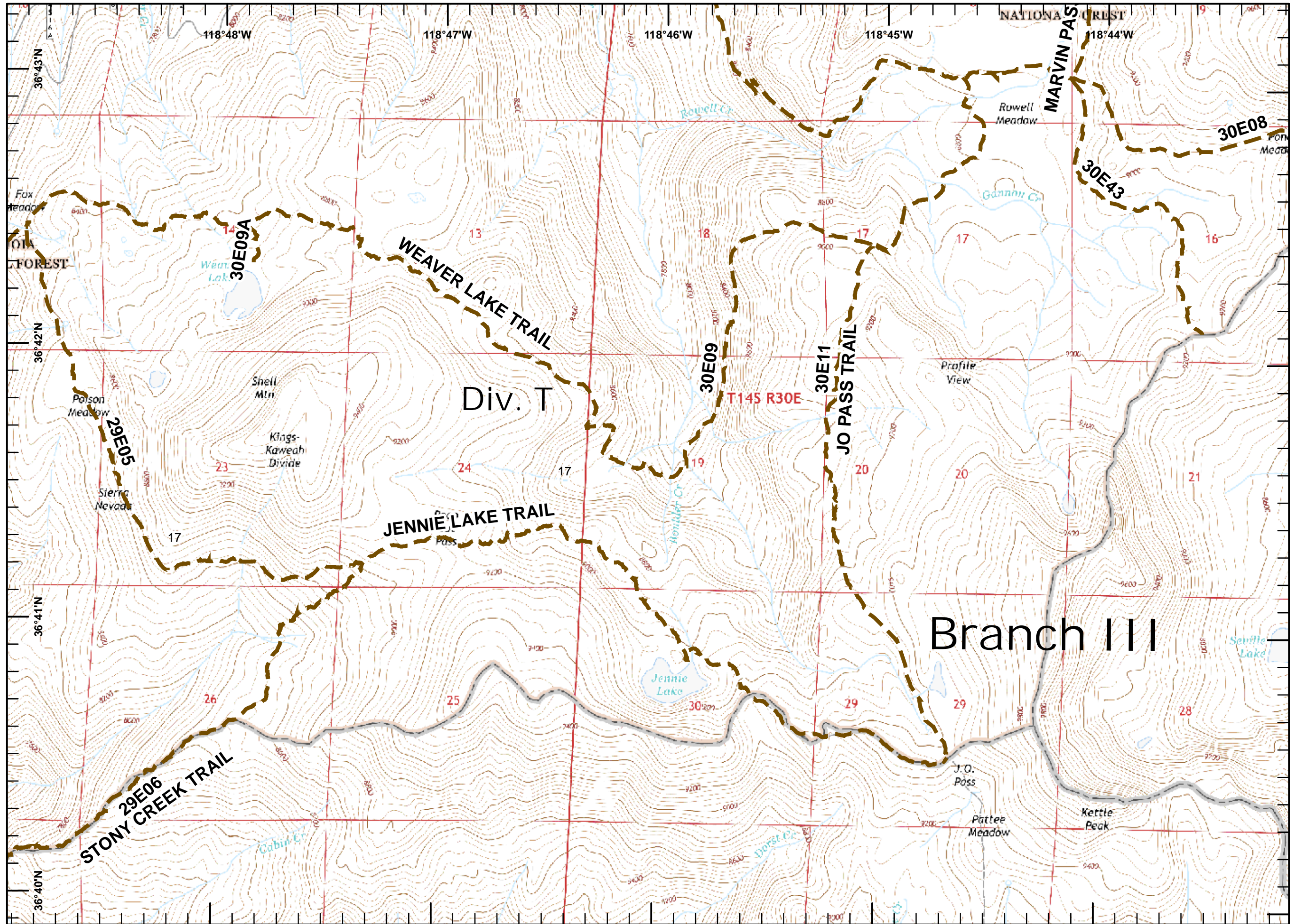
1:24,000

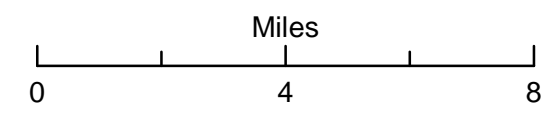
Miles



Legend

Trail





# Rough Incident CA-SNF-001746



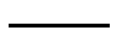






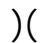

# Transportation Map



August 22, 2015

DSD 8/18/2015

### Legend

-  Rough\_Lakes
-  GarlicMdw
-  HsVicinityRds
-  RoughMjrStrm
-  KingsCayonNP
-  Sierra\_SequoiaForestBoundary
-  Rough Incident Point of Origin
-  Turn Intersection
-  Spike Camp
-  Division Break
-  Branch Break

To Rough ICP: From Prather District Office travel 17 miles east on State Route 168 to Shaver Lake. Turn right on Dinkey Creek Road and travel east 10 miles to Dinkey Mill Work Center Camp.

Dinkey Mill Work Center Camp to Rough Incident: Travel east 1 mile on Dinkey Creek Road to Mckinley Grove Road. Turn right on McKinley Grove Road and travel 20 miles east to Forest Road 11S07. Travel 5-10 miles south on 11S07 to Division C of Rough Incident.

