

Pilot's Map

Rough Incident CA-SNF-001746



Sept. 4, 2015
NAD83 UTM 11

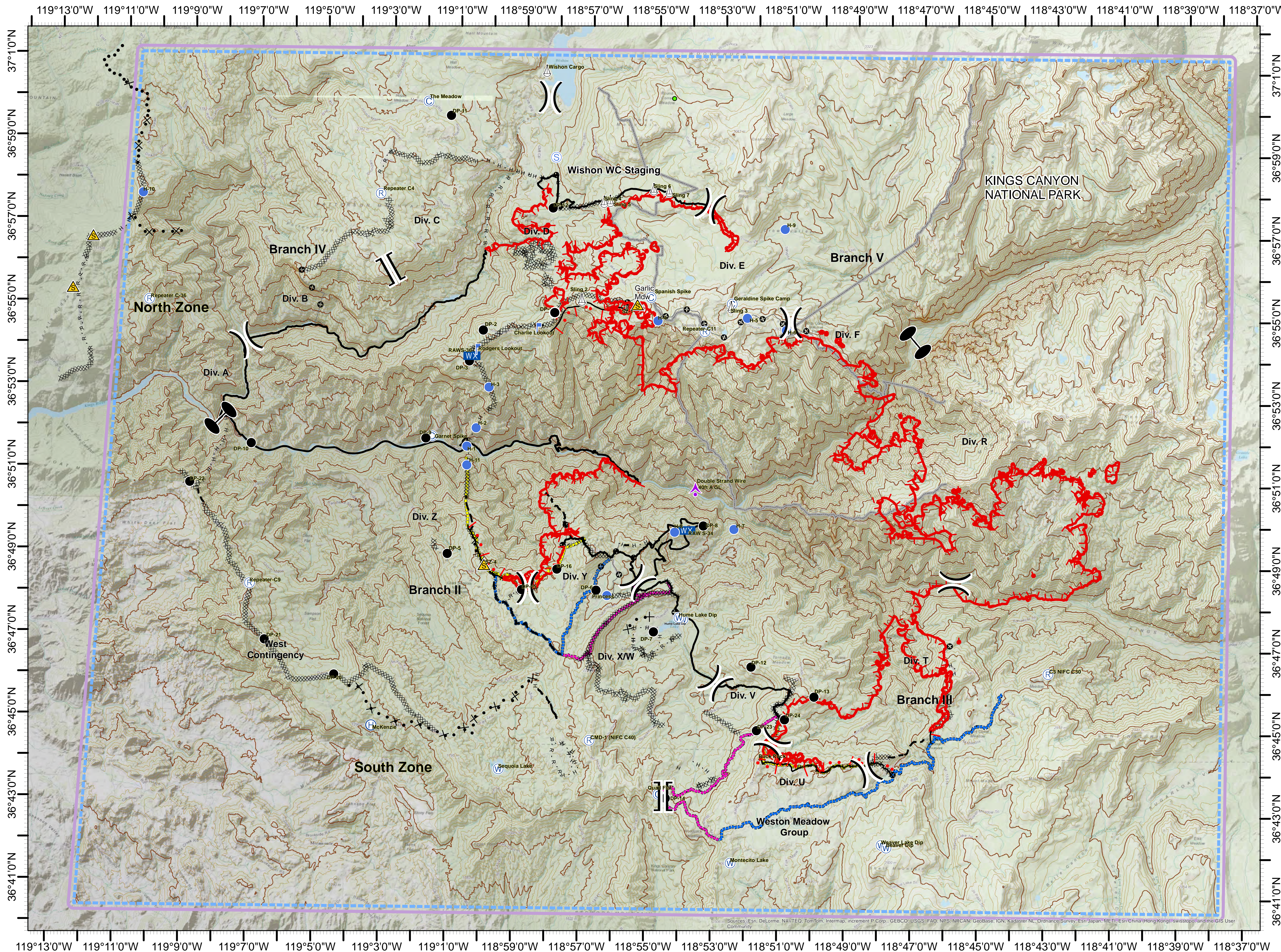


	XXXXX Completed Dozer Line
	— Completed Line
	H - H Hand Line
	R - R Road as Completed Line
	— Active Burnout
	--- Planned Fire Line
	••• Planned Secondary Line
	X•• Proposed Dozer Line
	(X X) Ridge / Geographic Feature
	○ Other
	▭ Primary Contingency
	▭ Secondary Contingency
	▭ Tertiary Contingency
	▭ Wilderness Boundary
	— 1000' Contour
	— 200' Contour

Rough Incident Helispots and Points			
Name	Lat	Lon	Elev
H-1	36° 51.670	119° 00.595	1,300'
H-2	36° 52.114	119° 00.326	3,000'
H-3	36° 53.105	118° 59.963	5,000'
H-4	36° 54.794	118° 54.907	9,200'
H-5	36° 54.899	118° 52.216	9,550'
H-6	36° 54.62	118° 7131.04	9,620'
H-7	36° 49.777	118° 52.5	3,580'
H-8	36° 49.681	118° 54.238	5,150'
H-9	36° 57.066	118° 51.130	7,780'
H-10	36° 57.652	119° 10.509	5,260'
H-11	36° 51.209	119° 0.584	2,600'
Wishon Cargo	37° 00.800	118° 58.411	6,615'
Princess Helispot	36° 48.100	118° 56.25	7,780'
McKenzie Cargo	36° 44.868	119° 1.152	7,780'
Hume Lake Dip Site	36° 47.617	118° 54.102	5,250'
Montecito Dip Site	36° 41.697	118° 52.415	7,400'
Weaver Lake Dip Site	36° 42.180	118° 47.890	8,800'
Sequoia Dip Site	36° 43.867	118° 59.446	5,340'

Rough Incident Hoist Only			
Name	Lat	Lon	Elev
Hoist Only-1	36° 51.872	119° 00.599	2,000'
Hoist Only-2	36° 52.258	118° 59.999	3,400'

Rough Incident Sling Sites			
Name	Lat	Lon	Elev
Sling-1/Hoist	36° 55.226	118° 56.151	9,300'
Sling-2	36° 55.277	118° 57.220	8,400'
Sling-3	36° 55.210	118° 52.697	8,755'
Sling-4	36° 57.654	118° 56.605	7,680'
Sling-5	36° 57.678	118° 56.424	7,810'
Sling-6	36° 57.983	118° 55.116	8,240'
Sling-7	36° 57.948	118° 54.644	8,250'



Sources: Esri, DeLorme, NAVTEQ, TomTom, Intermap, increment P Corp., GEBCO, USGS, FAO, NPS, NRCAN, GeoBase, IGN, Kadaster NL, Ordnance Survey, Esri Japan, METI, Esri China (Hong Kong), Swisstopo, and the GIS User Community