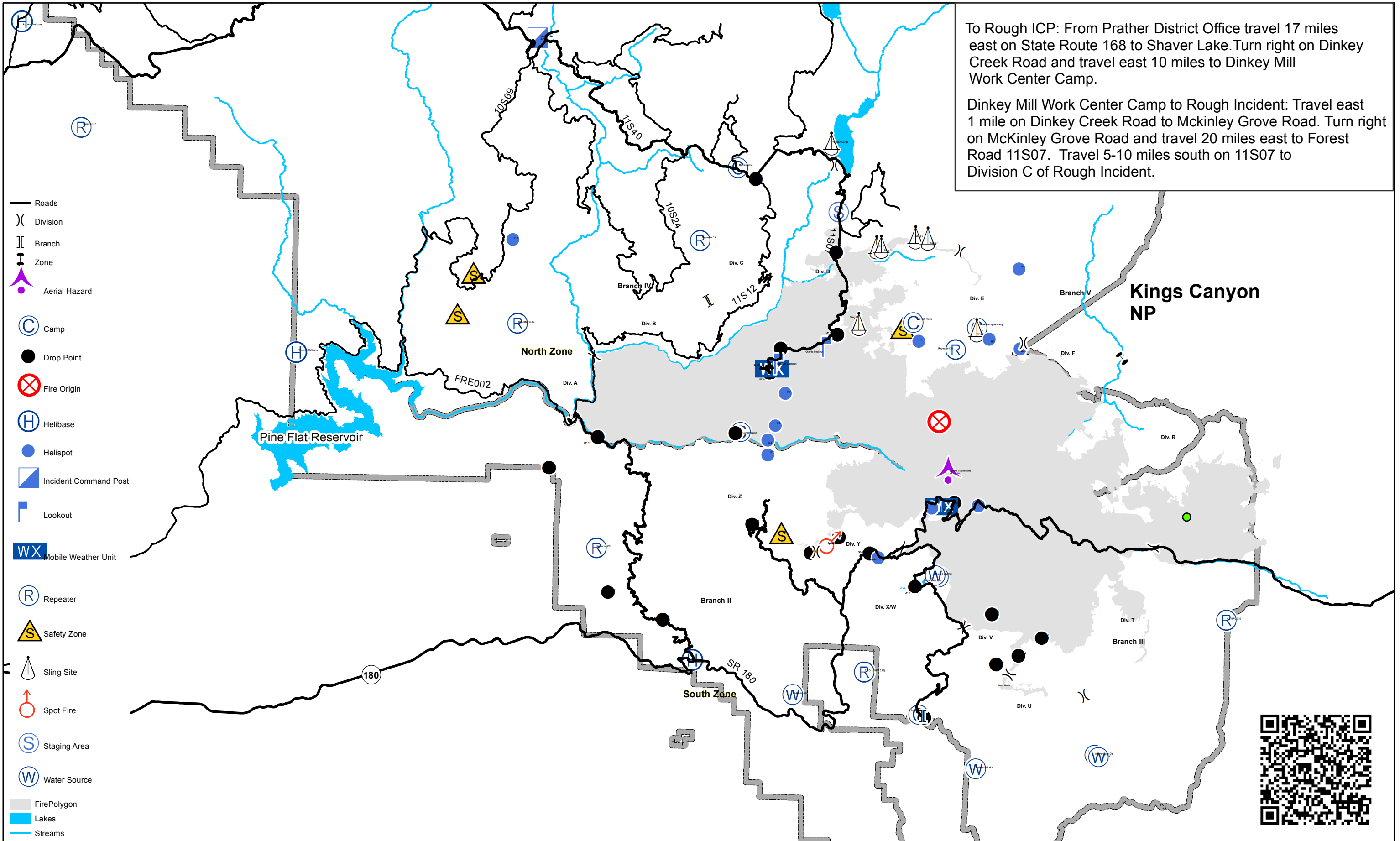
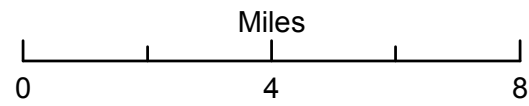


Rough Incident CA-SNF-001746

Transportation Map

September 4, 2015



To Rough ICP: From Prather District Office travel 17 miles east on State Route 168 to Shaver Lake. Turn right on Dinkey Creek Road and travel east 10 miles to Dinkey Mill Work Center Camp.

Dinkey Mill Work Center Camp to Rough Incident: Travel east 1 mile on Dinkey Creek Road to Mckinley Grove Road. Turn right on McKinley Grove Road and travel 20 miles east to Forest Road 11S07. Travel 5-10 miles south on 11S07 to Division C of Rough Incident.

- Roads
- Division
- Branch
- Zone
- Aerial Hazard
- Camp
- Drop Point
- Fire Origin
- Helibase
- Helispot
- Incident Command Post
- Lookout
- Mobile Weather Unit
- Repeater
- Safety Zone
- Sling Site
- Spot Fire
- Staging Area
- Water Source
- FirePolygon
- Lakes
- Streams

