



119°4'W 119°3'W 119°2'W 119°1'W 118°60'W 118°59'W 118°58'W 118°57'W 118°56'W 118°55'W 118°54'W 118°53'W


Rough Fire CA-SNF-1746

Branch II Ops 9/6/15
Perimeter as of 9/5/15 0930 85,796 ac.




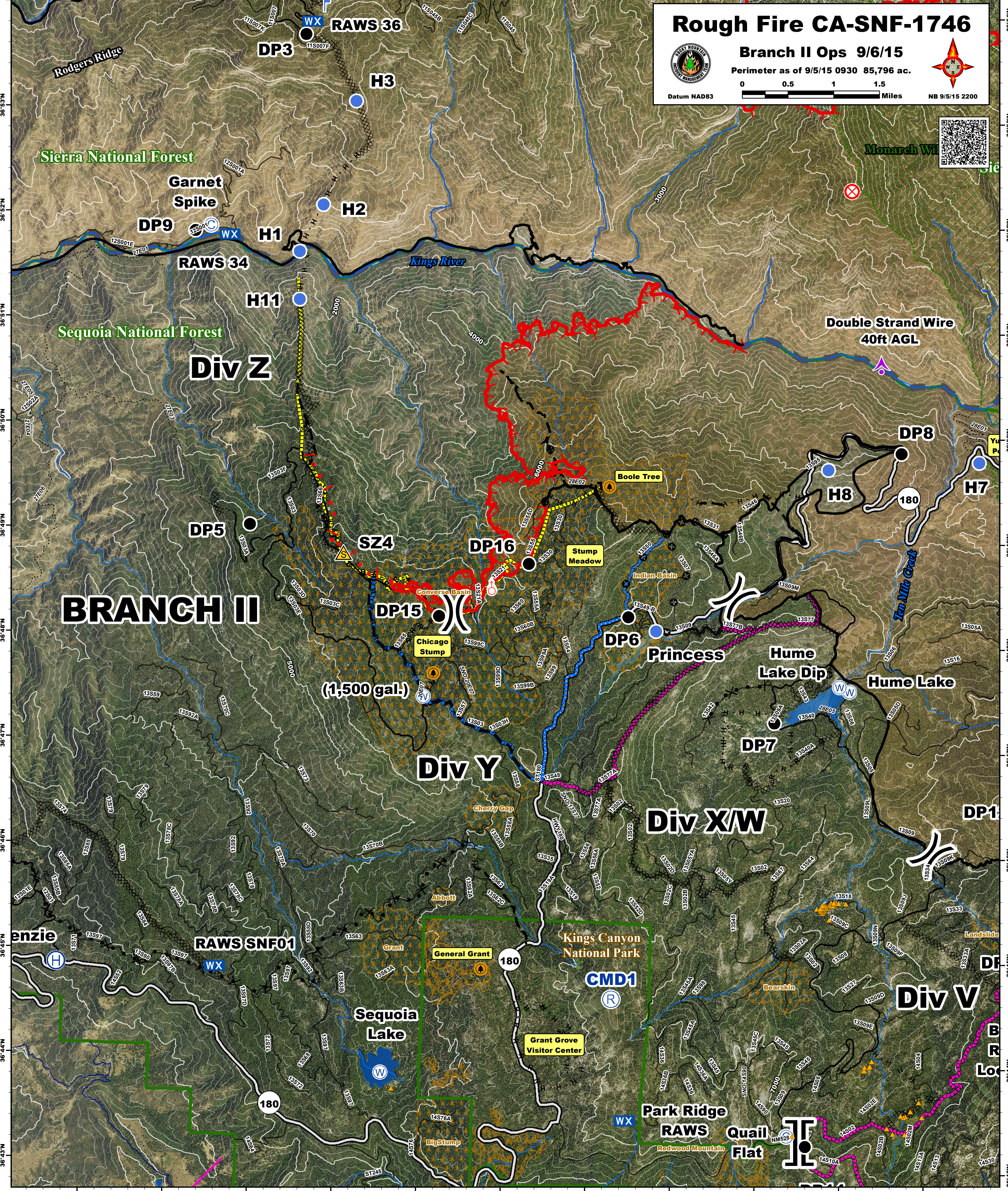
Datum NAD83





NB 9/5/15 2200





| | | | | | |
|--|--|--|--|--|--|
| | | | | | |
| | | | | | |
| | | | | | |
| | | | | | |
| | | | | | |
| | | | | | |
| | | | | | |