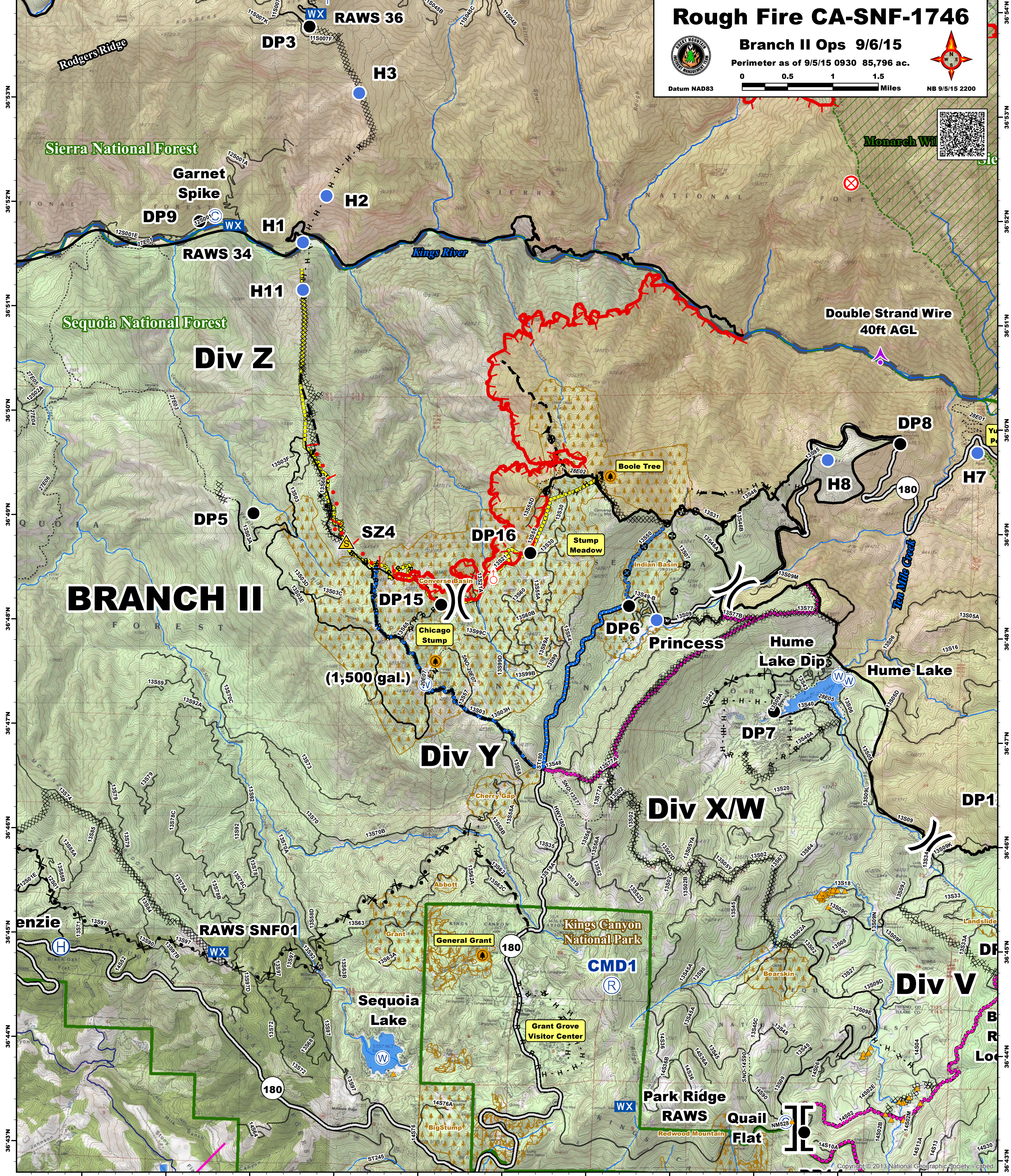


119°4'W 119°3'W 119°2'W 119°1'W 118°60'W 118°59'W 118°58'W 118°57'W 118°56'W 118°55'W 118°54'W 118°53'W

**Rough Fire CA-SNF-1746**  
 Branch II Ops 9/6/15  
 Perimeter as of 9/5/15 0930 85,796 ac.  
 Datum NAD83 0 0.5 1 1.5 Miles NB 9/5/15 2200




Copyright © 2013 National Geographic Society. Reproduced