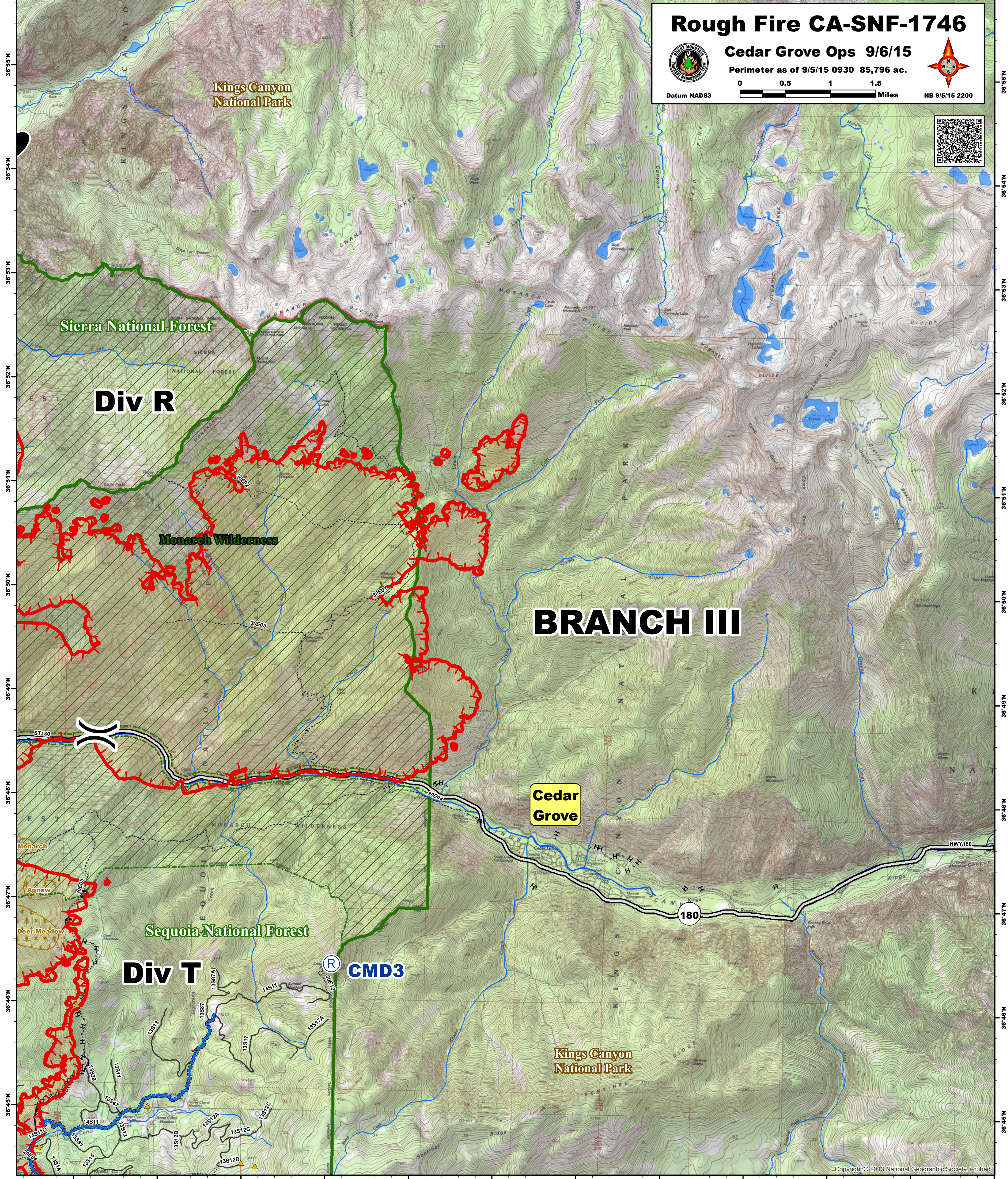


118°46'W 118°45'W 118°44'W 118°43'W 118°42'W 118°41'W 118°40'W 118°39'W 118°38'W 118°37'W 118°36'W

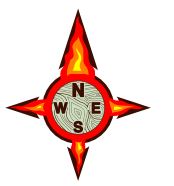


# Rough Fire CA-SNF-1746

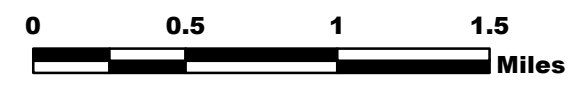


## Cedar Grove Ops 9/6/15

Perimeter as of 9/5/15 0930 85,796 ac.



Datum NAD83



NB 9/5/15 2200



36°55'N 36°54'N 36°53'N 36°52'N 36°51'N 36°50'N 36°49'N 36°48'N 36°47'N 36°46'N 36°45'N

118°46'W 118°45'W 118°44'W 118°43'W 118°42'W 118°41'W 118°40'W 118°39'W 118°38'W 118°37'W 118°36'W

	Aerial Hazard		Helibase		Safety Zone		Active Burnout		Proposed Dozer Line		Primary Contingency
	Retardant		Helispot		Sling Site		Completed Dozer Line		Ridge / Geographic Feature		Secondary Contingency
	Camp		ICP		Staging Area		Completed Line		Road as Completed Line		Tertiary Contingency
	Drop Point		Lookout		GPS Structures		Other		Uncontrolled Fire Edge		Forest Boundary
	Spot Fire		Mobile Weather Unit		Water Source		Planned Fire Line		Transmission Lines		Wilderness
	Fire Origin		Repeater				Planned Secondary Line		Zone Break Boundary		Groves
											Values at Risk

Copyright © 2013 National Geographic Society, Inc.