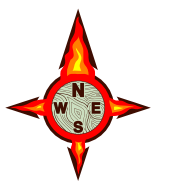


119°2'W 119°1'W 119°0'W 118°59'W 118°58'W 118°57'W 118°56'W 118°55'W 118°54'W 118°53'W 118°52'W 118°51'W

Rough Fire CA-SNF-1746

Branch II Ops 9/8/15

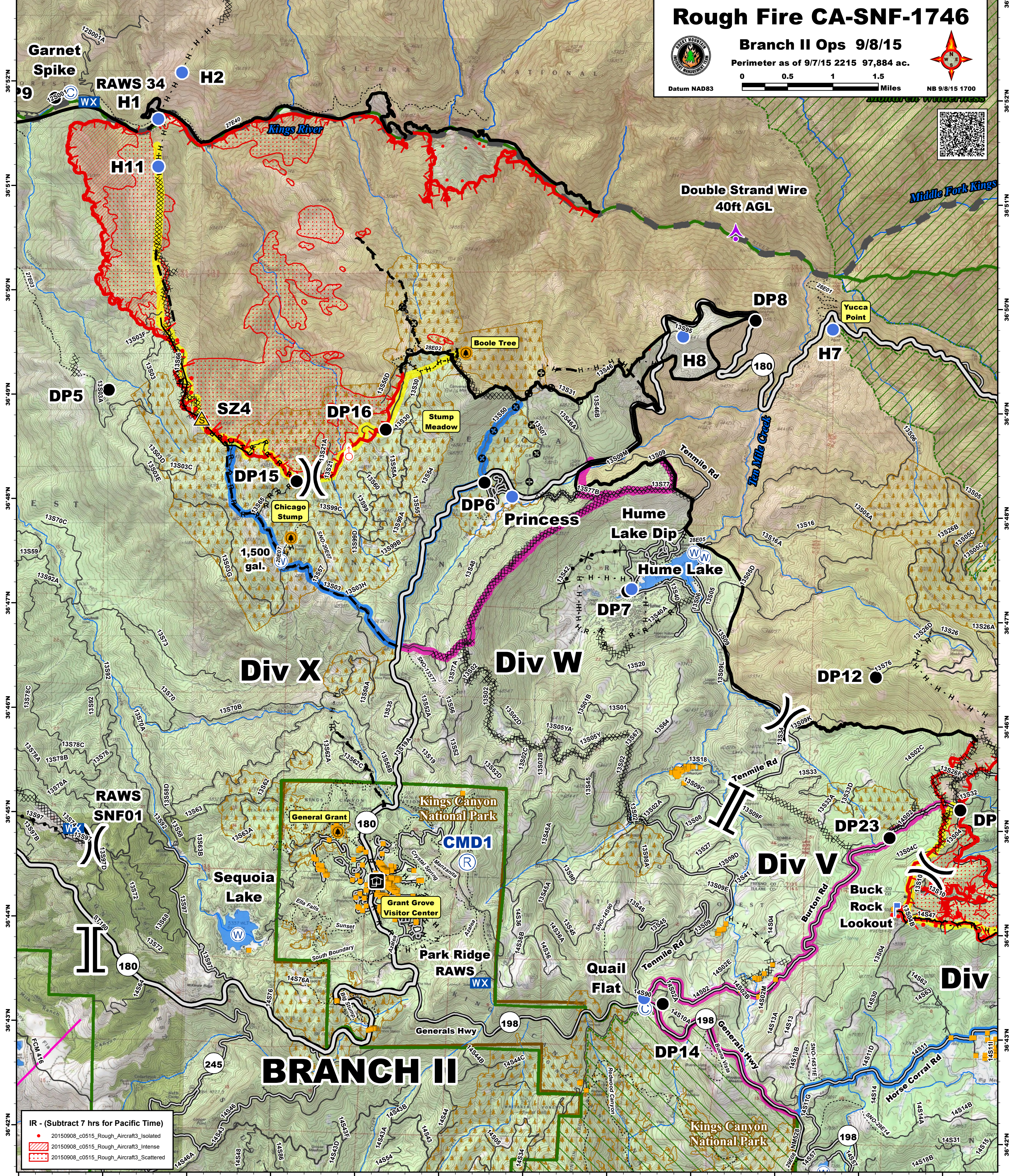
Perimeter as of 9/7/15 2215 97,884 ac.



0 0.5 1 1.5 Miles

Datum NAD83

NB 9/8/15 1700



IR - (Subtract 7 hrs for Pacific Time)
20150908_c0515_Rough_Aircraft3_Isolated
20150908_c0515_Rough_Aircraft3_Intense
20150908_c0515_Rough_Aircraft3_Scattered

- | | | | | | | |
|---------------|---------------------|----------------|------------------------|----------------------------|-----------------------|-----------------|
| Aerial Hazard | Helibase | Safety Zone | Active Burnout | Proposed Dozer Line | Primary Contingency | Visitor Centers |
| Retardant | Helispot | Sling Site | Completed Dozer Line | Ridge / Geographic Feature | Secondary Contingency | Ranger Stations |
| Camp | ICP | Staging Area | Completed Line | Road as Completed Line | Tertiary Contingency | |
| Drop Point | Lookout | Structures | Hand Line | Other | Forest Boundary | |
| Spot Fire | Mobile Weather Unit | Water Source | Planned Fire Line | Uncontrolled Fire Edge | Wilderness | |
| Fire Origin | Repeater | Values at Risk | Planned Secondary Line | Transmission Lines | NPS Wilderness | |
| | | | | Zone Break Boundary | Giant Sequoia Groves | |

36°52'N 36°51'N 36°50'N 36°49'N 36°48'N 36°47'N 36°46'N 36°45'N 36°44'N 36°43'N 36°42'N

119°2'W 119°1'W 119°0'W 118°59'W 118°58'W 118°57'W 118°56'W 118°55'W 118°54'W 118°53'W 118°52'W 118°51'W