

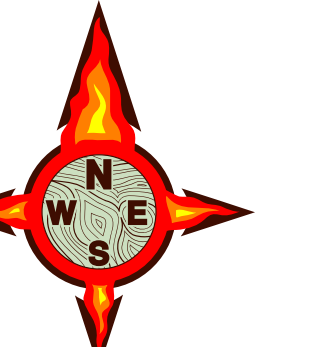
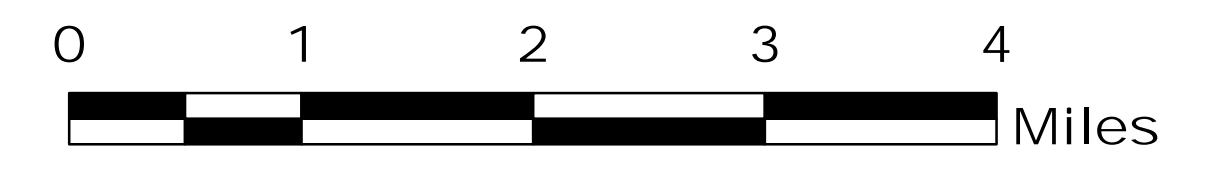
Rough Fire CA-SNF-1746

Operations Map 9/8/15

Perimeter as of 9/7/15 2215 97,884 ac.



Datum NAD83

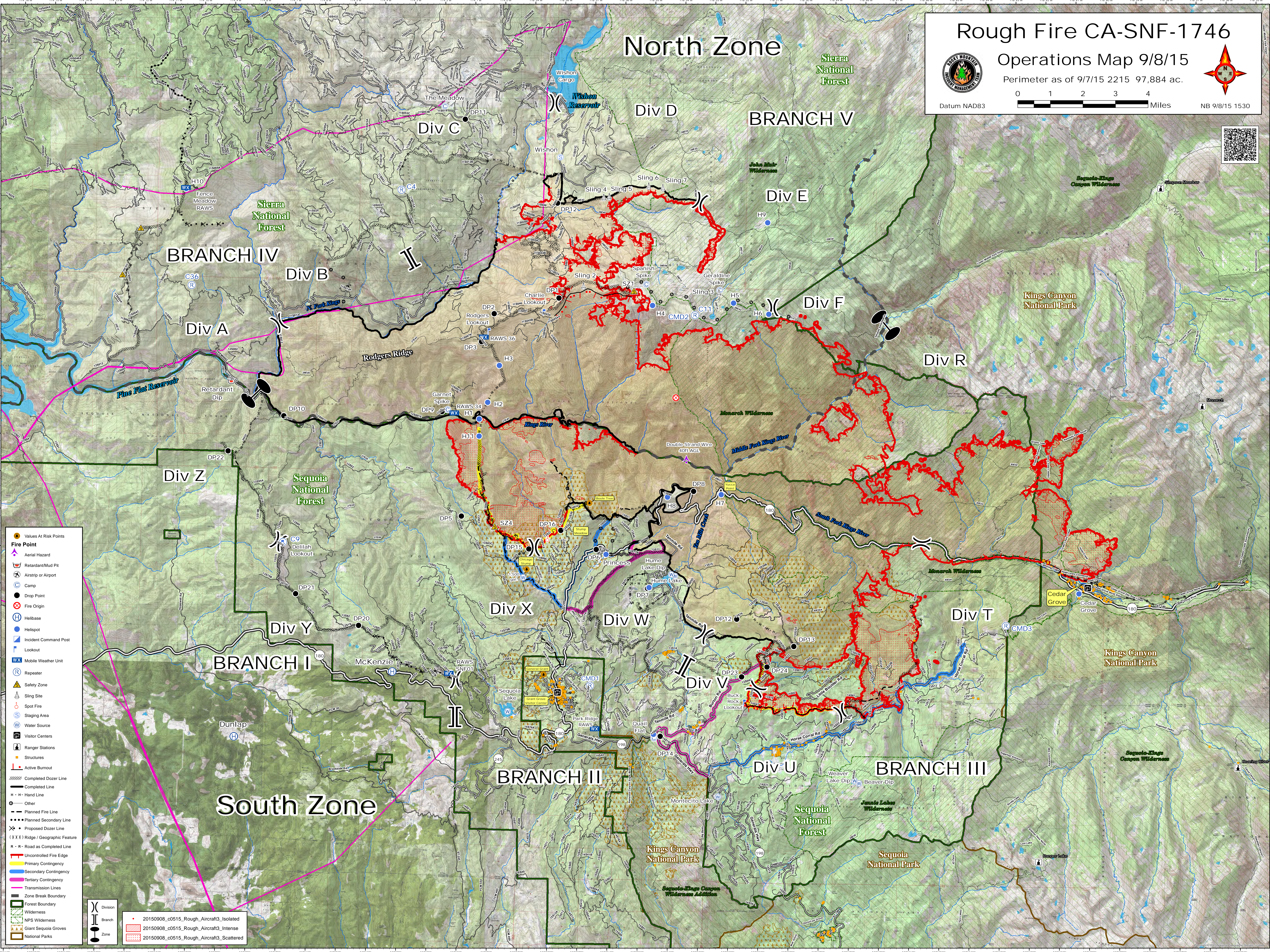


NB 9/8/15 1530



North Zone

South Zone



- Values At Risk Points
- ▲ Fire Point
- ▲ Aerial Hazard
- ▲ Retardant/Mud Pit
- ✈ Airstrip or Airport
- ⊙ Camp
- Drop Point
- ⊗ Fire Origin
- ⊙ Helibase
- ⊙ Helispot
- ⊙ Incident Command Post
- ⊙ Lookout
- ⊙ Mobile Weather Unit
- ⊙ Repeater
- ▲ Safety Zone
- ▲ Sling Site
- ⊙ Spot Fire
- ⊙ Staging Area
- ⊙ Water Source
- ⊙ Visitor Centers
- ⊙ Ranger Stations
- ⊙ Structures
- ⊙ Active Burnout
- ⊙ Completed Dozer Line
- ⊙ Completed Line
- ⊙ Hand Line
- ⊙ Other
- ⊙ Planned Fire Line
- ⊙ Planned Secondary Line
- ⊙ Proposed Dozer Line
- ⊙ Ridge / Geographic Feature
- ⊙ Road as Completed Line
- ⊙ Uncontrolled Fire Edge
- ⊙ Primary Contingency
- ⊙ Secondary Contingency
- ⊙ Tertiary Contingency
- ⊙ Transmission Lines
- ⊙ Zone Break Boundary
- ⊙ Forest Boundary
- ⊙ Wilderness
- ⊙ NPS Wilderness
- ⊙ Giant Sequoia Groves
- ⊙ National Parks

- 20150908_c0515_Rough_Aircraft3_Isolated
- 20150908_c0515_Rough_Aircraft3_Intense
- 20150908_c0515_Rough_Aircraft3_Scattered