

Pilot's Map



(In Operations folder)

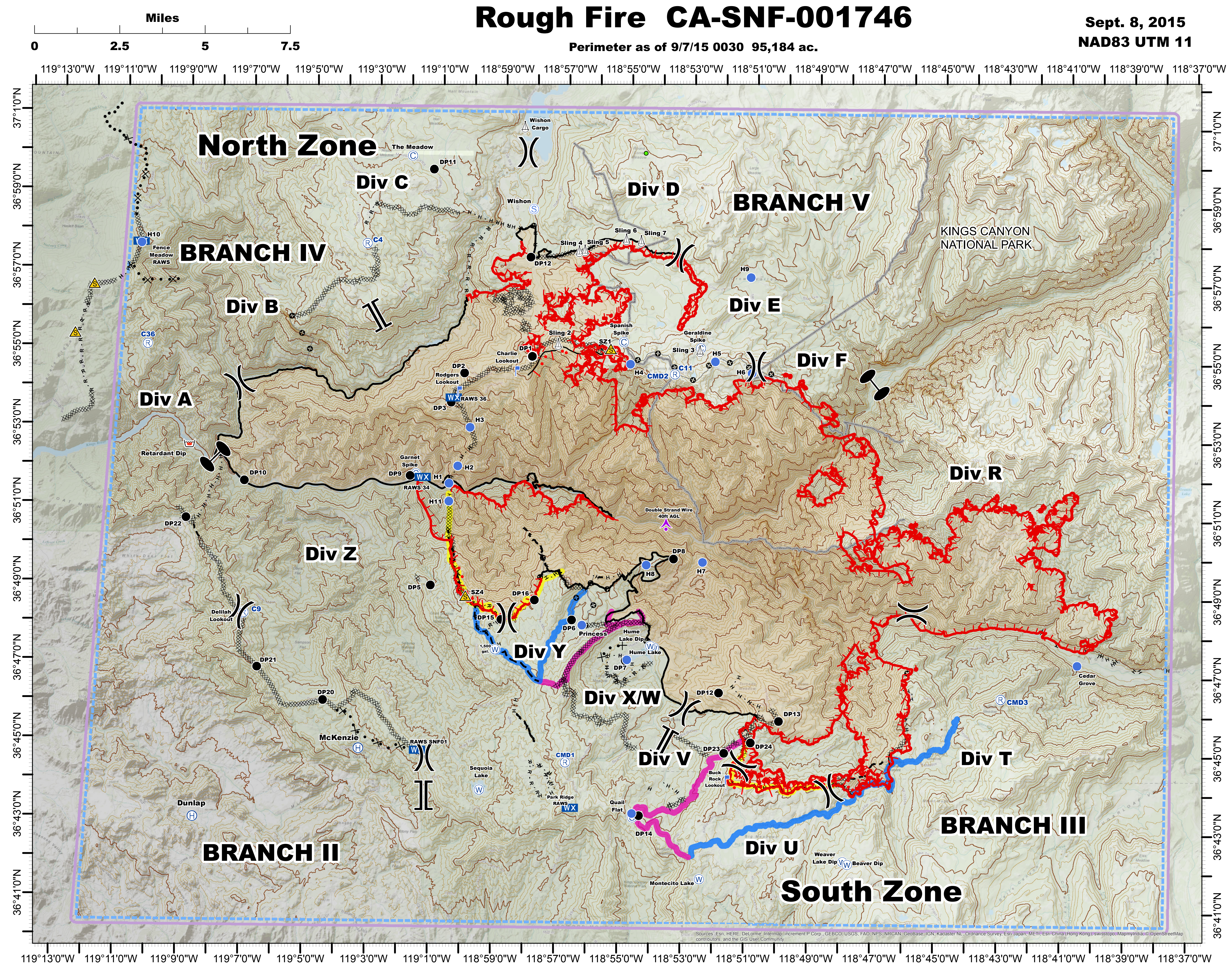
	Division		Completed Dozer Line
	Branch		Completed Line
	Zone		Hand Line
	Retardant		Road as Completed Line
	Drop Point		Active Burnout
	Aerial Hazard		Planned Fire Line
	Helibase		Planned Secondary Line
	Helispot		Proposed Dozer Line
	Lookout		Ridge / Geographic Feature
	Mobile Weather Unit		Other
	Repeater		Primary Contingency
	Safety Zone		Secondary Contingency
	Sling Site		Tertiary Contingency
	Staging Area		Wilderness Boundary
	Water Source		1000' Contour
	Camp		200' Contour
	Uncontrolled Fire Edge		



Rough Incident Helispots and Points			
Name	Lat	Long	Elev
H1	36° 51.670	119° 0.595	1,300'
H2	36° 52.114	119° 0.326	3,000'
H3	36° 53.105	118° 59.963	5,000'
H4	36° 54.794	118° 54.907	9,200'
H5	36° 54.899	118° 52.216	9,550'
H6	36° 54.615	118° 51.026	9,620'
H7	36° 49.777	118° 52.5	3,580'
H8	36° 49.681	118° 54.238	5,150'
H9	36° 57.066	118° 51.130	7,780'
H10	36° 57.652	119° 10.509	5,260'
H11	36° 51.209	119° 0.584	2,600'
Wishon Cargo	37° 0.800	118° 58.411	6,615'
Princess Helispot	36° 48.100	118° 56.25	7,780'
McKenzie Cargo	36° 44.868	119° 01.152	7,780'
Hume Lake Dip Site	36° 47.617	118° 54.102	5,250'
Hume Lake Helispot	36° 47.253	118° 54.837	5,200'
Montecito Dip Site	36° 41.697	118° 52.415	7,400'
Weaver Lake Dip Site	36° 42.180	118° 47.890	8,800'
Sequoia Dip Site	36° 43.867	118° 59.446	5,340'
Quail Flat Helispot	36° 43.335	118° 54.592	7,000'
Retardant Plant	36° 52.538	119° 08.860	1,000'
Dunlap Helibase	36° 43.046	119° 08.517	2,120'
Cedar Grove Helispot	36° 47.300	118° 40.553	4,919'

Rough Incident Hoist Only			
Name	Lat	Long	Elev
Hoist Only-1	36° 51.872	119° 0.599	2,000'
Hoist Only-2	36° 52.258	118° 59.999	3,400'

Rough Incident Sling Sites			
Name	Lat	Long	Elev
Sling-1/Hoist	36° 55.226	118° 56.151	9,300'
Sling-2	36° 55.277	118° 57.220	8,400'
Sling-3	36° 55.210	118° 52.697	8,755'
Sling-4	36° 57.654	118° 56.605	7,680'
Sling-5	36° 57.678	118° 56.424	7,810'
Sling-6	36° 57.983	118° 55.116	8,240'
Sling-7	36° 57.948	118° 54.644	8,250'



Rough Fire CA-SNF-001746

Sept. 8, 2015
NAD83 UTM 11

Perimeter as of 9/7/15 0030 95,184 ac.

Sources: Esri, HERE, DeLorme, Intermap, increment P Corp., GEBCO, USGS, FAO, NPS, NRCAN, GeoBase, IGN, Kadaster NL, Ordnance Survey, Esri, Japan, METI, Esri, China (Hong Kong), Swisstopo, MapmyIndia, © OpenStreetMap contributors, and the GIS User Community