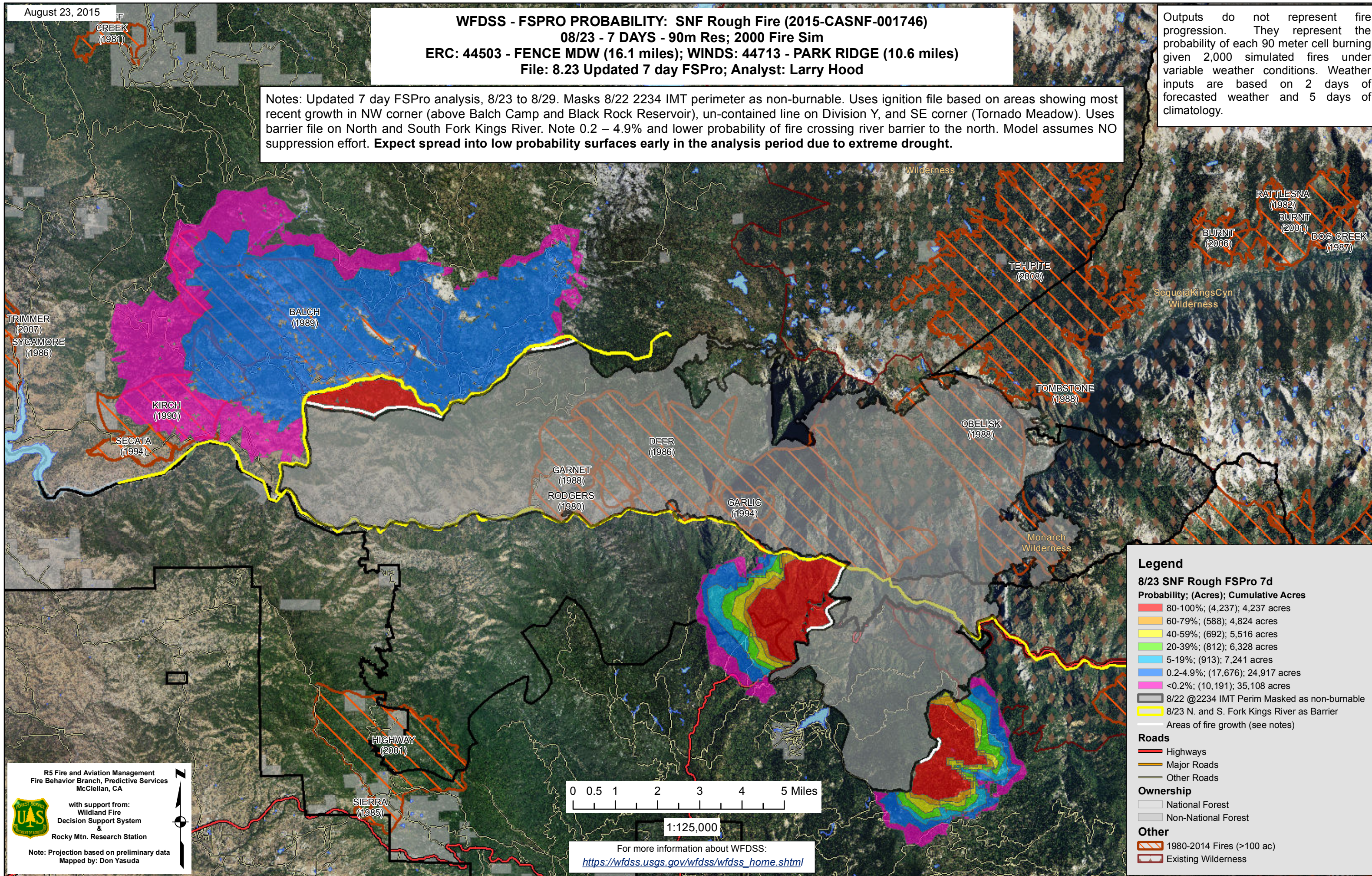


August 23, 2015

WFDSS - FSPRO PROBABILITY: SNF Rough Fire (2015-CASN-001746)
08/23 - 7 DAYS - 90m Res; 2000 Fire Sim
ERC: 44503 - FENCE MDW (16.1 miles); WINDS: 44713 - PARK RIDGE (10.6 miles)
File: 8.23 Updated 7 day FSPro; Analyst: Larry Hood

Notes: Updated 7 day FSPro analysis, 8/23 to 8/29. Masks 8/22 2234 IMT perimeter as non-burnable. Uses ignition file based on areas showing most recent growth in NW corner (above Balch Camp and Black Rock Reservoir), un-contained line on Division Y, and SE corner (Tornado Meadow). Uses barrier file on North and South Fork Kings River. Note 0.2 – 4.9% and lower probability of fire crossing river barrier to the north. Model assumes NO suppression effort. **Expect spread into low probability surfaces early in the analysis period due to extreme drought.**

Outputs do not represent fire progression. They represent the probability of each 90 meter cell burning given 2,000 simulated fires under variable weather conditions. Weather inputs are based on 2 days of forecasted weather and 5 days of climatology.



Legend

8/23 SNF Rough FSPro 7d

Probability; (Acres); Cumulative Acres

- 80-100%; (4,237); 4,237 acres
- 60-79%; (588); 4,824 acres
- 40-59%; (692); 5,516 acres
- 20-39%; (812); 6,328 acres
- 5-19%; (913); 7,241 acres
- 0.2-4.9%; (17,676); 24,917 acres
- <0.2%; (10,191); 35,108 acres

- 8/22 @2234 IMT Perim Masked as non-burnable
- 8/23 N. and S. Fork Kings River as Barrier
- Areas of fire growth (see notes)

Roads

- Highways
- Major Roads
- Other Roads

Ownership

- National Forest
- Non-National Forest

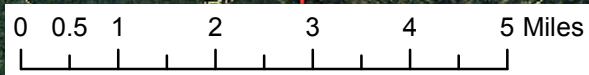
Other

- 1980-2014 Fires (>100 ac)
- Existing Wilderness

R5 Fire and Aviation Management
 Fire Behavior Branch, Predictive Services
 McClellan, CA

with support from:
 Wildland Fire
 Decision Support System
 &
 Rocky Mtn. Research Station

Note: Projection based on preliminary data
 Mapped by: Don Yasuda



1:125,000

For more information about WFDSS:
https://wfdss.usgs.gov/wfdss/wfdss_home.shtml