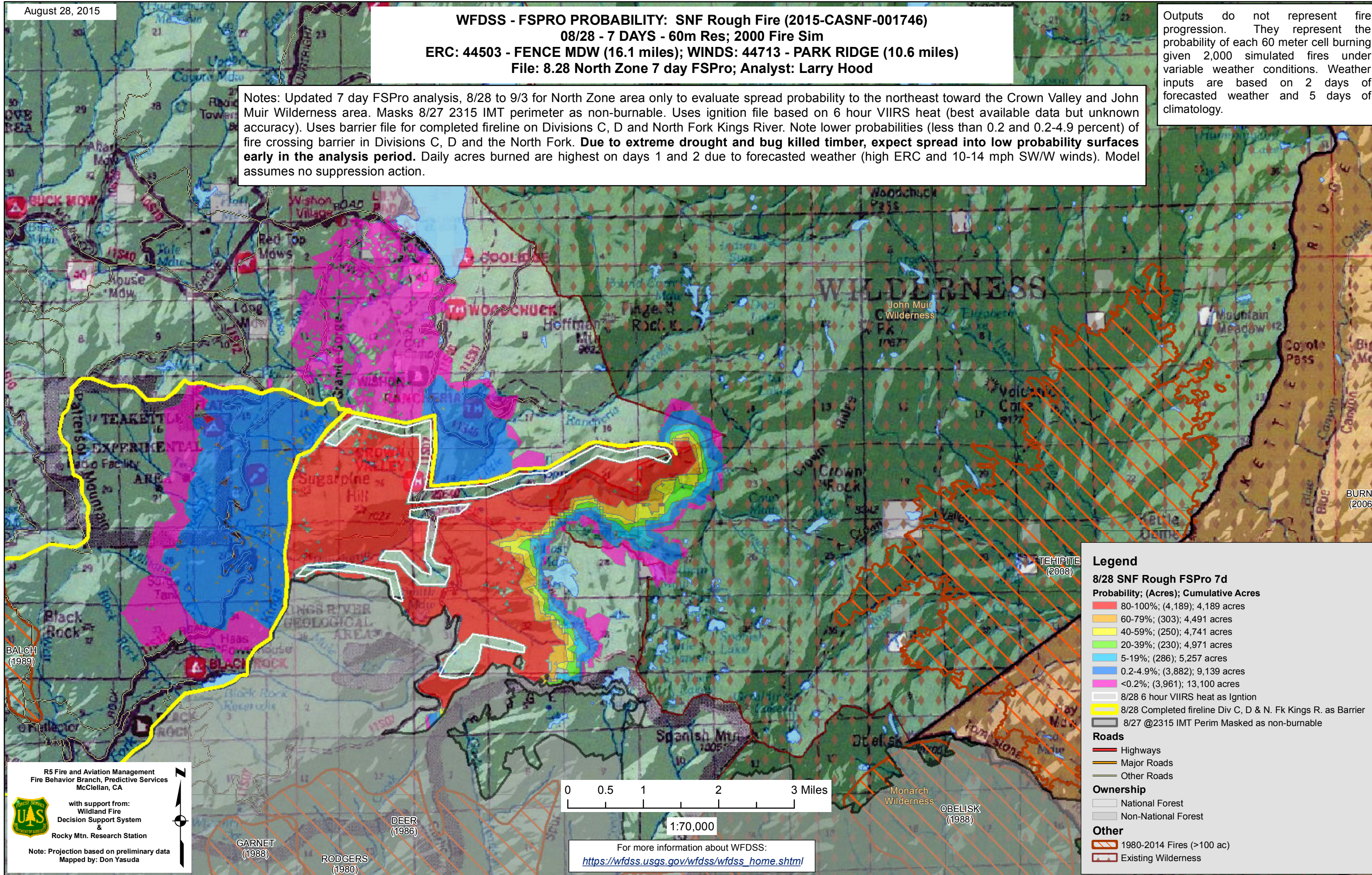


WFDSS - FSPRO PROBABILITY: SNF Rough Fire (2015-CASN-001746)
08/28 - 7 DAYS - 60m Res; 2000 Fire Sim
ERC: 44503 - FENCE MDW (16.1 miles); WINDS: 44713 - PARK RIDGE (10.6 miles)
File: 8.28 North Zone 7 day FSPRO; Analyst: Larry Hood

Notes: Updated 7 day FSPRO analysis, 8/28 to 9/3 for North Zone area only to evaluate spread probability to the northeast toward the Crown Valley and John Muir Wilderness area. Masks 8/27 2315 IMT perimeter as non-burnable. Uses ignition file based on 6 hour VIIRS heat (best available data but unknown accuracy). Uses barrier file for completed fireline on Divisions C, D and North Fork Kings River. Note lower probabilities (less than 0.2 and 0.2-4.9 percent) of fire crossing barrier in Divisions C, D and the North Fork. **Due to extreme drought and bug killed timber, expect spread into low probability surfaces early in the analysis period.** Daily acres burned are highest on days 1 and 2 due to forecasted weather (high ERC and 10-14 mph SW/W winds). Model assumes no suppression action.

Outputs do not represent fire progression. They represent the probability of each 60 meter cell burning given 2,000 simulated fires under variable weather conditions. Weather inputs are based on 2 days of forecasted weather and 5 days of climatology.



Legend

8/28 SNF Rough FSPRO 7d

Probability; (Acres); Cumulative Acres

- 80-100%; (4,189); 4,189 acres
- 60-79%; (303); 4,491 acres
- 40-59%; (250); 4,741 acres
- 20-39%; (230); 4,971 acres
- 5-19%; (286); 5,257 acres
- 0.2-4.9%; (3,882); 9,139 acres
- <0.2%; (3,961); 13,100 acres

- 8/28 6 hour VIIRS heat as Ignition
- 8/28 Completed fireline Div C, D & N. Fk Kings R. as Barrier
- 8/27 @2315 IMT Perim Masked as non-burnable

Roads

- Highways
- Major Roads
- Other Roads

Ownership

- National Forest
- Non-National Forest

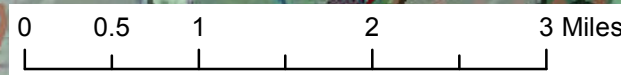
Other

- 1980-2014 Fires (>100 ac)
- Existing Wilderness

R5 Fire and Aviation Management
 Fire Behavior Branch, Predictive Services
 McClellan, CA

with support from:
 Wildland Fire
 Decision Support System
 &
 Rocky Mtn. Research Station

Note: Projection based on preliminary data
 Mapped by: Don Yasuda



1:70,000

For more information about WFDSS:
https://wfdss.usgs.gov/wfdss/wfdss_home.shtml

BALCH (1989)

GARNET (1983)

RODGERS (1980)

DEER (1986)

Monarch Wilderness

OBELISK (1988)

BURNT (2006)

TEHIPITE (2003)

Spanish Mtn (2005)

BUCK NOW

HOUSE MOW

LONG MOW

WISHON MOW

RED TOP MOWS

WOODCHUCK

TEAKETTLE

EXPERIMENTAL AREA

BLACK ROCK

BLACK ROCK

BLACK ROCK

BLACK ROCK

BLACK ROCK

BLACK ROCK

BLACK ROCK

BLACK ROCK

BLACK ROCK

BLACK ROCK

BLACK ROCK

BLACK ROCK

BLACK ROCK

BLACK ROCK

Wishon Village

Red Top Mows

Long Mow

House Mow

Woodchuck

Teakettle

Experimental Area

Black Rock

Black Rock

Black Rock

Black Rock

Black Rock

Black Rock

Black Rock

Black Rock

Black Rock

Black Rock

Black Rock

Black Rock

Black Rock

Black Rock

Black Rock

Wishon Village

Red Top Mows

Long Mow

House Mow

Woodchuck

Teakettle

Experimental Area

Black Rock

Black Rock

Black Rock

Black Rock

Black Rock

Black Rock

Black Rock

Black Rock

Black Rock

Black Rock

Black Rock

Black Rock

Black Rock

Black Rock

Black Rock

Wishon Village

Red Top Mows

Long Mow

House Mow

Woodchuck

Teakettle

Experimental Area

Black Rock

Black Rock

Black Rock

Black Rock

Black Rock

Black Rock

Black Rock

Black Rock

Black Rock

Black Rock

Black Rock

Black Rock

Black Rock

Black Rock

Black Rock

Wishon Village

Red Top Mows

Long Mow

House Mow

Woodchuck

Teakettle

Experimental Area

Black Rock

Black Rock

Black Rock

Black Rock

Black Rock

Black Rock

Black Rock

Black Rock

Black Rock

Black Rock

Black Rock

Black Rock

Black Rock

Black Rock

Black Rock

Wishon Village

Red Top Mows

Long Mow

House Mow

Woodchuck

Teakettle

Experimental Area

Black Rock

Black Rock

Black Rock

Black Rock

Black Rock

Black Rock

Black Rock

Black Rock

Black Rock

Black Rock

Black Rock

Black Rock

Black Rock

Black Rock

Black Rock

Wishon Village

Red Top Mows

Long Mow

House Mow

Woodchuck

Teakettle

Experimental Area

Black Rock

Black Rock

Black Rock

Black Rock

Black Rock

Black Rock

Black Rock

Black Rock

Black Rock

Black Rock

Black Rock

Black Rock

Black Rock

Black Rock

Black Rock

Wishon Village

Red Top Mows

Long Mow

House Mow

Woodchuck

Teakettle

Experimental Area

Black Rock

Black Rock

Black Rock

Black Rock

Black Rock

Black Rock

Black Rock

Black Rock

Black Rock

Black Rock

Black Rock

Black Rock

Black Rock

Black Rock

Black Rock

Wishon Village

Red Top Mows

Long Mow

House Mow

Woodchuck

Teakettle

Experimental Area

Black Rock

Black Rock

Black Rock

Black Rock

Black Rock

Black Rock

Black Rock

Black Rock

Black Rock

Black Rock

Black Rock

Black Rock

Black Rock

Black Rock

Black Rock

Wishon Village

Red Top Mows

Long Mow

House Mow

Woodchuck

Teakettle

Experimental Area

Black Rock

Black Rock

Black Rock

Black Rock

Black Rock

Black Rock

Black Rock

Black Rock

Black Rock

Black Rock

Black Rock

Black Rock

Black Rock

Black Rock

Black Rock