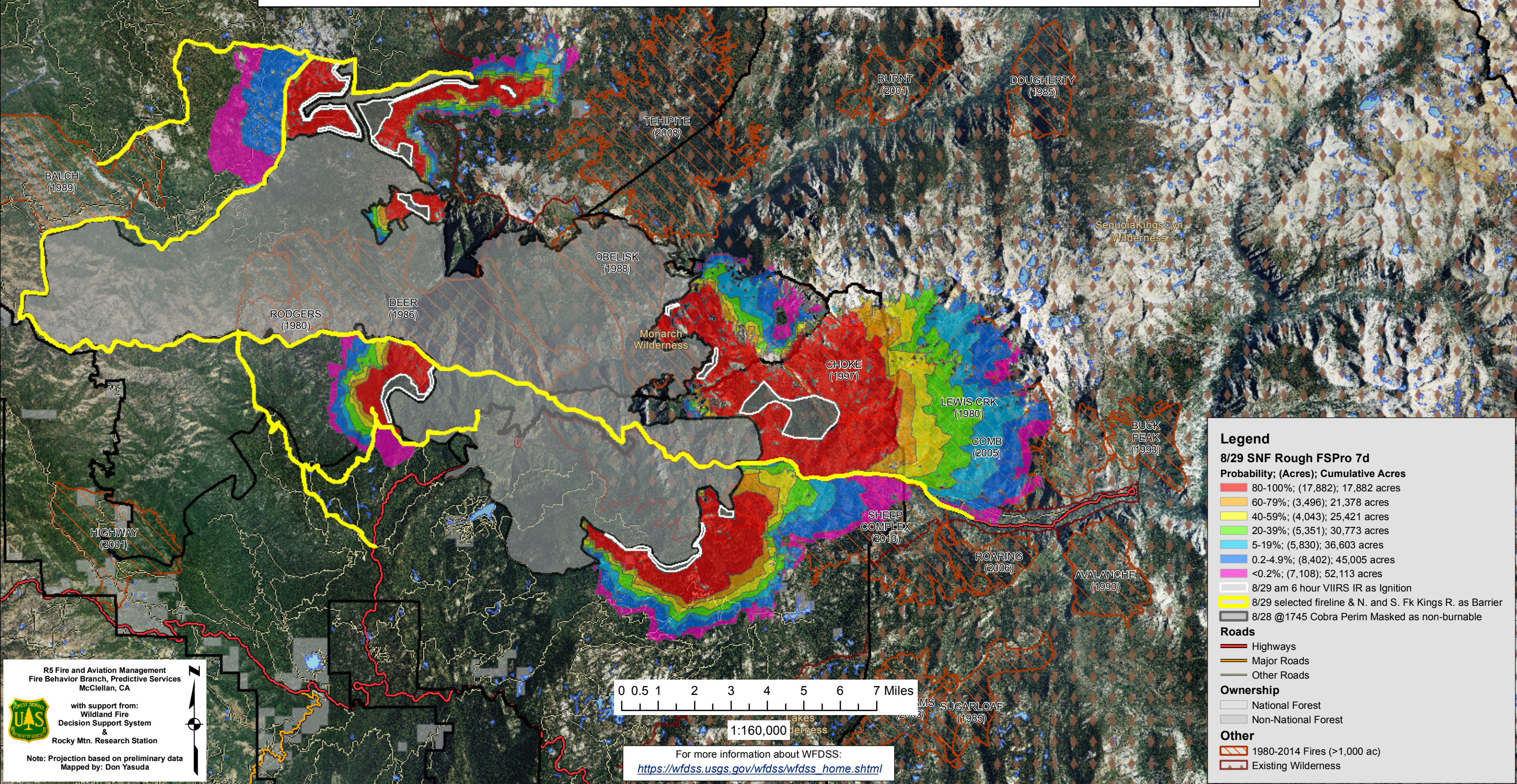


WFDSS - FSPRO PROBABILITY: SNF Rough Fire (2015-CASNF-001746)
08/29 - 7 DAYS - 90m Res; 2000 Fire Sim
ERC: 44503 - FENCE MDW (16.1 miles); WINDS: 44713 - PARK RIDGE (10.6 miles)
File: 8.29 Updated 7 day FSPro; Analyst: Larry Hood

PALISADE (2002)

Outputs do not represent fire progression. They represent the probability of each 90 meter cell burning given 2,000 simulated fires under variable weather conditions. Weather inputs are based on 2 days of forecasted weather and 5 days of climatology.

Notes: Updated 7 day FSPro analysis, 8/29 to 9/4/2015. Masks 8/28 1745 Cobra perimeter as non-burnable. Uses ignition file based on 8/29 am 6 hour VIIRS IR data. Uses barrier file for selected completed fireline and North and South Fork Kings River. Accuracy of perimeter data remains the biggest challenge in spread modeling on this incident. Note additional spread probability to NE in Division D compared to yesterday, due to additional ignition along trail in Crown Ridge area without barrier file. **Expect spread into low probability surfaces early in the analysis period due to extreme drought and bug killed timber.** Model assumes no suppression action.



Legend

8/29 SNF Rough FSPro 7d

Probability; (Acres); Cumulative Acres

- 80-100%; (17,882); 17,882 acres
- 60-79%; (3,496); 21,378 acres
- 40-59%; (4,043); 25,421 acres
- 20-39%; (5,351); 30,773 acres
- 5-19%; (5,830); 36,603 acres
- 0.2-4.9%; (8,402); 45,005 acres
- <0.2%; (7,108); 52,113 acres

8/29 am 6 hour VIIRS IR as Ignition

8/29 selected fireline & N. and S. Fk Kings R. as Barrier

8/28 @1745 Cobra Perim Masked as non-burnable

Roads

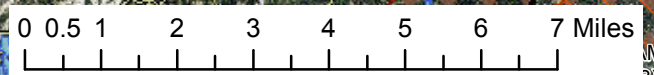
- Highways
- Major Roads
- Other Roads

Ownership

- National Forest
- Non-National Forest

Other

- 1980-2014 Fires (>1,000 ac)
- Existing Wilderness



1:160,000

For more information about WFDSS:
https://wfdss.usgs.gov/wfdss/wfdss_home.shtml

R5 Fire and Aviation Management
 Fire Behavior Branch, Predictive Services
 McClellan, CA

with support from:
 Wildland Fire
 Decision Support System
 &
 Rocky Mtn. Research Station

Note: Projection based on preliminary data
 Mapped by: Don Yasuda