

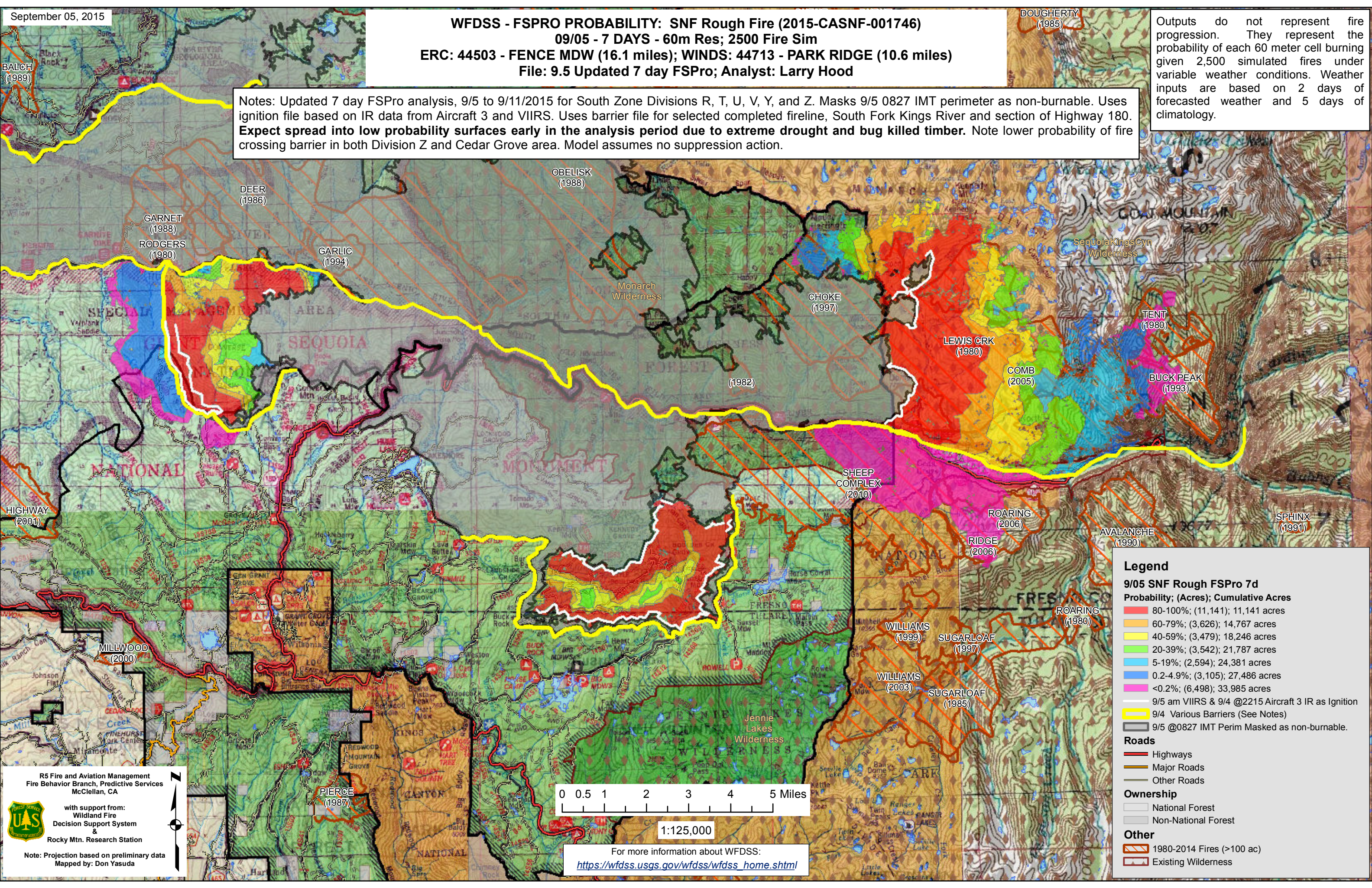
September 05, 2015

**WFDSS - FSPRO PROBABILITY: SNF Rough Fire (2015-CASN-001746)**  
**09/05 - 7 DAYS - 60m Res; 2500 Fire Sim**  
**ERC: 44503 - FENCE MDW (16.1 miles); WINDS: 44713 - PARK RIDGE (10.6 miles)**  
**File: 9.5 Updated 7 day FSPro; Analyst: Larry Hood**

DOUGHERTY (1985)

Outputs do not represent fire progression. They represent the probability of each 60 meter cell burning given 2,500 simulated fires under variable weather conditions. Weather inputs are based on 2 days of forecasted weather and 5 days of climatology.

Notes: Updated 7 day FSPro analysis, 9/5 to 9/11/2015 for South Zone Divisions R, T, U, V, Y, and Z. Masks 9/5 0827 IMT perimeter as non-burnable. Uses ignition file based on IR data from Aircraft 3 and VIIRS. Uses barrier file for selected completed fireline, South Fork Kings River and section of Highway 180. **Expect spread into low probability surfaces early in the analysis period due to extreme drought and bug killed timber.** Note lower probability of fire crossing barrier in both Division Z and Cedar Grove area. Model assumes no suppression action.



**Legend**

**9/05 SNF Rough FSPro 7d**

**Probability; (Acres); Cumulative Acres**

- 80-100%; (11,141); 11,141 acres
- 60-79%; (3,626); 14,767 acres
- 40-59%; (3,479); 18,246 acres
- 20-39%; (3,542); 21,787 acres
- 5-19%; (2,594); 24,381 acres
- 0.2-4.9%; (3,105); 27,486 acres
- <0.2%; (6,498); 33,985 acres

9/5 am VIIRS & 9/4 @2215 Aircraft 3 IR as Ignition

9/4 Various Barriers (See Notes)

9/5 @0827 IMT Perim Masked as non-burnable.

**Roads**

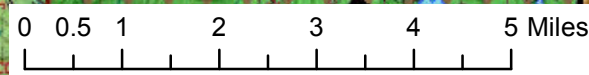
- Highways
- Major Roads
- Other Roads

**Ownership**

- National Forest
- Non-National Forest

**Other**

- 1980-2014 Fires (>100 ac)
- Existing Wilderness



1:125,000

For more information about WFDSS:  
[https://wfdss.usgs.gov/wfdss/wfdss\\_home.shtml](https://wfdss.usgs.gov/wfdss/wfdss_home.shtml)

R5 Fire and Aviation Management  
 Fire Behavior Branch, Predictive Services  
 McClellan, CA

with support from:  
 Wildland Fire  
 Decision Support System  
 &  
 Rocky Mtn. Research Station

Note: Projection based on preliminary data  
 Mapped by: Don Yasuda