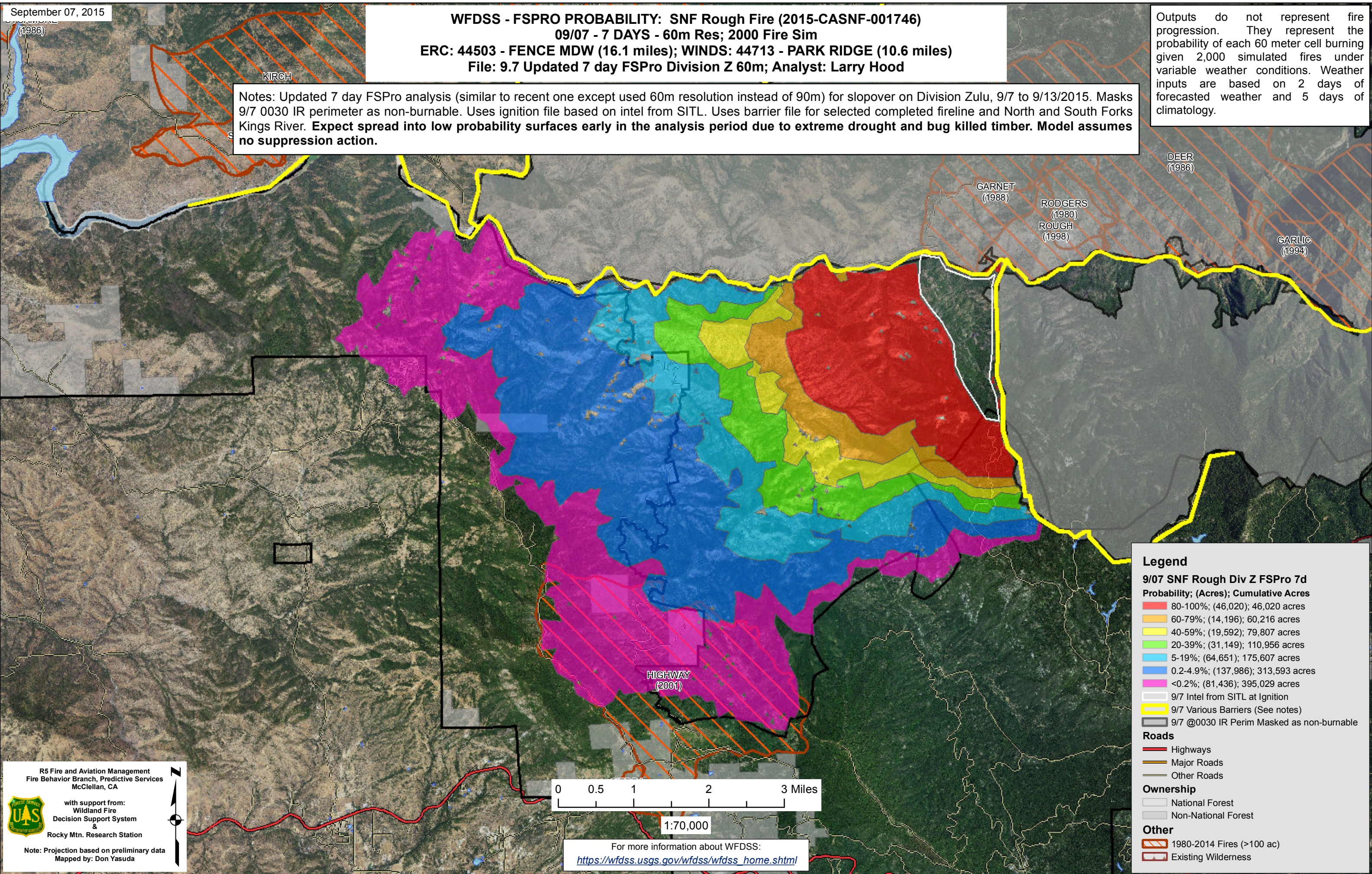


September 07, 2015

**WFDSS - FSPRO PROBABILITY: SNF Rough Fire (2015-CASN-001746)**  
**09/07 - 7 DAYS - 60m Res; 2000 Fire Sim**  
**ERC: 44503 - FENCE MDW (16.1 miles); WINDS: 44713 - PARK RIDGE (10.6 miles)**  
**File: 9.7 Updated 7 day FSPRO Division Z 60m; Analyst: Larry Hood**

Outputs do not represent fire progression. They represent the probability of each 60 meter cell burning given 2,000 simulated fires under variable weather conditions. Weather inputs are based on 2 days of forecasted weather and 5 days of climatology.

Notes: Updated 7 day FSPRO analysis (similar to recent one except used 60m resolution instead of 90m) for slopover on Division Zulu, 9/7 to 9/13/2015. Masks 9/7 0030 IR perimeter as non-burnable. Uses ignition file based on intel from SITL. Uses barrier file for selected completed fireline and North and South Forks Kings River. **Expect spread into low probability surfaces early in the analysis period due to extreme drought and bug killed timber. Model assumes no suppression action.**



**Legend**

**9/07 SNF Rough Div Z FSPRO 7d**  
**Probability; (Acres); Cumulative Acres**

- 80-100%; (46,020); 46,020 acres
- 60-79%; (14,196); 60,216 acres
- 40-59%; (19,592); 79,807 acres
- 20-39%; (31,149); 110,956 acres
- 5-19%; (64,651); 175,607 acres
- 0.2-4.9%; (137,986); 313,593 acres
- <0.2%; (81,436); 395,029 acres

- 9/7 Intel from SITL at Ignition
- 9/7 Various Barriers (See notes)
- 9/7 @0030 IR Perim Masked as non-burnable

**Roads**

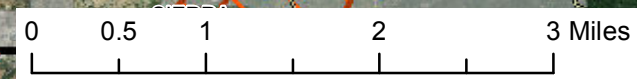
- Highways
- Major Roads
- Other Roads

**Ownership**

- National Forest
- Non-National Forest

**Other**

- 1980-2014 Fires (>100 ac)
- Existing Wilderness



1:70,000

For more information about WFDSS:  
[https://wfdss.usgs.gov/wfdss/wfdss\\_home.shtml](https://wfdss.usgs.gov/wfdss/wfdss_home.shtml)

R5 Fire and Aviation Management  
 Fire Behavior Branch, Predictive Services  
 McClellan, CA

with support from:  
 Wildland Fire  
 Decision Support System  
 &  
 Rocky Mtn. Research Station

Note: Projection based on preliminary data  
 Mapped by: Don Yasuda