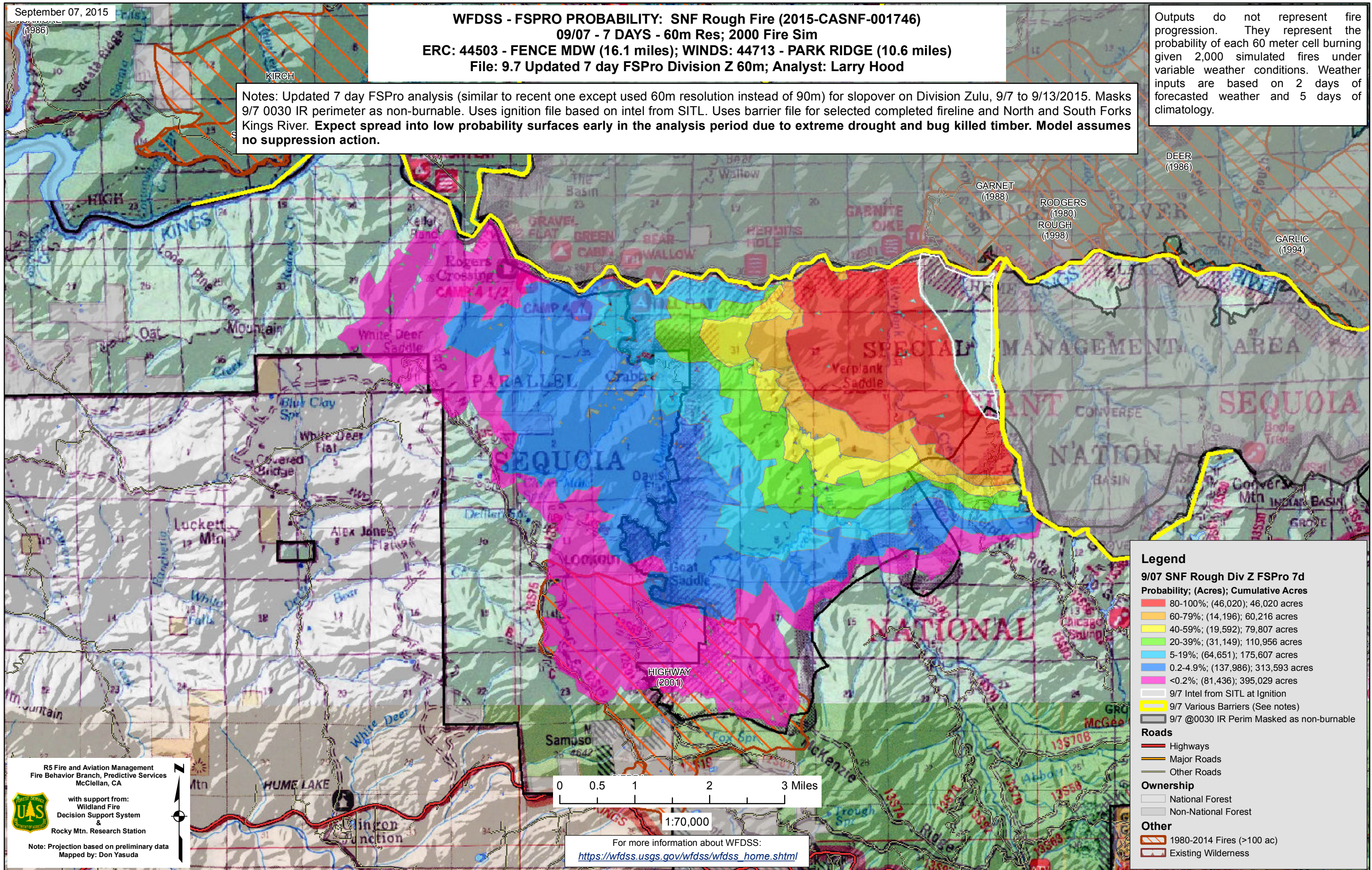


September 07, 2015

WFDSS - FSPRO PROBABILITY: SNF Rough Fire (2015-CASN-001746)
09/07 - 7 DAYS - 60m Res; 2000 Fire Sim
ERC: 44503 - FENCE MDW (16.1 miles); WINDS: 44713 - PARK RIDGE (10.6 miles)
File: 9.7 Updated 7 day FSPro Division Z 60m; Analyst: Larry Hood

Outputs do not represent fire progression. They represent the probability of each 60 meter cell burning given 2,000 simulated fires under variable weather conditions. Weather inputs are based on 2 days of forecasted weather and 5 days of climatology.

Notes: Updated 7 day FSPro analysis (similar to recent one except used 60m resolution instead of 90m) for slopover on Division Zulu, 9/7 to 9/13/2015. Masks 9/7 0030 IR perimeter as non-burnable. Uses ignition file based on intel from SITL. Uses barrier file for selected completed fireline and North and South Forks Kings River. Expect spread into low probability surfaces early in the analysis period due to extreme drought and bug killed timber. Model assumes no suppression action.



Legend

9/07 SNF Rough Div Z FSPro 7d

Probability; (Acres); Cumulative Acres

- 80-100%; (46,020); 46,020 acres
- 60-79%; (14,196); 60,216 acres
- 40-59%; (19,592); 79,807 acres
- 20-39%; (31,149); 110,956 acres
- 5-19%; (64,651); 175,607 acres
- 0.2-4.9%; (137,986); 313,593 acres
- <0.2%; (81,436); 395,029 acres

- 9/7 Intel from SITL at Ignition
- 9/7 Various Barriers (See notes)
- 9/7 @0030 IR Perim Masked as non-burnable

Roads

- Highways
- Major Roads
- Other Roads

Ownership

- National Forest
- Non-National Forest

Other

- 1980-2014 Fires (>100 ac)
- Existing Wilderness

R5 Fire and Aviation Management
 Fire Behavior Branch, Predictive Services
 McClellan, CA

with support from:
 Wildland Fire
 Decision Support System
 &
 Rocky Mtn. Research Station

Note: Projection based on preliminary data
 Mapped by: Don Yasuda

1:70,000

For more information about WFDSS:
https://wfdss.usgs.gov/wfdss/wfdss_home.shtml