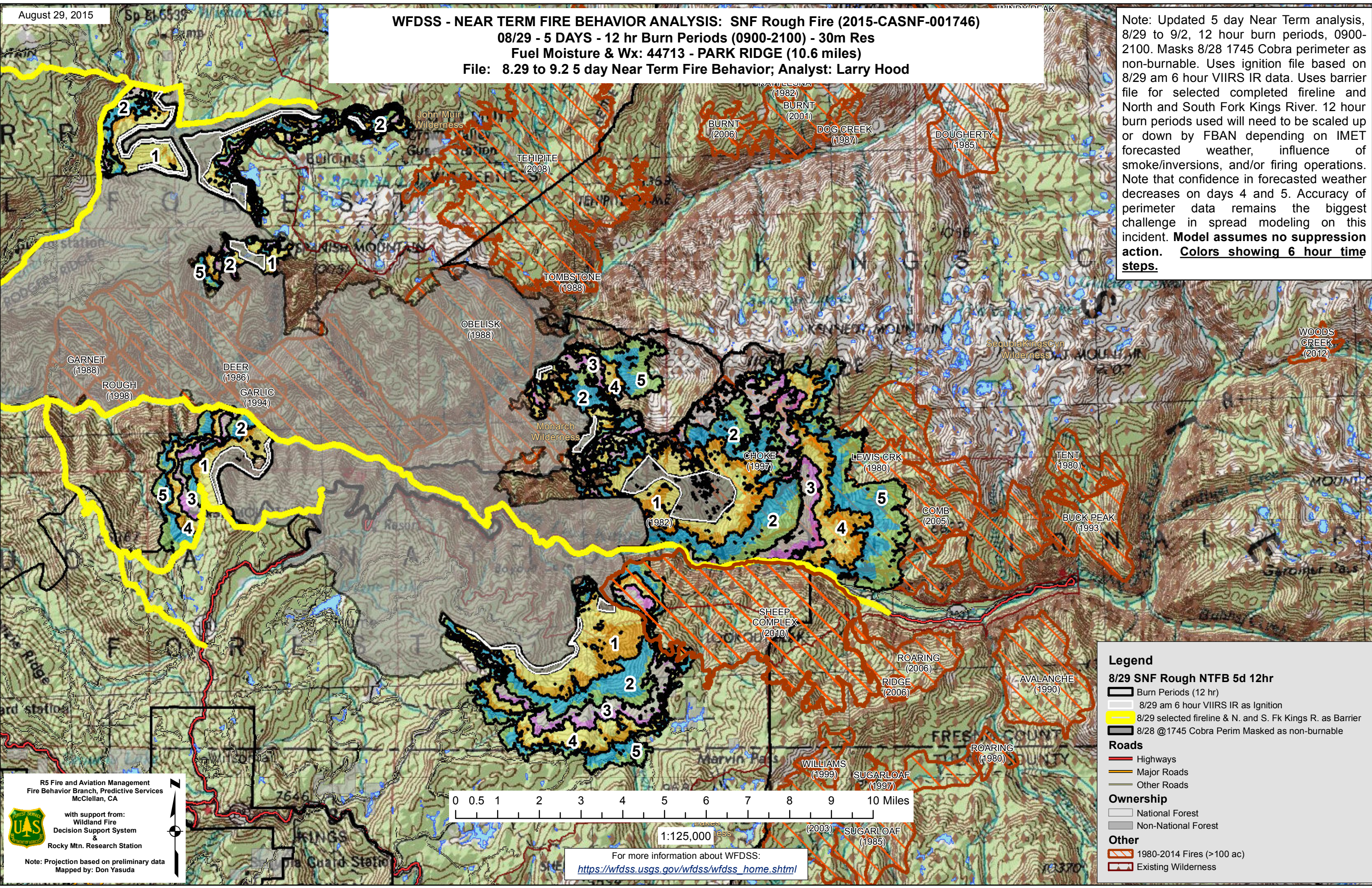


**WFDSS - NEAR TERM FIRE BEHAVIOR ANALYSIS: SNF Rough Fire (2015-CASNF-001746)**  
**08/29 - 5 DAYS - 12 hr Burn Periods (0900-2100) - 30m Res**  
**Fuel Moisture & Wx: 44713 - PARK RIDGE (10.6 miles)**  
**File: 8.29 to 9.2 5 day Near Term Fire Behavior; Analyst: Larry Hood**

Note: Updated 5 day Near Term analysis, 8/29 to 9/2, 12 hour burn periods, 0900-2100. Masks 8/28 1745 Cobra perimeter as non-burnable. Uses ignition file based on 8/29 am 6 hour VIIRS IR data. Uses barrier file for selected completed fireline and North and South Fork Kings River. 12 hour burn periods used will need to be scaled up or down by FBAN depending on IMET forecasted weather, influence of smoke/inversions, and/or firing operations. Note that confidence in forecasted weather decreases on days 4 and 5. Accuracy of perimeter data remains the biggest challenge in spread modeling on this incident. **Model assumes no suppression action.** Colors showing 6 hour time steps.



**Legend**

**8/29 SNF Rough NTFB 5d 12hr**

- Burn Periods (12 hr)
- 8/29 am 6 hour VIIRS IR as Ignition
- 8/29 selected fireline & N. and S. Fk Kings R. as Barrier
- 8/28 @1745 Cobra Perim Masked as non-burnable

**Roads**

- Highways
- Major Roads
- Other Roads

**Ownership**

- National Forest
- Non-National Forest

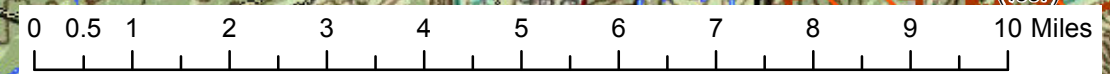
**Other**

- 1980-2014 Fires (>100 ac)
- Existing Wilderness

R5 Fire and Aviation Management  
 Fire Behavior Branch, Predictive Services  
 McClellan, CA

with support from:  
 Wildland Fire  
 Decision Support System &  
 Rocky Mtn. Research Station

Note: Projection based on preliminary data  
 Mapped by: Don Yasuda



For more information about WFDSS:  
[https://wfdss.usgs.gov/wfdss/wfdss\\_home.shtml](https://wfdss.usgs.gov/wfdss/wfdss_home.shtml)