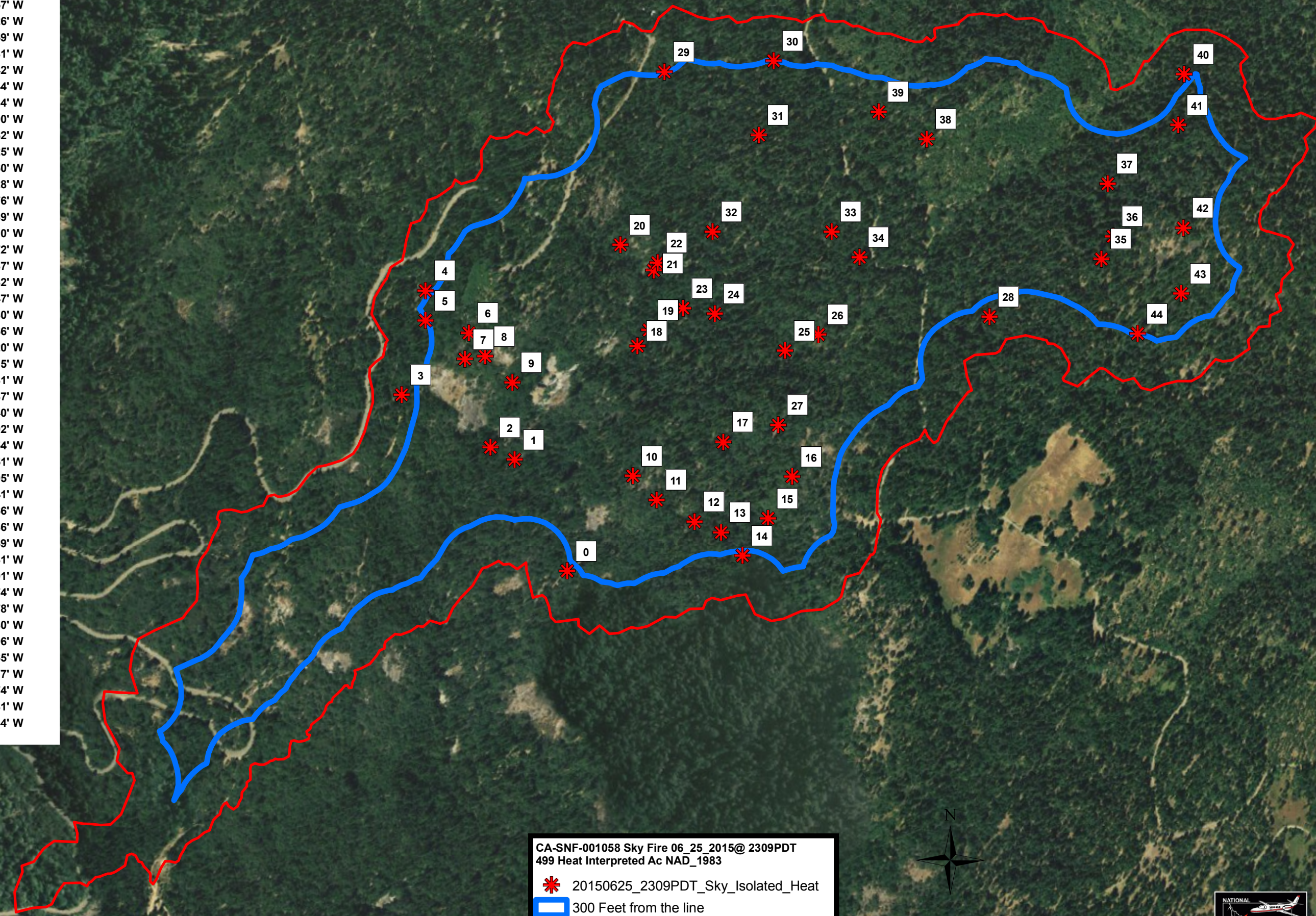


FID	Shape *	Y	X
0	Point	37° 23.502' N	119° 35.657' W
1	Point	37° 23.629' N	119° 35.726' W
2	Point	37° 23.644' N	119° 35.759' W
3	Point	37° 23.706' N	119° 35.881' W
4	Point	37° 23.822' N	119° 35.842' W
5	Point	37° 23.788' N	119° 35.844' W
6	Point	37° 23.773' N	119° 35.784' W
7	Point	37° 23.743' N	119° 35.790' W
8	Point	37° 23.746' N	119° 35.762' W
9	Point	37° 23.716' N	119° 35.725' W
10	Point	37° 23.606' N	119° 35.560' W
11	Point	37° 23.578' N	119° 35.528' W
12	Point	37° 23.552' N	119° 35.476' W
13	Point	37° 23.539' N	119° 35.439' W
14	Point	37° 23.512' N	119° 35.410' W
15	Point	37° 23.553' N	119° 35.372' W
16	Point	37° 23.598' N	119° 35.337' W
17	Point	37° 23.640' N	119° 35.432' W
18	Point	37° 23.751' N	119° 35.547' W
19	Point	37° 23.769' N	119° 35.530' W
20	Point	37° 23.865' N	119° 35.566' W
21	Point	37° 23.836' N	119° 35.520' W
22	Point	37° 23.844' N	119° 35.515' W
23	Point	37° 23.792' N	119° 35.481' W
24	Point	37° 23.784' N	119° 35.437' W
25	Point	37° 23.740' N	119° 35.340' W
26	Point	37° 23.757' N	119° 35.292' W
27	Point	37° 23.657' N	119° 35.354' W
28	Point	37° 23.770' N	119° 35.051' W
29	Point	37° 24.058' N	119° 35.495' W
30	Point	37° 24.066' N	119° 35.341' W
31	Point	37° 23.983' N	119° 35.366' W
32	Point	37° 23.876' N	119° 35.436' W
33	Point	37° 23.872' N	119° 35.269' W
34	Point	37° 23.842' N	119° 35.231' W
35	Point	37° 23.830' N	119° 34.891' W
36	Point	37° 23.855' N	119° 34.874' W
37	Point	37° 23.914' N	119° 34.878' W
38	Point	37° 23.972' N	119° 35.130' W
39	Point	37° 24.004' N	119° 35.196' W
40	Point	37° 24.034' N	119° 34.765' W
41	Point	37° 23.977' N	119° 34.777' W
42	Point	37° 23.862' N	119° 34.774' W
43	Point	37° 23.788' N	119° 34.781' W
44	Point	37° 23.745' N	119° 34.844' W



0.00.06 0.12 0.18 0.24
Miles

CA-SNF-001058 Sky Fire 06_25_2015@ 2309PDT
499 Heat Interpreted Ac NAD_1983

- 20150625_2309PDT_Sky_Isolated_Heat
- 300 Feet from the line
- 20150621_2341PDT_Sky_Heat_Perimeter

C.L.Bloxham IRIN

