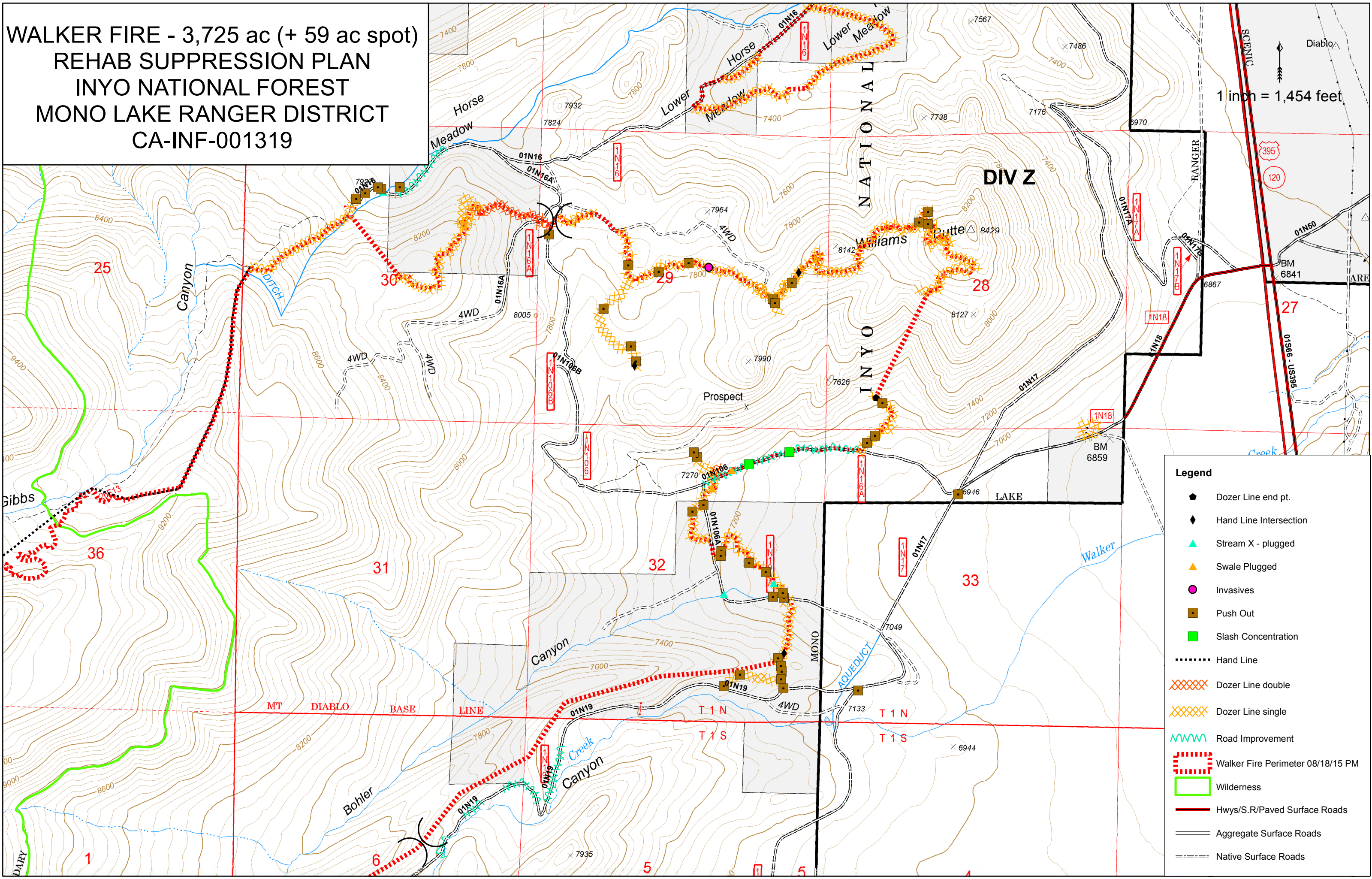


**WALKER FIRE - 3,725 ac (+ 59 ac spot)
 REHAB SUPPRESSION PLAN
 INYO NATIONAL FOREST
 MONO LAKE RANGER DISTRICT
 CA-INF-001319**

1 inch = 1,454 feet



- Legend**
- ◆ Dozer Line end pt.
 - ◆ Hand Line Intersection
 - ▲ Stream X - plugged
 - ▲ Swale Plugged
 - Invasives
 - Push Out
 - Slash Concentration
 - Hand Line
 - XXXX Dozer Line double
 - XXXX Dozer Line single
 - ▲▲▲ Road Improvement
 - ▬ Walker Fire Perimeter 08/18/15 PM
 - ▬ Wilderness
 - ▬ Hwys/S.R/Paved Surface Roads
 - ▬ Aggregate Surface Roads
 - ▬ Native Surface Roads