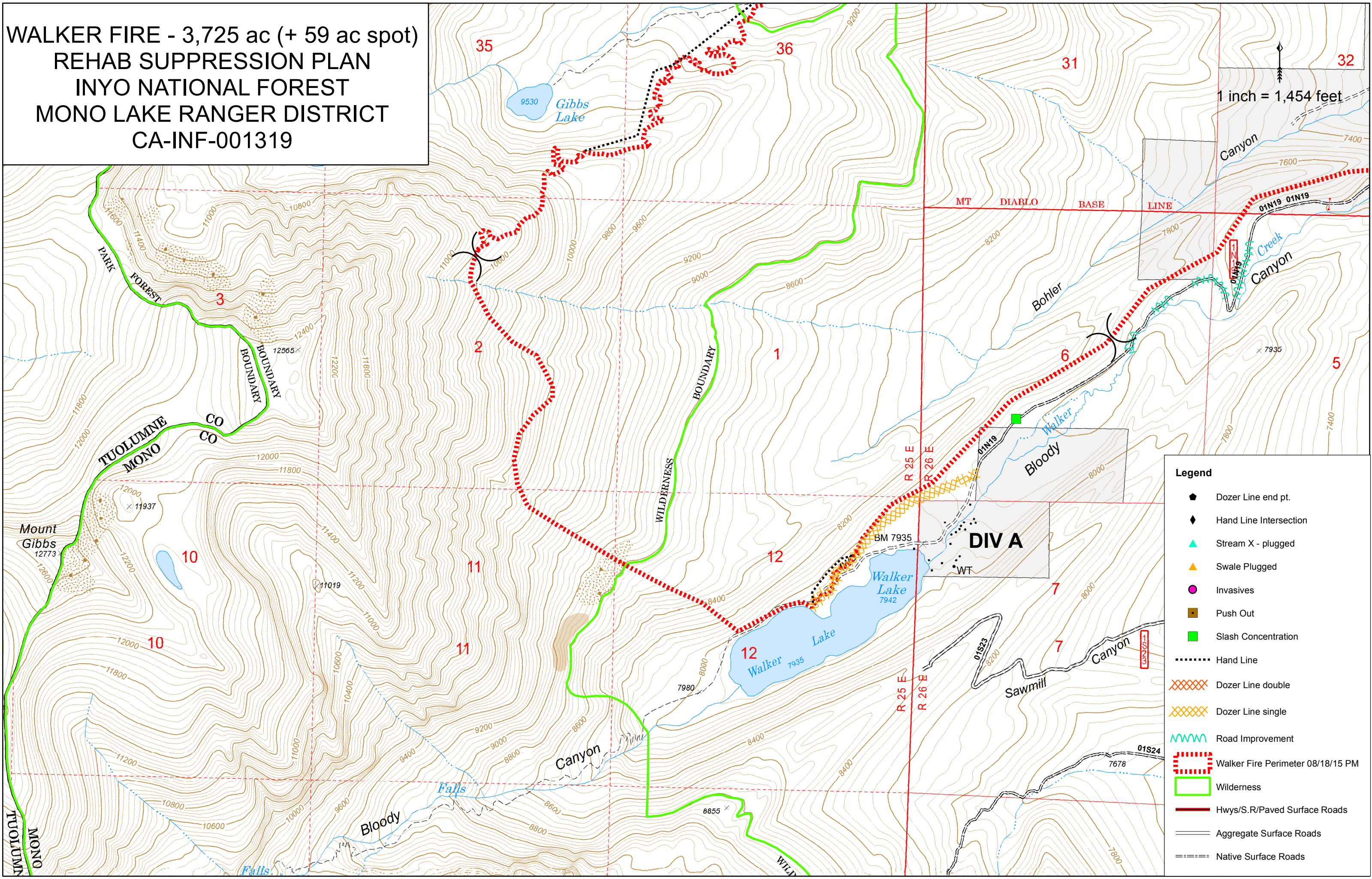


**WALKER FIRE - 3,725 ac (+ 59 ac spot)
 REHAB SUPPRESSION PLAN
 INYO NATIONAL FOREST
 MONO LAKE RANGER DISTRICT
 CA-INF-001319**



1 inch = 1,454 feet

- Legend**
- ◆ Dozer Line end pt.
 - ◆ Hand Line Intersection
 - ▲ Stream X - plugged
 - ▲ Swale Plugged
 - Invasives
 - Push Out
 - Slash Concentration
 - Hand Line
 - ▣ Dozer Line double
 - ▣ Dozer Line single
 - ~ Road Improvement
 - ▣ Walker Fire Perimeter 08/18/15 PM
 - ▣ Wilderness
 - ▣ Hwys/S.R/Paved Surface Roads
 - ▣ Aggregate Surface Roads
 - ▣ Native Surface Roads