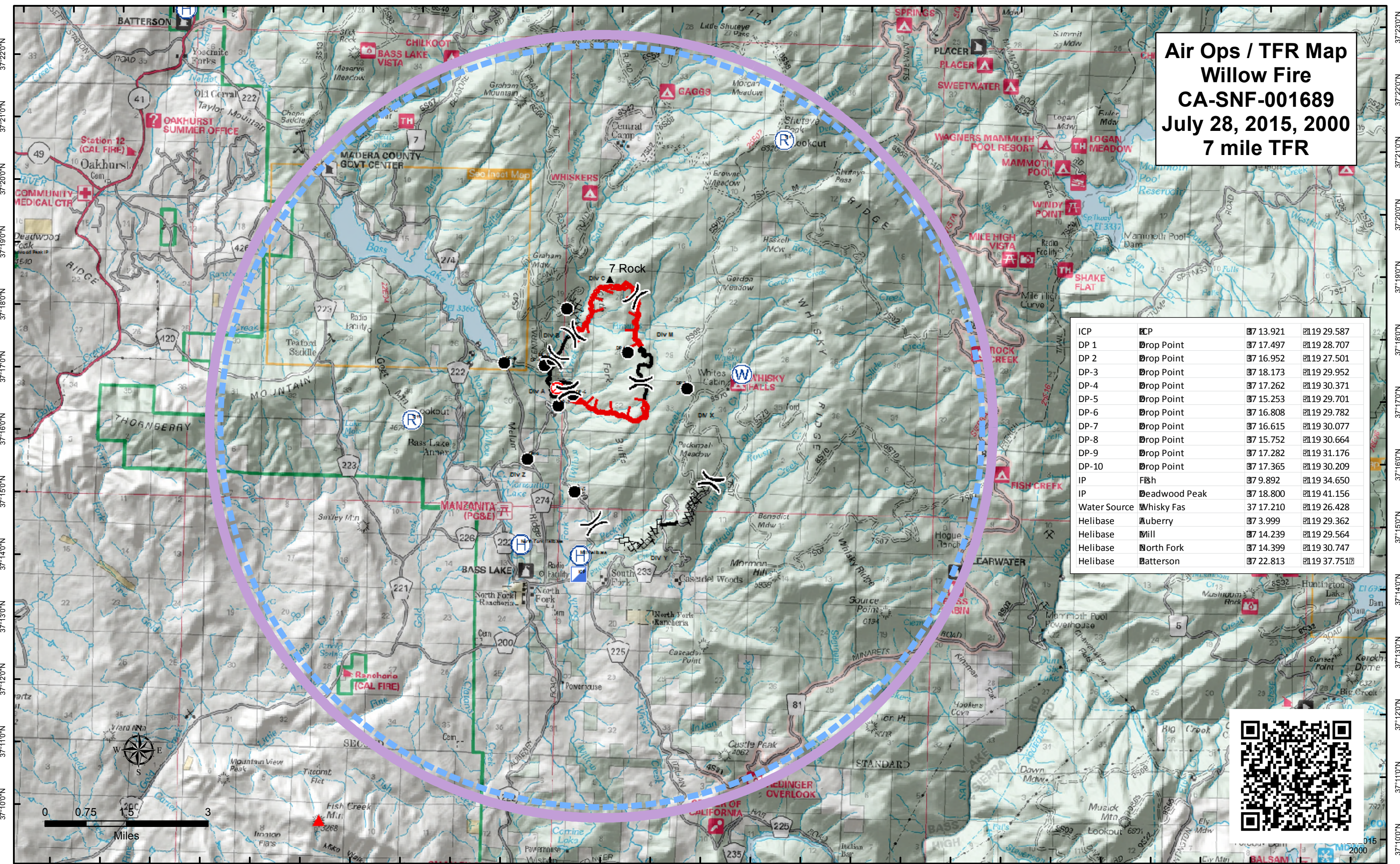


119°41'0"W 119°40'0"W 119°39'0"W 119°38'0"W 119°37'0"W 119°36'0"W 119°35'0"W 119°34'0"W 119°33'0"W 119°32'0"W 119°31'0"W 119°30'0"W 119°29'0"W 119°28'0"W 119°27'0"W 119°26'0"W 119°25'0"W 119°24'0"W 119°23'0"W 119°22'0"W 119°21'0"W 119°20'0"W 119°19'0"W 119°18'0"W 119°17'0"W 119°16'0"W 119°15'0"W 119°14'0"W

Air Ops / TFR Map
Willow Fire
CA-SNF-001689
July 28, 2015, 2000
7 mile TFR



ICP	ICP	7 13.921	19 29.587
DP 1	Drop Point	7 17.497	19 28.707
DP 2	Drop Point	7 16.952	19 27.501
DP-3	Drop Point	7 18.173	19 29.952
DP-4	Drop Point	7 17.262	19 30.371
DP-5	Drop Point	7 15.253	19 29.701
DP-6	Drop Point	7 16.808	19 29.782
DP-7	Drop Point	7 16.615	19 30.077
DP-8	Drop Point	7 15.752	19 30.664
DP-9	Drop Point	7 17.282	19 31.176
DP-10	Drop Point	7 17.365	19 30.209
IP	Fish	7 9.892	19 34.650
IP	Deadwood Peak	7 18.800	19 41.156
Water Source	Whisky Fas	37 17.210	19 26.428
Helibase	Auberry	7 3.999	19 29.362
Helibase	Mill	7 14.239	19 29.564
Helibase	North Fork	7 14.399	19 30.747
Helibase	Batterson	7 22.813	19 37.751



119°40'0"W 119°39'0"W 119°38'0"W 119°37'0"W 119°36'0"W 119°35'0"W 119°34'0"W 119°33'0"W 119°32'0"W 119°31'0"W 119°30'0"W 119°29'0"W 119°28'0"W 119°27'0"W 119°26'0"W 119°25'0"W 119°24'0"W 119°23'0"W 119°22'0"W 119°21'0"W 119°20'0"W 119°19'0"W 119°18'0"W 119°17'0"W 119°16'0"W 119°15'0"W 119°14'0"W