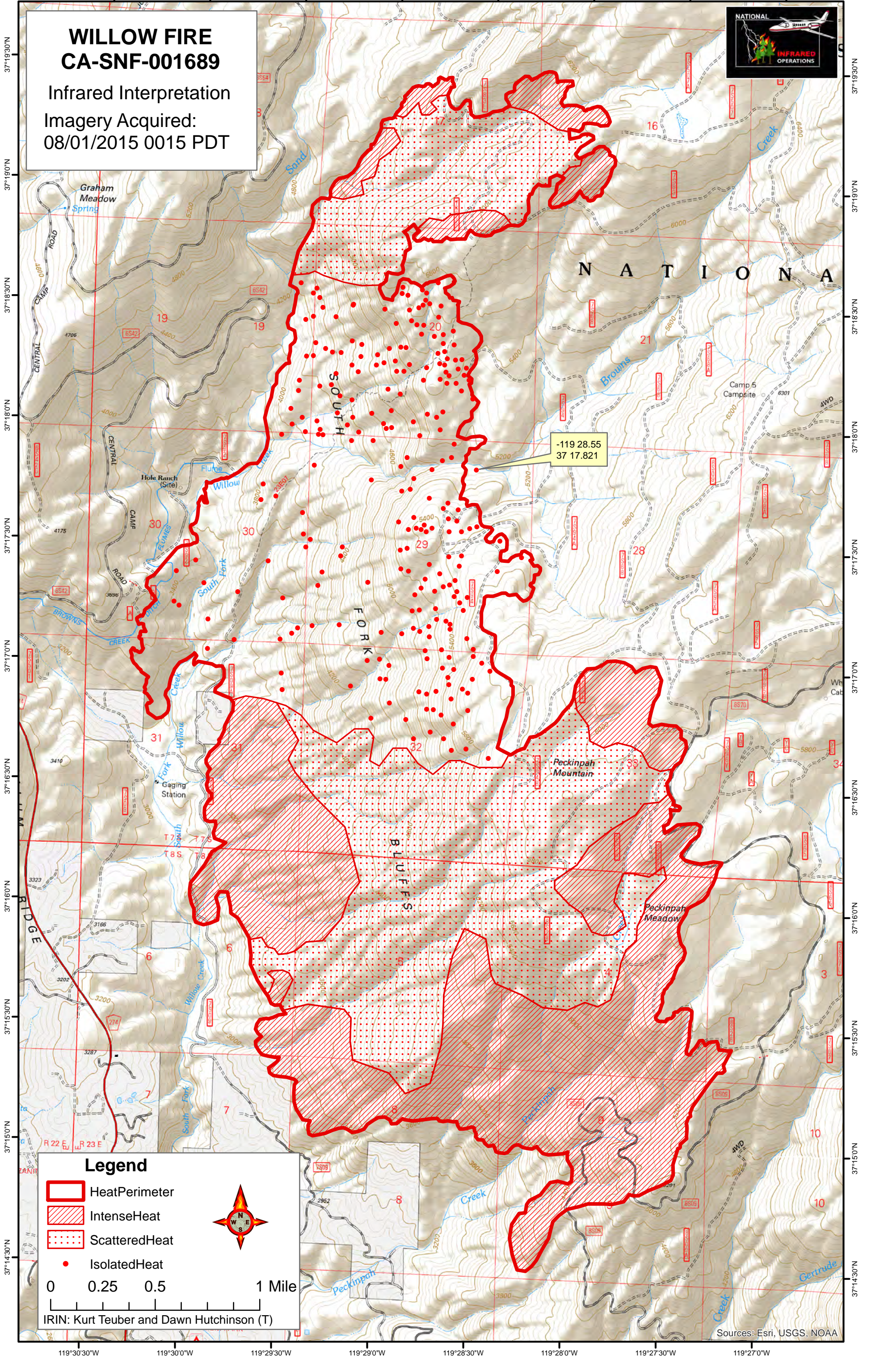


119°30'30"W 119°30'0"W 119°29'30"W 119°29'0"W 119°28'30"W 119°28'0"W 119°27'30"W 119°27'0"W



WILLOW FIRE
CA-SNF-001689
Infrared Interpretation
Imagery Acquired:
08/01/2015 0015 PDT



-119 28.55
37 17.821

Legend

- HeatPerimeter
- IntenseHeat
- ScatteredHeat
- IsolatedHeat

0 0.25 0.5 1 Mile

IRIN: Kurt Teuber and Dawn Hutchinson (T)



Sources: Esri, USGS, NOAA

119°30'30"W 119°30'0"W 119°29'30"W 119°29'0"W 119°28'30"W 119°28'0"W 119°27'30"W 119°27'0"W