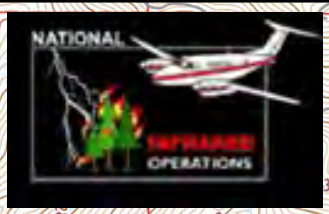
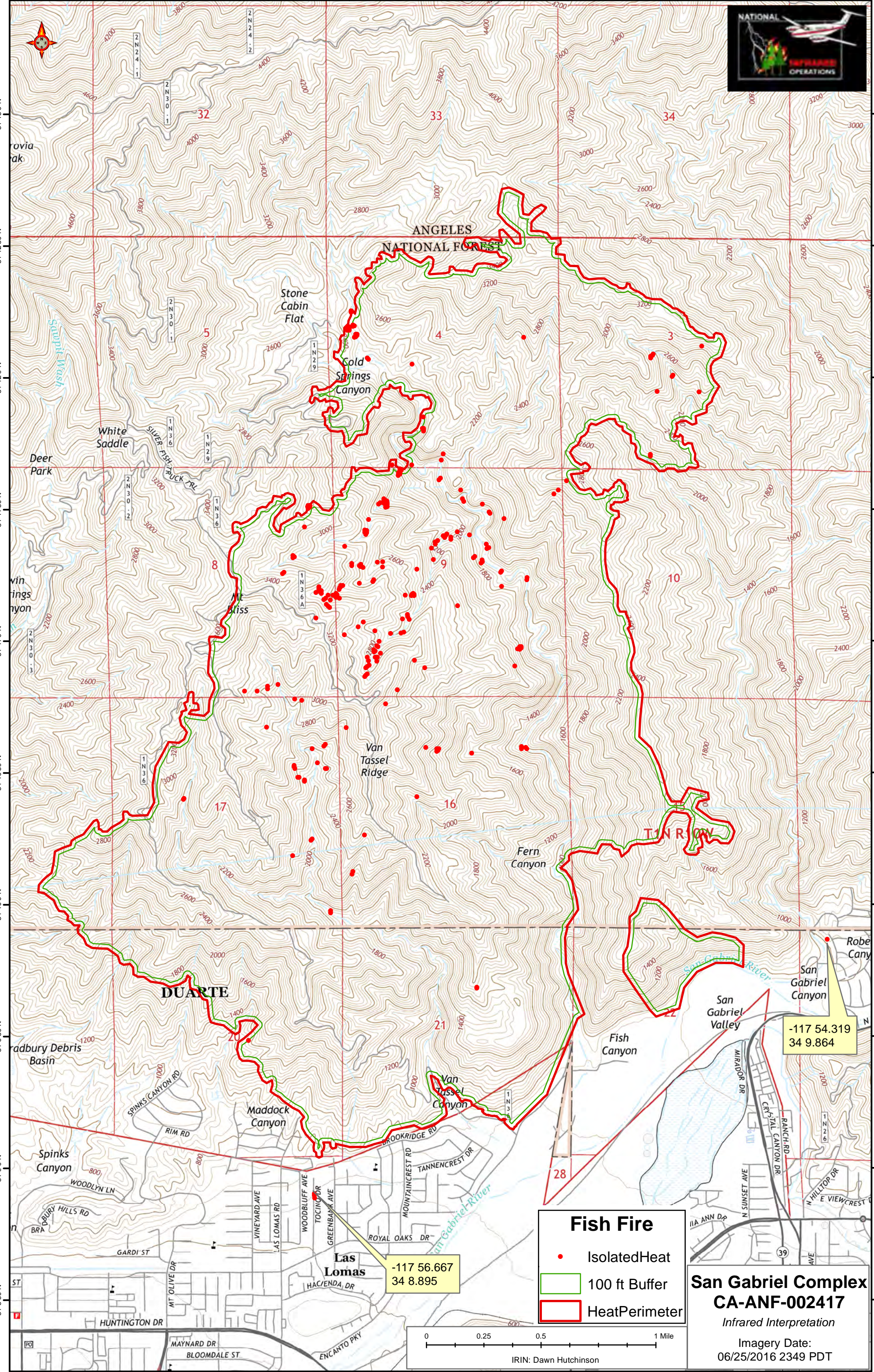


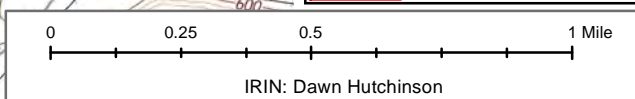
117°58'0"W 117°57'30"W 117°57'0"W 117°56'30"W 117°56'0"W 117°55'30"W 117°55'0"W 117°54'30"W



Fish Fire

- IsolatedHeat
- ▭ 100 ft Buffer
- ▭ HeatPerimeter

San Gabriel Complex
CA-ANF-002417
 Infrared Interpretation
 Imagery Date:
 06/25/2016 2349 PDT



117°58'0"W 117°57'30"W 117°57'0"W 117°56'30"W 117°56'0"W 117°55'30"W 117°55'0"W 117°54'30"W