

SAND INCIDENT
 JULY 26, 2016 0600 HRS
 CA-ANF-003008

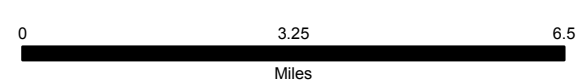
IAP MAP
 Index

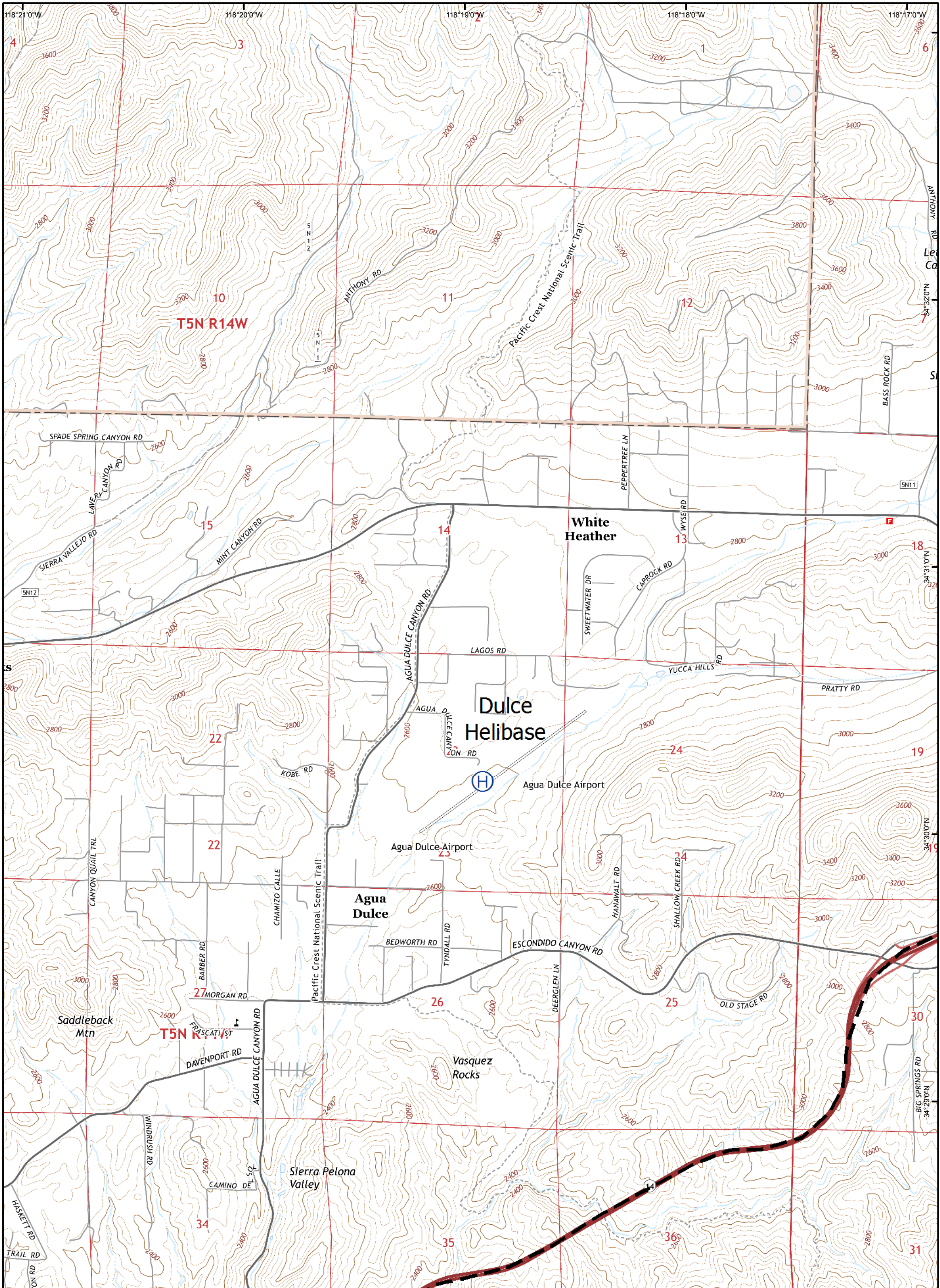
Legend

- Division
- Branch

- Uncontrolled Fire Edge
- Completed Line
- Proposed Dozer Line
- Planned Fire Line

- Repeater
- Camp
- Drop Point
- Helispot
- HeliBase
- Incident Command Post





SAND INCIDENT
 JULY 26, 2016 0600 HRS
 CA - ANF - 003008

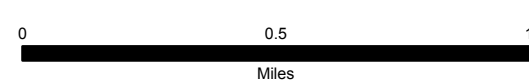
IAP MAP
 Page A3

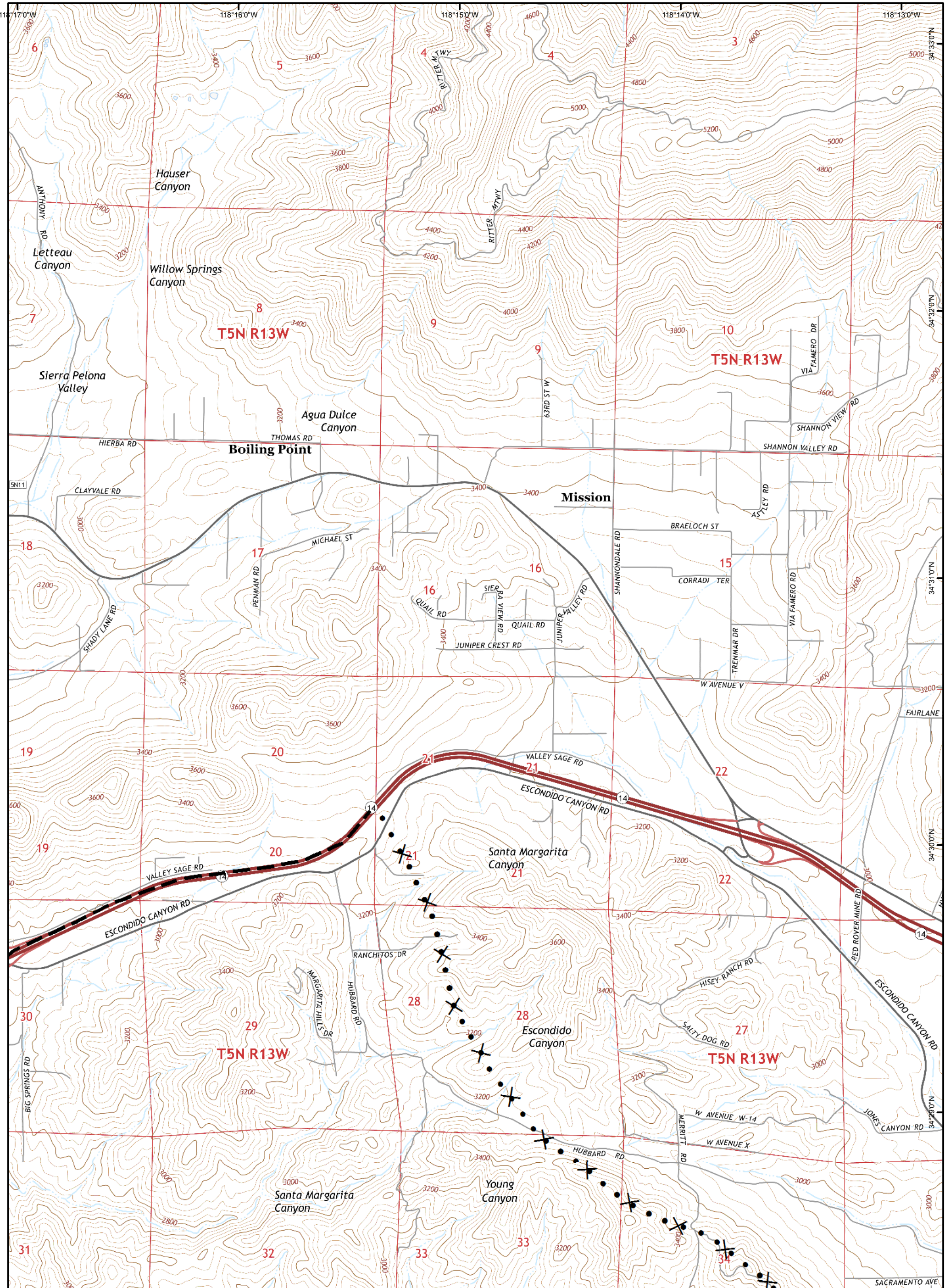
Legend

- Division
- Branch

- Uncontrolled Fire Edge
- Completed Line
- Proposed Dozer Line
- Planned Fire Line

- Repeater
- Camp
- Drop Point
- Helispot
- HeliBase
- Incident Command Post





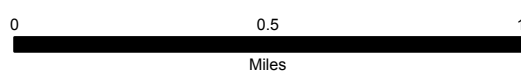
SAND INCIDENT
 JULY 26, 2016 0600 HRS
 CA - ANF - 003008

IAP MAP
 Page A4

Legend

- Division
- Branch
- Uncontrolled Fire Edge
- Completed Line
- Proposed Dozer Line
- Planned Fire Line

- Repeater
- Camp
- Drop Point
- Helispot
- HeliBase
- Incident Command Post





SAND INCIDENT
 JULY 26, 2016 0600 HRS
 CA - ANF - 003008

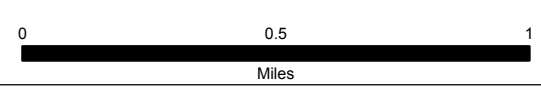
IAP MAP
 Page A5

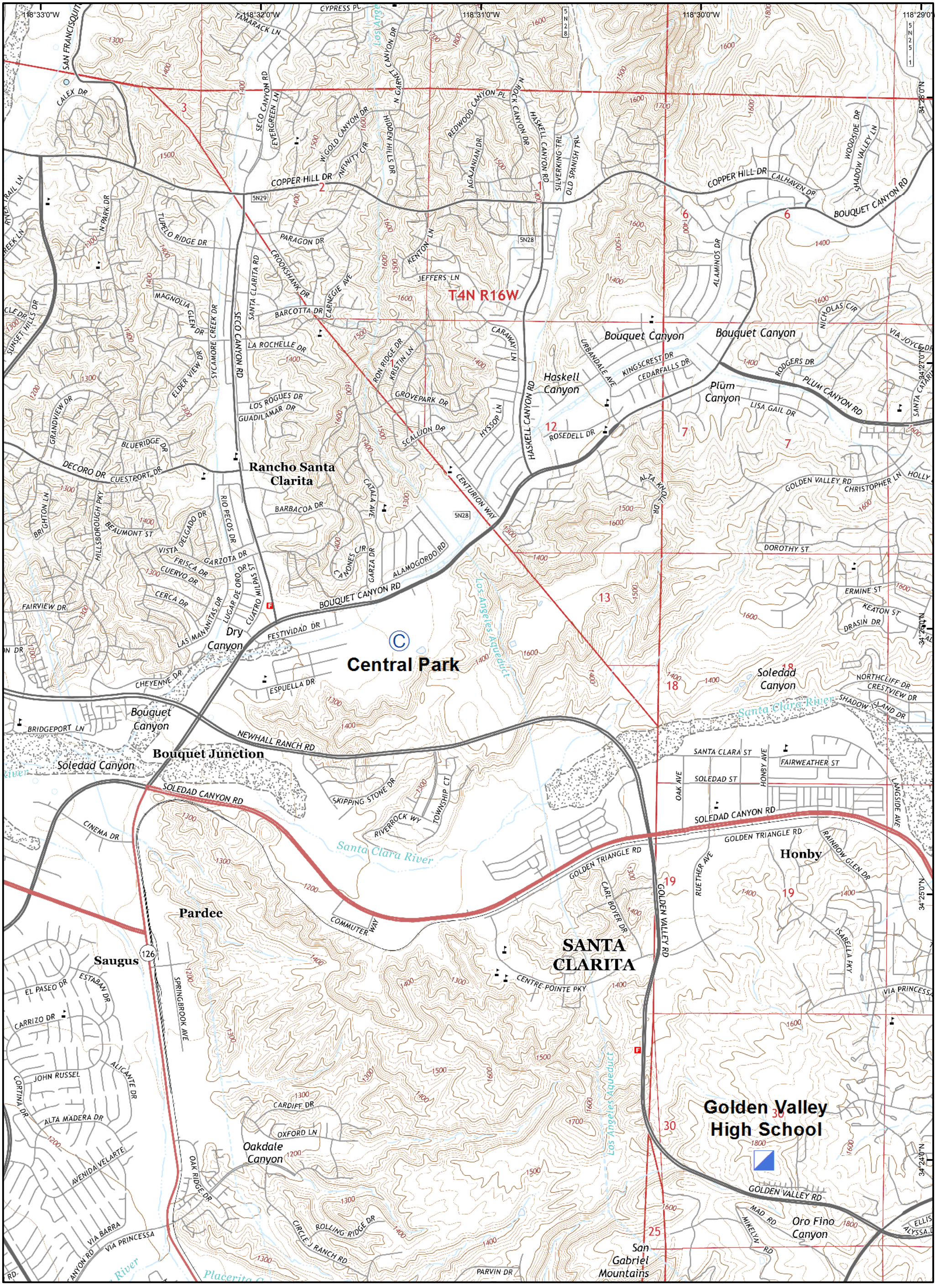
Legend

- Division
- Branch

- Uncontrolled Fire Edge
- Completed Line
- Proposed Dozer Line
- Planned Fire Line

- Repeater
- Camp
- Drop Point
- Helispot
- HeliBase
- Incident Command Post





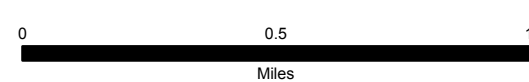
SAND INCIDENT
 JULY 26, 2016 0600 HRS
 CA - ANF - 003008

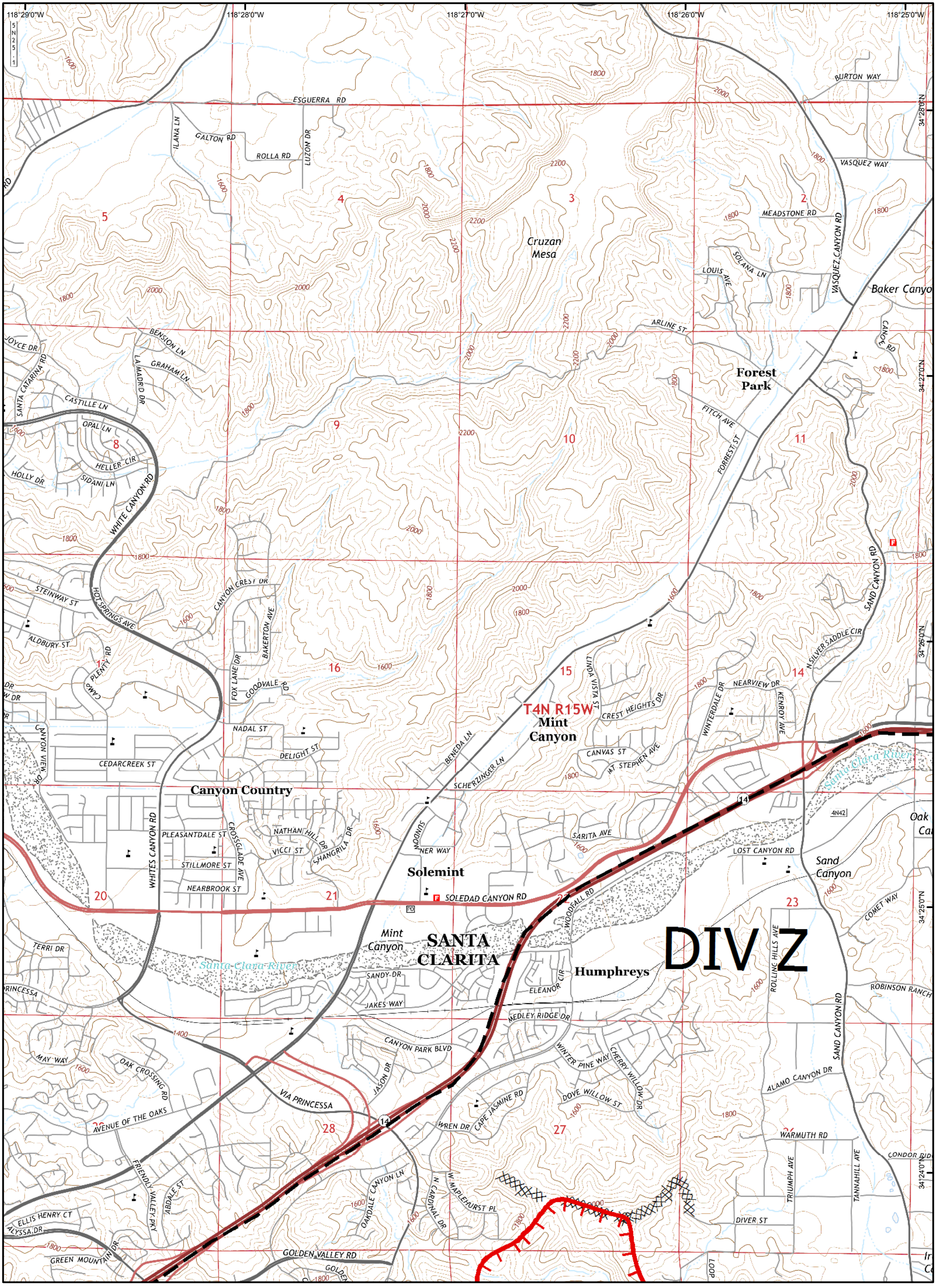
IAP MAP
 Page B0

Legend

- Uncontrolled Fire Edge
- Completed Line
- Proposed Dozer Line
- Planned Fire Line
- Division
- Branch

- Repeater
- Camp
- Drop Point
- Helispot
- HeliBase
- Incident Command Post





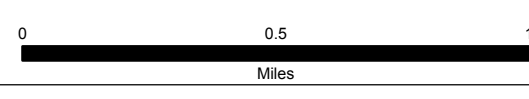
SAND INCIDENT
 JULY 26, 2016 0600 HRS
 CA - ANF - 003008

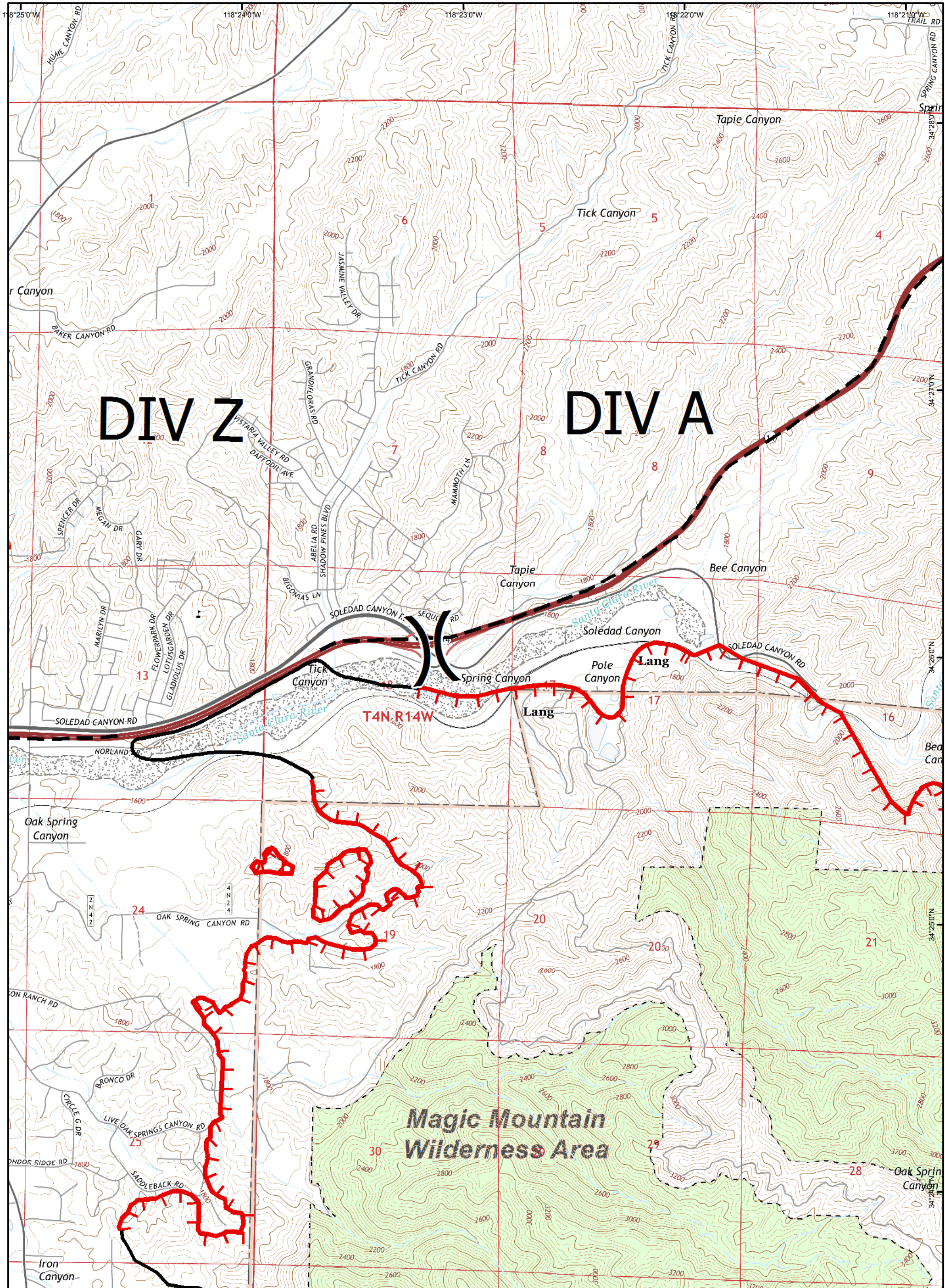
IAP MAP
 Page B1

Legend

- Division
- Branch
- Uncontrolled Fire Edge
- Completed Line
- Proposed Dozer Line
- Planned Fire Line

- Repeater
- Camp
- Drop Point
- Helispot
- HeliBase
- Incident Command Post





SAND INCIDENT
 JULY 26, 2016 0600 HRS
 CA - ANF - 003008

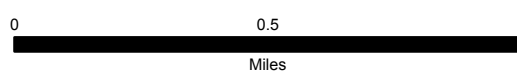
IAP MAP
 Page B2

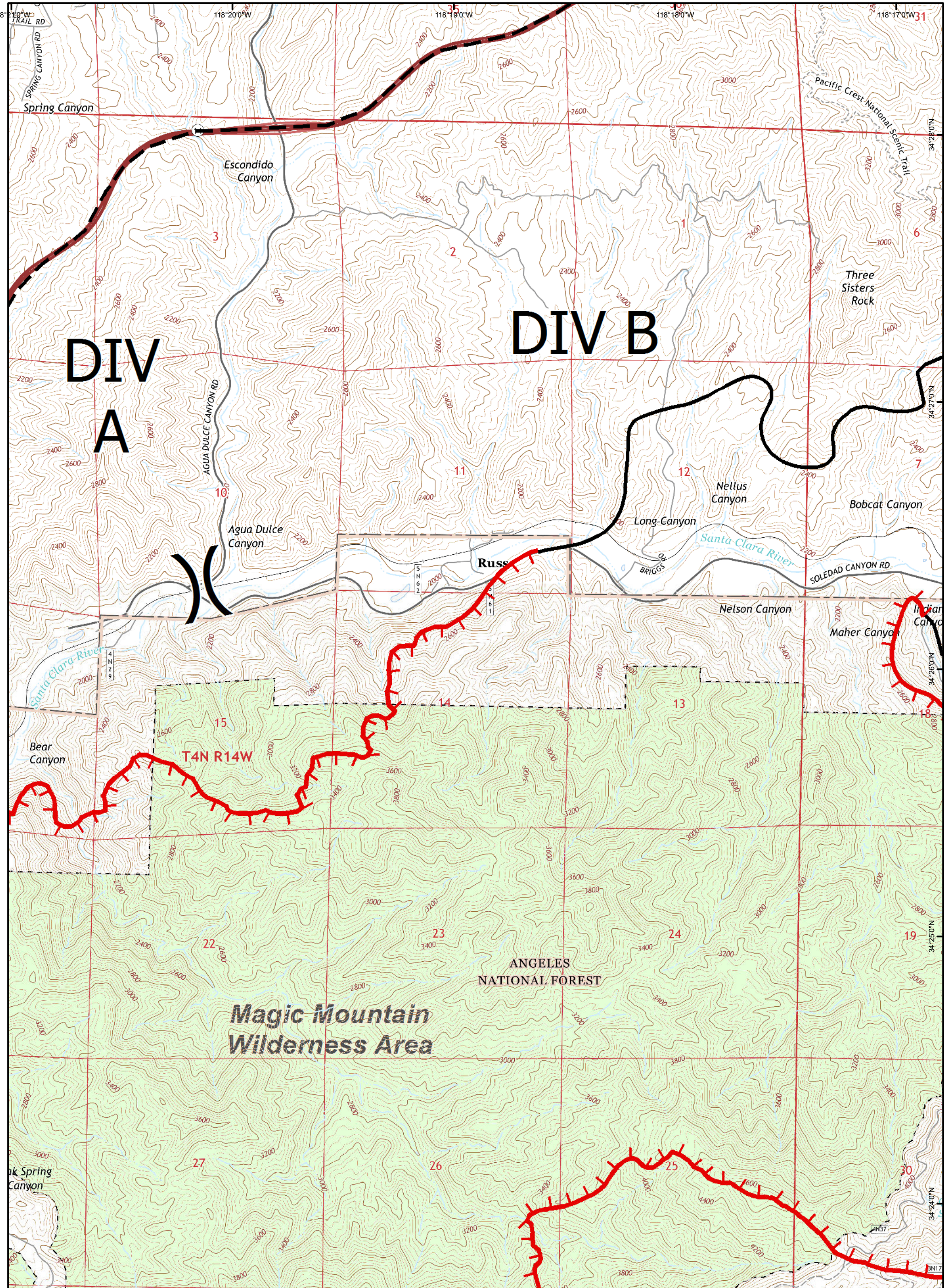
Legend

- Division
- Branch

- Uncontrolled Fire Edge
- Completed Line
- Proposed Dozer Line
- Planned Fire Line

- Repeater
- Camp
- Drop Point
- Helispot
- HeliBase
- Incident Command Post





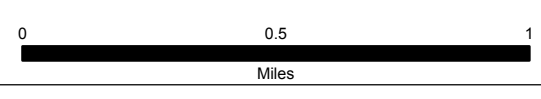
SAND INCIDENT
 JULY 26, 2016 0600 HRS
 CA - ANF - 003008

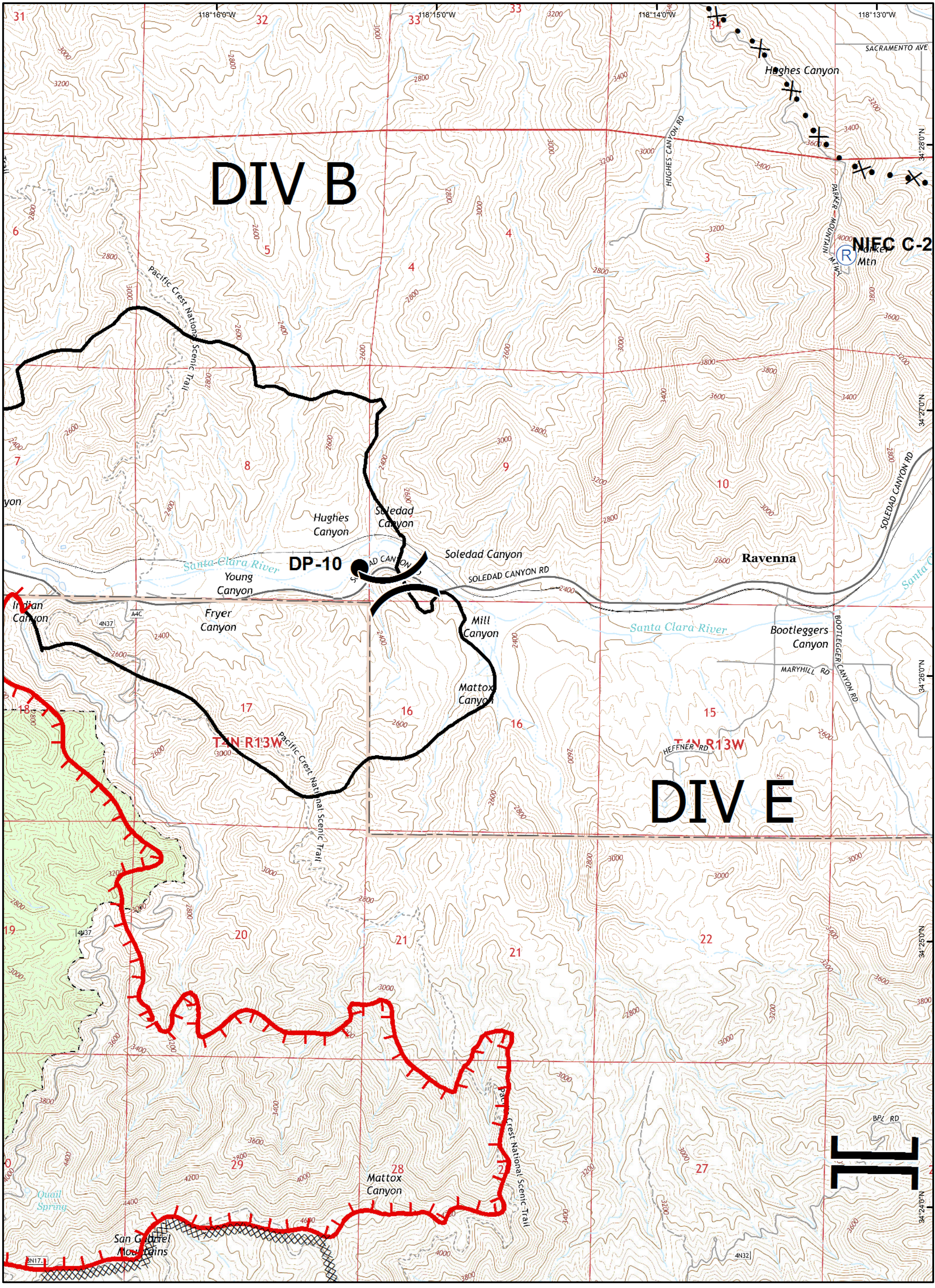
IAP MAP
 Page B3

Legend

- Division
- Branch
- Uncontrolled Fire Edge
- Completed Line
- Proposed Dozer Line
- Planned Fire Line

- Repeater
- Camp
- Drop Point
- Helispot
- HeliBase
- Incident Command Post





DIV B

DIV E

SAND INCIDENT
 JULY 26, 2016 0600 HRS
 CA - ANF - 003008

IAP MAP
 Page B4

Legend

Division

Branch

Uncontrolled Fire Edge

Completed Line

Proposed Dozer Line

Planned Fire Line

Repeater

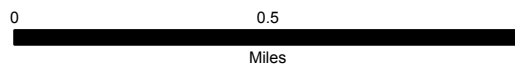
Camp

Drop Point

Helispot

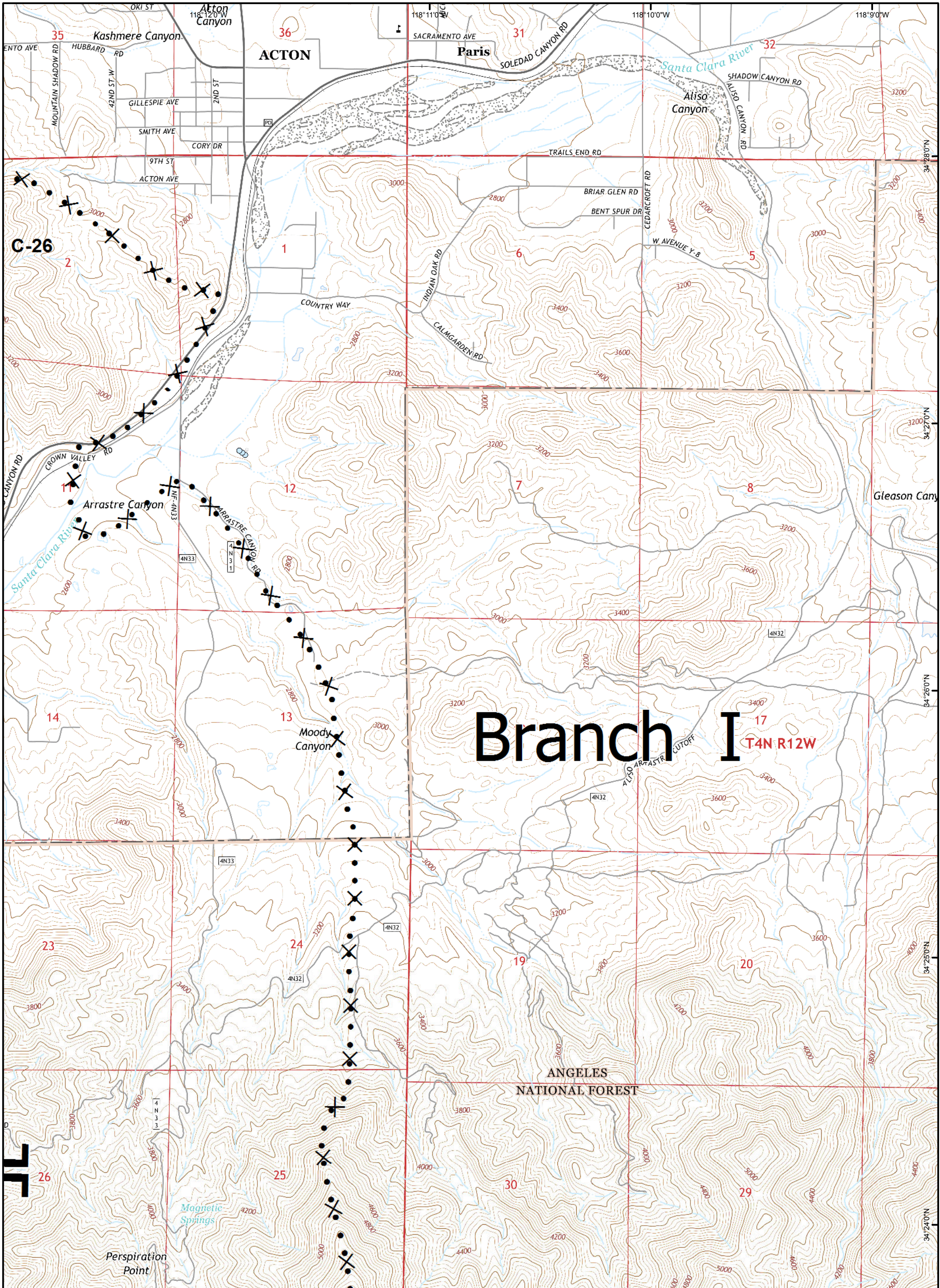
HeliBase

Incident Command Post



Datum; NAD83

GISS E. Lamas Team 3



SAND INCIDENT
 JULY 26, 2016 0600 HRS
 CA - ANF - 003008

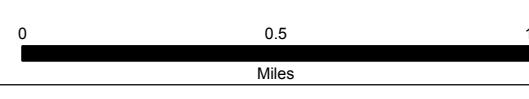
IAP MAP
 Page B5

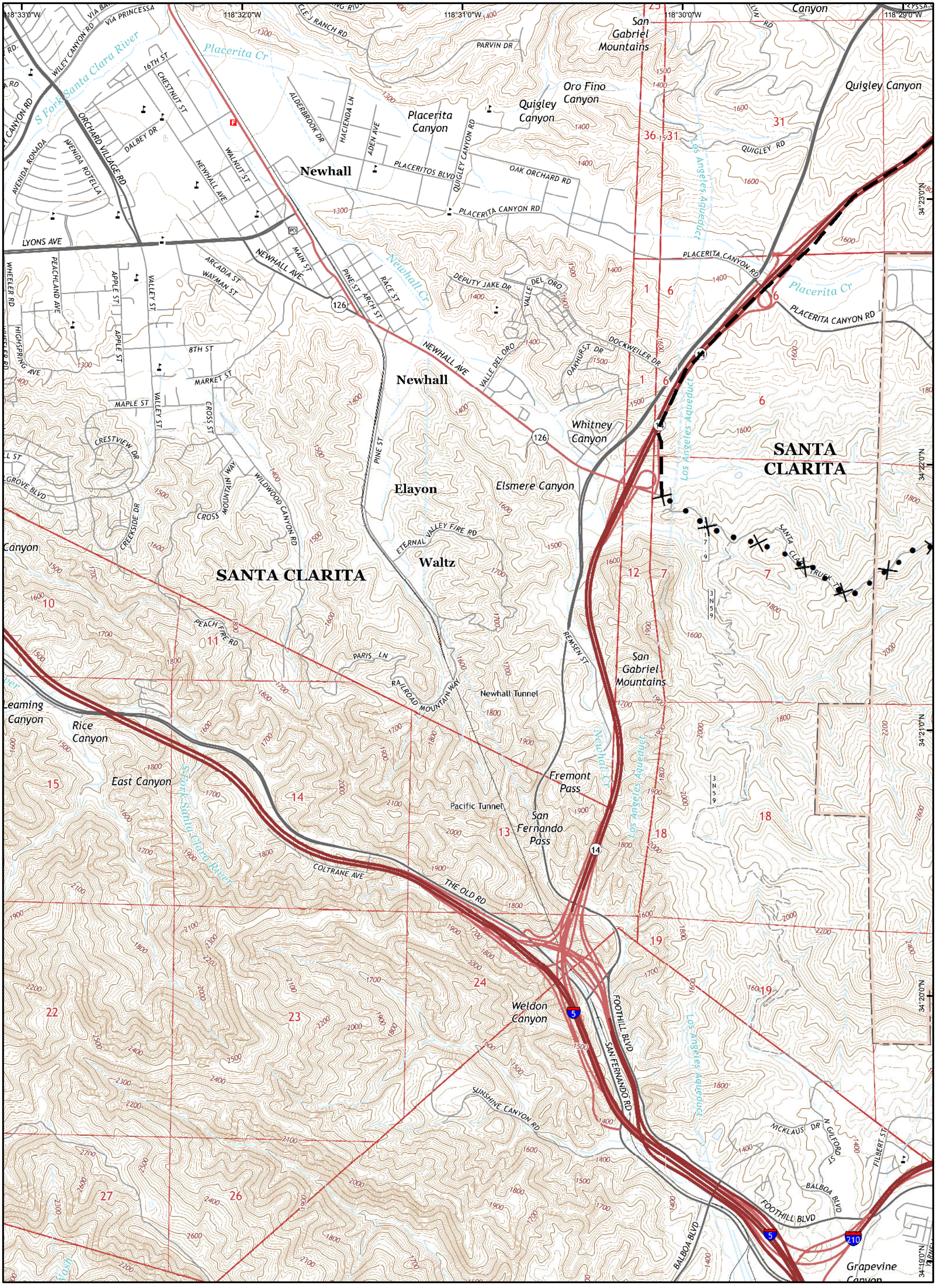
Legend

- Division
- Branch

- Uncontrolled Fire Edge
- Completed Line
- Proposed Dozer Line
- Planned Fire Line

- Repeater
- Camp
- Drop Point
- Helispot
- HeliBase
- Incident Command Post





SAND INCIDENT
 JULY 26, 2016 0600 HRS
 CA - ANF - 003008

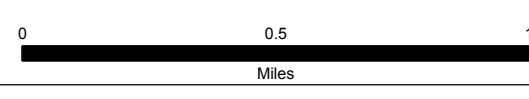
IAP MAP
 Page C0

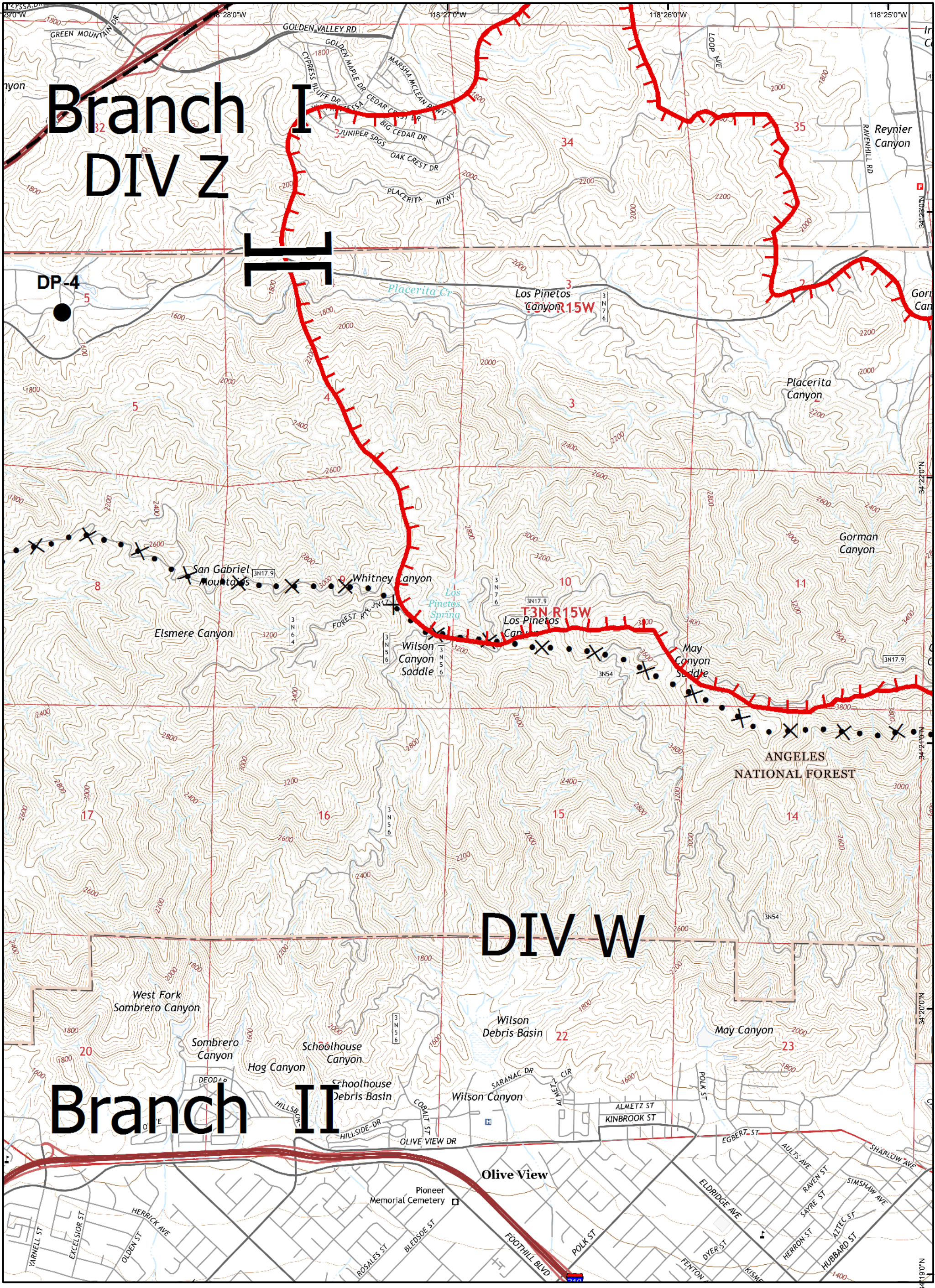
Legend

- Division
- Branch

- Uncontrolled Fire Edge
- Completed Line
- Proposed Dozer Line
- Planned Fire Line

- Repeater
- Camp
- Drop Point
- Helispot
- HeliBase
- Incident Command Post



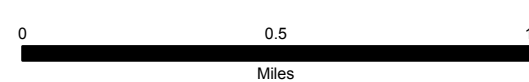


SAND INCIDENT
 JULY 26, 2016 0600 HRS
 CA - ANF - 003008

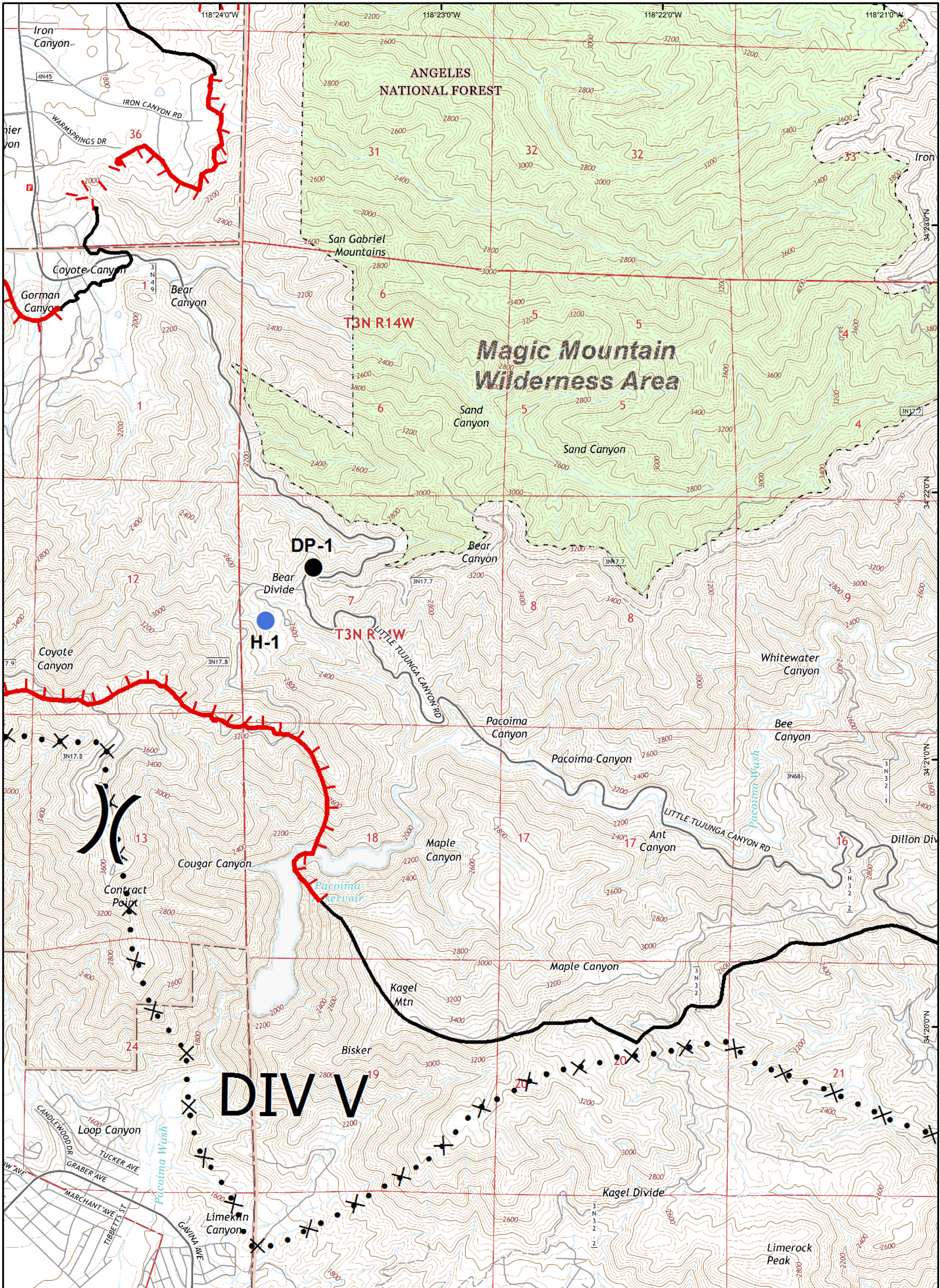
IAP MAP
 Page C1

Legend

- Uncontrolled Fire Edge
- Completed Line
- Planned Fire Line
- Division
- Branch
- Drop Point
- Helispot
- HeliBase
- Incident Command Post
- Repeater
- Camp
- Proposed Dozer Line



- Repeater
 - Camp
 - Drop Point
 - Helispot
 - HeliBase
 - Incident Command Post
- Datum; NAD83 GISS E. Lamas Team 3



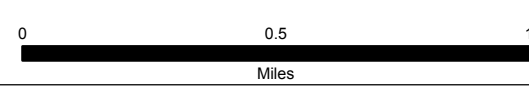
SAND INCIDENT
 JULY 26, 2016 0600 HRS
 CA - ANF - 003008

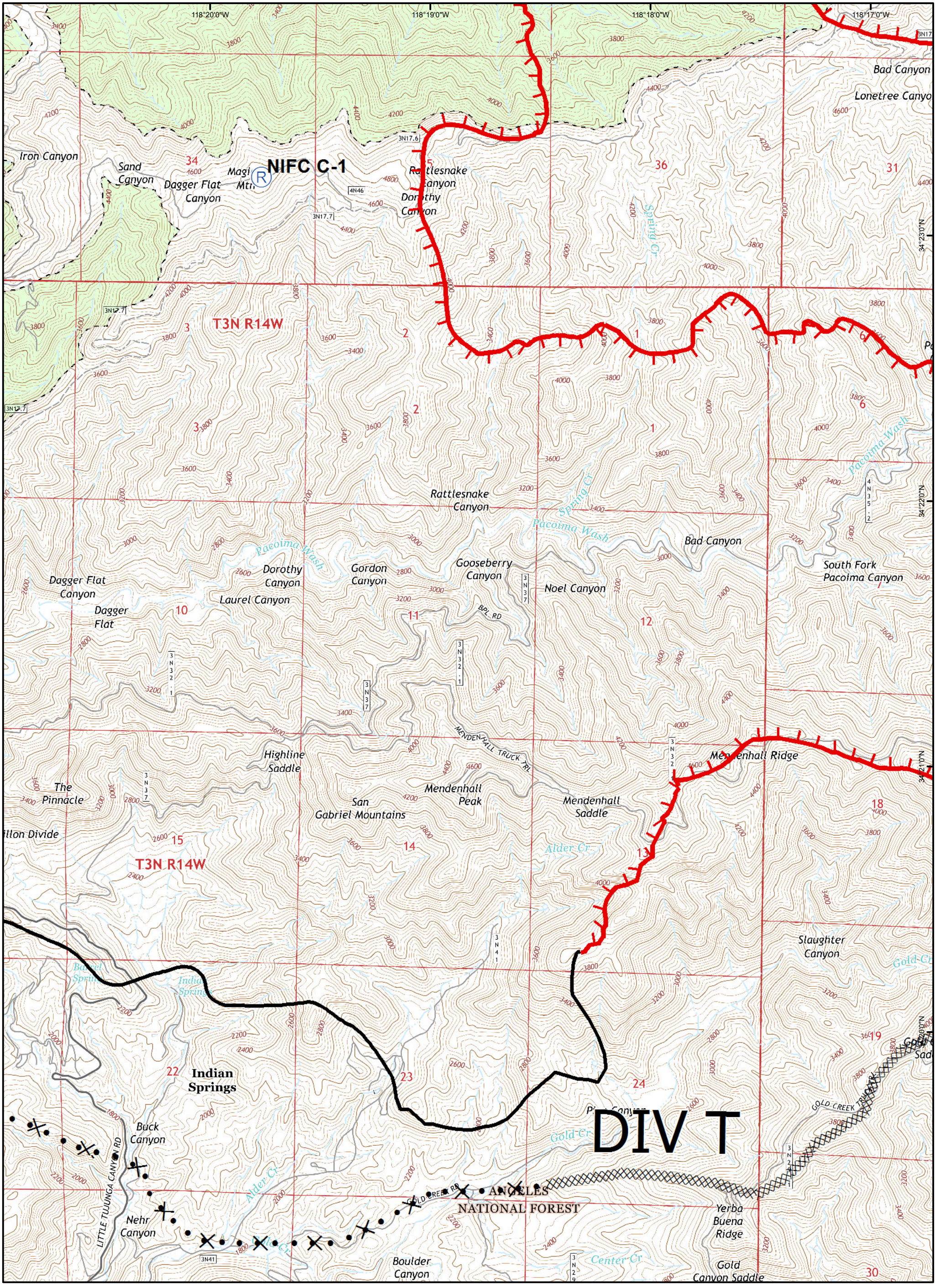
IAP MAP
 Page C2

Legend

- Division
- Branch
- Uncontrolled Fire Edge
- Completed Line
- Proposed Dozer Line
- Planned Fire Line

- Repeater
- Camp
- Drop Point
- Helispot
- HeliBase
- Incident Command Post



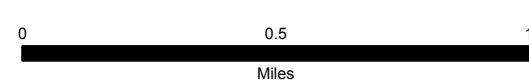


SAND INCIDENT
 JULY 26, 2016 0600 HRS
 CA - ANF - 003008

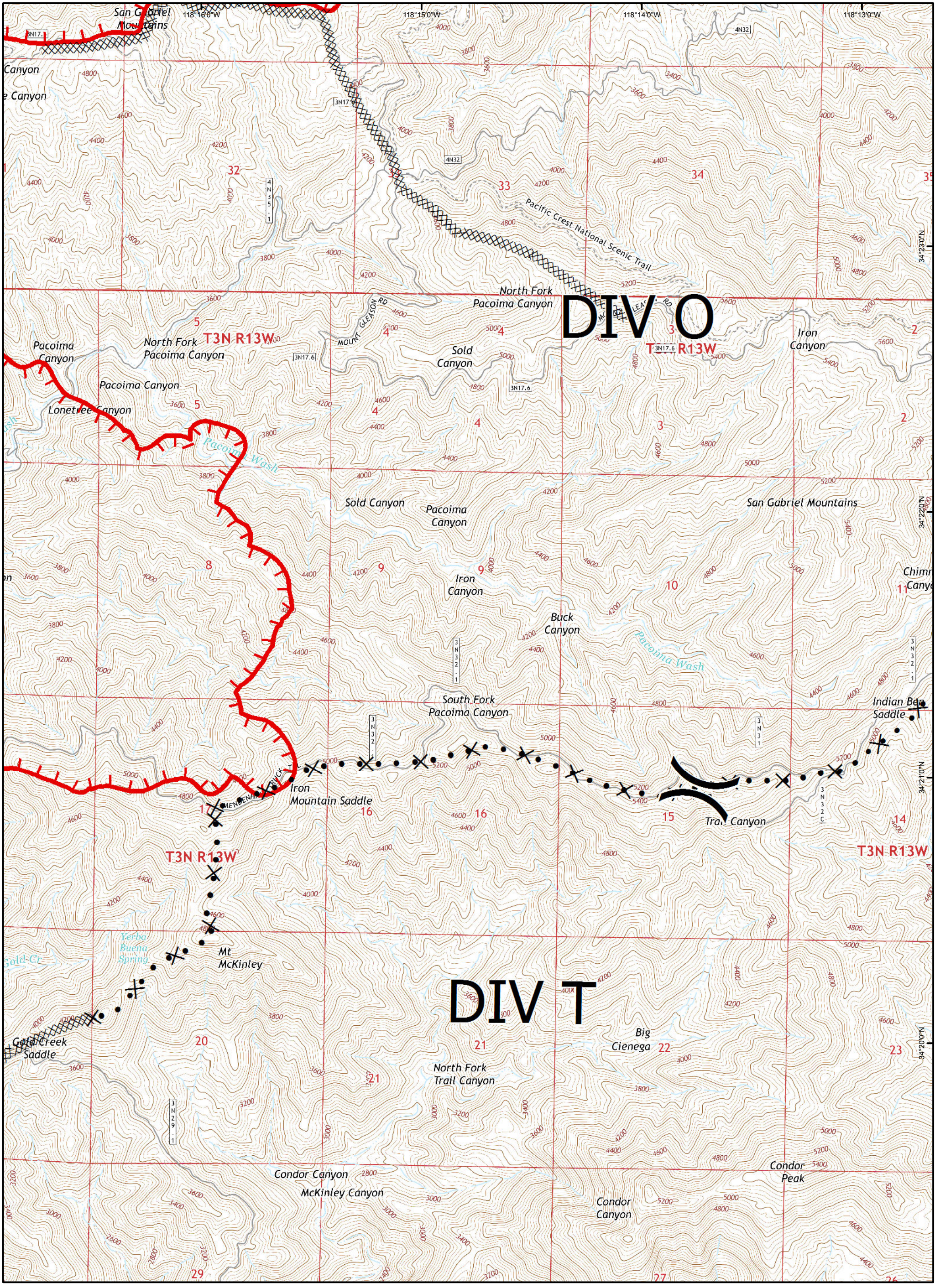
IAP MAP
 Page C3

Legend

- Uncontrolled Fire Edge
- Completed Line
- Planned Fire Line
- Repeater
- Camp
- Drop Point
- Helispot
- HeliBase
- Incident Command Post
- Division
- Proposed Dozer Line
- Branch



- Datum; NAD83
- GISS E. Lamas Team 3



SAND INCIDENT
 JULY 26, 2016 0600 HRS
 CA - ANF - 003008

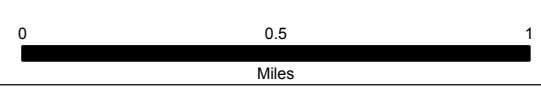
IAP MAP
 Page C4

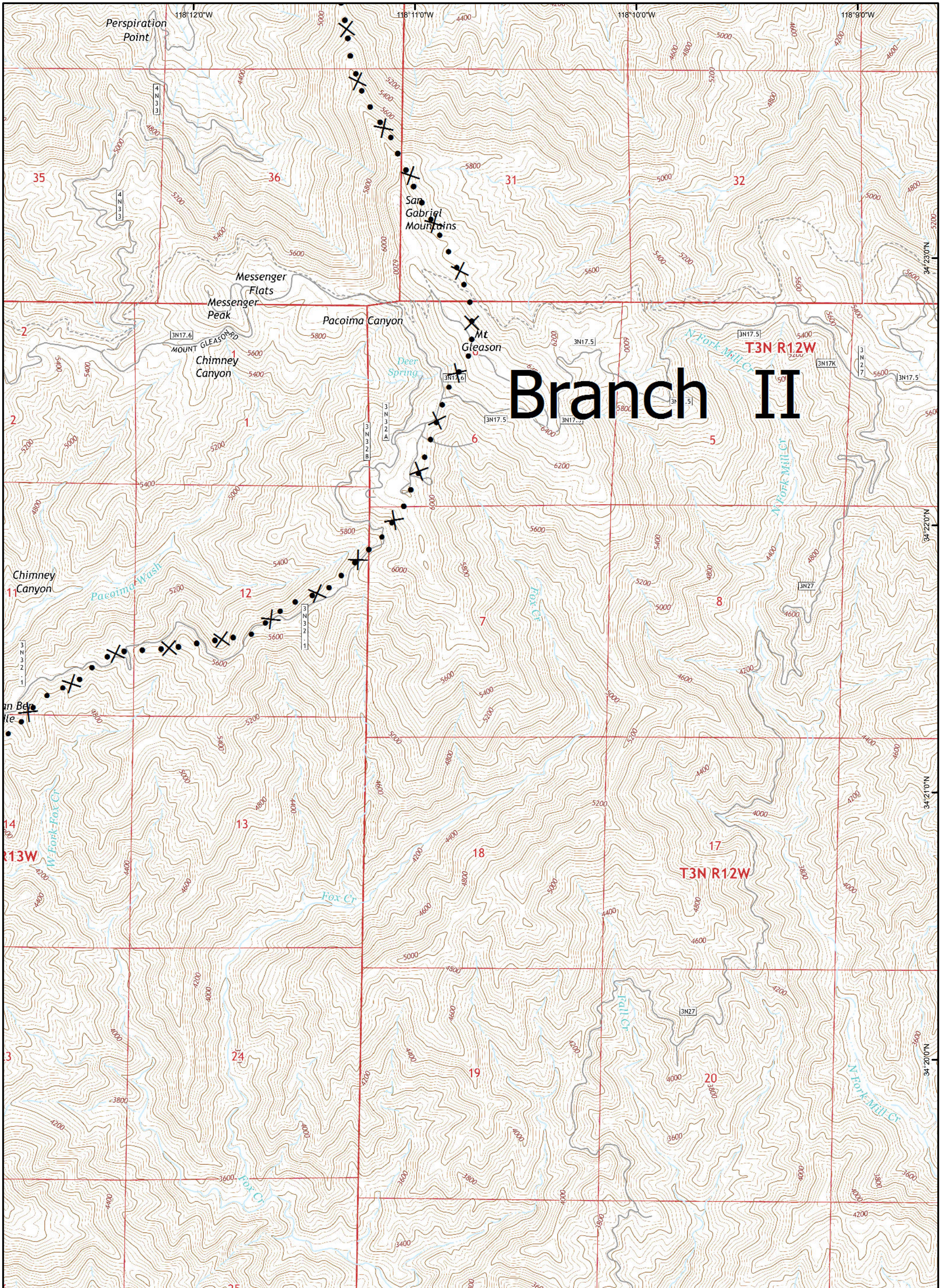
Legend

- Division
- Branch

- Uncontrolled Fire Edge
- Completed Line
- Proposed Dozer Line
- Planned Fire Line

- Repeater
- Camp
- Drop Point
- Helispot
- HeliBase
- Incident Command Post





SAND INCIDENT
 JULY 26, 2016 0600 HRS
 CA - ANF - 003008

IAP MAP
 Page C5

Legend

Division

Branch

Uncontrolled Fire Edge

Completed Line

Proposed Dozer Line

Planned Fire Line

Repeater

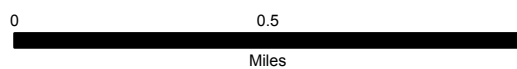
Camp

Drop Point

Helispot

HeliBase

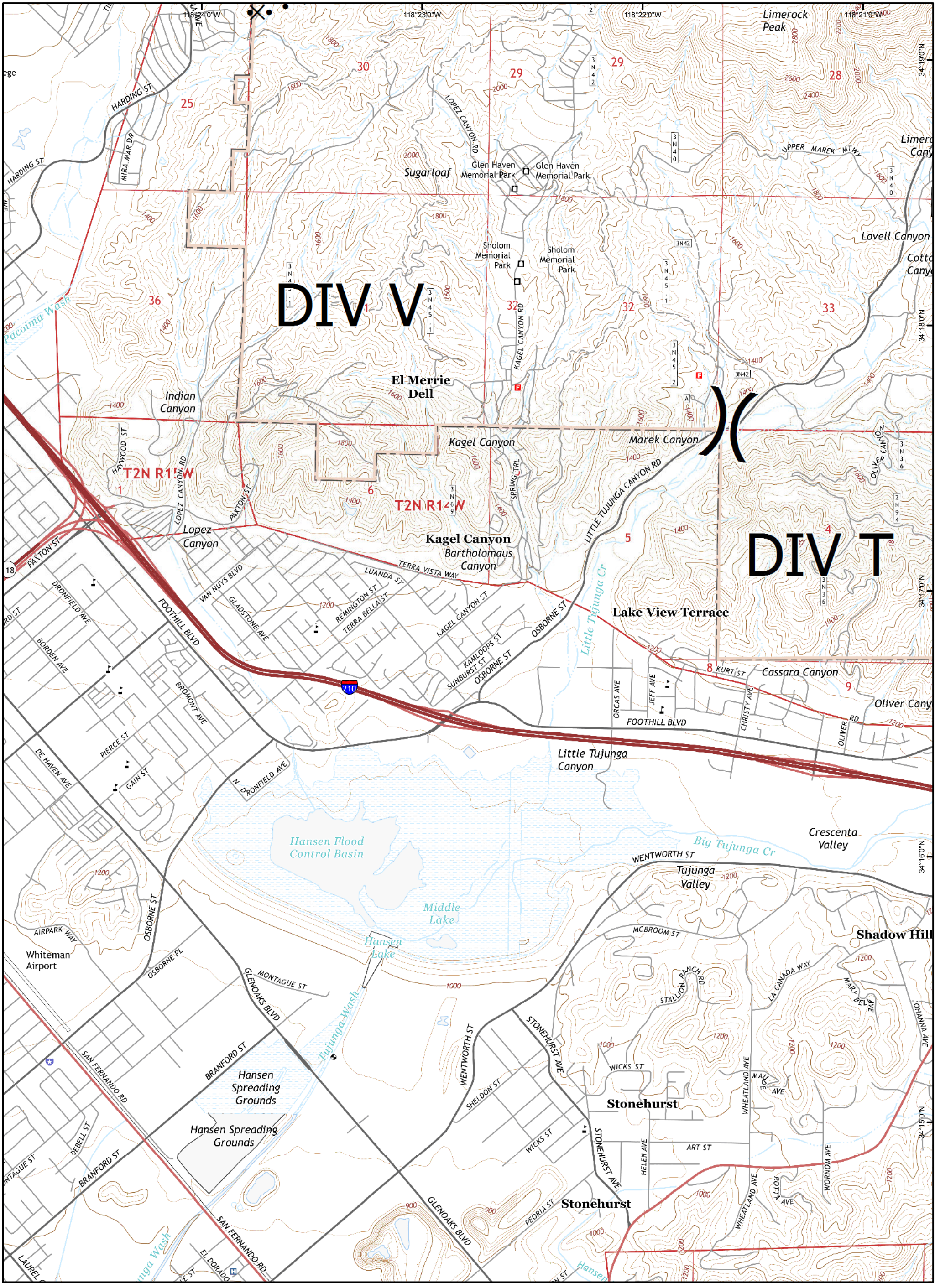
Incident Command Post



Datum; NAD83

GISS E. Lamas Team 3





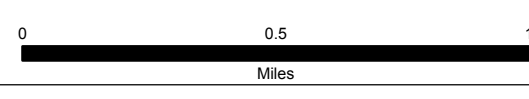
SAND INCIDENT
 JULY 26, 2016 0600 HRS
 CA - ANF - 003008

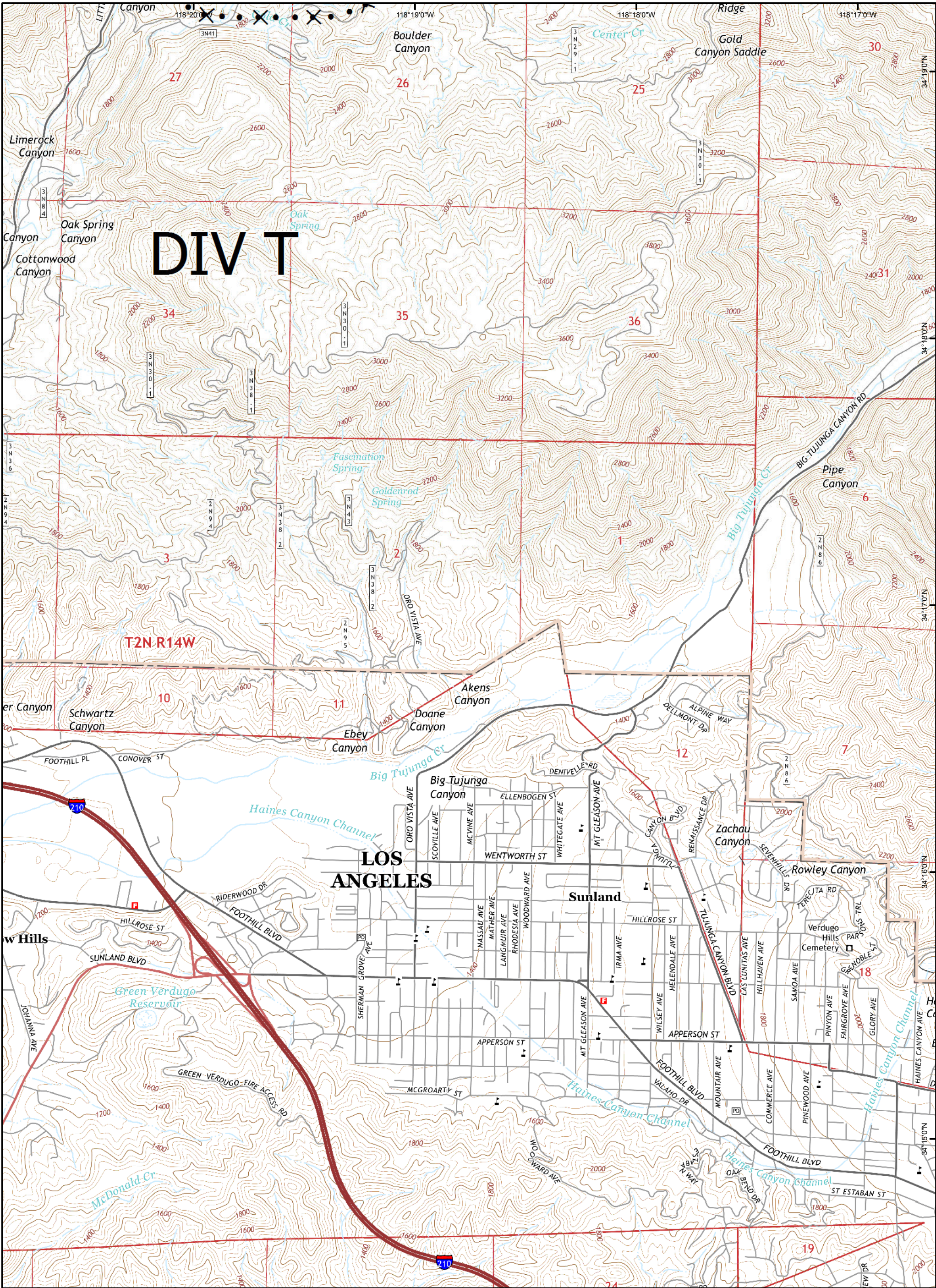
IAP MAP
 Page D2

Legend

- Division
- Completed Line
- Uncontrolled Fire Edge
- Planned Fire Line
- Proposed Dozer Line
- Branch

- Repeater
- Camp
- Drop Point
- Helispot
- HeliBase
- Incident Command Post





SAND INCIDENT
 JULY 26, 2016 0600 HRS
 CA - ANF - 003008

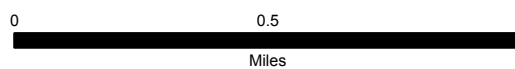
IAP MAP
 Page D3

Legend

- Division
- Branch

- Uncontrolled Fire Edge
- Completed Line
- Proposed Dozer Line
- Planned Fire Line

- Repeater
- Camp
- Drop Point
- Helispot
- HeliBase
- Incident Command Post



Datum; NAD83

GISS E. Lamas Team 3