

SAND INCIDENT
 JULY 28, 2016 0600 HRS
 CA-ANF-003008

IAP MAP
 Index

Legend

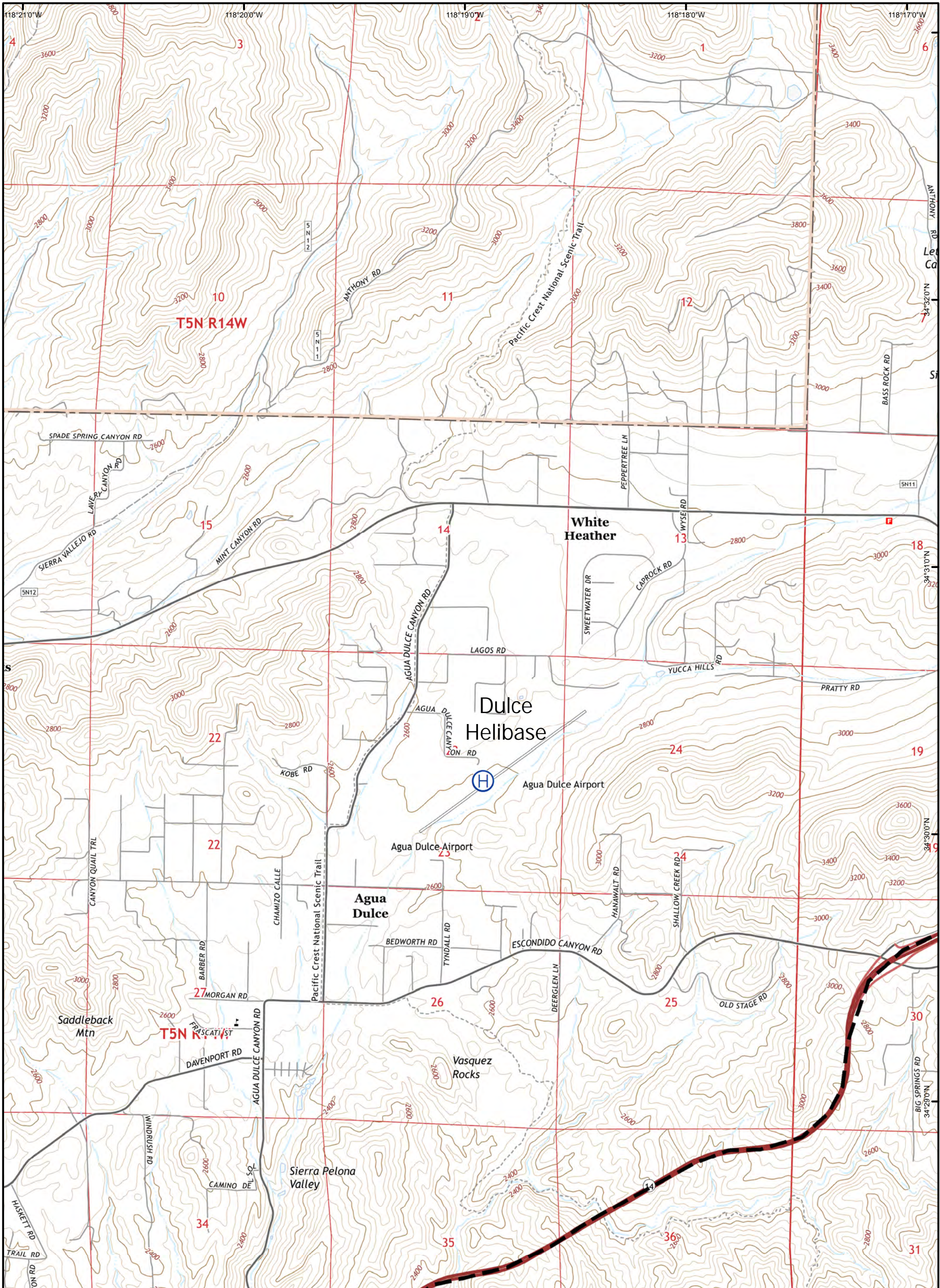
-) (Division
-][Branch

- Uncontrolled Fire Edge
- Completed Line
- Proposed Dozer Line
- Planned Fire Line

- Dip Site
- Repeater
- Camp
- Drop Point
- Helispot
- HeliBase
- Incident Command Post

0 3.25 6.5
 Datum: NAD83 Mile GISS E. Lamas Team 3





SAND INCIDENT
 JULY 28, 2016 0600 HRS
 CA - ANF - 003008

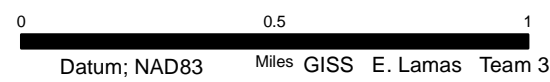
IAP MAP
 Page A3

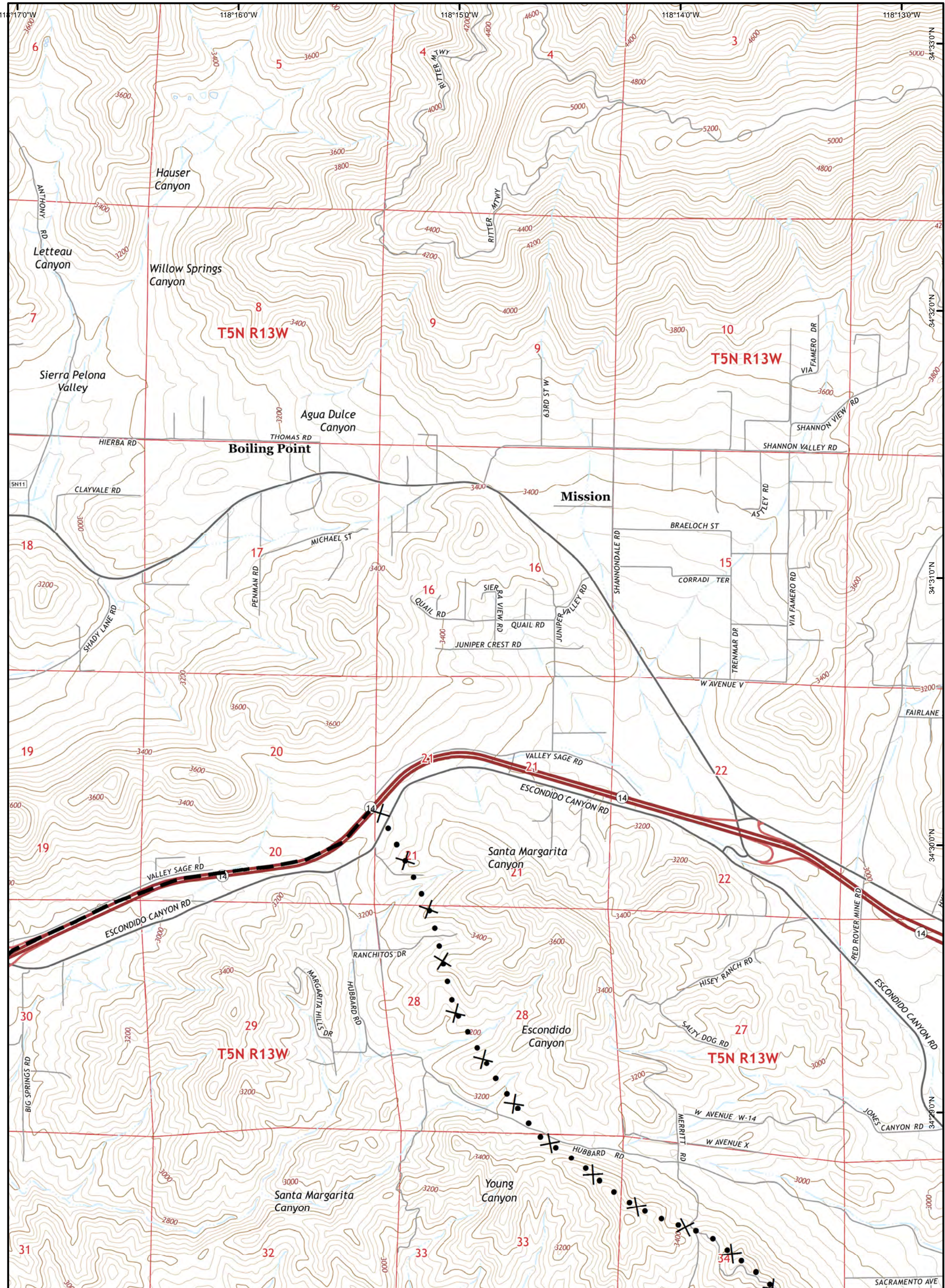
Legend

-) (Division
-] [Branch

- Uncontrolled Fire Edge
- Completed Line
- Proposed Dozer Line
- Planned Fire Line

- Dip Site
- Repeater
- Camp
- Drop Point
- Helispot
- HeliBase
- Incident Command Post





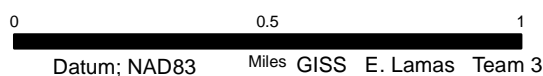
SAND INCIDENT
 JULY 28, 2016 0600 HRS
 CA - ANF - 003008

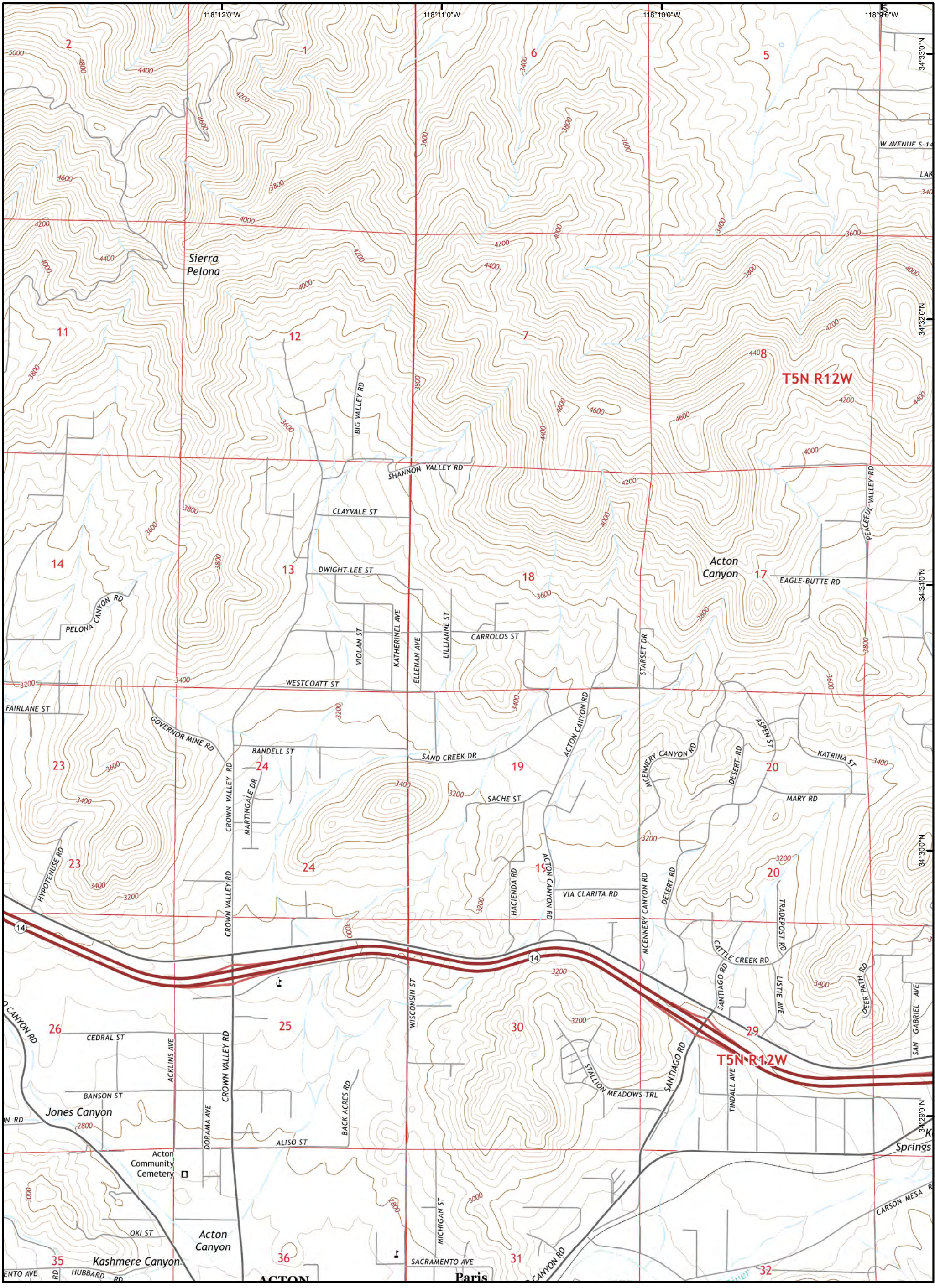
IAP MAP
 Page A4

Legend

- Uncontrolled Fire Edge
- Completed Line
- Planned Fire Line
- Proposed Dozer Line
- Division
- Branch

- Dip Site
- Repeater
- Camp
- Drop Point
- Helispot
- HeliBase
- Incident Command Post





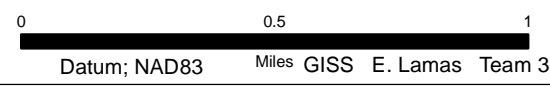
SAND INCIDENT
 JULY 28, 2016 0600 HRS
 CA - ANF - 003008

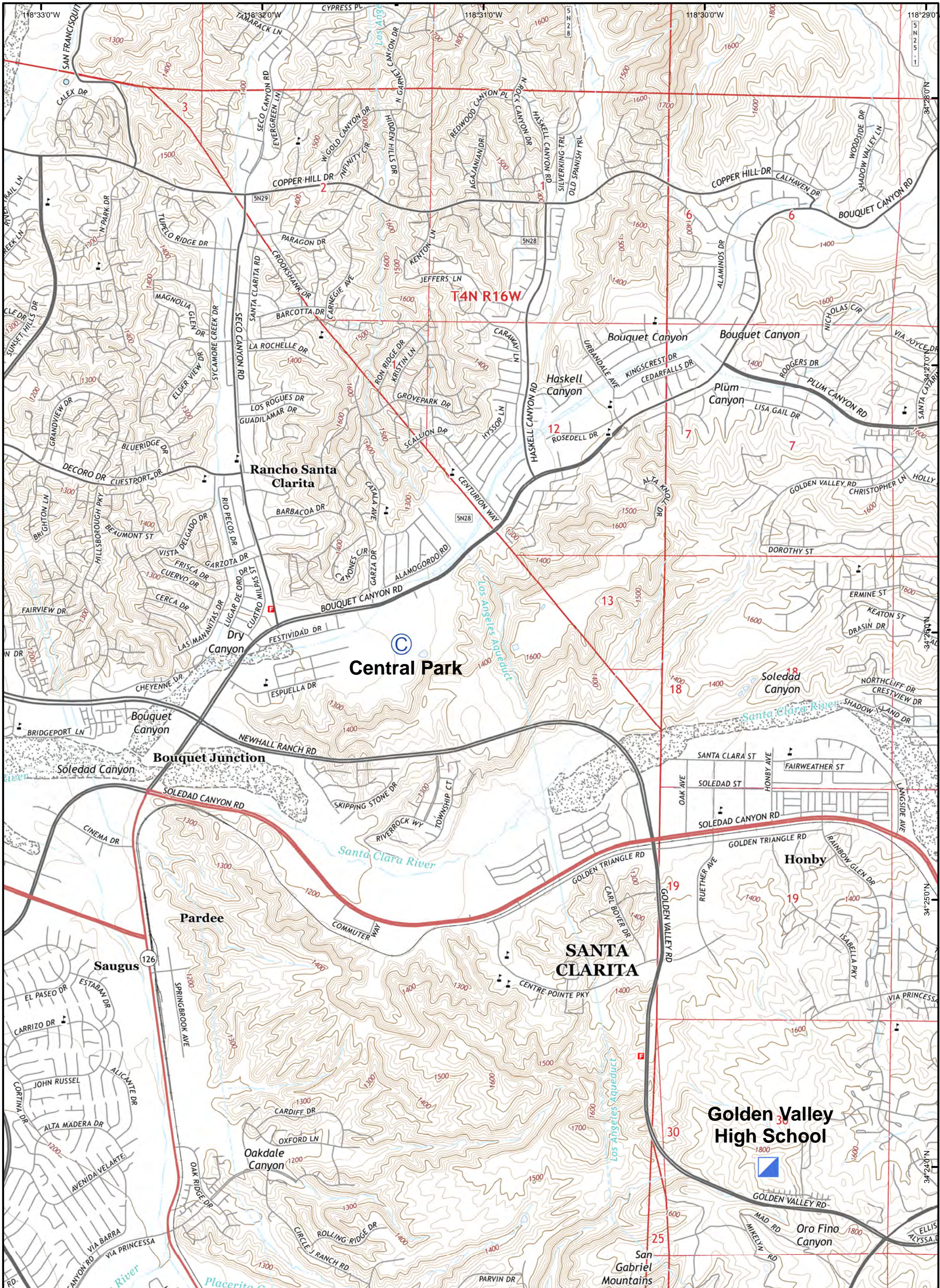
IAP MAP
 Page A5

Legend

- Uncontrolled Fire Edge
- Completed Line
- Proposed Dozer Line
- Planned Fire Line
- Division
- Branch

- Dip Site
- Repeater
- Camp
- Drop Point
- Helispot
- HeliBase
- Incident Command Post





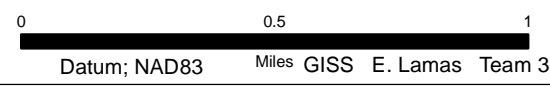
SAND INCIDENT
 JULY 28, 2016 0600 HRS
 CA - ANF - 003008

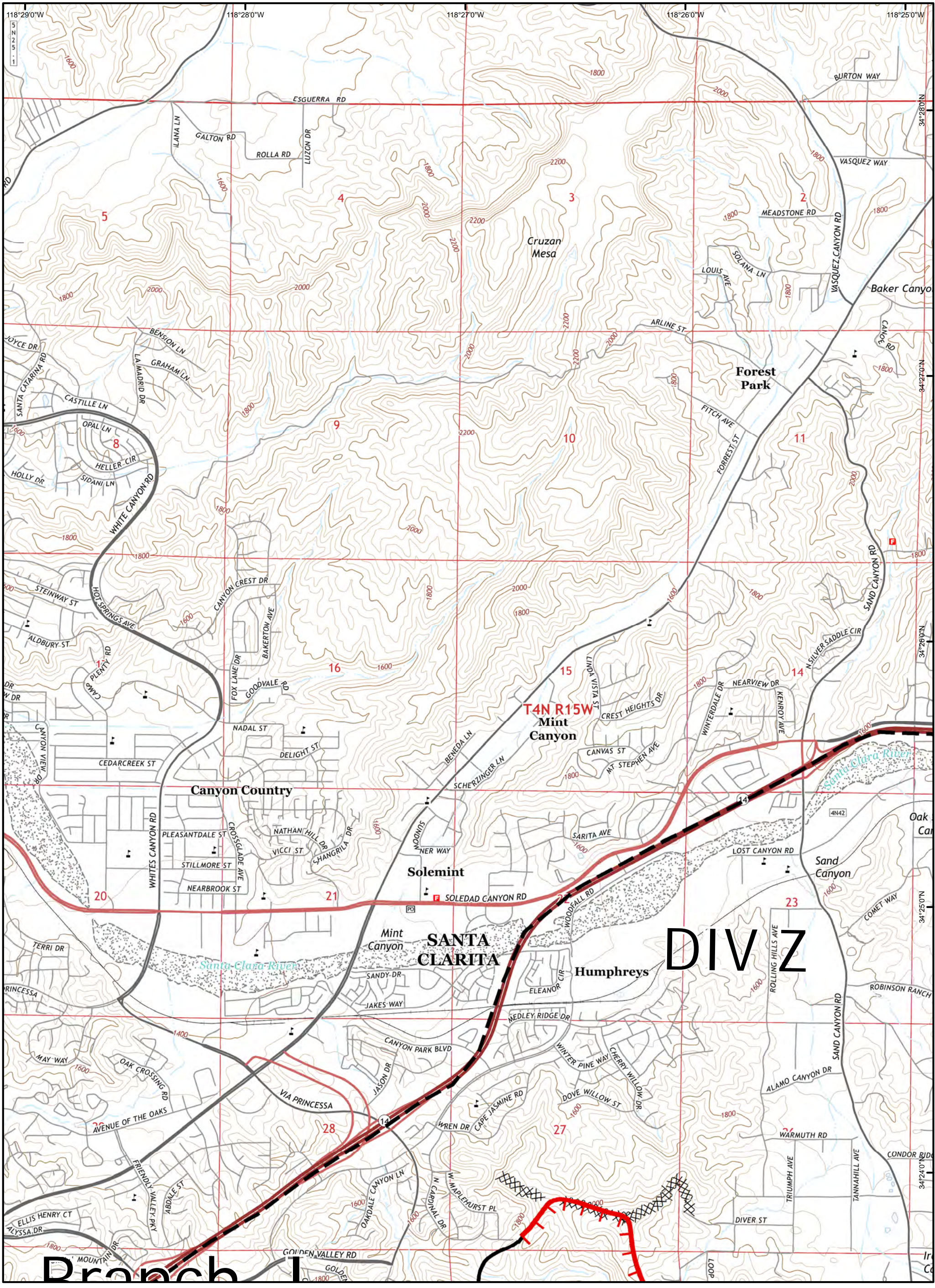
IAP MAP
 Page B0

Legend

- Uncontrolled Fire Edge
- Completed Line
- Proposed Dozer Line
- Planned Fire Line
- Division
- Branch

- Dip Site
- Repeater
- Camp
- Drop Point
- Helispot
- HeliBase
- Incident Command Post





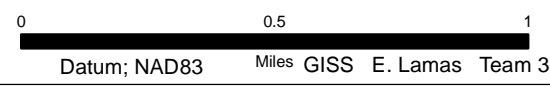
SAND INCIDENT
 JULY 28, 2016 0600 HRS
 CA - ANF - 003008

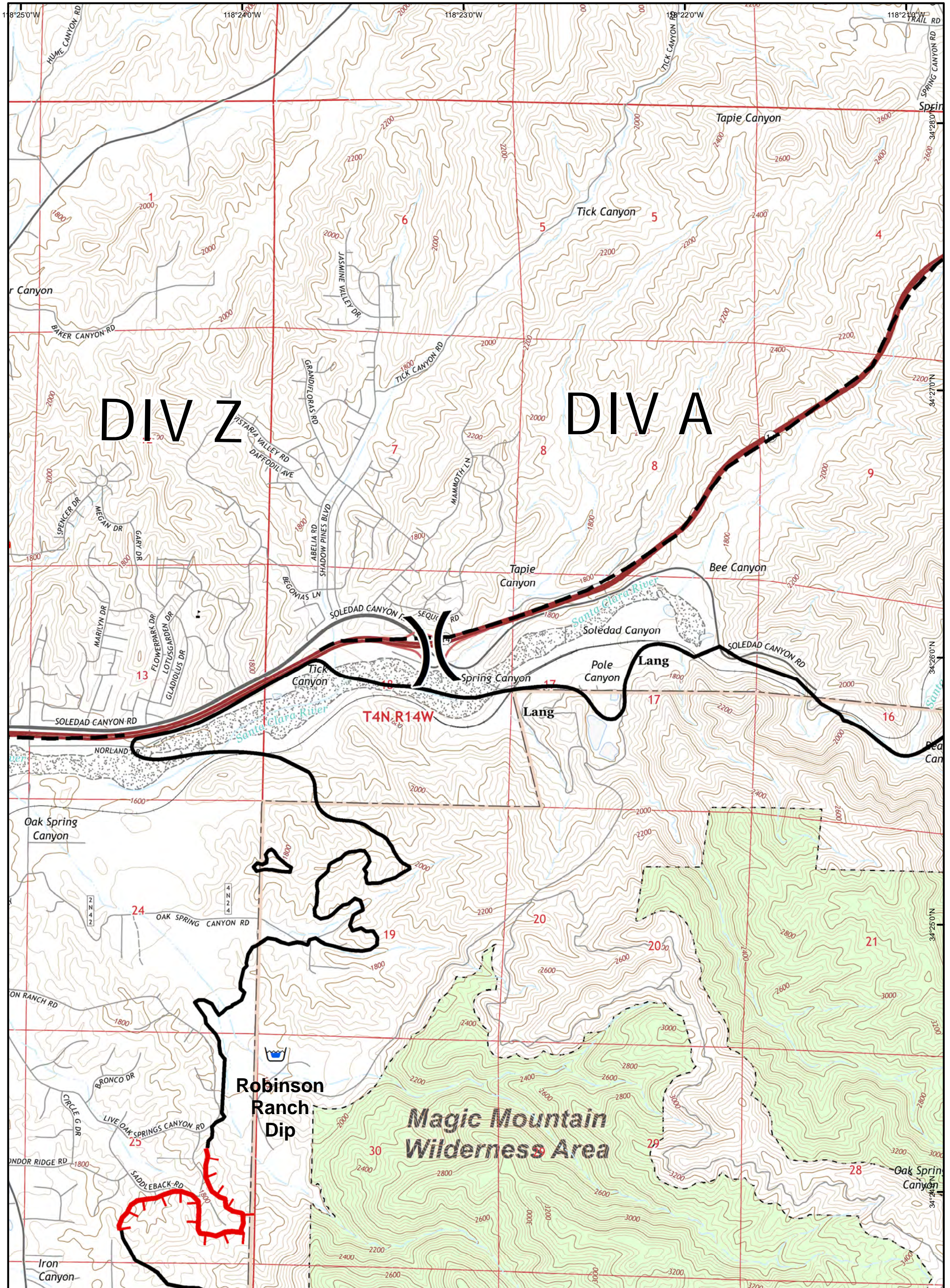
IAP MAP
 Page B1

Legend

- Uncontrolled Fire Edge
- Completed Line
- Planned Fire Line
- Proposed Dozer Line
- Division
- Branch

- Dip Site
- Repeater
- Camp
- Drop Point
- Helispot
- HeliBase
- Incident Command Post





SAND INCIDENT
 JULY 28, 2016 0600 HRS
 CA - ANF - 003008

IAP MAP
 Page B2

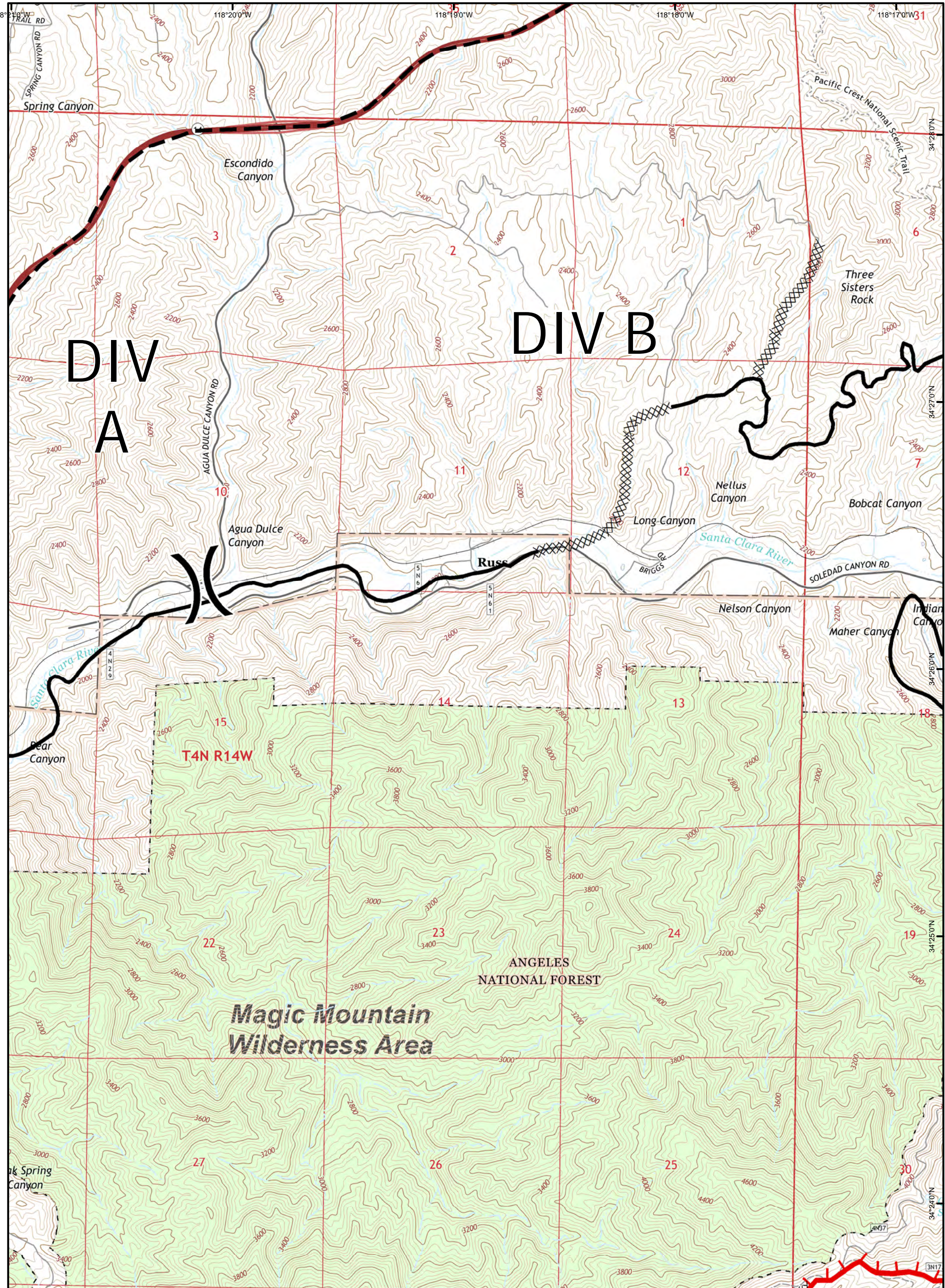
Legend

- Uncontrolled Fire Edge
- Completed Line
- Proposed Dozer Line
- Planned Fire Line
- Division
- Branch

- Dip Site
- Repeater
- Camp
- Drop Point
- Helispot
- HeliBase
- Incident Command Post

0 0.5 1
 Datum; NAD83 Miles GISS E. Lamas Team 3





SAND INCIDENT
 JULY 28, 2016 0600 HRS
 CA - ANF - 003008

IAP MAP
 Page B3

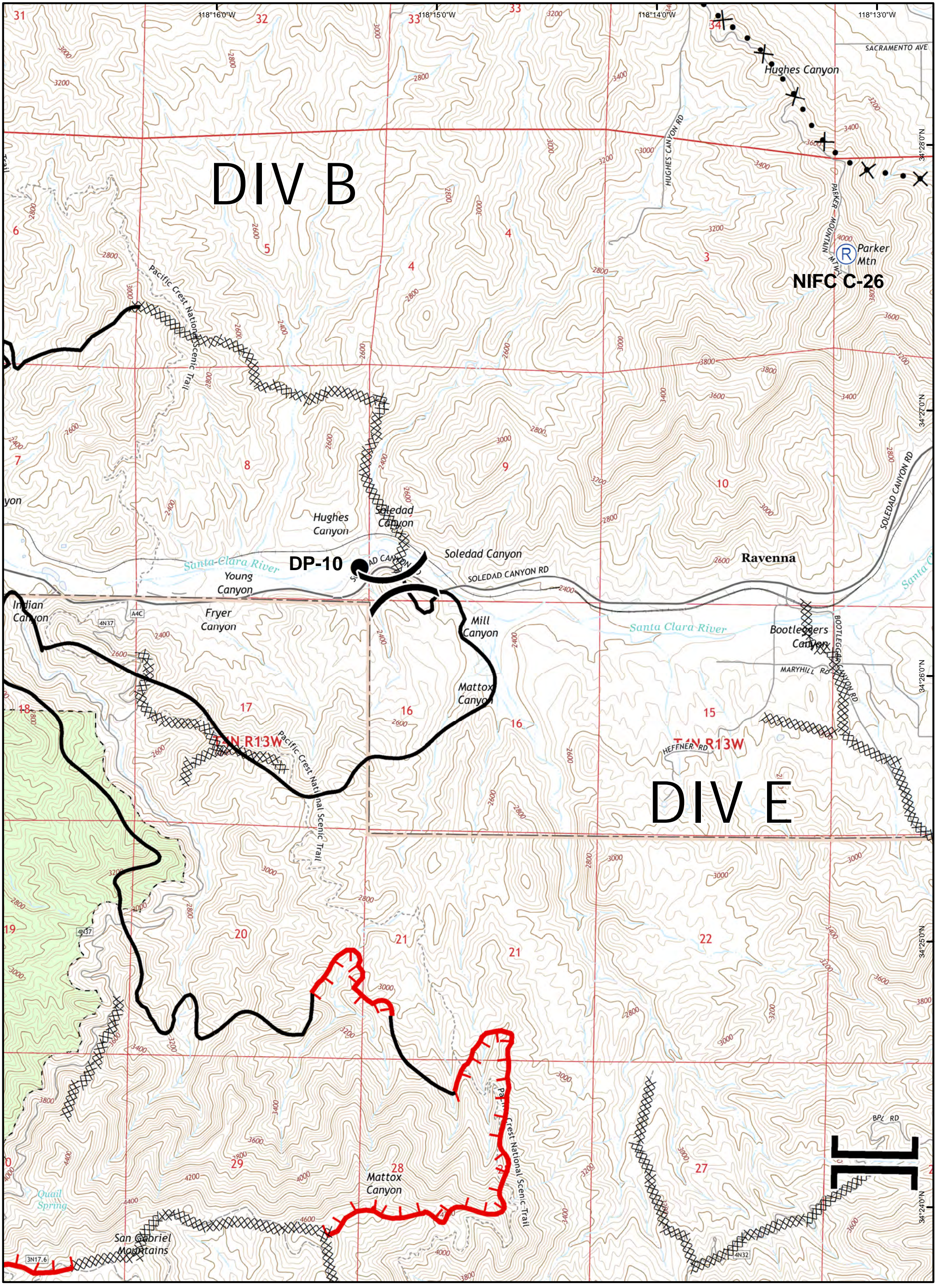
Legend

- Uncontrolled Fire Edge
- Completed Line
- Planned Fire Line
- Proposed Dozer Line
- Division
- Branch

- Dip Site
- Repeater
- Camp
- Drop Point
- Helispot
- HeliBase
- Incident Command Post

0 0.5 1
 Datum; NAD83 Miles GISS E. Lamas Team 3





DIV B

DIV E

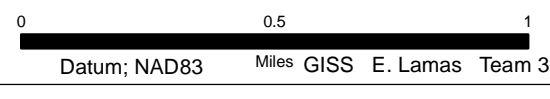
SAND INCIDENT
 JULY 28, 2016 0600 HRS
 CA - ANF - 003008

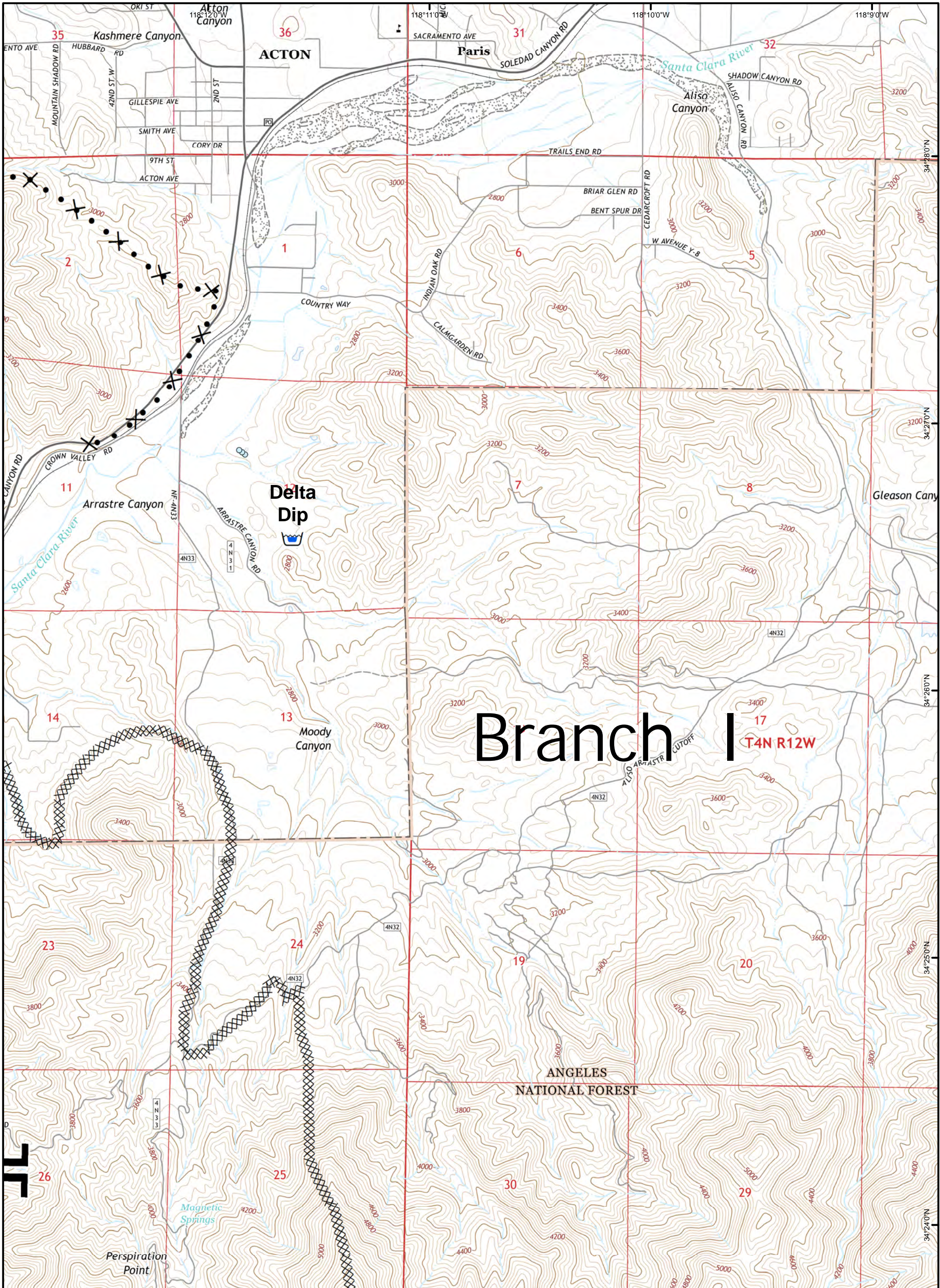
IAP MAP
 Page B4

Legend

-) (Division
-] [Branch
- ▬▬▬ Uncontrolled Fire Edge
- ▬▬▬ Completed Line
- × • • Proposed Dozer Line
- - - Planned Fire Line

- 🏠 Dip Site
- Ⓡ Repeater
- Ⓒ Camp
- Drop Point
- Helispot
- Ⓜ HeliBase
- 🏠 Incident Command Post





SAND INCIDENT
 JULY 28, 2016 0600 HRS
 CA - ANF - 003008

IAP MAP
 Page B5

Legend

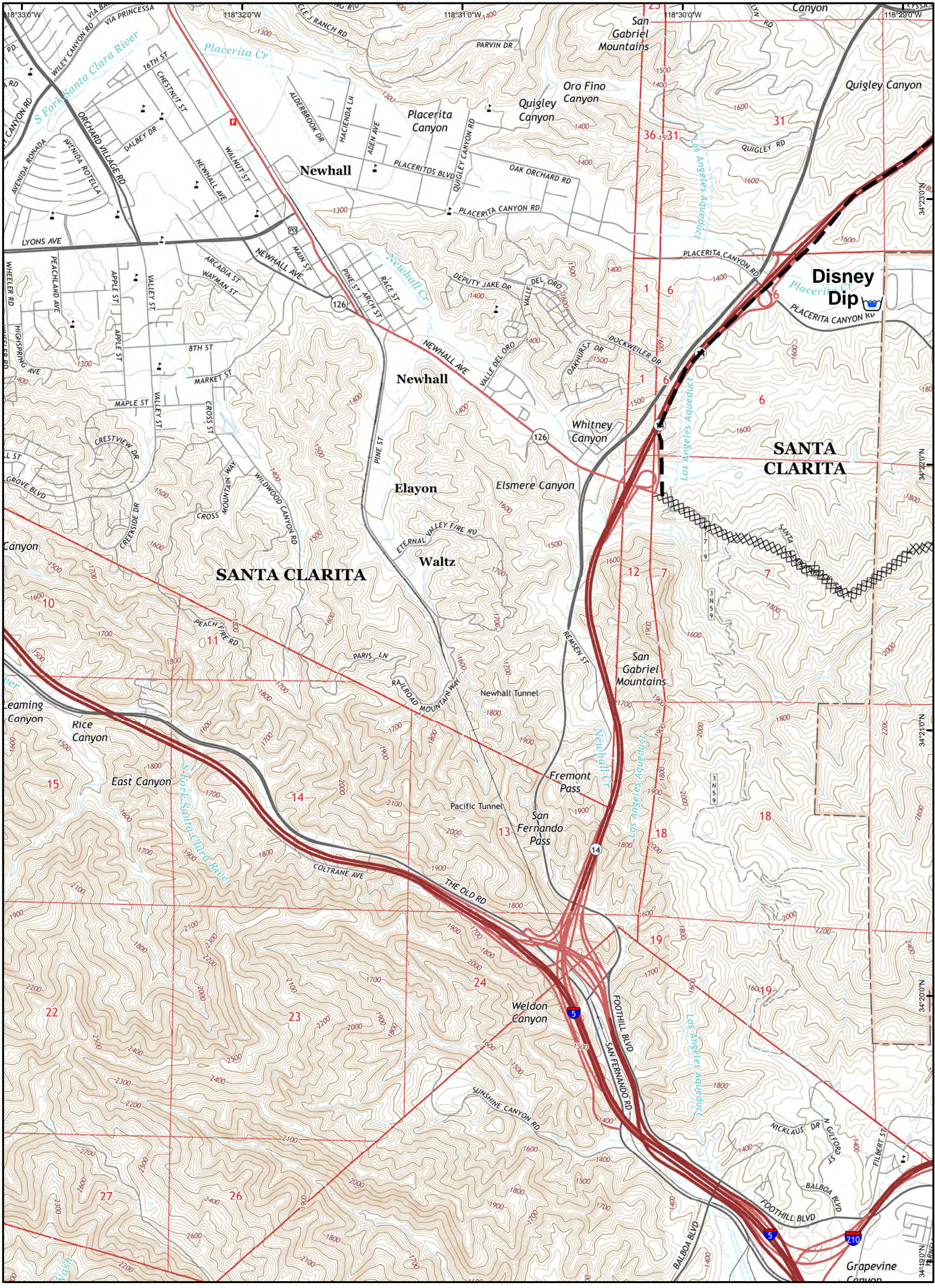
-) (Division
-][Branch

- Uncontrolled Fire Edge
- Completed Line
- Proposed Dozer Line
- Planned Fire Line

- Dip Site
- Repeater
- Camp
- Drop Point
- Helispot
- HeliBase
- Incident Command Post

0 0.5 1
 Datum; NAD83 Miles GISS E. Lamas Team 3





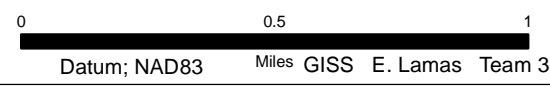
SAND INCIDENT
 JULY 28, 2016 0600 HRS
 CA - ANF - 003008

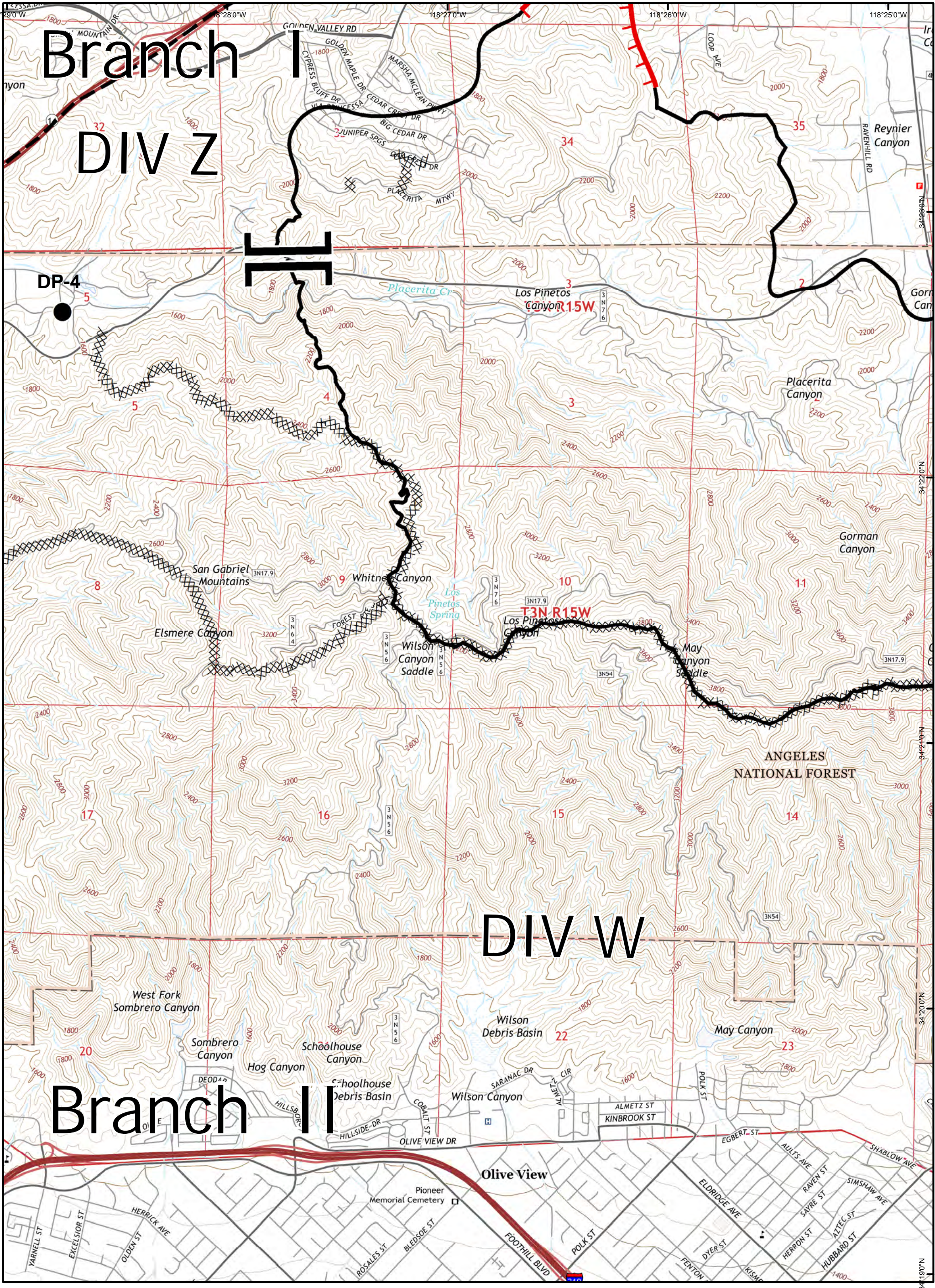
IAP MAP
 Page C0

Legend

- Uncontrolled Fire Edge
- Completed Line
- Proposed Dozer Line
- Planned Fire Line
- Division
- Branch

- Dip Site
- Repeater
- Camp
- Drop Point
- Helispot
- HeliBase
- Incident Command Post





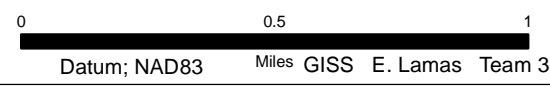
SAND INCIDENT
 JULY 28, 2016 0600 HRS
 CA - ANF - 003008

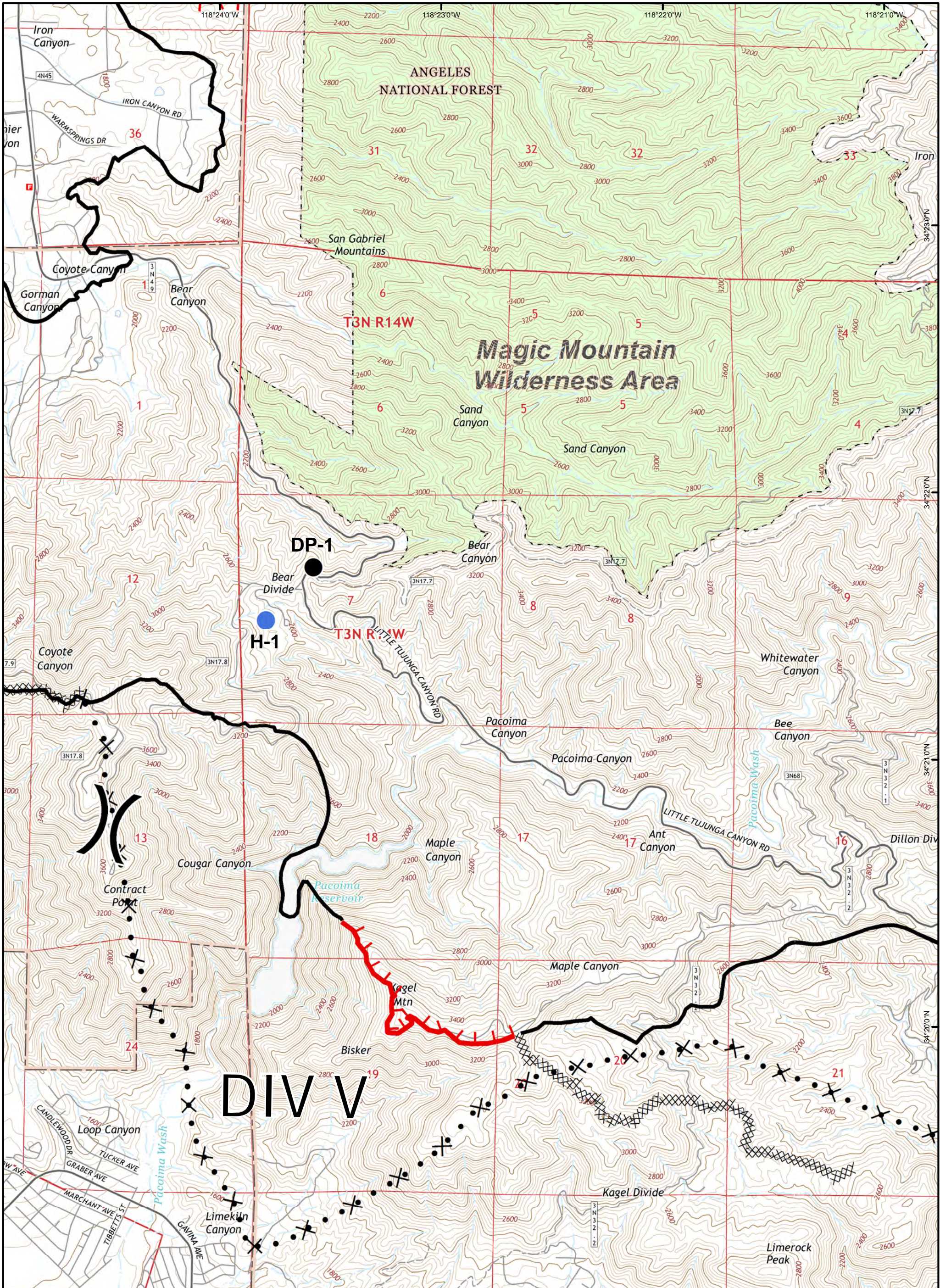
IAP MAP
 Page C1

Legend

- Uncontrolled Fire Edge
- Completed Line
- Planned Fire Line
- Proposed Dozer Line
- Division
- Branch

- Dip Site
- Repeater
- Camp
- Drop Point
- Helispot
- HeliBase
- Incident Command Post





SAND INCIDENT
 JULY 28, 2016 0600 HRS
 CA - ANF - 003008

IAP MAP
 Page C2

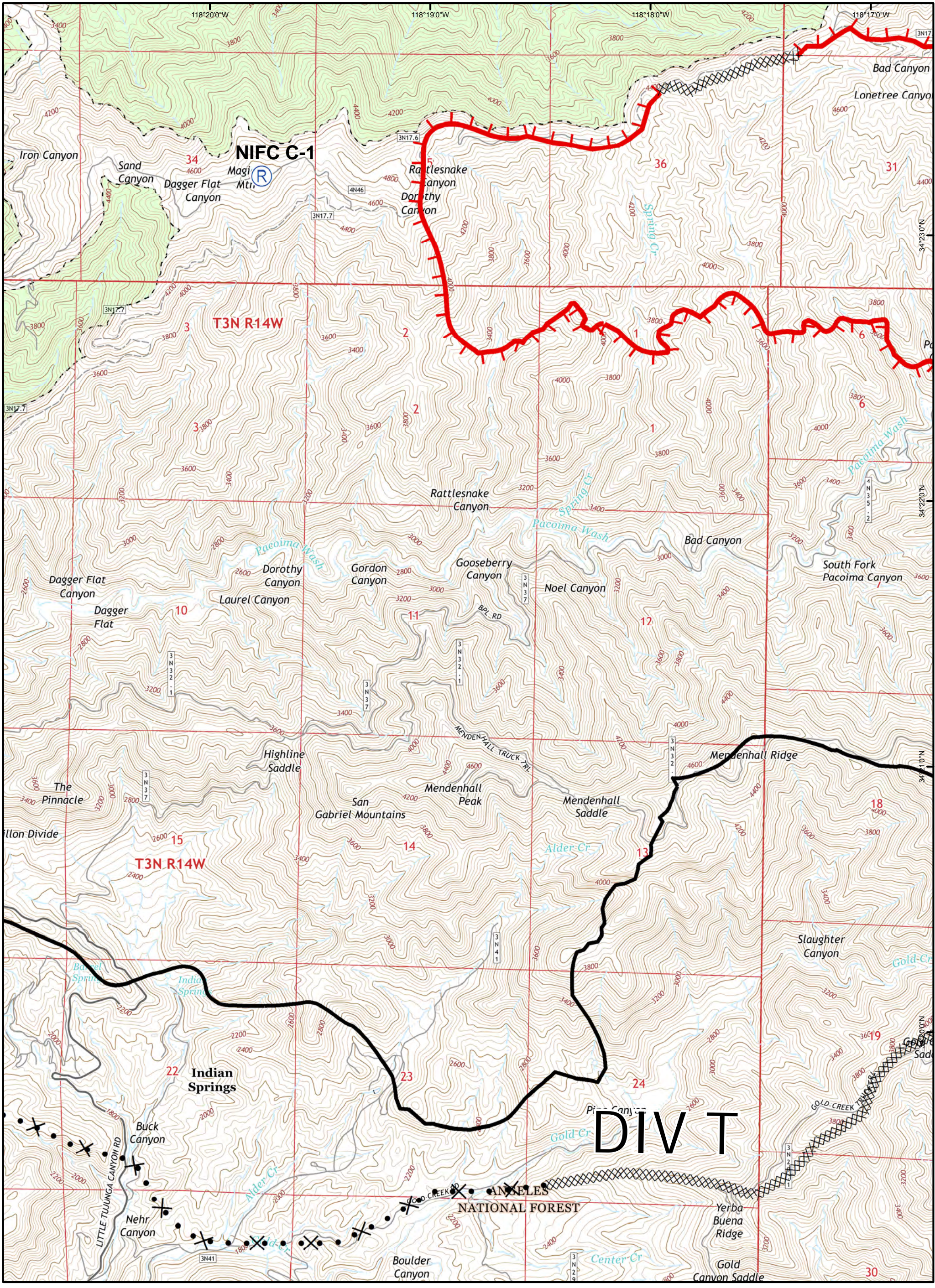
Legend

- Uncontrolled Fire Edge
- Completed Line
- Planned Fire Line
- Proposed Dozer Line
- Division
- Branch

- Dip Site
- Repeater
- Camp
- Drop Point
- Helispot
- HeliBase
- Incident Command Post

0 0.5 1
 Datum; NAD83 Miles GISS E. Lamas Team 3





SAND INCIDENT
 JULY 28, 2016 0600 HRS
 CA - ANF - 003008

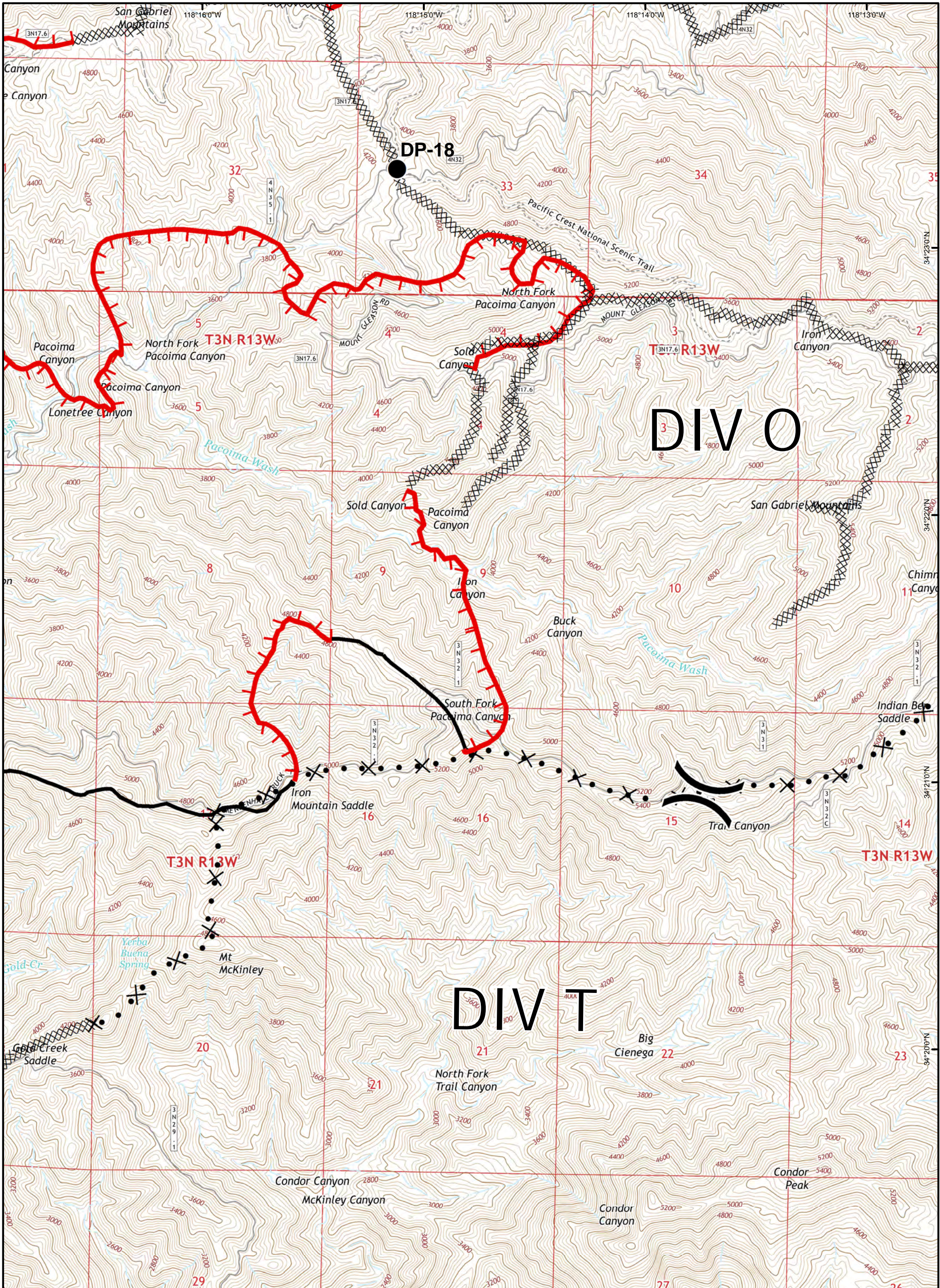
IAP MAP
 Page C3

Legend

- Uncontrolled Fire Edge
- Completed Line
- Proposed Dozer Line
- Planned Fire Line
- Division
- Branch

- Dip Site
- Repeater
- Camp
- Drop Point
- Helispot
- HeliBase
- Incident Command Post

0 0.5 1
 Datum; NAD83 Miles GISS E. Lamas Team 3



SAND INCIDENT
 JULY 28, 2016 0600 HRS
 CA - ANF - 003008

IAP MAP
 Page C4

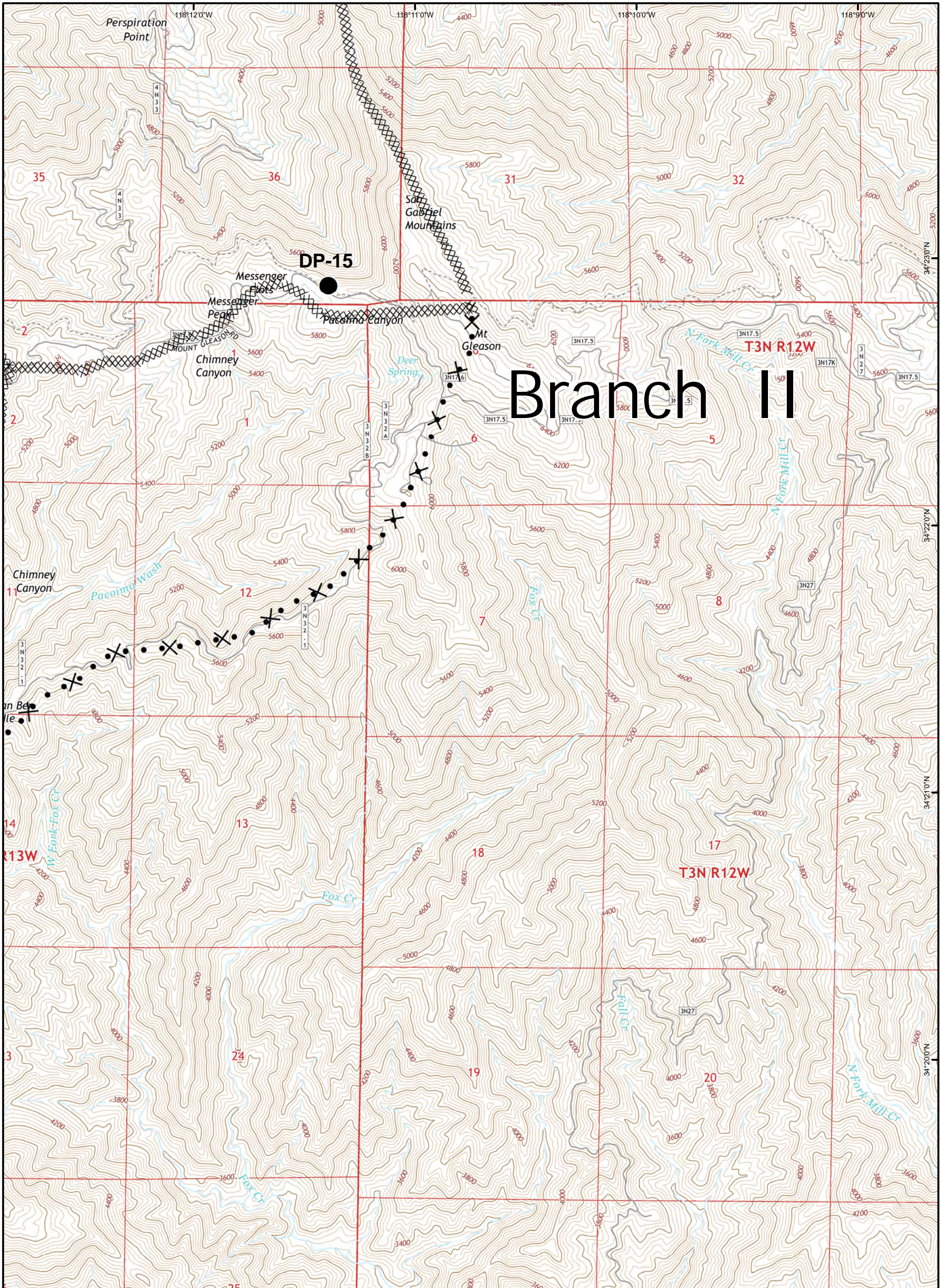
Legend

- Uncontrolled Fire Edge
- Completed Line
- Proposed Dozer Line
- Planned Fire Line
- Division
- Branch

- Dip Site
- Repeater
- Camp
- Drop Point
- Helispot
- HeliBase
- Incident Command Post

0 0.5 1
 Datum: NAD83 Miles GISS E. Lamas Team 3





SAND INCIDENT
 JULY 28, 2016 0600 HRS
 CA - ANF - 003008

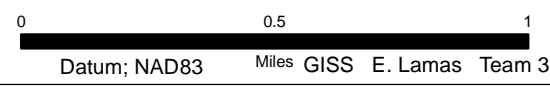
IAP MAP
 Page C5

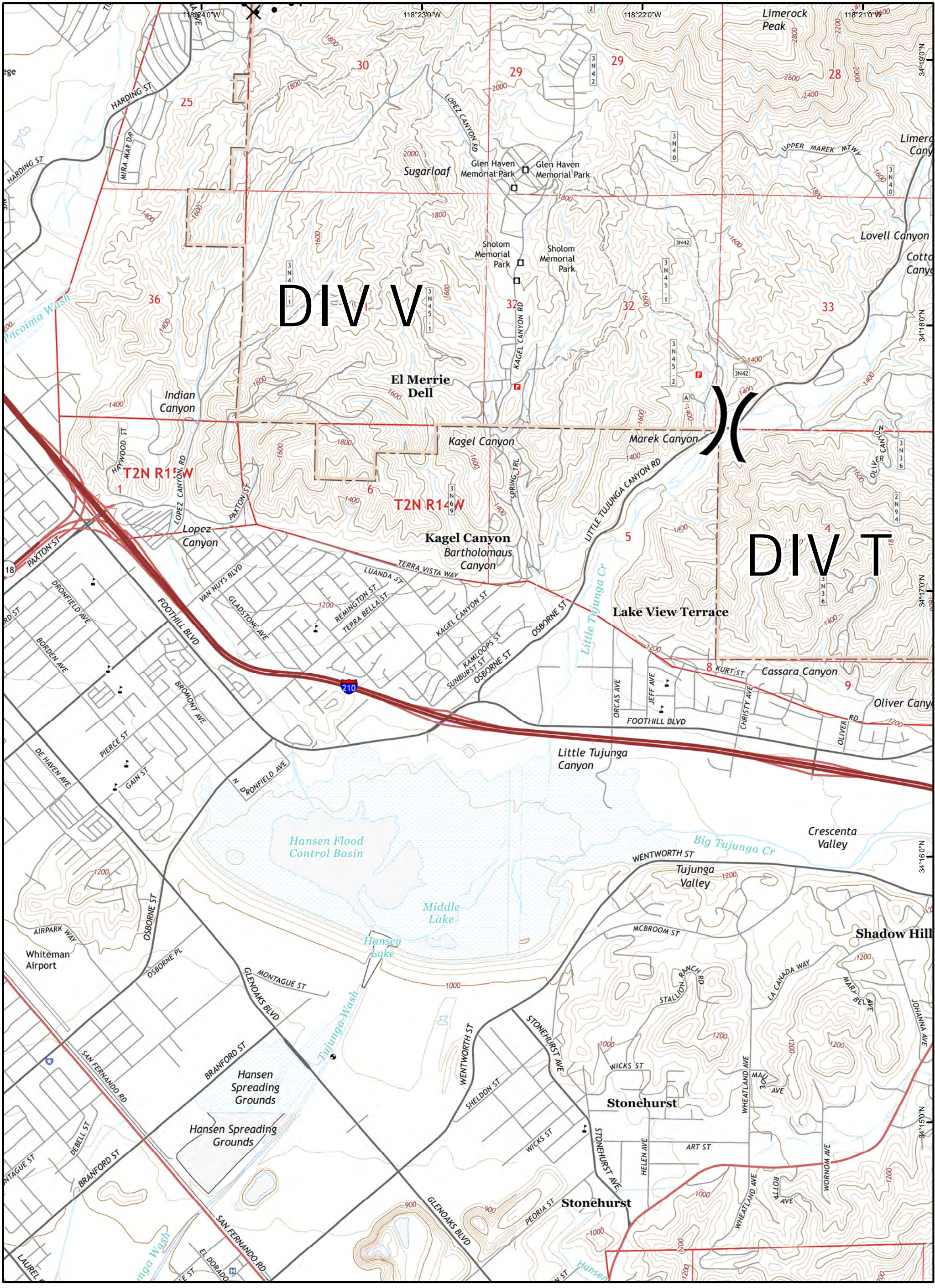
Legend

-) (Division
-][Branch

- Uncontrolled Fire Edge
- Completed Line
- Proposed Dozer Line
- Planned Fire Line

- Dip Site
- Repeater
- Camp
- Drop Point
- Helispot
- HeliBase
- Incident Command Post





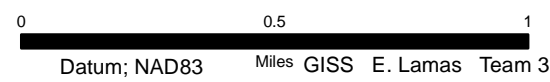
SAND INCIDENT
 JULY 28, 2016 0600 HRS
 CA - ANF - 003008

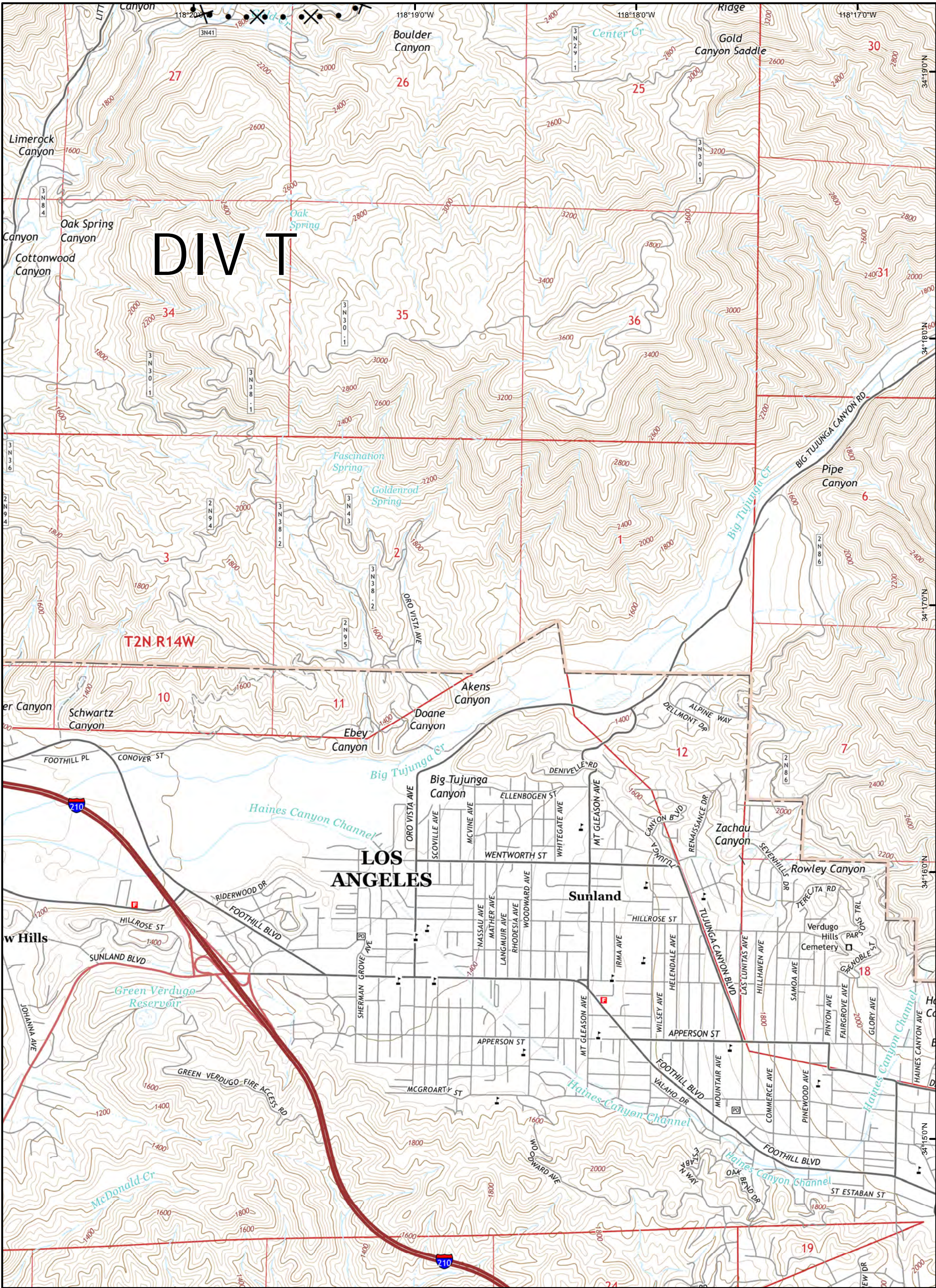
IAP MAP
 Page D2

Legend

- Uncontrolled Fire Edge
- Completed Line
- Proposed Dozer Line
- Planned Fire Line
- Division
- Branch

- Dip Site
- Repeater
- Camp
- Drop Point
- Helispot
- HeliBase
- Incident Command Post





SAND INCIDENT
 JULY 28, 2016 0600 HRS
 CA - ANF - 003008

IAP MAP
 Page D3

Legend

- Uncontrolled Fire Edge
- Completed Line
- Planned Fire Line
- Division
- Branch
- Proposed Dozer Line
- Planned Fire Line
- Dip Site
- Repeater
- Camp
- Drop Point
- Helispot
- HeliBase
- Incident Command Post

0 0.5 1
 Datum; NAD83 Miles GISS E. Lamas Team 3