

Pilot Map
Sand Fire
CA-ANF-003008
0 1/2 1 2 Miles
July 30, 2016

Branch I

DIV A

DIV B

NIFC
C-26

Acton
MRB

Delta
Dip

DIV E

DIV Z

Robinson
Ranch
Dip

NIFC
C-1

DP-18

DP-15

DIV C

H-1

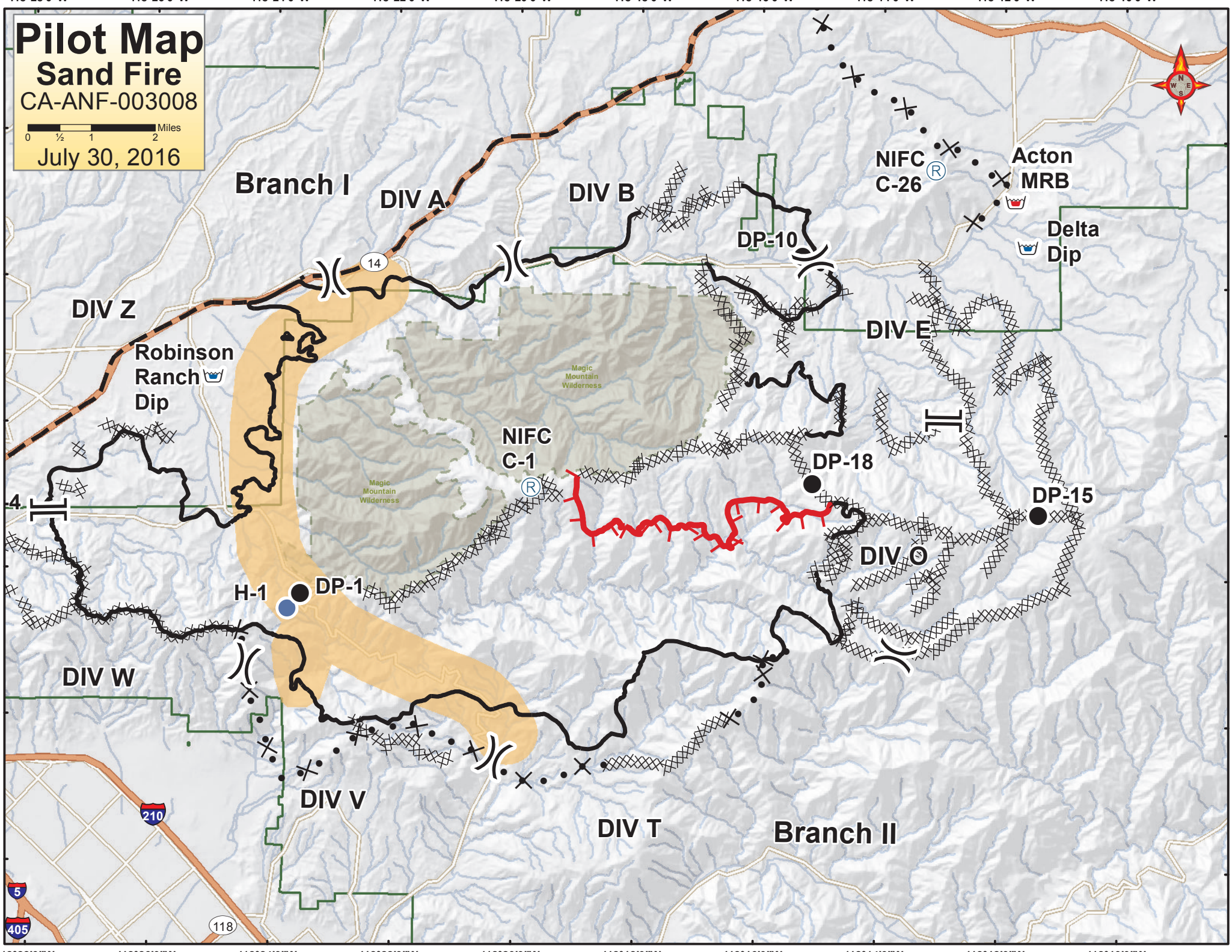
DP-1

DIV W

DIV V

DIV T

Branch II



Label	Type	Long	Lat
H-1	Helispot	118 23.752'W	34 21.489'N
DP-1	Drop Point	118 23.541'W	34 21.69'N
Sand Helibase	Helibase	118 18.871'W	34 30.178'N
DP-4	Drop Point	118 28.725'W	34 22.576'N
DP-10	Drop Point	118 15.317'W	34 26.383'N
ICP	Incident Command Post	118 29.634'W	34 23.99'N
Central Park	Camp	118 31.326'W	34 25.926'N
NIFC C-1	Repeater	118 19.754'W	34 23.191'N
NIFC C-9	Repeater	118 17.026'W	34 13.056'N
NIFC C-26	Repeater	118 13.125'W	34 27.584'N
Delta Dip	Water Source	118 11.59'W	34 26.54'N
Robinson Ranch Dip	Water Source	118 25.018'W	34 24.656'N
DP-15	Drop Point	118 11.375'W	34 22.872'N
DP-18	Drop Point	118 15.11'W	34 23.27'N
Acton MRB	Retardant Base	118 11.8'W	34 27.16'N

[[Branch

) (Division

● Drop Point

⊕ Helibase

● Helispot

👤 Water Dip

▣ ICP

Ⓡ Repeater

Ⓒ Camp

▬ Uncontrolled Fire Edge

XXXXXX Completed Dozer Line

▬ Completed Line

▬ Planned Fire Line

⊗ • • Proposed Dozer Line

■ Edison Power Pole Replacement Area

▭ Administrative Forest

▭ Wilderness

👤 Mobile Retardant Base