

SAND INCIDENT

Aug 2, 2016 - Aug 6, 2016

0600 hrs - 1800 hrs

CA - ANF - 003008

IAP MAP

Page A3

Legend

) (Division

] [Branch

Uncontrolled Fire Edge

Completed Line

Proposed Dozer Line

Planned Fire Line

Mobile Retardant Base

Hazmat

Dip Site

Repeater

Camp

Drop Point

Helispot

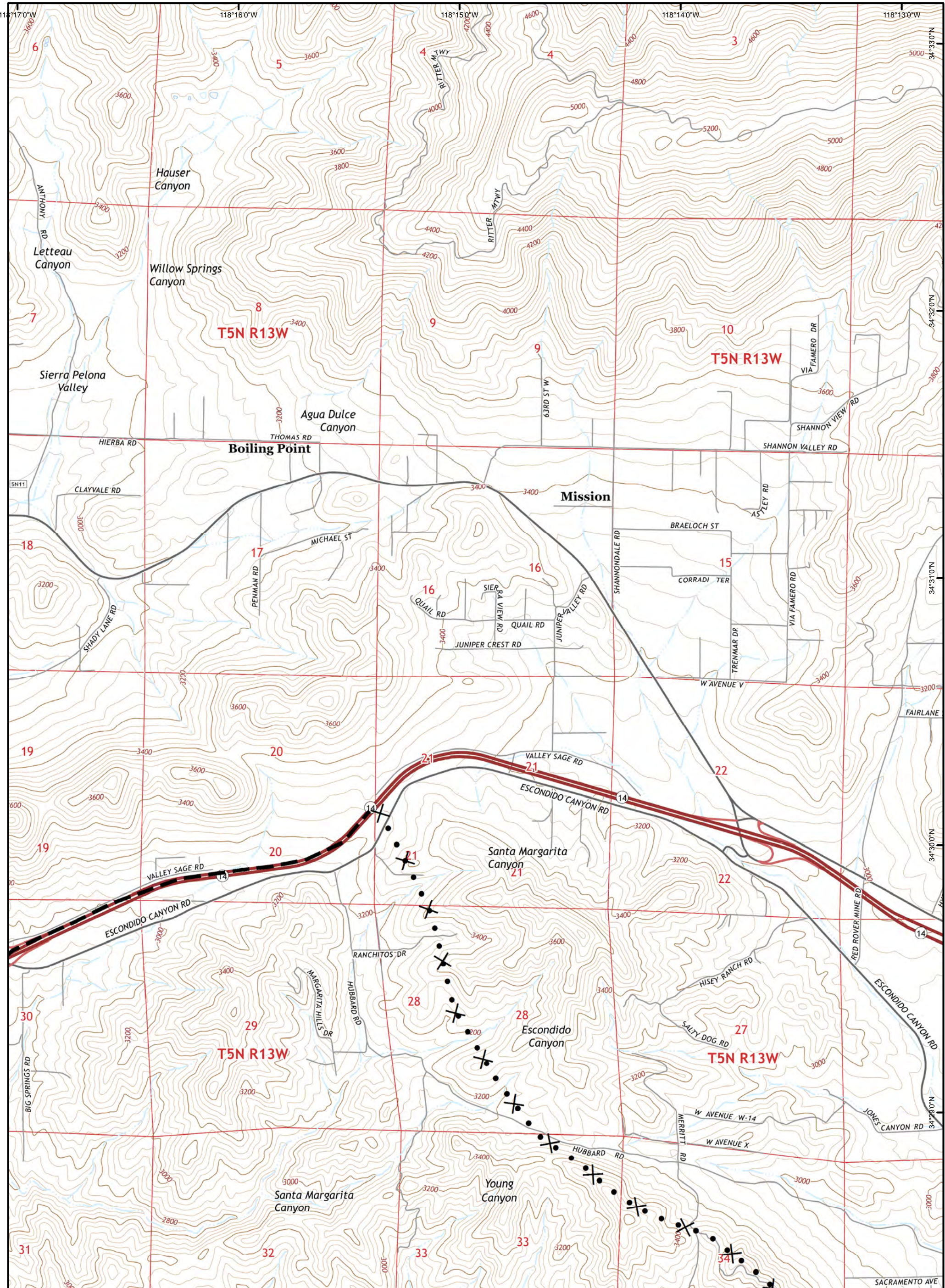
HeliBase

Incident Command Post

0 0.5 1

Datum: NAD83 Miles GISS E. Lamas Team 3





SAND INCIDENT
 Aug 2, 2016 - Aug 6, 2016
 0600 hrs - 1800 hrs
 CA - ANF - 003008

IAP MAP
 Page A4

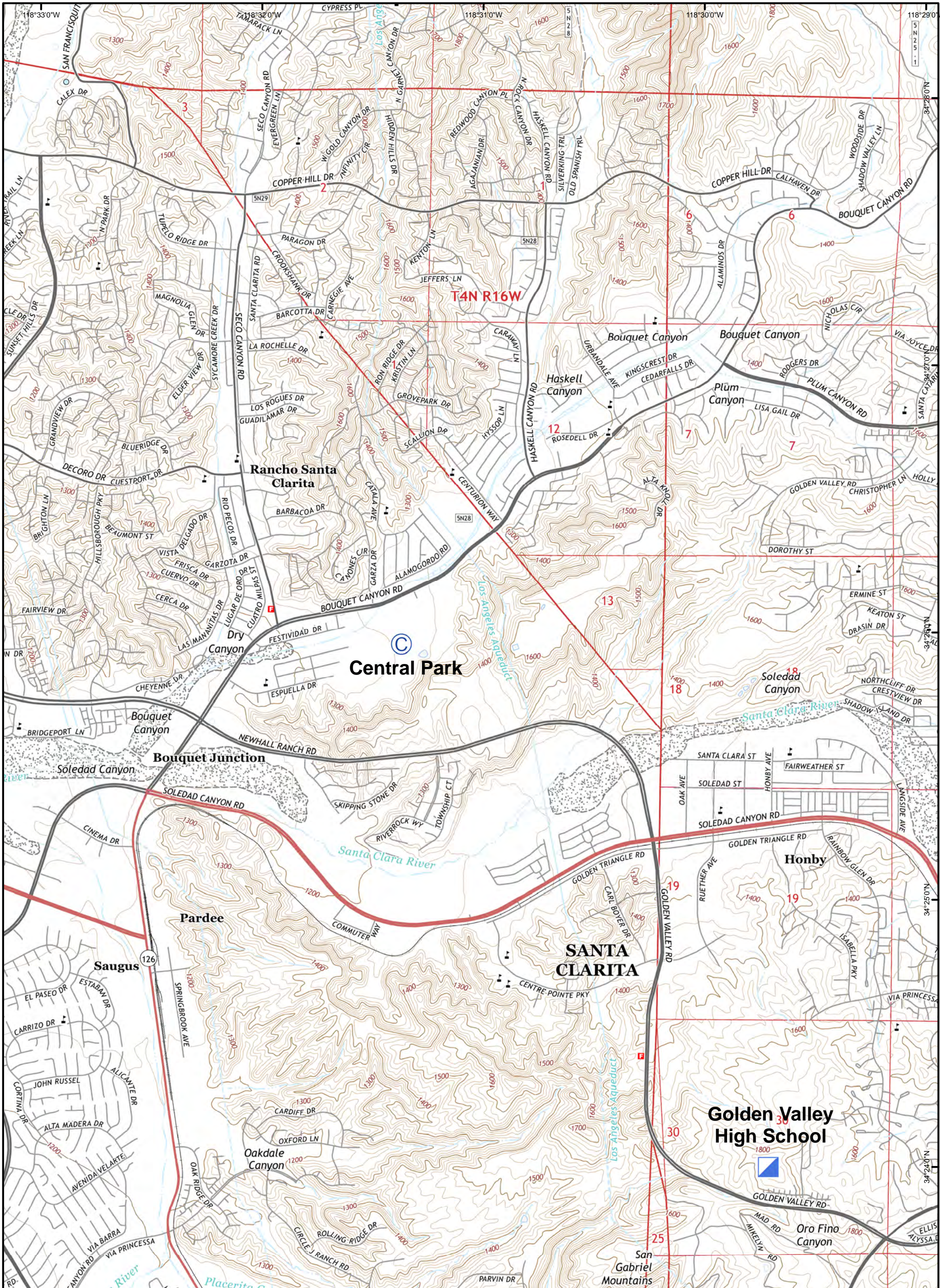
Legend

- Uncontrolled Fire Edge
- Completed Line
- Proposed Dozer Line
- Planned Fire Line
- Hazmat
- Division
- Branch
- Mobile Retardant Base

- Dip Site
- Repeater
- Camp
- Drop Point
- Helispot
- HeliBase
- Incident Command Post

0 0.5 1
 Datum: NAD83 Miles GISS E. Lamas Team 3





SAND INCIDENT

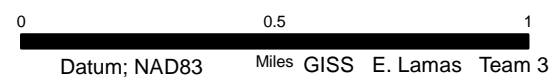
Aug 2, 2016 - Aug 6, 2016
0600 hrs - 1800 hrs
CA - ANF - 003008

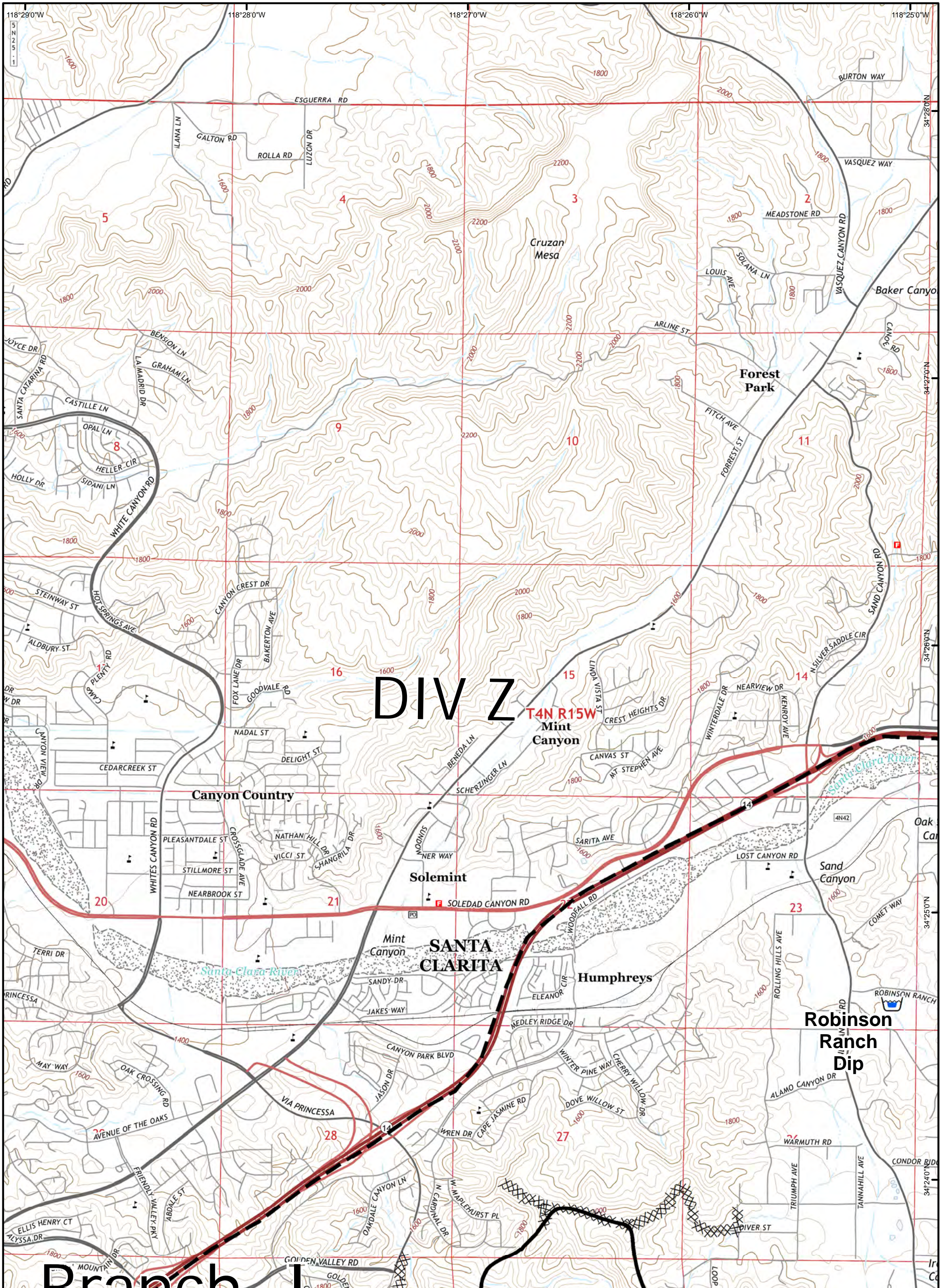
IAP MAP
Page B0

Legend

- Uncontrolled Fire Edge
- Completed Line
- Proposed Dozer Line
- Planned Fire Line
- Mobile Retardant Base
- Hazmat
- Division
- Branch

- Dip Site
- Repeater
- Camp
- Drop Point
- Helispot
- HeliBase
- Incident Command Post





DIV Z
T4N R15W
Mint Canyon

SAND INCIDENT

Aug 2, 2016 - Aug 6, 2016

0600 hrs - 1800 hrs

CA - ANF - 003008

IAP MAP

Page B1

Legend

) (Division

] [Branch

Uncontrolled Fire Edge

Completed Line

Proposed Dozer Line

Planned Fire Line

Mobile Retardant Base

Hazmat

Dip Site

Repeater

Camp

Drop Point

Helispot

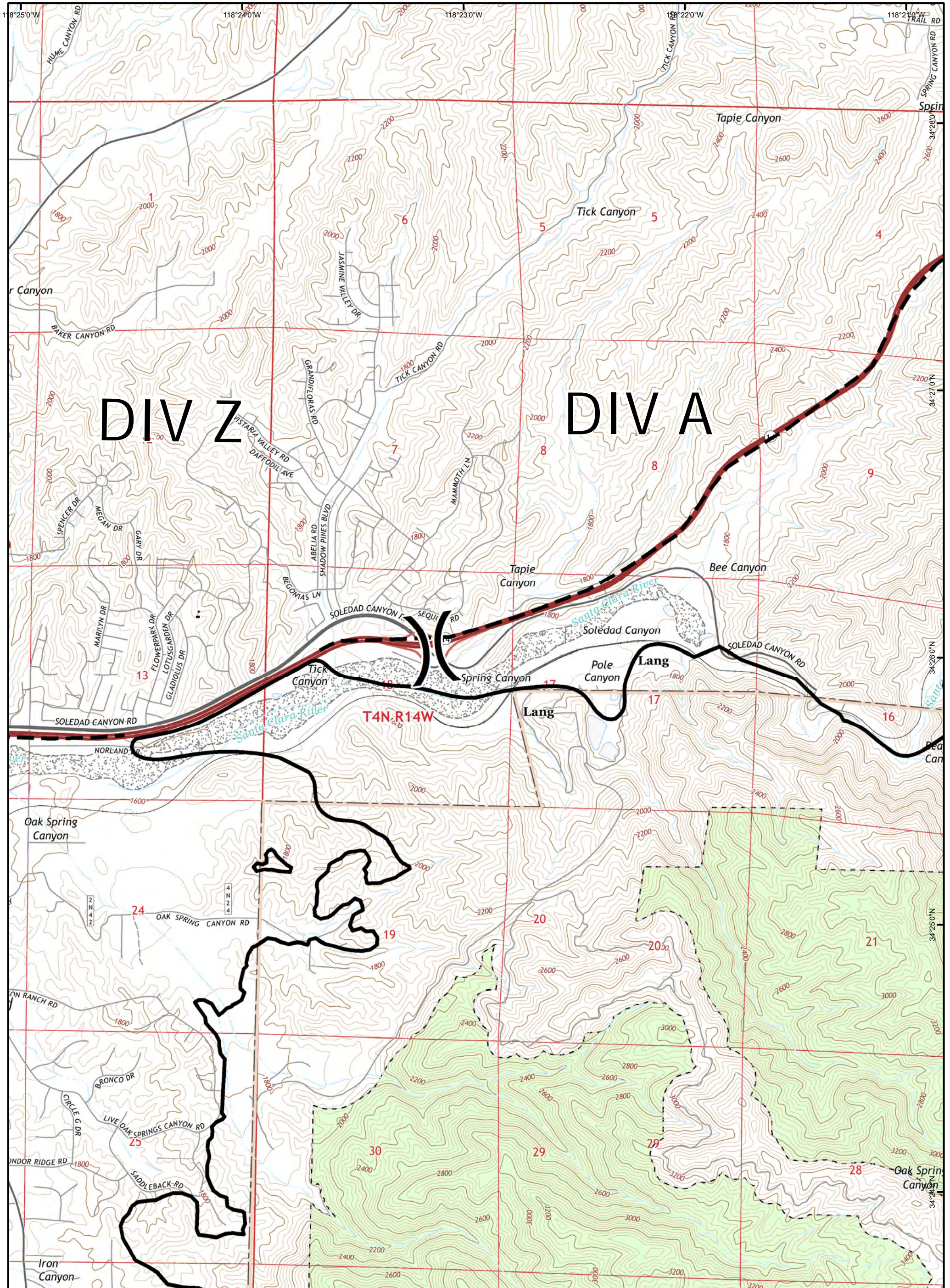
HeliBase

Incident Command Post

0 0.5 1

Datum; NAD83 Miles GISS E. Lamas Team 3





SAND INCIDENT
 Aug 2, 2016 - Aug 6, 2016
 0600 hrs - 1800 hrs
 CA - ANF - 003008

IAP MAP
 Page B2

Legend

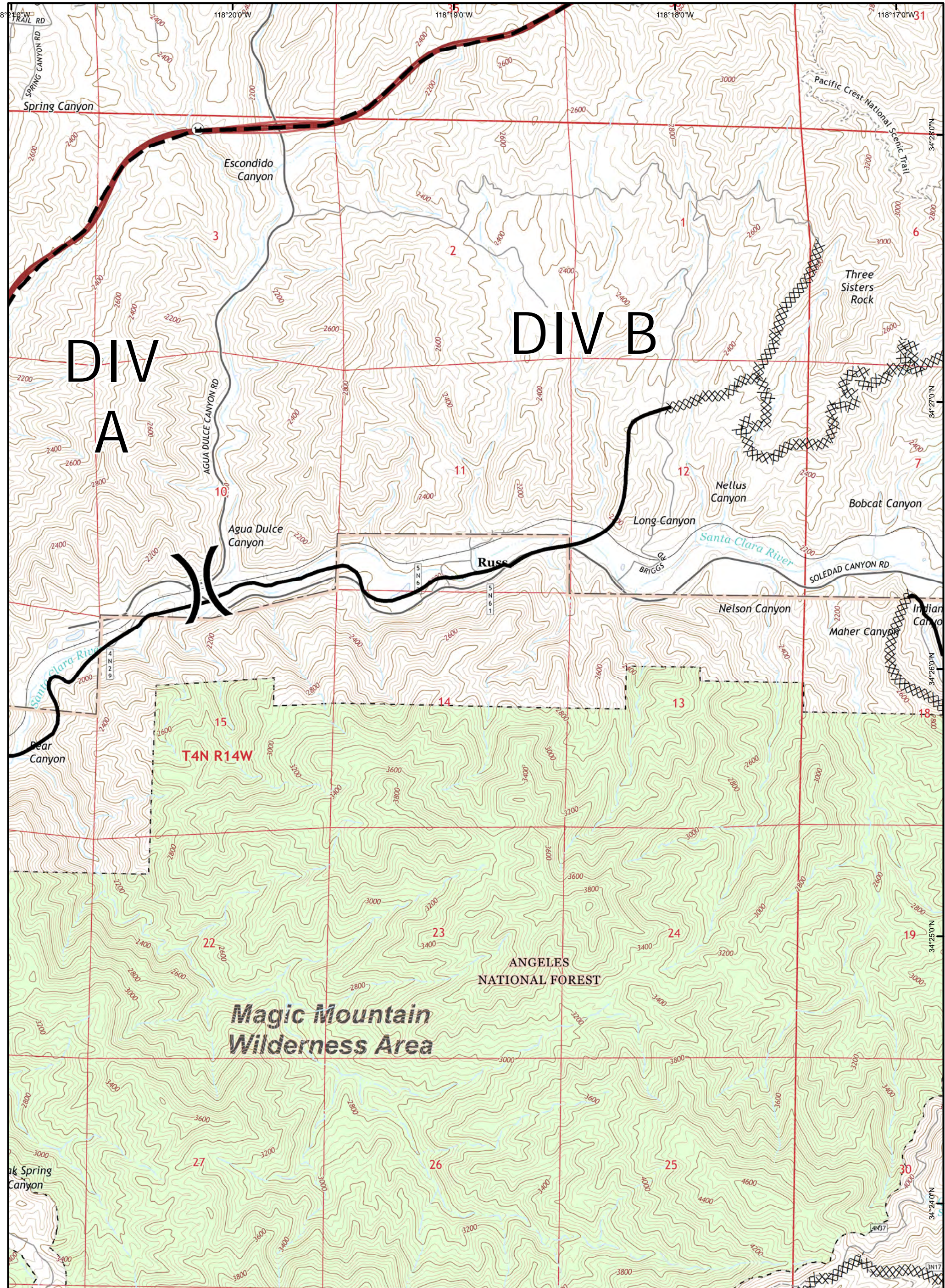
-) (Division
-][Branch

- Uncontrolled Fire Edge
- Completed Line
- Proposed Dozer Line
- Planned Fire Line
- Mobile Retardant Base
- Hazmat

- Dip Site
- Repeater
- Camp
- Drop Point
- Helispot
- HeliBase
- Incident Command Post

0 0.5 1
 Datum; NAD83 Miles GISS E. Lamas Team 3





SAND INCIDENT

Aug 2, 2016 - Aug 6, 2016

0600 hrs - 1800 hrs

CA - ANF - 003008

IAP MAP

Page B3

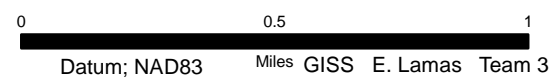
Legend

) (Division

] [Branch

- Uncontrolled Fire Edge
- Completed Line
- Proposed Dozer Line
- Planned Fire Line
- Mobile Retardant Base
- Hazmat

- Dip Site
- Repeater
- Camp
- Drop Point
- Helispot
- HeliBase
- Incident Command Post





DIV B

DIV E

SAND INCIDENT

Aug 2, 2016 - Aug 6, 2016
0600 hrs - 1800 hrs
CA - ANF - 003008

IAP MAP

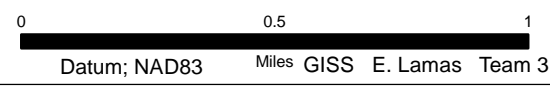
Page B4

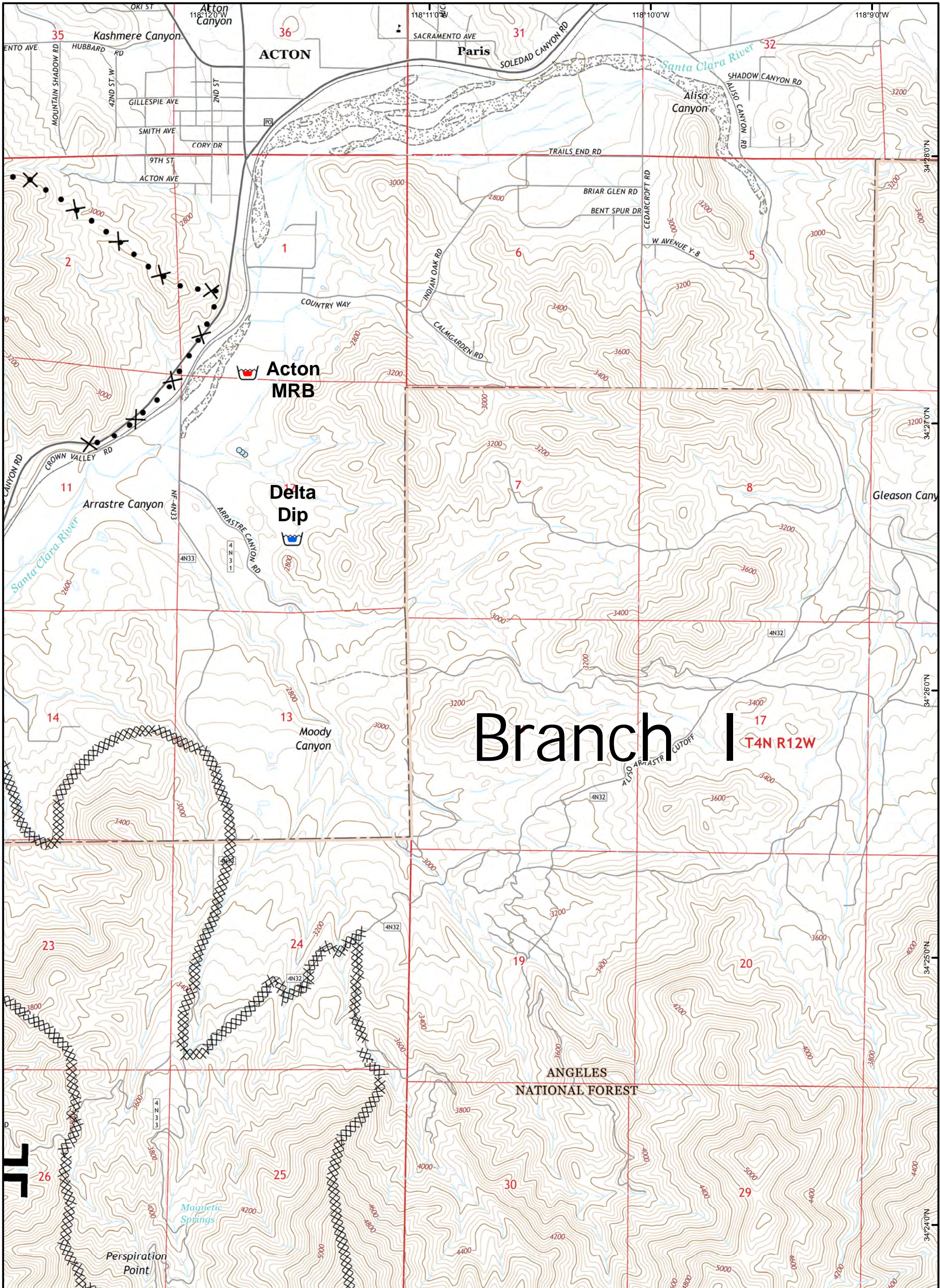
Legend

-) (Division
-][Branch

- Uncontrolled Fire Edge
- Completed Line
- Proposed Dozer Line
- Planned Fire Line
- Mobile Retardant Base
- Hazmat

- Dip Site
- Repeater
- Camp
- Drop Point
- Helispot
- HeliBase
- Incident Command Post





SAND INCIDENT
 Aug 2, 2016 - Aug 6, 2016
 0600 hrs - 1800 hrs
 CA - ANF - 003008
IAP MAP
 Page B5

Legend

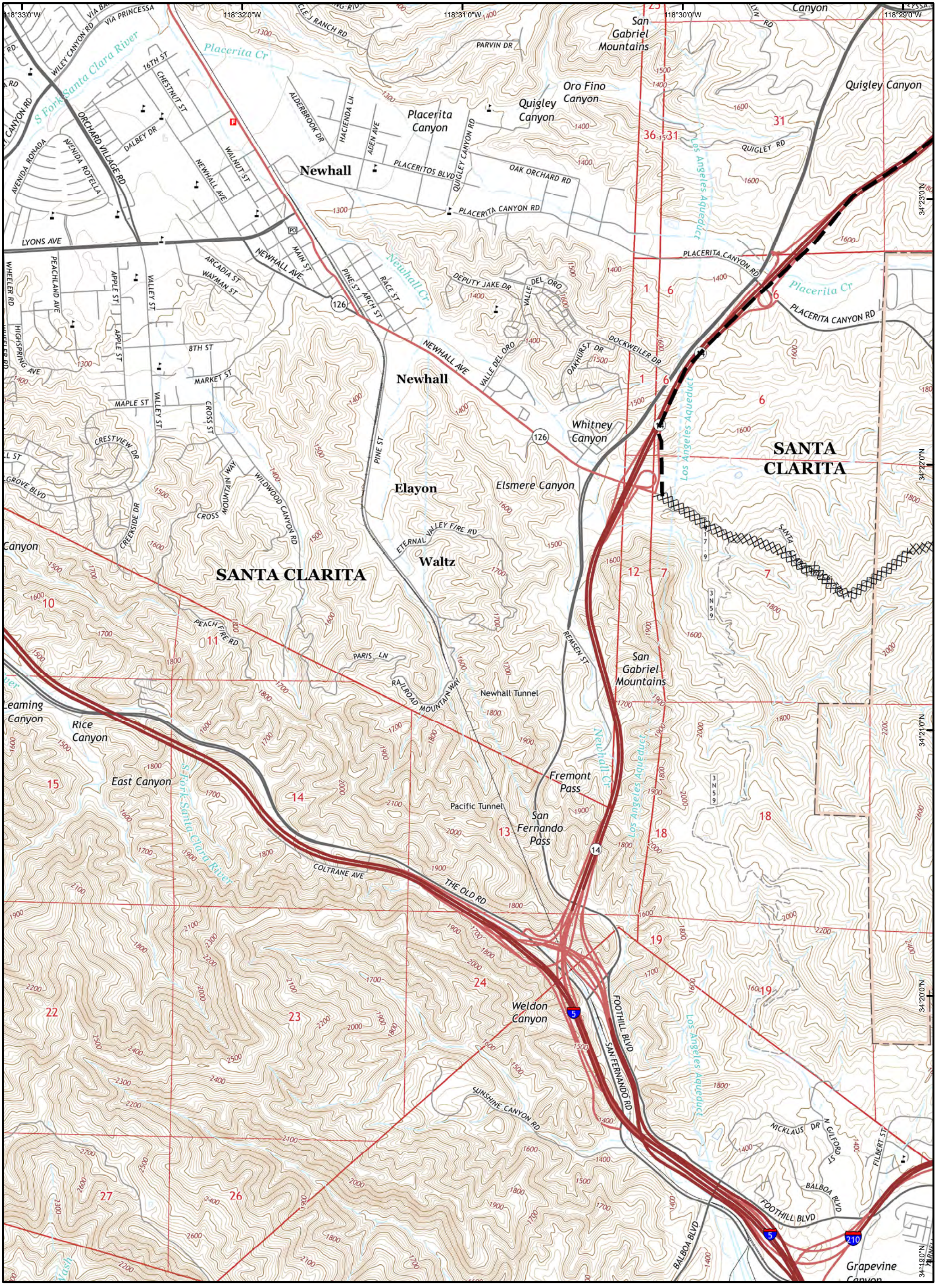
-) (Division
-]] Branch

- Uncontrolled Fire Edge
- Completed Line
- Proposed Dozer Line
- Planned Fire Line
- Mobile Retardant Base
- Hazmat

- Dip Site
- Repeater
- Camp
- Drop Point
- Helispot
- HeliBase
- Incident Command Post

0 0.5 1
 Datum; NAD83 Miles GISS E. Lamas Team 3





SAND INCIDENT
 Aug 2, 2016 - Aug 6, 2016
 0600 hrs - 1800 hrs
 CA - ANF - 003008

IAP MAP
 Page C0

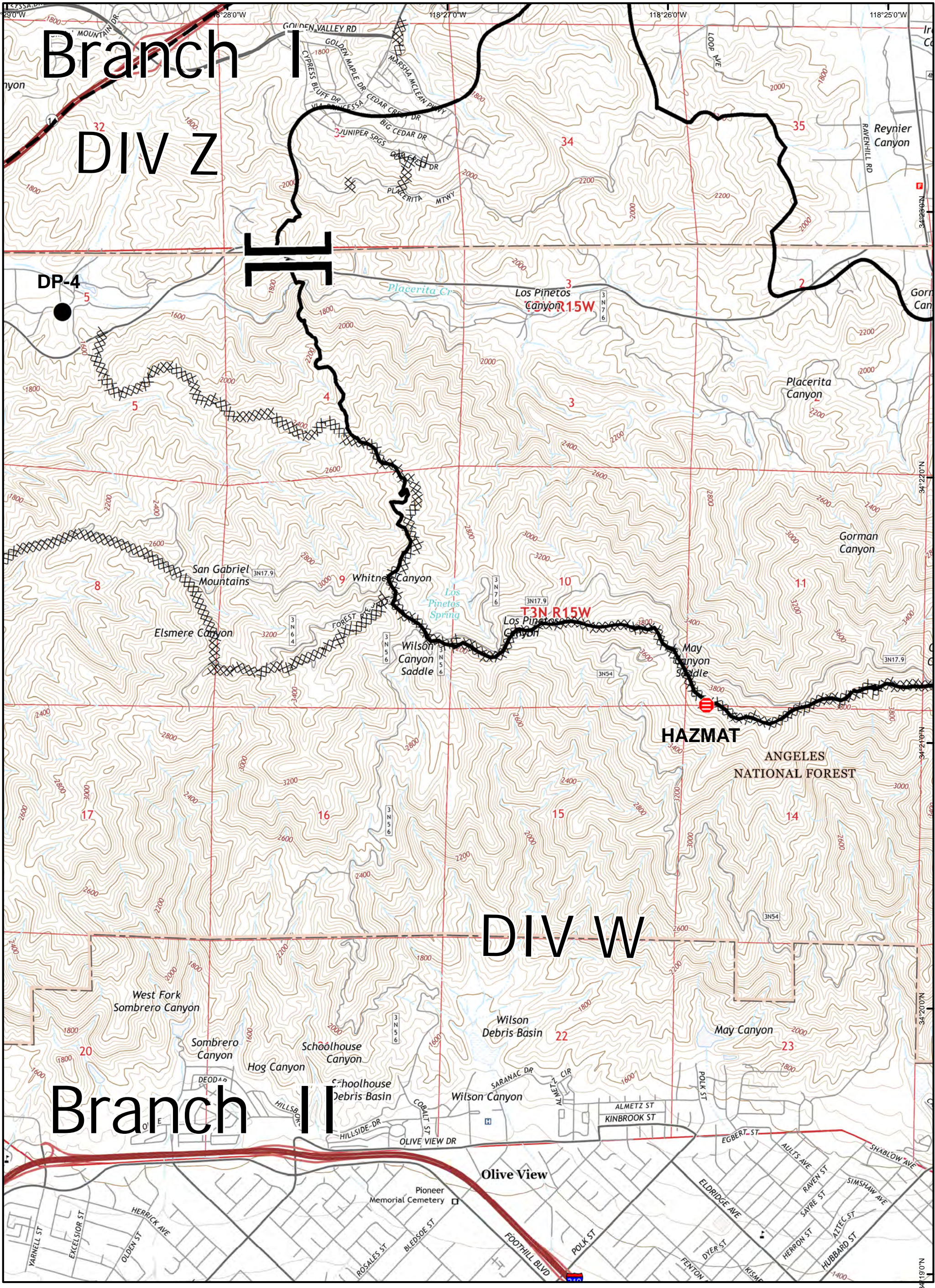
Legend

-) (Division
-][Branch

- Uncontrolled Fire Edge
- Completed Line
- Proposed Dozer Line
- Planned Fire Line
- Mobile Retardant Base
- Hazmat

- Dip Site
- Repeater
- Camp
- Drop Point
- Helispot
- HeliBase
- Incident Command Post

0 0.5 1
 Datum: NAD83 Miles GISS E. Lamas Team 3



Branch I
DIV Z

DIV W

Branch II

SAND INCIDENT
 Aug 2, 2016 - Aug 6, 2016
 0600 hrs - 1800 hrs
 CA - ANF - 003008

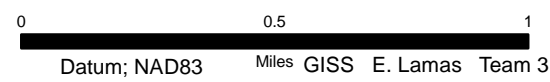
IAP MAP
 Page C1

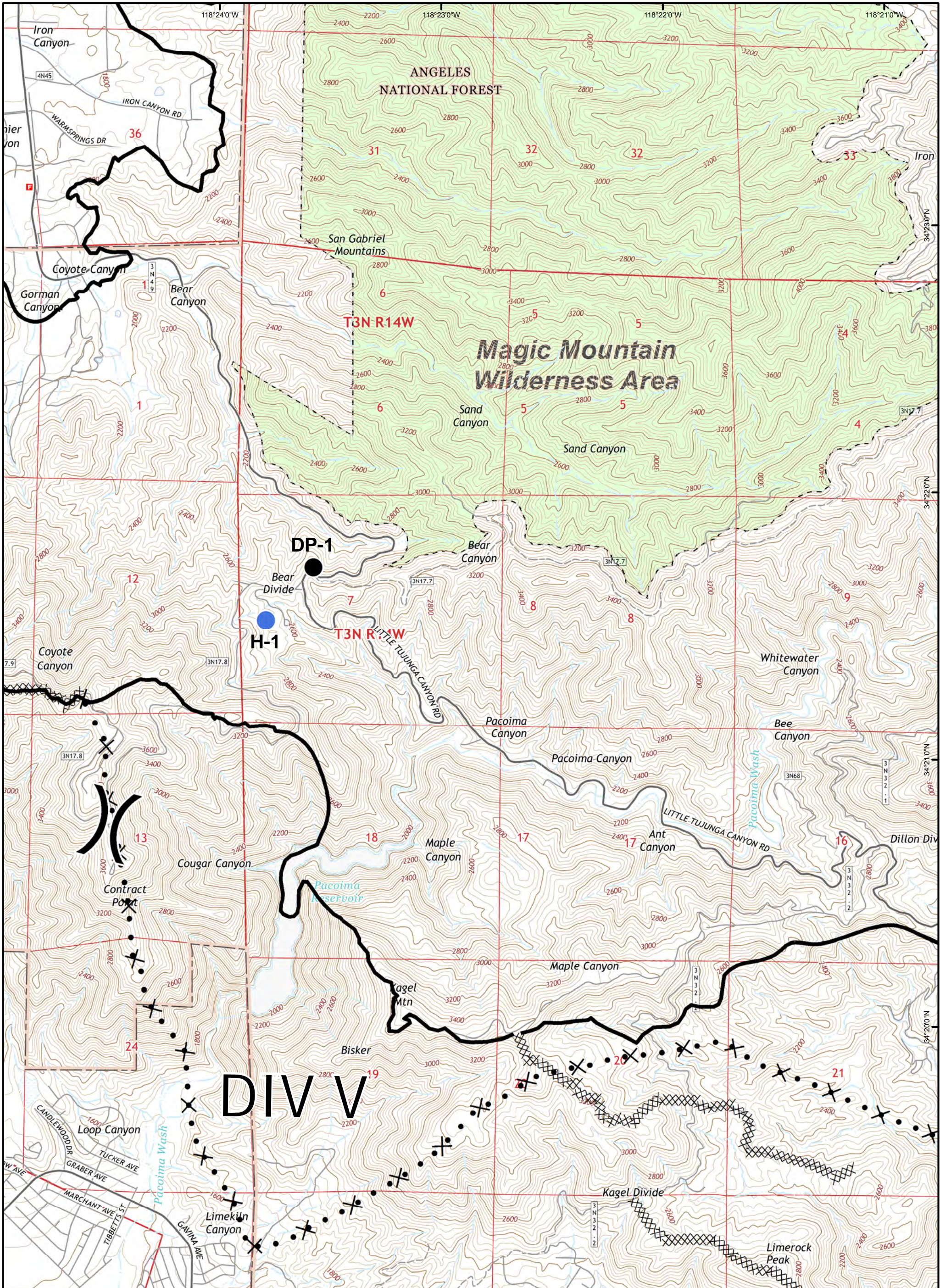
Legend

-) (Division
-]] Branch

- Uncontrolled Fire Edge
- Completed Line
- Proposed Dozer Line
- Planned Fire Line
- Mobile Retardant Base
- Hazmat

- Dip Site
- Repeater
- Camp
- Drop Point
- Helispot
- HeliBase
- Incident Command Post





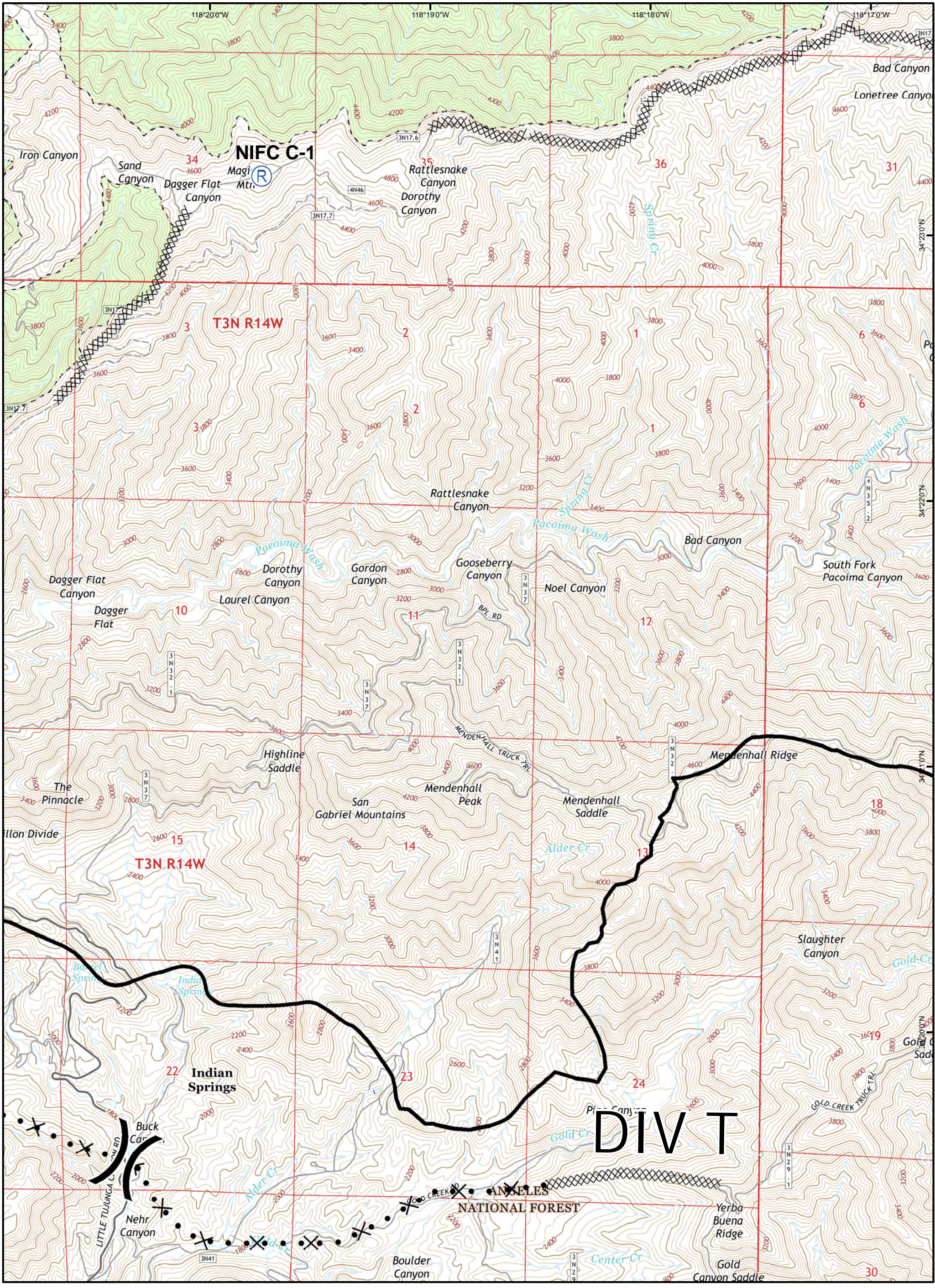
SAND INCIDENT
 Aug 2, 2016 - Aug 6, 2016
 0600 hrs - 1800 hrs
 CA - ANF - 003008

IAP MAP
 Page C2

Legend

- | | | | |
|--|------------------------|--|-----------------------|
| | Uncontrolled Fire Edge | | Dip Site |
| | Completed Line | | Repeater |
| | Proposed Dozer Line | | Camp |
| | Planned Fire Line | | Drop Point |
| | Mobile Retardant Base | | Helispot |
| | Hazmat | | HeliBase |
| | Division | | Incident Command Post |
| | Branch | | |

0 0.5 1
 Datum: NAD83 Miles GISS E. Lamas Team 3



SAND INCIDENT
 Aug 2, 2016 - Aug 6, 2016
 0600 hrs - 1800 hrs
 CA - ANF - 003008

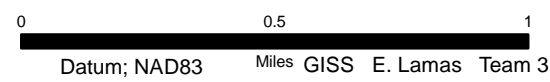
IAP MAP
 Page C3

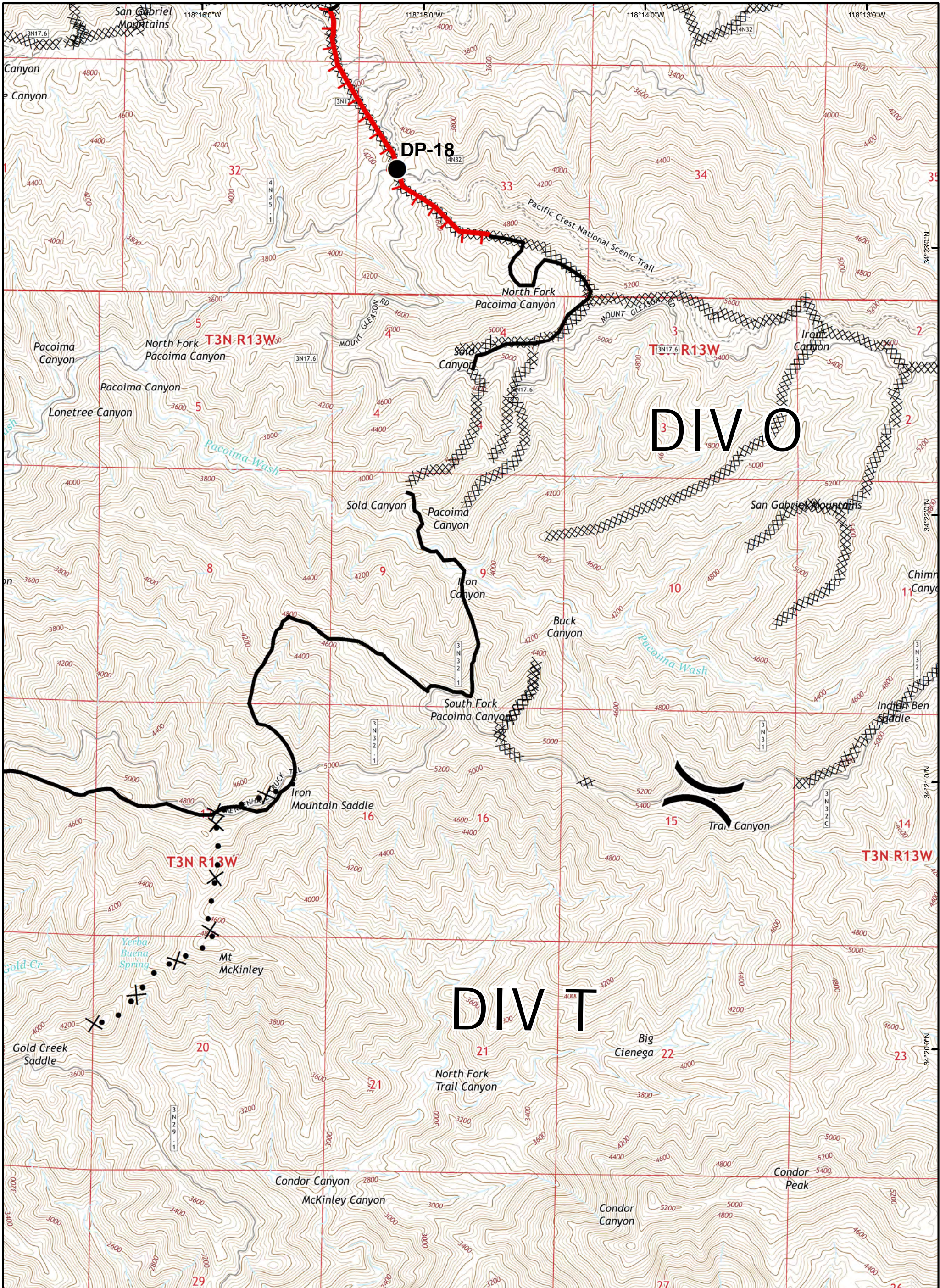
Legend

-) (Division
-][Branch

- Uncontrolled Fire Edge
- Completed Line
- Proposed Dozer Line
- Planned Fire Line
- Mobile Retardant Base
- Hazmat

- Dip Site
- Repeater
- Camp
- Drop Point
- Helispot
- HeliBase
- Incident Command Post



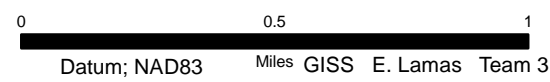


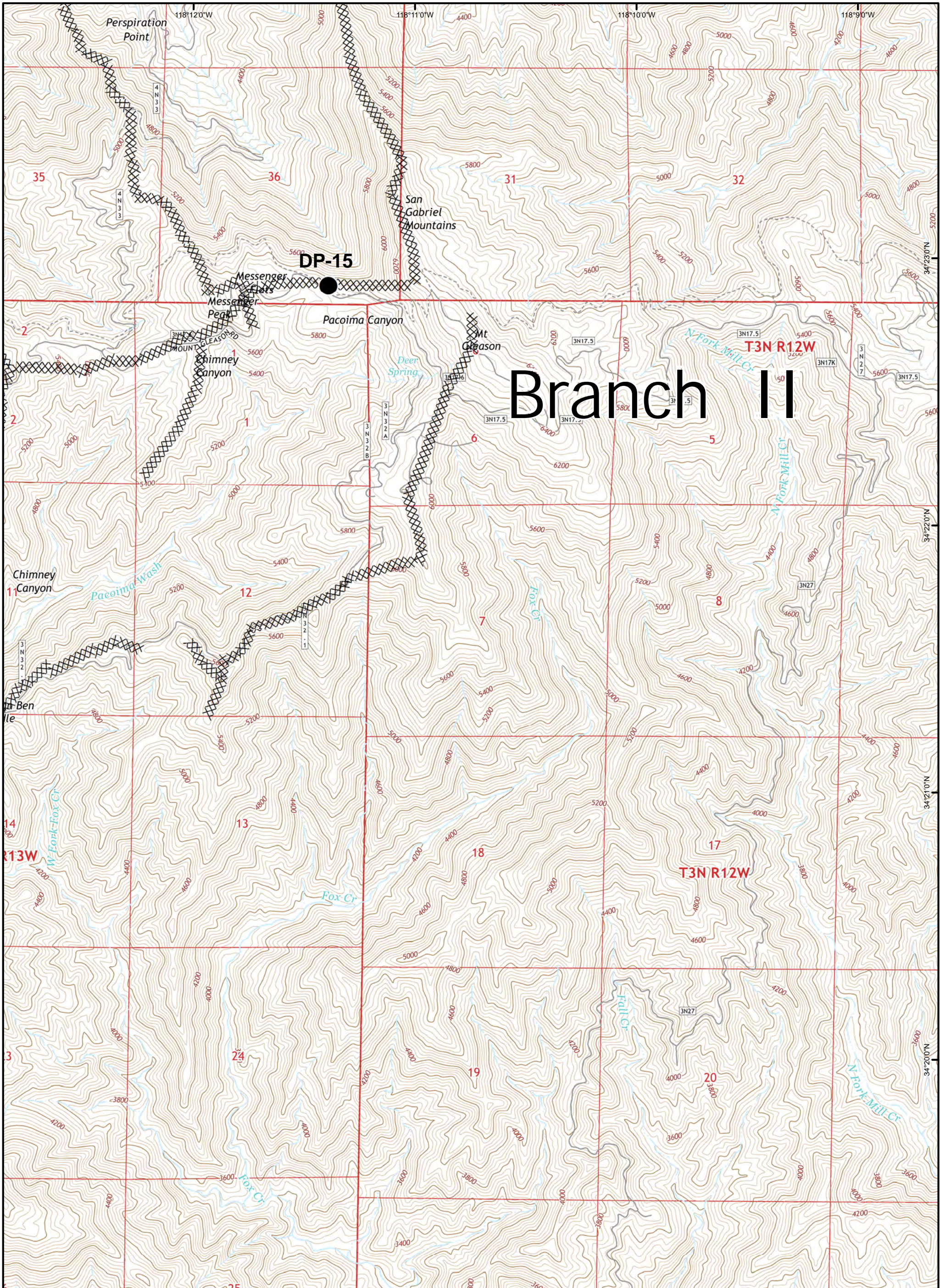
SAND INCIDENT
 Aug 2, 2016 - Aug 6, 2016
 0600 hrs - 1800 hrs
 CA - ANF - 003008

IAP MAP
 Page C4

Legend

- | | | | |
|--|------------------------|--|-----------------------|
| | Uncontrolled Fire Edge | | Dip Site |
| | Completed Line | | Repeater |
| | Proposed Dozer Line | | Camp |
| | Planned Fire Line | | Drop Point |
| | Mobile Retardant Base | | Helispot |
| | Hazmat | | HeliBase |
| | | | Incident Command Post |




















SAND INCIDENT
 Aug 2, 2016 - Aug 6, 2016
 0600 hrs - 1800 hrs
 CA - ANF - 003008

IAP MAP
 Page C5

Legend

-  Uncontrolled Fire Edge
-  Completed Line
-  Proposed Dozer Line
-  Planned Fire Line
-  Mobile Retardant Base
-  Hazmat
-  Dip Site
-  Repeater
-  Camp
-  Drop Point
-  Helispot
-  HeliBase
-  Incident Command Post
-  Division
-  Branch

