

Pilot Fire

CA-BDF-0010205
Incident Action Plan
Map

August 14, 2016

Page 1 of 3



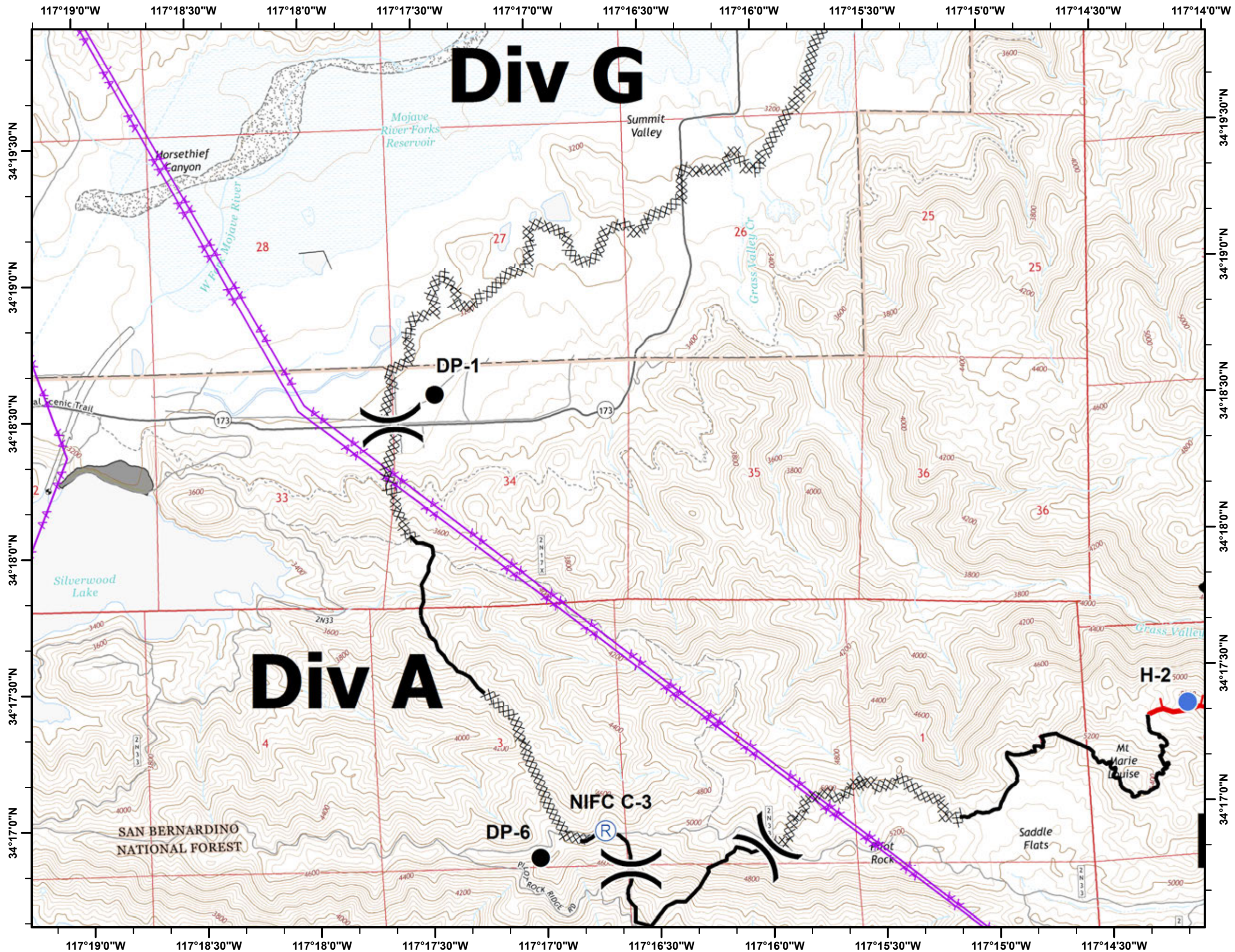
Legend

- () Division
- Uncontrolled Fire Edge
- Completed Line
- Completed Dozer Line
- Incident Base
- Repeater
- Drop Point
- Helispot
- Transmission Lines



Miles
0.25 0 0.25 0.5

E. Lamas, GISS TEAM 3



Pilot Fire

CA-BDF-0010205
Incident Action Plan
Map

August 14, 2016

Page 2 of 3



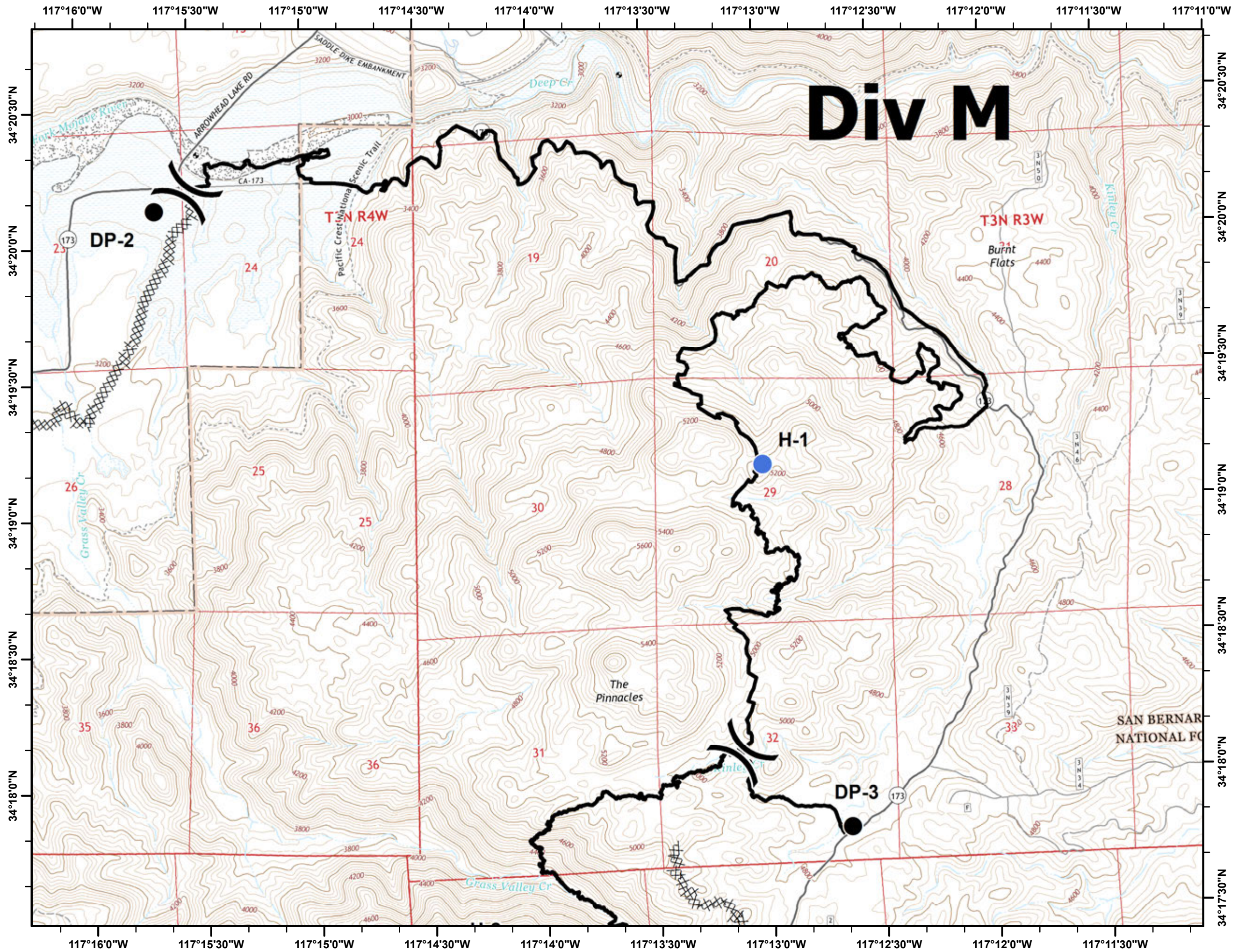
Legend

- Division
- Uncontrolled Fire Edge
- Completed Line
- Completed Dozer Line
- Incident Base
- Repeater
- Drop Point
- Helispot
- Transmission Lines



Miles
0.25 0 0.25 0.5

E. Lamas, GISS TEAM 3



Pilot Fire

CA-BDF-0010205
Incident Action Plan
Map

August 14, 2016

Page 3 of 3



Legend

- () Division
- Uncontrolled Fire Edge
- Completed Line
- Completed Dozer Line
- Incident Base
- Repeater
- Drop Point
- Helispot
- Transmission Lines



Miles
0.25 0 0.25 0.5

E. Lamas, GISS TEAM 3

