

# Pilot Fire

CA-BDF-0010205  
Incident Action Plan  
Map

August 15, 2016



## Legend

- Division
- Uncontrolled Fire Edge
- Completed Line
- Completed Dozer Line
- Incident Base
- Repeater
- Drop Point
- Helispot
- Transmission Lines

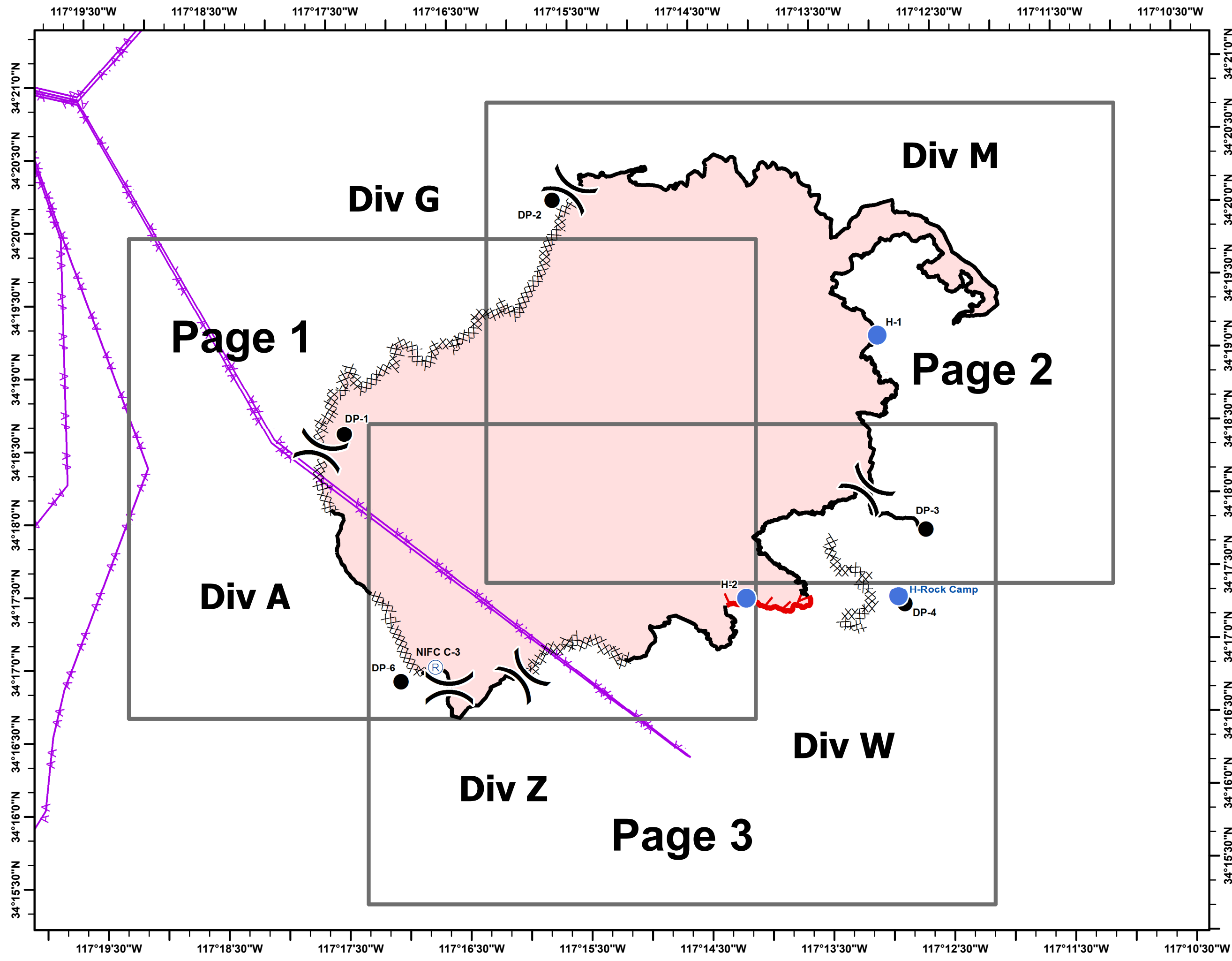


Datum NAD 83

Miles



E. Lamas, GISS TEAM 3





# Pilot Fire

CA-BDF-0010205  
Incident Action Plan  
Map

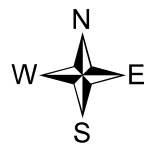
August 15, 2016

Page 1 of 3



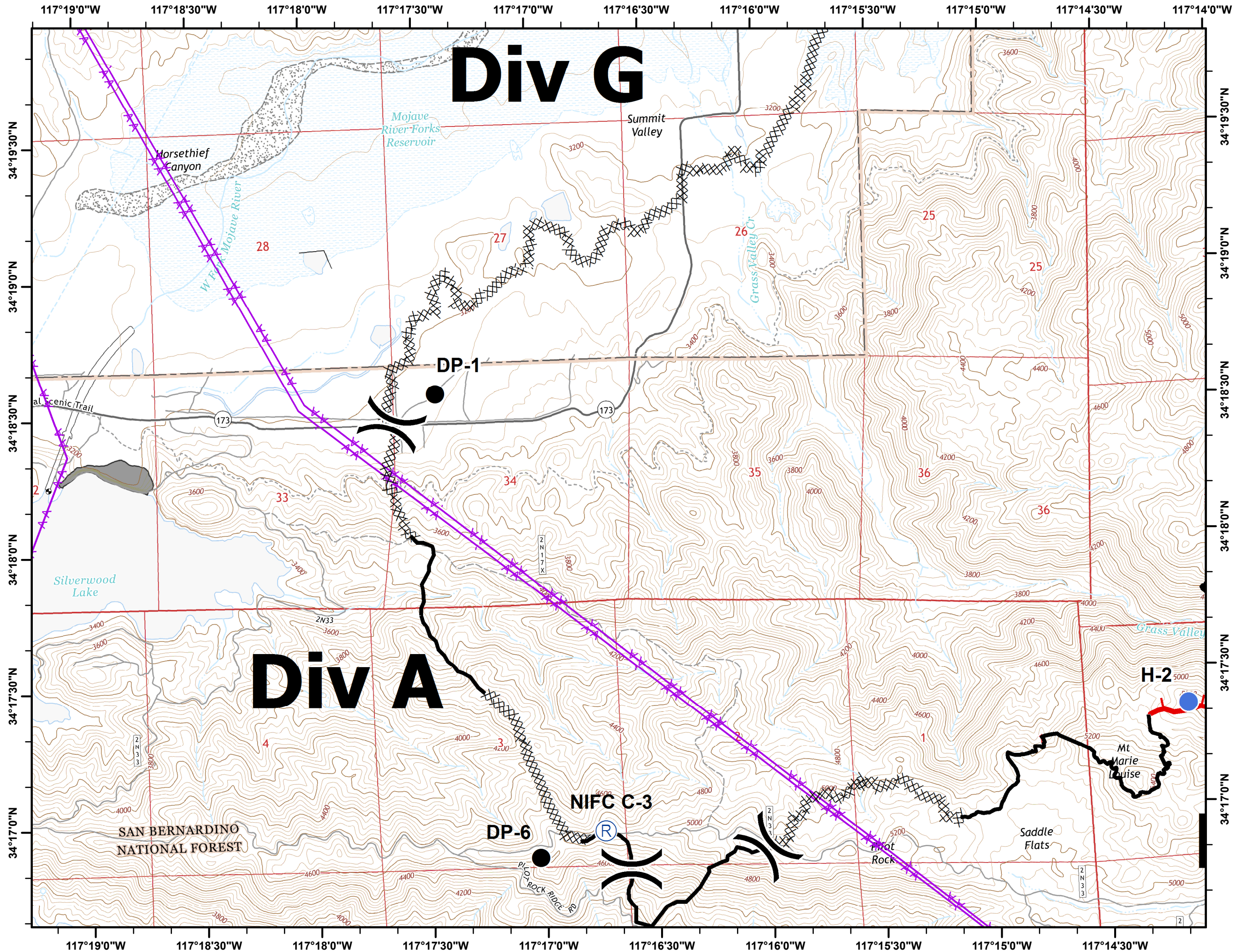
## Legend

- ( ) Division
- Uncontrolled Fire Edge
- Completed Line
- Completed Dozer Line
- (B) Incident Base
- (R) Repeater
- Drop Point
- Helispot
- Transmission Lines



Miles  
0.25 0 0.25 0.5

E. Lamas, GISS TEAM 3





# Pilot Fire

CA-BDF-0010205  
Incident Action Plan  
Map

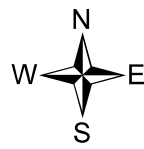
August 15, 2016

Page 2 of 3



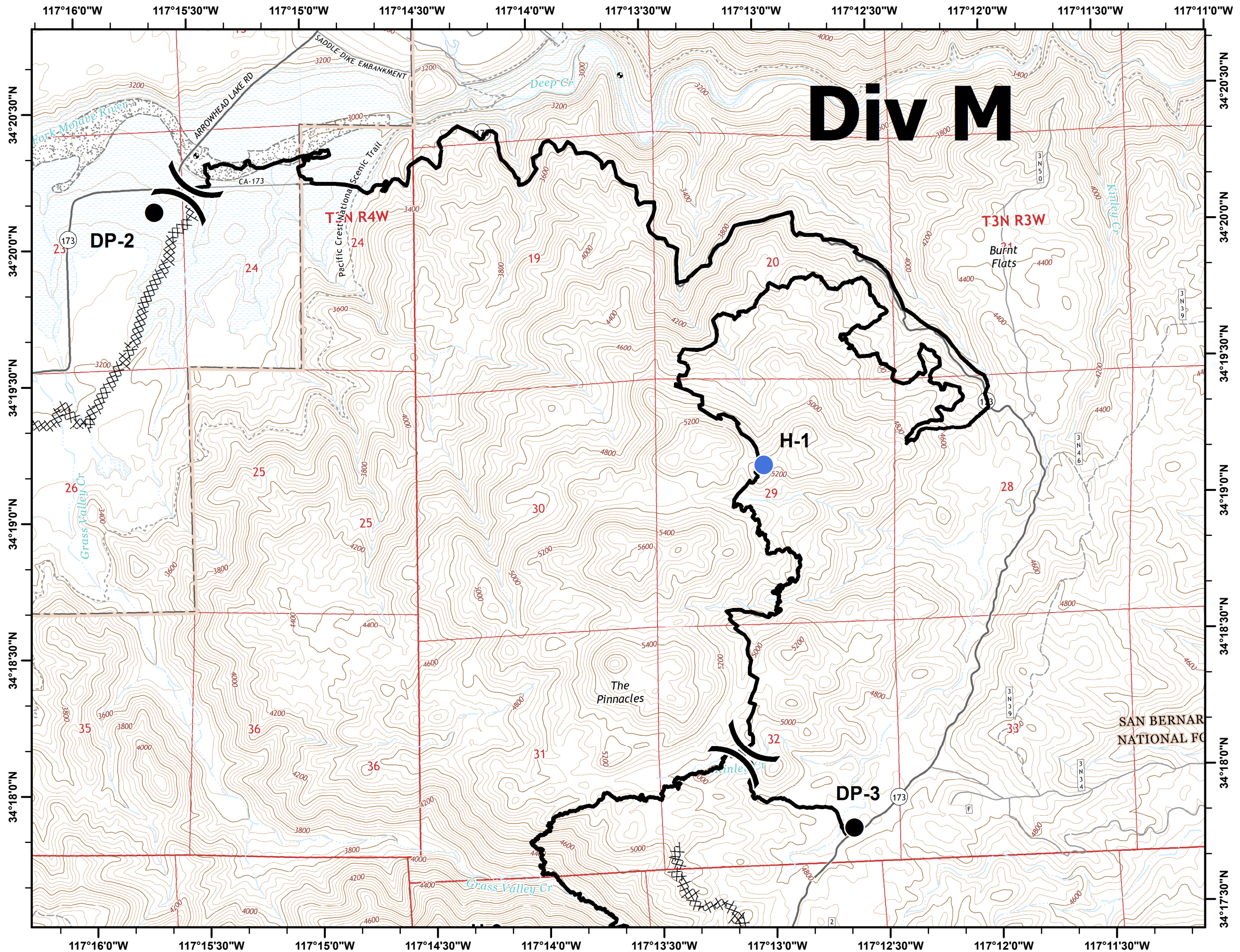
## Legend

- ( ) Division
- Uncontrolled Fire Edge
- Completed Line
- Completed Dozer Line
- (B) Incident Base
- (R) Repeater
- Drop Point
- Helispot
- Transmission Lines



Miles  
0.25 0 0.25 0.5

E. Lamas, GISS TEAM 3





# Pilot Fire

CA-BDF-0010205  
Incident Action Plan  
Map

August 15, 2016

Page 3 of 3

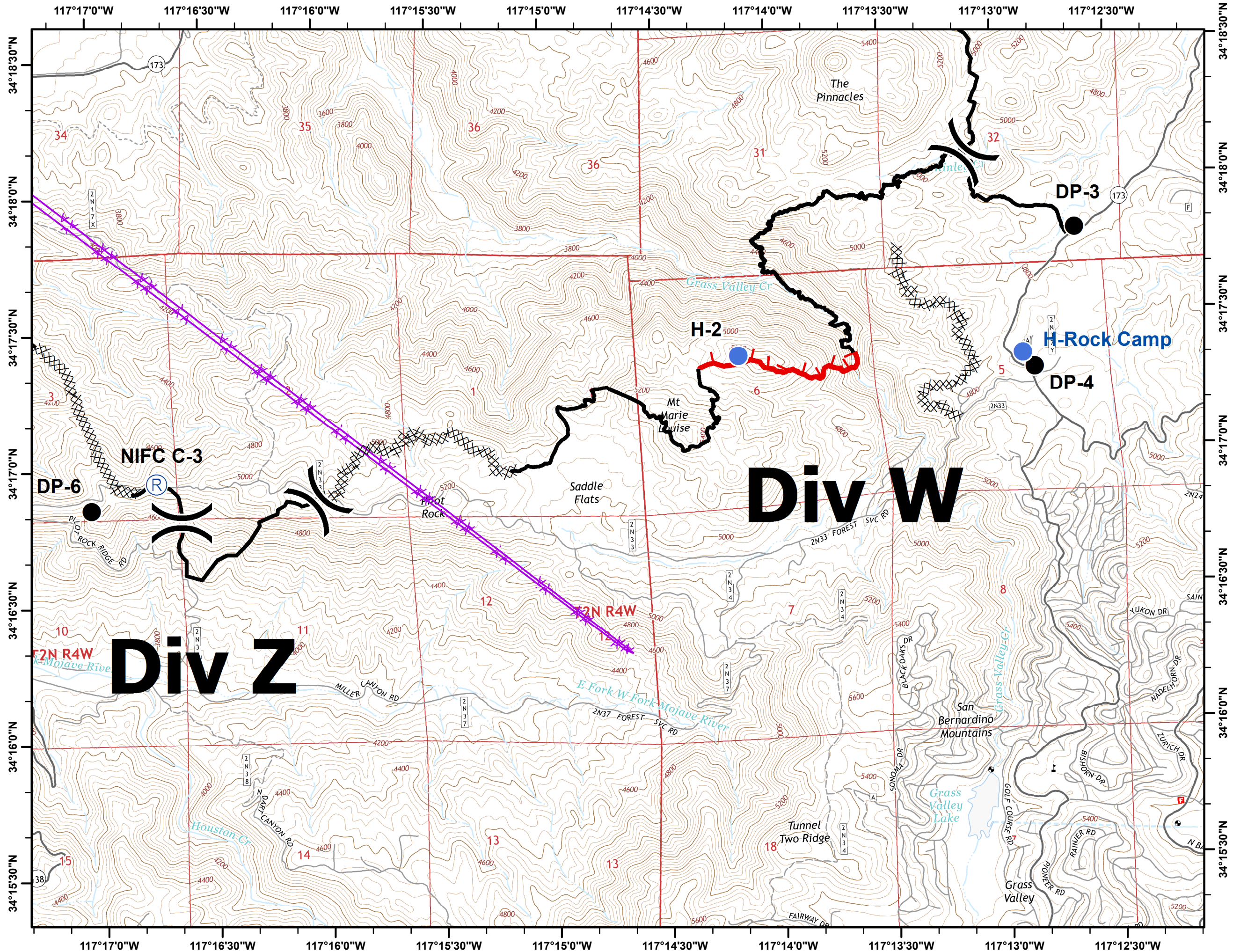


## Legend

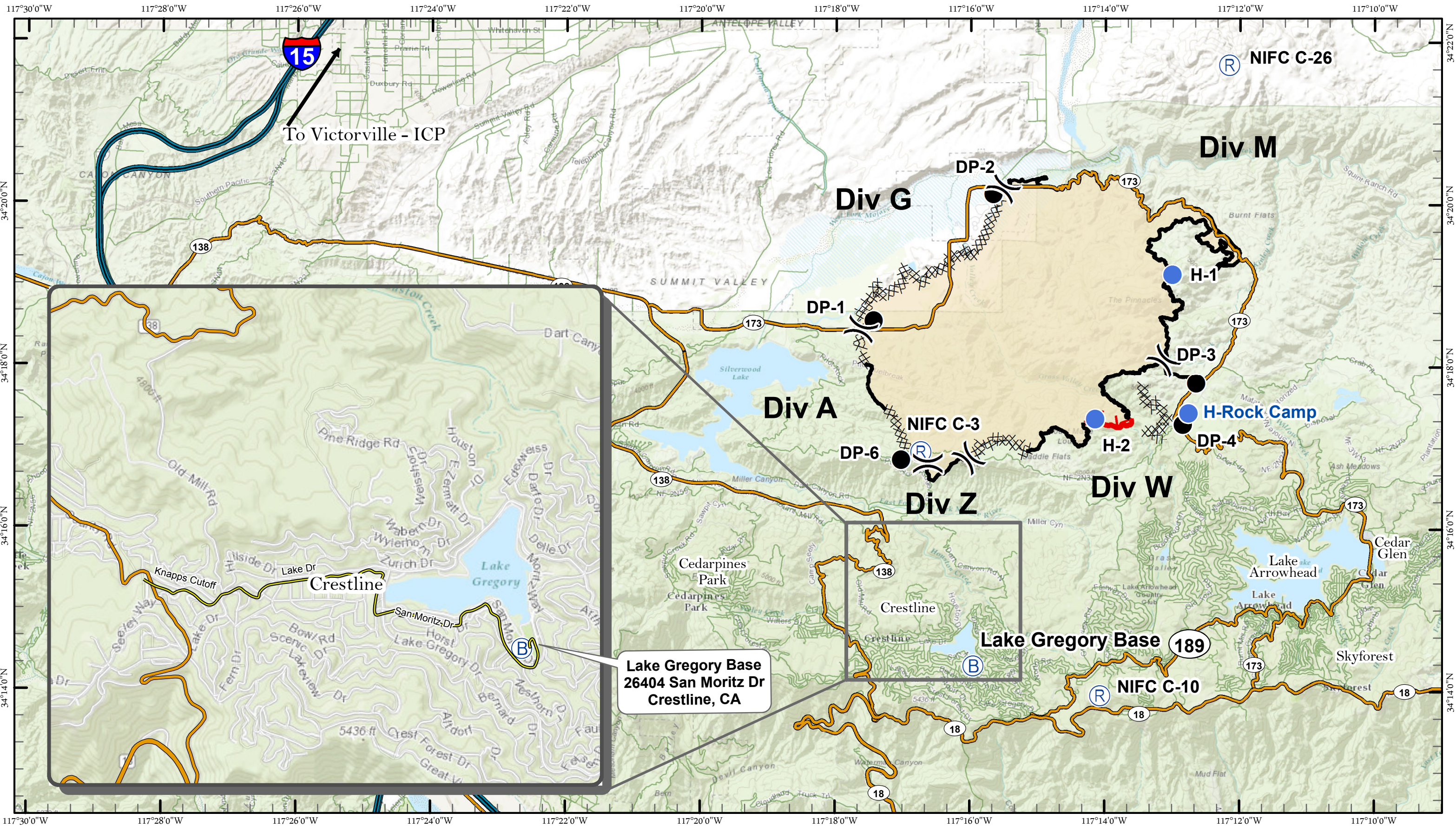
- ( ) Division
- Uncontrolled Fire Edge
- Completed Line
- Completed Dozer Line
- (B) Incident Base
- (R) Repeater
- Drop Point
- Helispot
- Transmission Lines



E. Lamas, GISS TEAM 3







**Pilot Fire**  
 CA-BDF-0010205  
 August 15, 2016

**Transportation Map**

- Interstate
- Highway

- Drop Point
- Incident Base
- Repeater
- FirePolygon

- Completed Line
- Completed Dozer Line
- Uncontrolled Fire Edge



1:80,000  
 NAD 83

