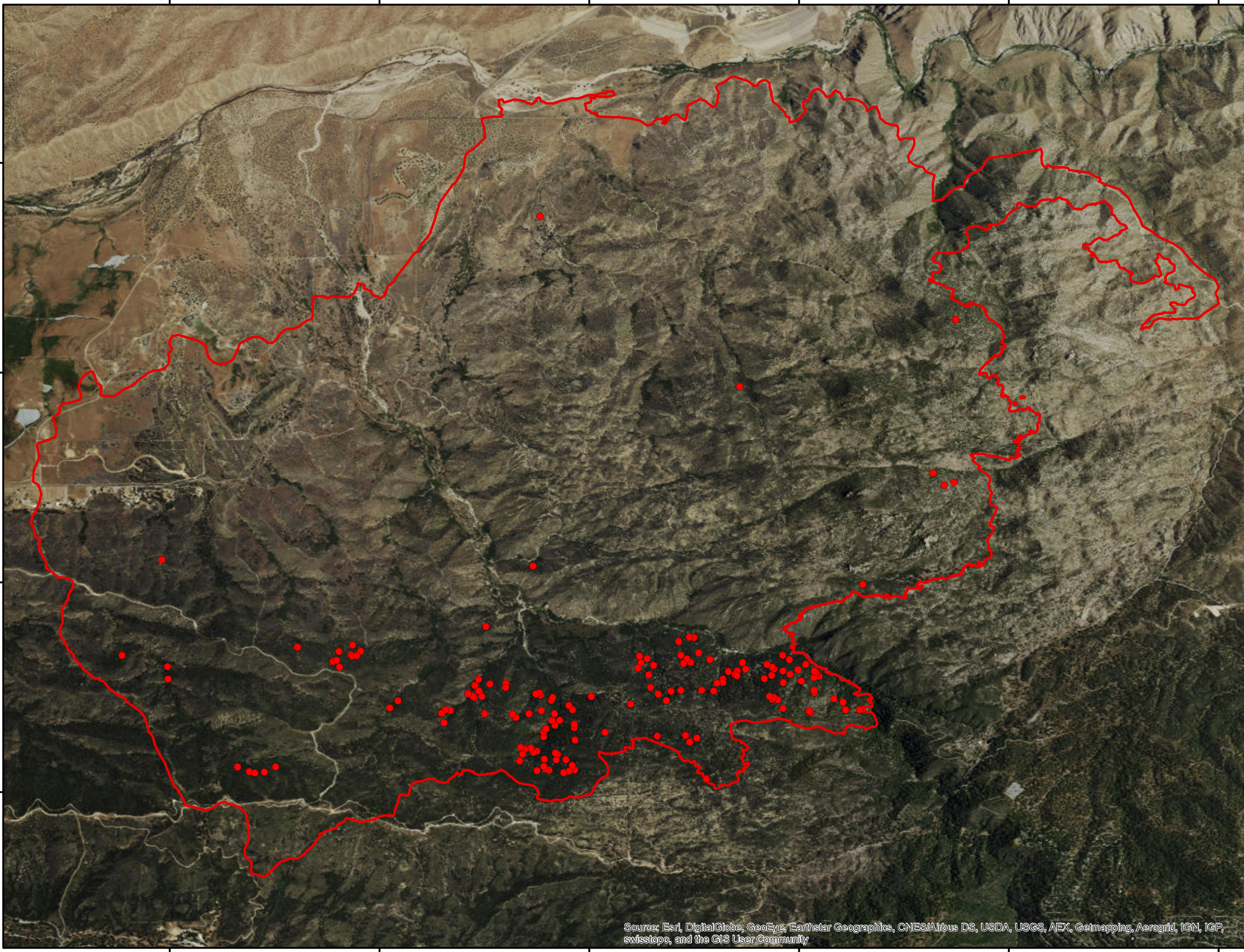






117°17'W 117°16'W 117°15'W 117°14'W 117°13'W 117°12'W

34°20'N
34°19'N
34°18'N
34°17'N

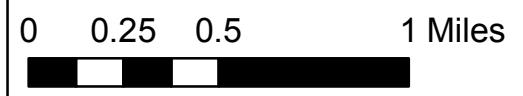


Pilot Fire CA-BDF-010205 Infrared Heat Sources

1:32,000

-  Heat Perimeter
-  Intense Heat Areas
-  Scattered Heat Areas
-  Isolated Heat Sources

GCS North American 1983



IR Interpreter: Brian Monroe
IR interpreted acres: 8,104
Date:08/19/2016
Time received the Image: 2327 hrs

Source: Esri, DigitalGlobe, GeoEye, Earthstar Geographics, CNES/Airbus DS, USDA, USGS, AEX, Getmapping, Aerogrid, IGN, IGP, swisstopo, and the GIS User Community

117°17'W 117°16'W 117°15'W 117°14'W 117°13'W 117°12'W