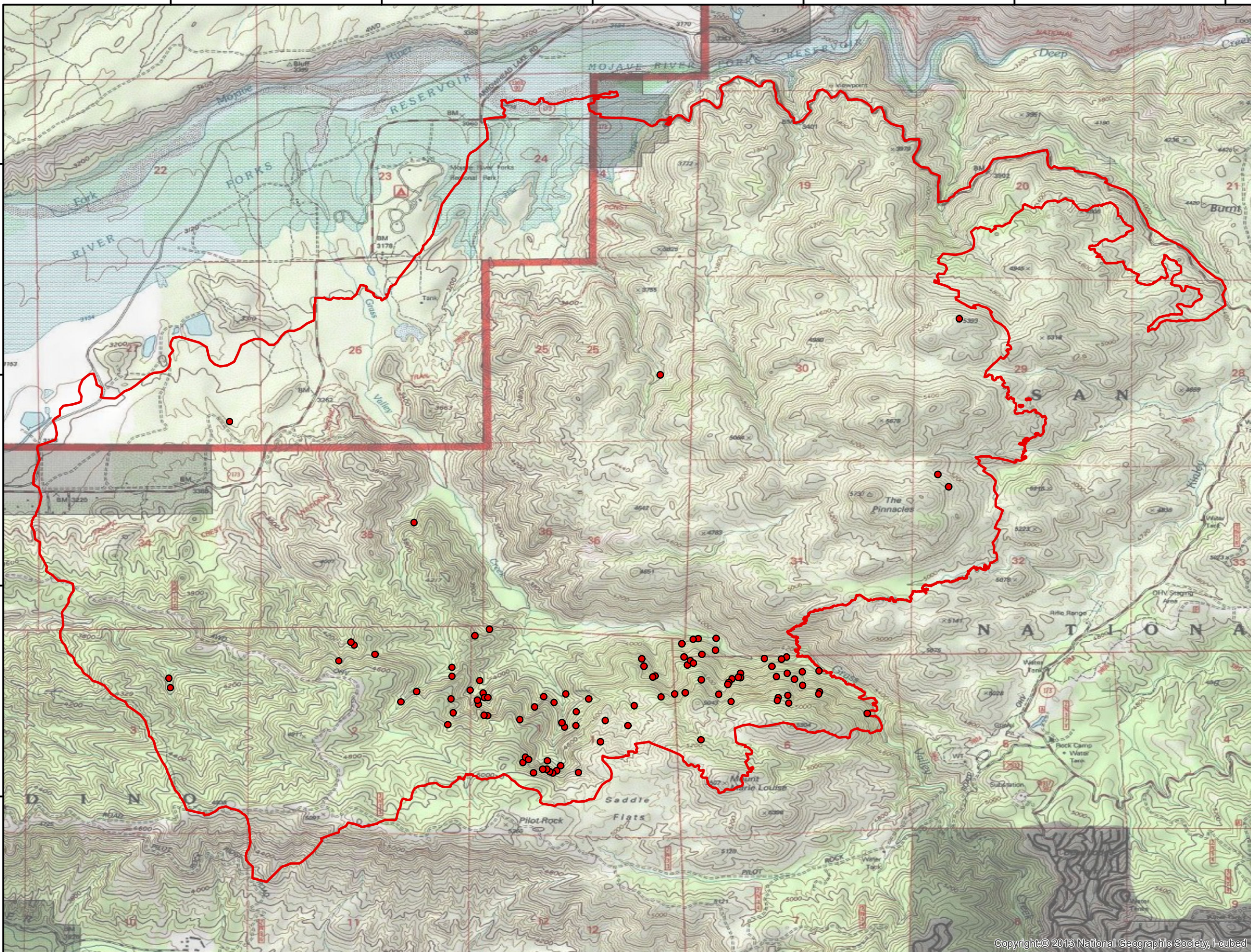






117°17'W 117°16'W 117°15'W 117°14'W 117°13'W 117°12'W

34°20'N  
34°19'N  
34°18'N  
34°17'N

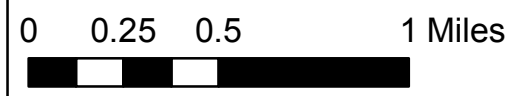


# Pilot Fire CA-BDF-010205 Infrared Heat Sources

1:32,000

-  Heat Perimeter
-  Intense Heat Areas
-  Scattered Heat Areas
-  Isolated Heat Sources

GCS North American 1983



IR Interpreter: Brian Monroe  
IR interpreted acres: 8,104  
Date:08/20/2016  
Time received the Image: 2228 hrs