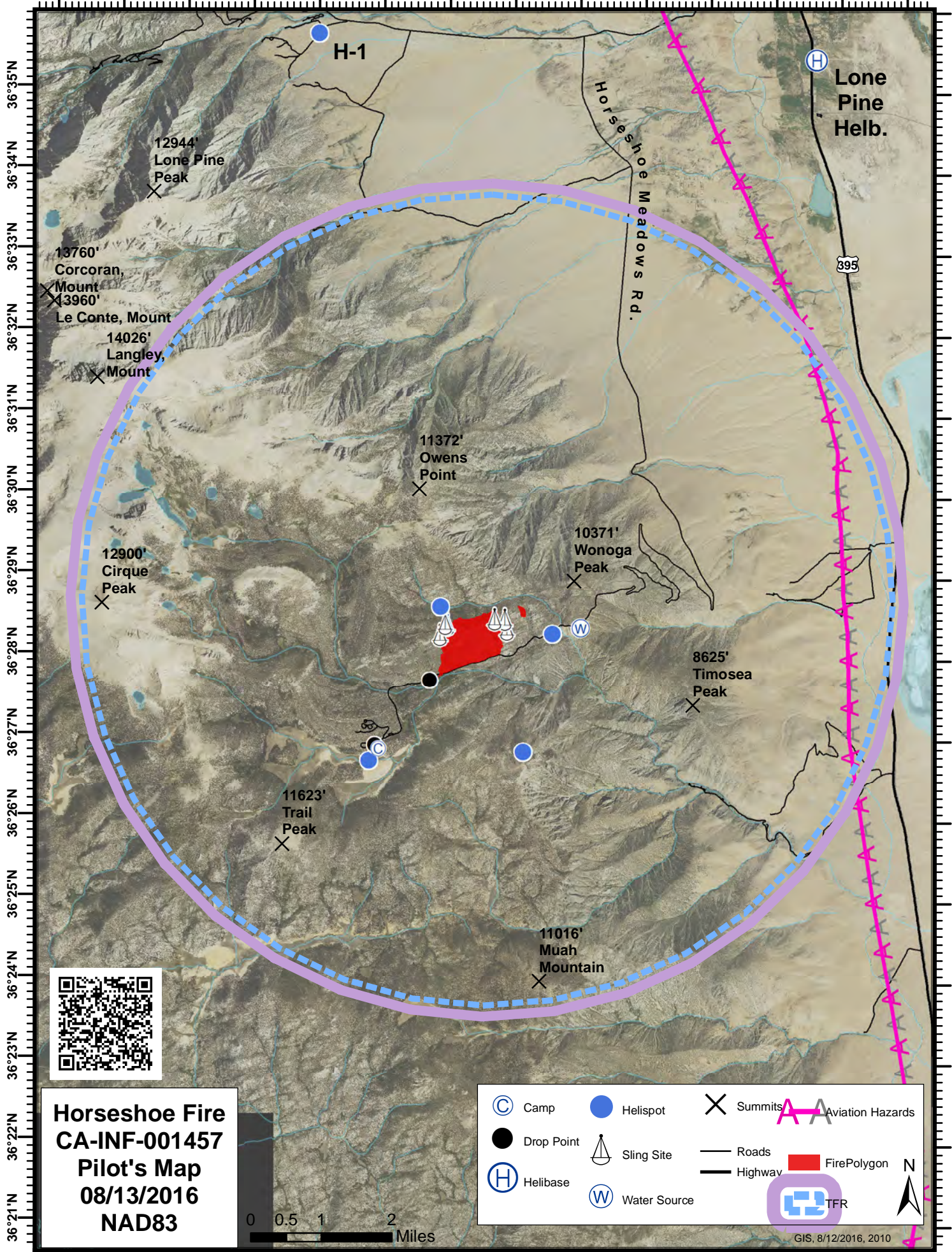


118°15'W 118°14'W 118°13'W 118°12'W 118°11'W 118°10'W 118°9'W 118°8'W 118°7'W 118°6'W 118°5'W 118°4'W 118°3'W 118°2'W



36°35'N
36°34'N
36°33'N
36°32'N
36°31'N
36°30'N
36°29'N
36°28'N
36°27'N
36°26'N
36°25'N
36°24'N
36°23'N
36°22'N
36°21'N

Lone Pine Helb.

H-1

12944'
Lone Pine Peak

13760'
Corcoran, Mount
13960'
Le Conte, Mount

14026'
Langley, Mount

11372'
Owens Point

12900'
Cirque Peak

10371'
Wonoga Peak

8625'
Timosea Peak

11623'
Trail Peak

11016'
Muah Mountain

Horseshoe Meadows Rd.

395



Horseshoe Fire
CA-INF-001457
Pilot's Map
08/13/2016
NAD83

0 0.5 1 2 Miles

	Camp		Helispot		Summits		Aviation Hazards
	Drop Point		Sling Site		Roads		Fire Polygon
	Helibase		Water Source		Highway		N



GIS, 8/12/2016, 2010

118°10'W

118°9'W

118°8'W

118°7'W

36°30'N

36°29'N

36°28'N

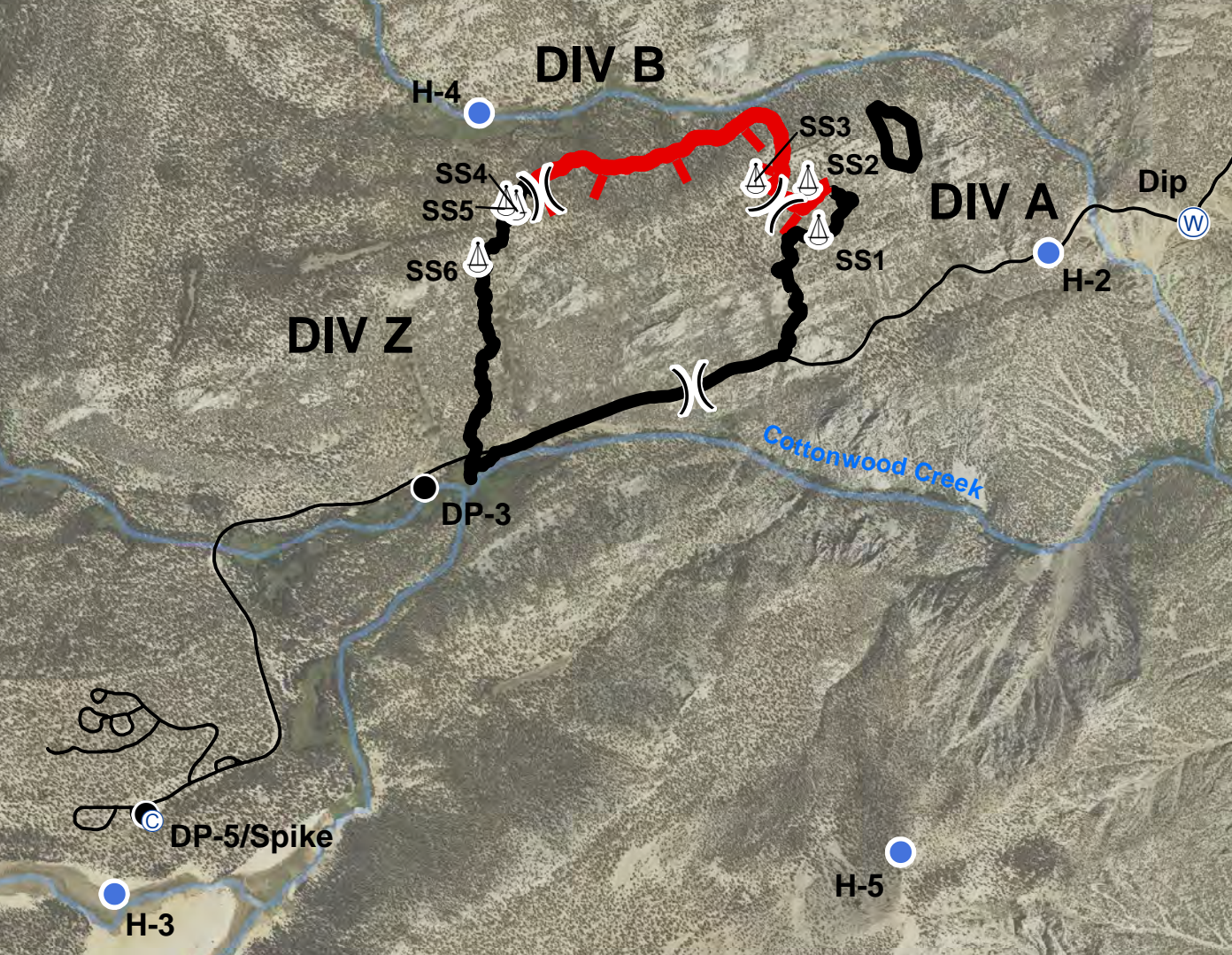
36°27'N

36°26'N

Name of Location	Latitude	Longitude
H-1	36° 35.665	-118° 11.013
H-2	36° 28.287	-118° 07.337
H-3	36° 26.705	-118° 10.188
H-4	36° 28.61	-118° 09.05
H-5	36° 26.83	-118° 07.76
DP-5/Spike	36° 26.899	-118° 10.026
Dip	36° 28.365	-118° 06.902
Sling Site 1	36° 28.337	-118° 08.027
Sling Site 2	36° 28.457	-118° 08.062
Sling Site 3	36° 28.461	-118° 08.218
Sling Site 4	36° 28.388	-118° 08.937
Sling Site 5	36° 28.398	-118° 08.968
Sling Site 6	36° 28.260	-118° 09.050
Lone Pine Helb.	36° 35.405	-118° 03.385
Manzanar Helb.	36° 44.078	-118° 08.628

PERSONNEL	FREQUENCY	AM	FM
AOBD	Command Rptr NIFC C5 (linked)		167.1000 RX 169.7500 TX T 5 146.2
ASGS	Command Rptr NIFC C12 (linked)		173.0375 RX 167.3250 TX T 5 146.2
ATGS	RW A/A Tactics	134.2750	170.0000
ASM	Air Tactics		169.2875
HLCO: as requested	Air to Ground		
HEB1: Lone Pine	Deck		163.100
HEB2 t: Lone Pine			
Flight Following & TOLC	Primary Victor Alt Command	134.2750 Command	Command
Ground to Air Emergency Only	Air Guard		168.6250 Tone 1 on TX
INF Dispatch			

10371'
Wonoga Peak
X



**Horseshoe Fire
CA-INF-001457
Pilot's Map
08/13/2016
NAD83**

	Division		Dip
	Camp		Uncontrolled Fire Edge
	Drop Point		Completed Line
	Helispot		Roads
	Sling Site		Summits